

BARRETO

OWNER'S and PARTS MANUAL E4X6TBT TILT BED TRAILER

CONGRATULATIONS!

You are now the proud owner of a BARRETO trailer. The following pages have important safety information as well as a detailed view of your trailer, along with corresponding part numbers. If you have any questions or need any replacement parts in the future, please contact us at your convenience. Our toll-free phone number, fax and email are listed below and parts may be ordered through any of these methods.

THANK YOU for your patronage and confidence in BARRETO equipment.

Using the Barreto Model E4X6TBT trailer for any purpose other than transporting Barreto equipment could pose a safety hazard and would null and void any manufacturer's warranty and/or liability.

Barreto Manufacturing, Inc. accepts no liability for damage to the trailer or transported goods other than Barreto specifically designed equipment. Barreto Manufacturing, Inc. also accepts no liability for injury or damage of any kind related to unauthorized use of the Barreto Tilt Bed Trailer.

TRAILER SERIAL NUMBER: _____



www.discount-equipment.com

PARTS FINDER

**Search Website
by Part Number**



**Search Manual
Library For Parts
Manual & Lookup Part
Numbers – Purchase
or Request Quote**

Search Manuals

Enter your information to search for a manual or to purchase a manual or parts.

* Brand:

* Model:

* Serial:

* Part Number:

SEARCH

**Can't Find Part or
Manual? Request Help
by Manufacturer,
Model & Description**

Parts Order Form

Please fill in the following information:

Manufacturer:

Model:

Description:

Quantity:

Part Number:

Part Name:

Part Description:

Part Category:

Part Location:

Part Status:

Part Condition:

Part Material:

Part Color:

Part Weight:

Part Dimensions:

Part Price:

Part Notes:

Submit

Discount-Equipment.com is your online resource for quality parts & equipment.

Florida: **561-964-4949** Outside Florida TOLL FREE: **877-690-3101**

Need parts?

Click on this link: <http://www.discount-equipment.com/category/5443-parts/> and choose one of the options to help get the right parts and equipment you are looking for. Please have the machine model and serial number available in order to help us get you the correct parts. If you don't find the part on the website or on one of the online manuals, please fill out the request form and one of our experienced staff members will get back to you with a quote for the right part that your machine needs.

We sell worldwide for the brands: Genie, Terex, JLG, MultiQuip, Mikasa, Essick, Whiteman, Mayco, Toro Stone, Diamond Products, Generac Magnum, Airman, Haulotte, Barreto, Power Blanket, Nifty Lift, Atlas Copco, Chicago Pneumatic, Allmand, Miller Curber, Skyjack, Lull, Skytrak, Tsurumi, Husquvarna Target, Stow, Wacker, Sakai, Mi-T-M, Sullair, Basic, Dynapac, MBW, Weber, Bartell, Bennar Newman, Haulotte, Ditch Runner, Menegotti, Morrison, Contec, Buddy, Crown, Edco, Wyco, Bomag, Laymor, EZ Trench, Bil-Jax, F.S. Curtis, Gehl Pavers, Heli, Honda, ICS/PowerGrit, IHI, Partner, Imer, Clipper, MMD, Koshin, Rice, CH&E, General Equipment, Amida, Coleman, NAC, Gradall, Square Shooter, Kent, Stanley, Tamco, Toku, Hatz, Kohler, Robin, Wisconsin, Northrock, Oztec, Toker TK, Rol-Air, APT, Wylie, Ingersoll Rand / Doosan, Innovatech, Con X, Ammann, Mecalac, Makinex, Smith Surface Prep, Small Line, Wanco, Yanmar

ATTACHMENTS FOR THE 4X6TBT

The Barreto Tilt Bed Trailer, Model Number E4X6TBT, has several receivers to attach any of the following options, to be used one at a time:

- 00287 WHEEL LOCK (to transport the Barreto Model 912 trencher)
- 00289 TILLER BUMPER PURCHASE (to transport a Barreto Model 916, 918, 1320 or 1620 tiller)
- 00340 TIE-DOWN KIT, STK (to transport the STK Barreto Track trencher)
- 00340-RTK TIE-DOWN KIT, (to transport the RTK stand on Barreto Track trencher)
- 00340-SG TIE-DOWN KIT, 30SG (to transport the 30SG Barreto Stump Grinder)
- 00462 ADJUSTABLE WHEEL LOCK (to transport a Barreto Model 1324D or 1624D trencher)
- 00482 712 WHEEL LOCK (to transport a Barreto Model 712 trencher)

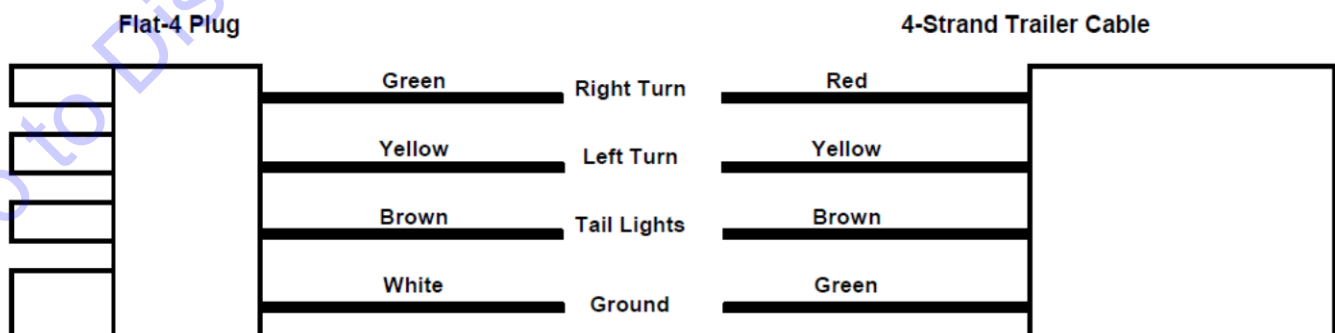
Each of the above is designed to aid in holding a single piece of Barreto equipment in place while in transit.

Although the trailer is versatile, Barreto Manufacturing, Inc. accepts no liability for injury or damage of any kind related to use of the Barreto Tilt Bed Trailer.

Be sure to read and observe the safety instructions for proper use of the Barreto Tilt Bed Trailer. If there are any questions regarding proper use, please contact Barreto Manufacturing, Inc. or an authorized Barreto Dealer. The VIN is located on the upper bed frame, on the left side and near the front.

WIRING THE TRAILER

Four pin connectors are typical for the three lighting functions (tail, turn, and brake) plus one pin for the ground wire. Vehicle manufacturers have not standardized wiring colors. We recommend that a circuit tester is used on the tow vehicle wiring to locate the correct wire for each function. The wire that supplies 12 volt DC when switched on with the headlights in the tow vehicle is for the tail lights.



BARRETO MANUFACTURING, INC. EQUIPMENT WARRANTY

Barreto Manufacturing, Inc. warrants all **BARRETO** equipment to be free of defects in material and workmanship for a period of one (1) year, dating from the delivery to the original user.

This warranty is in lieu of all other warranties, whether written or implied, and is limited to:

1. Replacement of parts returned to the dealer and/or factory and determined defective upon inspection. (Replacement for parts to dealers shall be at dealer cost plus shipping charges.)
2. Time for pick-up and/or delivery, transportation of service calls by dealers is excluded. Manufacturer reserves the right to determine reasonable time required for repair.

Warranty does not apply to damage caused by abuse or neglect. Time and materials required for normal maintenance and service are also excluded from warranty coverage.

Engines, engine accessories, batteries and tires are warranted by the original manufacturers and are not covered by the Barreto Equipment Warranty. Wear parts such as tiller tines, sprockets, bearings, trencher chain parts including teeth, stump grinder cutting teeth & holders, etc. are also excluded unless it can be determined that a defect has contributed to premature wear.

SAFETY INSTRUCTIONS / CHECKLIST

Be sure to obey all traffic laws and rules of the road while towing the Barreto Tilt Bed Trailer. Never exceed 45 miles per hour while towing the trailer. The towing vehicle should be in legal operating condition. If local law requires trailer lights, be sure they are in good repair and are in proper working condition.

Refer to the following checklist before towing:

- Towing vehicle should have a 2" ball. Be sure it is in good repair and securely fastened to the vehicle.
- Securely fasten the hitch to the ball by tightening the hitch nut.
- Cross the chains under the trailer tongue to prevent the tongue dropping to the ground if the trailer comes loose.
- Attach the safety chain to the towing vehicle in such a way that it cannot come off accidentally.
- Check the hitch-to-ball connection after driving a few blocks and re-tighten if necessary.
- Allow only enough slack in the chains to permit proper turning of the vehicles. Do not let chains drag on the ground or be drawn up too tight. Slack strength should hold the tongue and coupler off the ground with the trailer loose.
- When using the 00287 WHEEL LOCK to transport the Barreto Model 912 trencher, insure that the spring-loaded pin is holding the trencher front wheel securely.
- When using the 00462 ADJUSTABLE WHEEL LOCK to transport a Barreto Model 1324D or 1624D trencher, insure that the wheel lock pin is in place behind the trencher front wheel. The wheel lock pin handle should be behind the lip on the side plate (near where the chain is fastened) and under the lock pin keeper.

SAFETY INSTRUCTIONS / CHECKLIST (continued)

- When using the 00289 TILLER BUMPER PURCHASE to transport a Barreto Model 916/918 or 1320/1620 tiller, both bumper lock pins must be placed behind the tiller bumper with a hair spring cotter through each pin. The two bolts that fasten the bumper lock pin chains prevent the Barreto tillers from shifting from side to side, and should be in good condition.
- Instructions for using the 00340 TIE-DOWN KIT, (for the Barreto STK trencher) are on drawing 00340, for the Barreto RTK trencher on drawing 00340-RTK, and for the 30SG Barreto Stump Grinder on drawing 00340-SG.
- Strap or chain Barreto equipment to the trailer D-rings for highway, long distance, or rough road towing. Do this in addition to using a trencher wheel lock or tiller bumper purchase.

Always exercise extreme caution and allow extra clearance while towing a trailer.

DRIVE SAFELY!

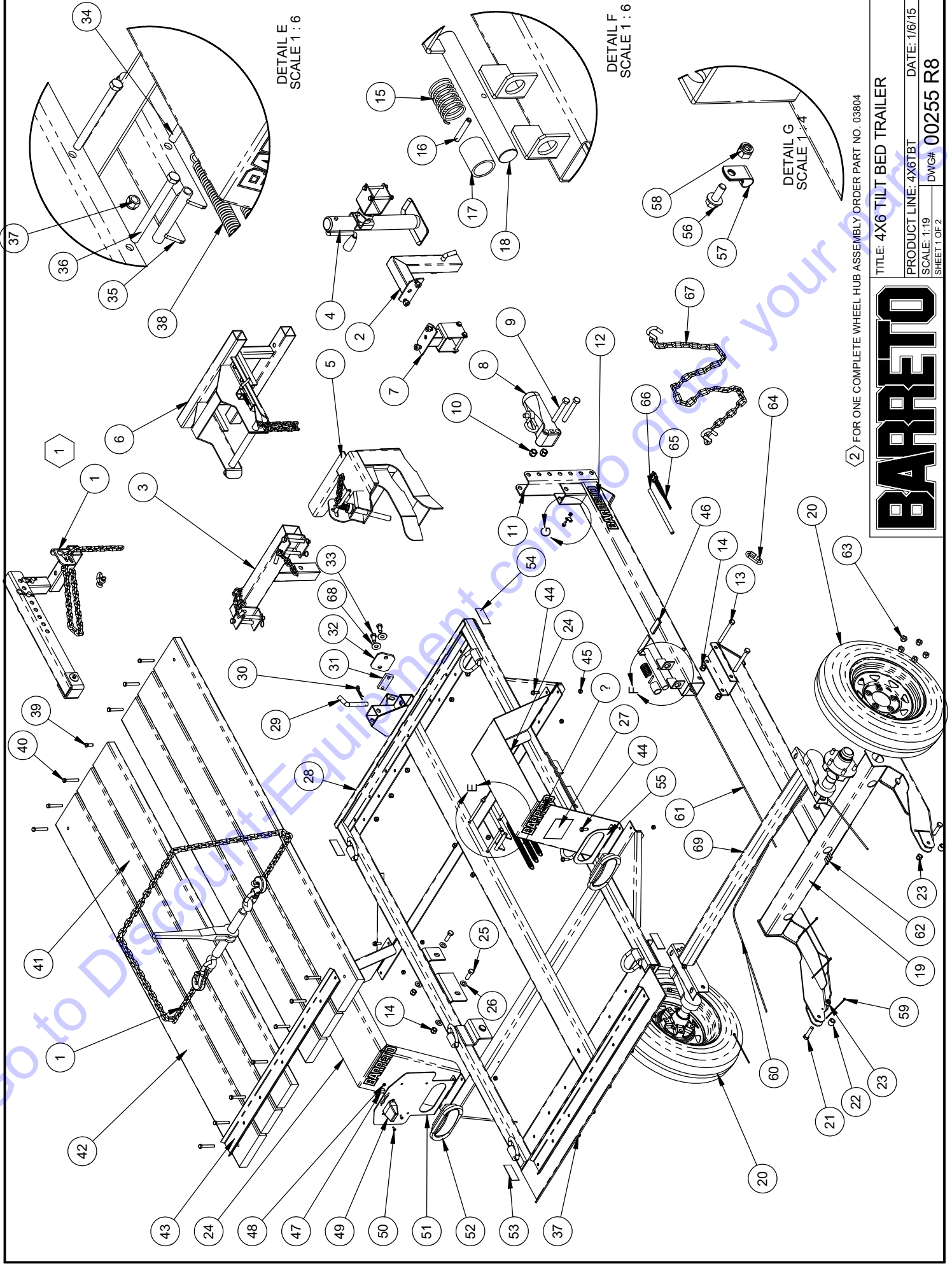
California Proposition

 **65 Warning** 

WARNING: This product contains chemicals known to the State of California to cause cancer, and birth defects or other reproductive harm.

ADVERTENCIA: Este producto contiene productos químicos reconocidos por el estado de California que provocan cancer, defectos de nacimiento u otros daños reproductivos.

For more information: www.P65Warnings.ca.gov



② FOR ONE COMPLETE WHEEL HUB ASSEMBLY ORDER PART NO. 03804

TITLE: 4X6 TILT BED TRAILER

PRODUCT LINE: 4X6TBT DATE: 1/6/15

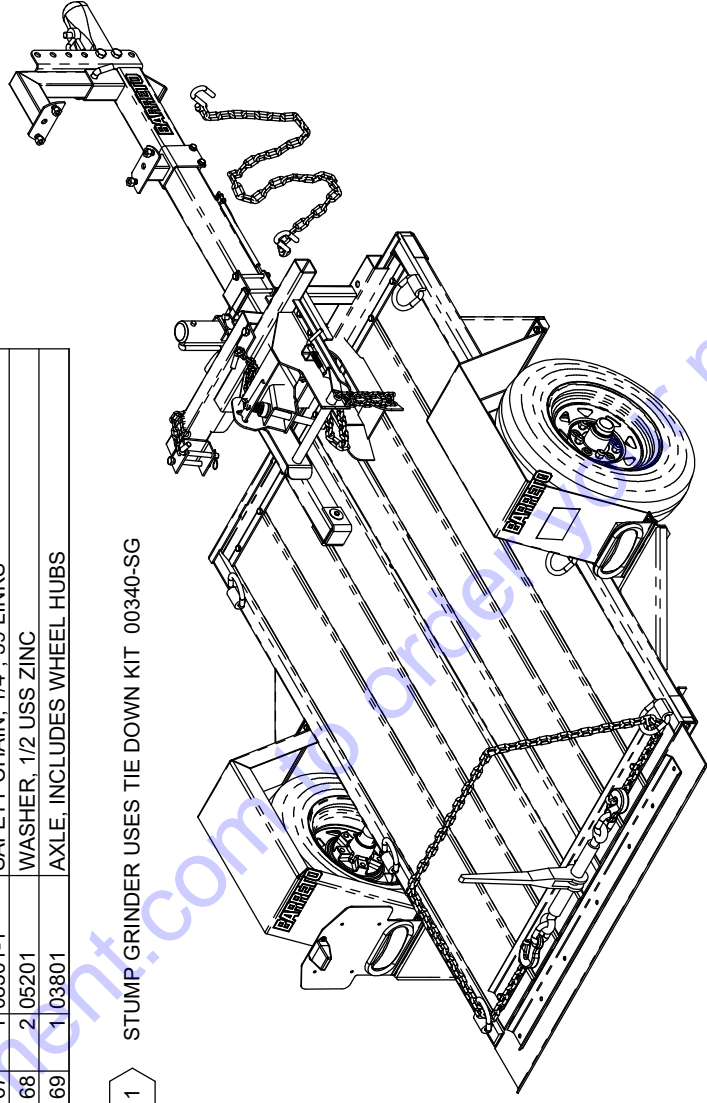
SCALE: 1:19 DWG#: 00255 R8 SHEET 1 OF 2

BARRETT

Go to Discount Equipment to order your parts

P QTY.	PART NO.	DESCRIPTION	1	P QTY.	PART NO.	DESCRIPTION
1	100340	OPTIONAL TIE-DOWN KIT, 1824TK	1	48	205345	NUT, NYLOCK, 10-24 NC ZINC
2	100300	OPTIONAL SPARE TIRE MOUNT		49	10628	LICENSE PLATE LIGHT
3	100289	OPTIONAL BUMPER PURCHASE, TILLERS		50	05233	SCREW #10-24 X 1/2 PPH
4	100339	SWIVEL JACK KIT, 9/16 PIN		51	10609	MOUNTING BRACKET, TAIL LIGHT & LICENSE
5	100287	OPTIONAL WHEEL LOCK, 912		52	20612	TAIL LAMP, PETERSON M421KR
6	100462	OPTIONAL ADJUSTABLE WHEEL LOCK, 1318/1324/1		53	20631	RED REFLECTOR, 1-3/8 X 3-1/8
7	100379	OPTIONAL SPARE TIRE MOUNT		54	20630	AMBER REFLECTOR, 1-3/8 X 3-1/8
8	103820	COUPLER, CROFT ADJUSTABLE		55	10613	MOUNTING BRACKET, TAIL LIGHT
9	205095	HH CAP SCREW, 5/8-11 NC X 4-1/2 G5 ZINC		56	105069	WHIZ LOCK, 1/4-20 NC X 5/8 ZINC
10	205099	NUT, NYLOCK, 5/8-11 NC ZINC		57	11238	CABLE CLAMP, RICHCO SPN-5
11	111337	TONGUE & LATCH MOUNT		58	105096	NUT, NYLOCK, 1/4-20 NC ZINC
12	403040-11	DECAL, "BARRETO", 2-3/16 X 7-3/8		59	1003035	TIE WRAP, 1/8 X 6
13	205094	HH CAP SCREW, 1/2-13 NC X 4-1/2 G5 ZINC		60	211358	WIRE CABLE, 4X 16 GA STRANDED, 4-1/2' LONG
14	605098	NUT, NYLOCK, 1/2-13 NC ZINC		61	111357	WIRE CABLE, 4X 16 GA STRANDED, 8' LONG
15	10592	SPRING		62	1405343	BUTT SPLICE
16	105334	ROLL PIN (SLOTTED SPRING), 1/4 X 1-1/2 ZINC		63	1005042	QUICK LINK, 5/16
17	10580	SPACER, LATCH PIN		64	103711	NUT, LUG, 1/2-20 NF
18	10579	LATCH PIN		65	103264	PLUG, FLAT 4 MALE
19	10572 R1	LOWER BED FRAME		66	111606	HEAT SHRINK TUBE, 1/2 X 9
20	203814	TIRE & RIM, 5.30-12, 5 HOLE ON 4.5 BC		67	108301-1	SAFETY CHAIN, 1/4", 39 LINKS
21	205251	HH CAP SCREW, 1/2-20 NF X 2 G5 ZINC		68	205201	WASHER, 1/2 USS ZINC
22	20585	BUSHING		69	103801	AXLE, INCLUDES WHEEL HUBS
23	205075	NUT, NYLOCK, 1/2-20 NF ZINC				
24	211013	FENDER				
25	405300-01	HH CAP SCREW, 1/2-13 NC X 1-1/2 G5 ZINC				
26	805102	WASHER, 1/2 SAE ZINC HARDENED				
27	103040-14	DECAL, "45 MPH"				
28	111012	UPPER BED FRAME				
29	10593	BENT ARM PIN, 5/8 X 3 WITH HOLE, ZINC				
30	105142	HAIR SPRING COTTER #8				
31	10625	STRIKER MOUNTING PLATE				
32	10624	STRIKER PLATE				
33	205067	HH CAP SCREW, 1/2-13 NC X 1 G5 ZINC				
34	10598	HH CAP SCREW, 3/8-16 NC X 3-1/4 G5 ZINC				
35	111014	LIFT ROLLER				
36	20599	HH CAP SCREW, 3/8-16 NC X 4-1/2 G5 ZINC				
37	1705073	NUT, NYLOCK, 3/8-16 NC ZINC				
38	303220	SPRING				
39	105059	HH CAP SCREW, 3/8-16 NC X 1 G5 ZINC				
40	1305249	HH CAP SCREW, 3/8-16 NC X 2-1/2 G5 ZINC				
41	40595	WOOD DECKING, 2 X 6 X 71-5/8				
42	20597	WOOD DECKING, 2 X 8 X 71-5/8				
43	10573-15	TRACTION PLATE				
44	805144	WHIZ-LOCK, 5/16-18 NC X 1 ZINC				
45	805273	NUT, NYLOCK, 5/16-18 NC ZINC				
46	103018	GRIP, 1/8 X 3/4 X 2-3/4				
47	303806	QUICK-SPLICE				

1 STUMP GRINDER USES TIE DOWN KIT 00340-SG



BARRETO

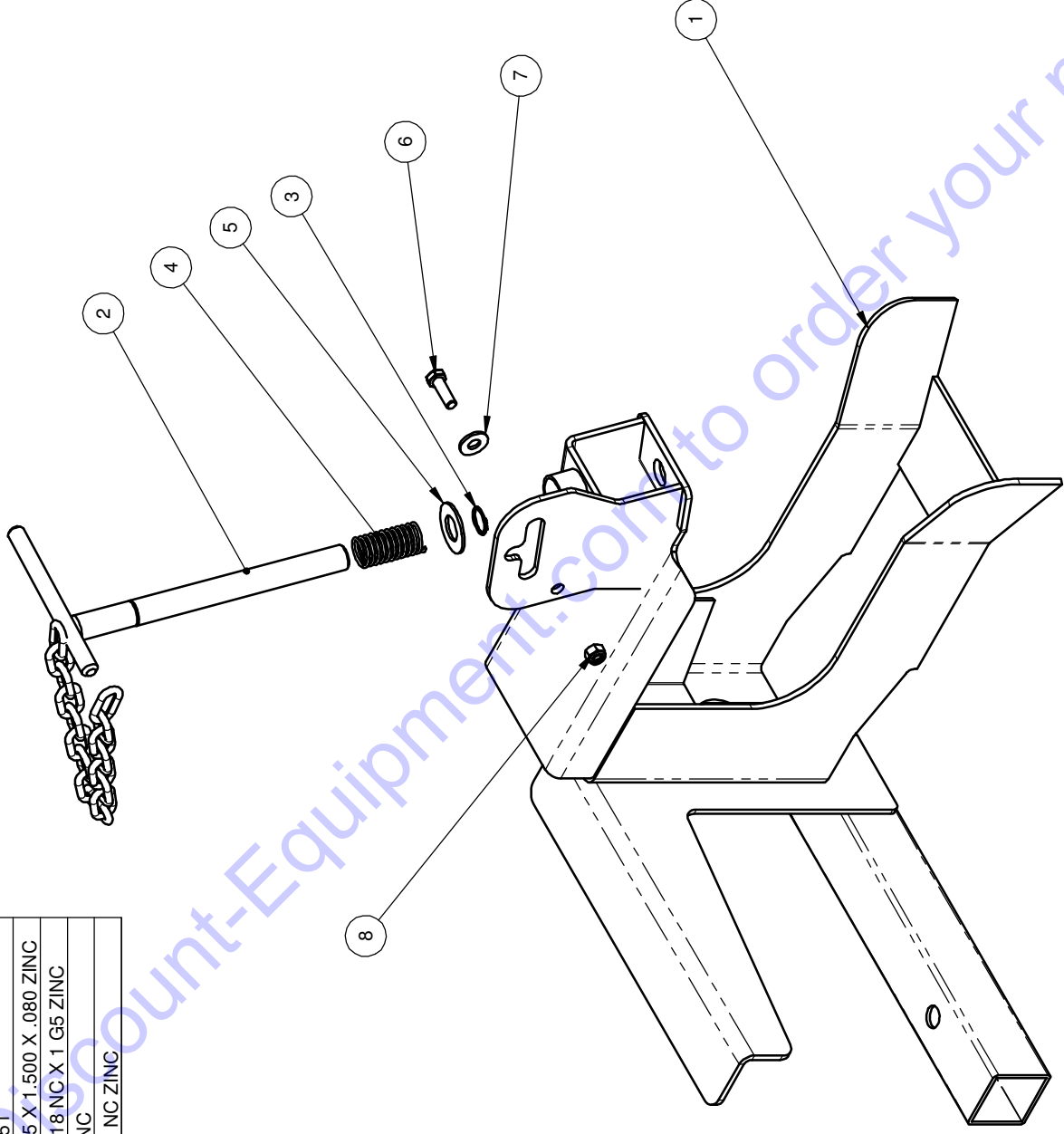
TITLE: 4X6 TILT BED TRAILER

PRODUCT LINE: 4X6TBT DATE: 1/6/15

SCALE: 1:20 DWG# 00255 R8

SHEET 2 OF 2

REF. QTY.	PART NO.	DESCRIPTION
1	10474	WHEEL LOCK, 912
2	10583	LOCK PIN
3	05216	SNAP RING, 3/4 EXTERNAL
4	10584	SPRING, CENTURY 3351
5	10633	THRUST WASHER, .765 X 1.500 X .080 ZINC
6	05315	HH CAP SCREW, 5/16-18 NC X 1 G5 ZINC
7	10615	WASHER, 5/16 USS ZINC
8	05273	NUT, NYLOCK, 5/16-18 NC ZINC



TITLE: WHEEL LOCK
912 TRENCHER

PRODUCT LINE: 4 X 8 TBT

SCALE: 1:5

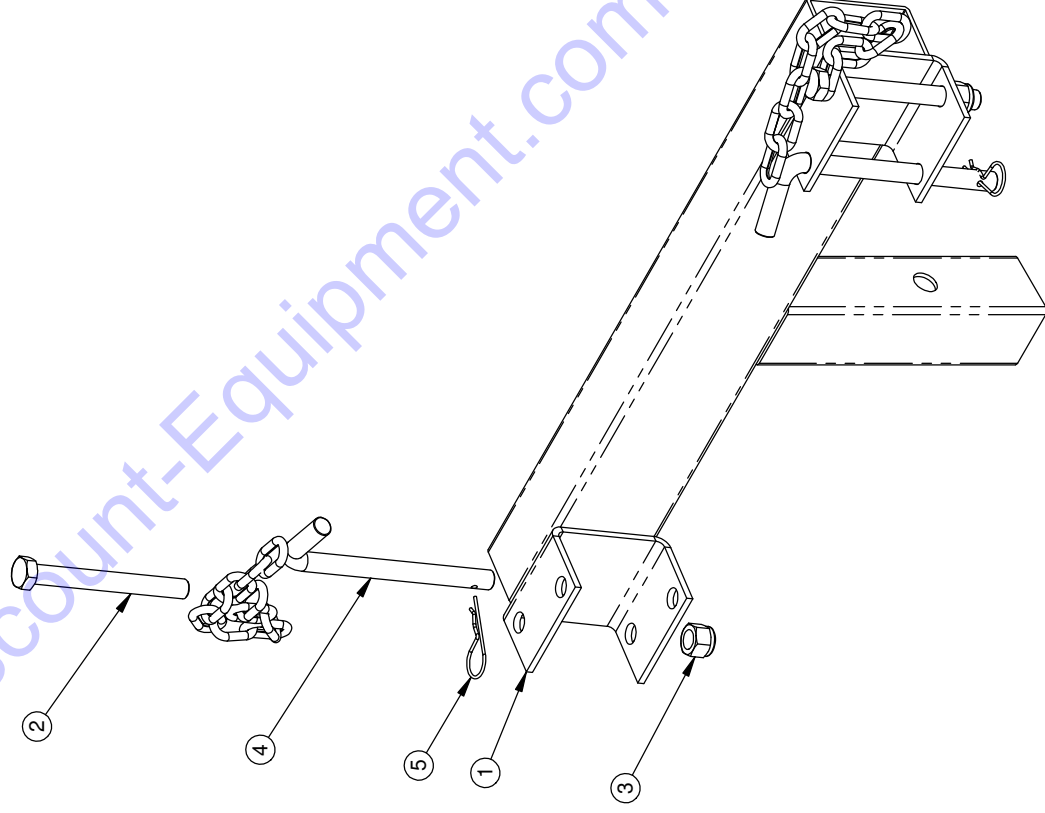
SHEET 1 OF 1

DATE:

DWG# 00287

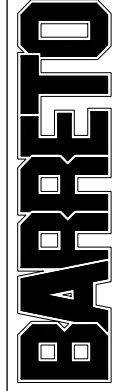
BARRETO

REF. QTY.	PART NO.	DESCRIPTION
1	10604	TILLER BUMPER PURCHASE
2	05094	HH CAP SCREW, 1/2-13 NC X 4-1/2 G5 ZINC
3	05098	NUT, NYLOCK, 1/2-13 NC
4	08015	BUMPER LOCK PIN
5	05032	HAIR SPRING COTTER #6



NOTES:

1. USAGE: TO SECURE A MODEL 916, 918, 1320, OR 1620 TILLER TO THE 4X6 TILT BED TRAILER.



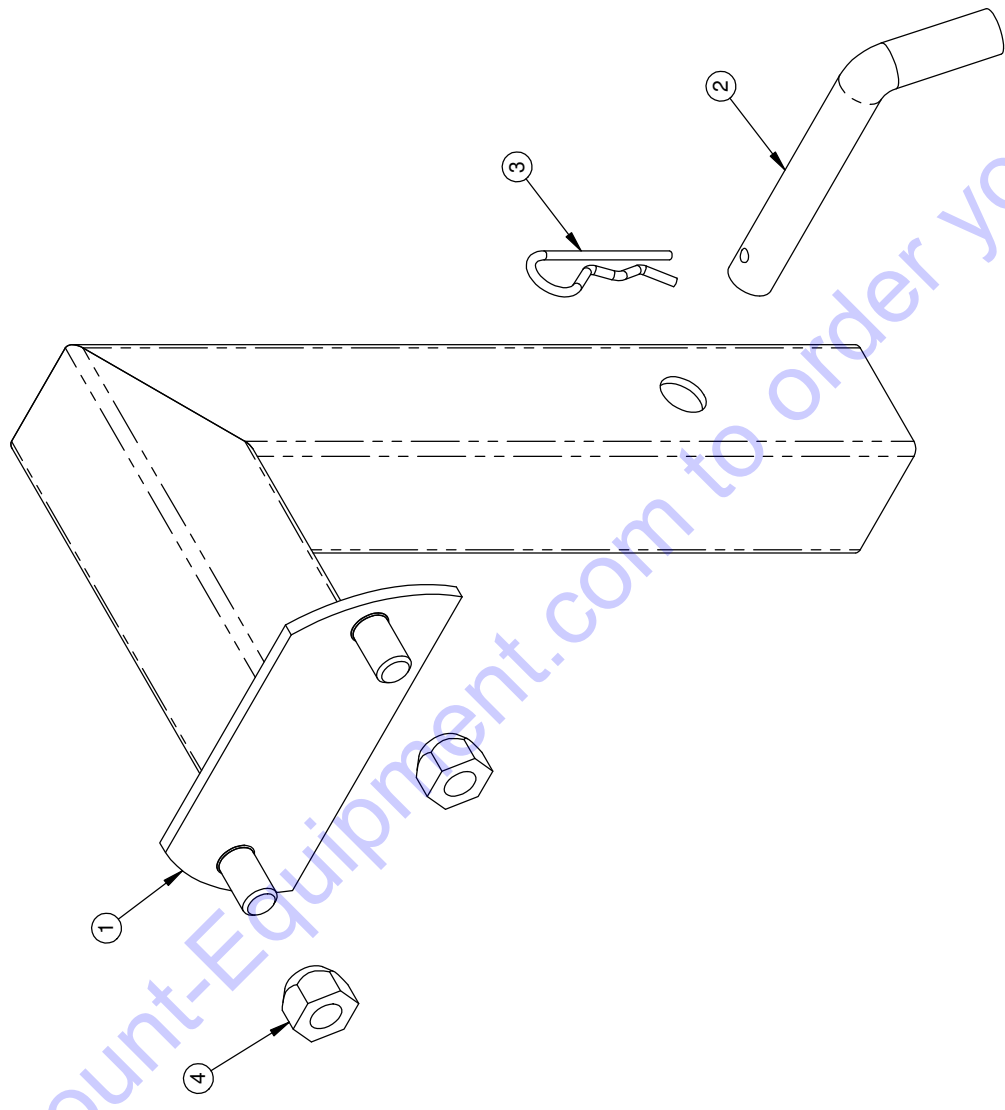
TITLE: TILLER BUMPER PURCHASE

PRODUCT LINE: 4X6TBT DATE: 6/16/05

SCALE: 1:4.8 DWG# 00289

SHEET 1 OF 1

REF.	QTY.	PART NO.	DESCRIPTION
1	1	10690	SPARE TIRE MOUNT
2	1	10593	BENT ARM PIN, 5/8 X 3 WITH HOLE, ZINC
3	1	05142	HAIR SPRING COTTER #8
4	2	05042	NUT, LUG, 1/2-20 NF X 13/16 HEX



TITLE: SPARE TIRE MOUNT

PRODUCT LINE: 4x6TBT DATE: 5/31/05

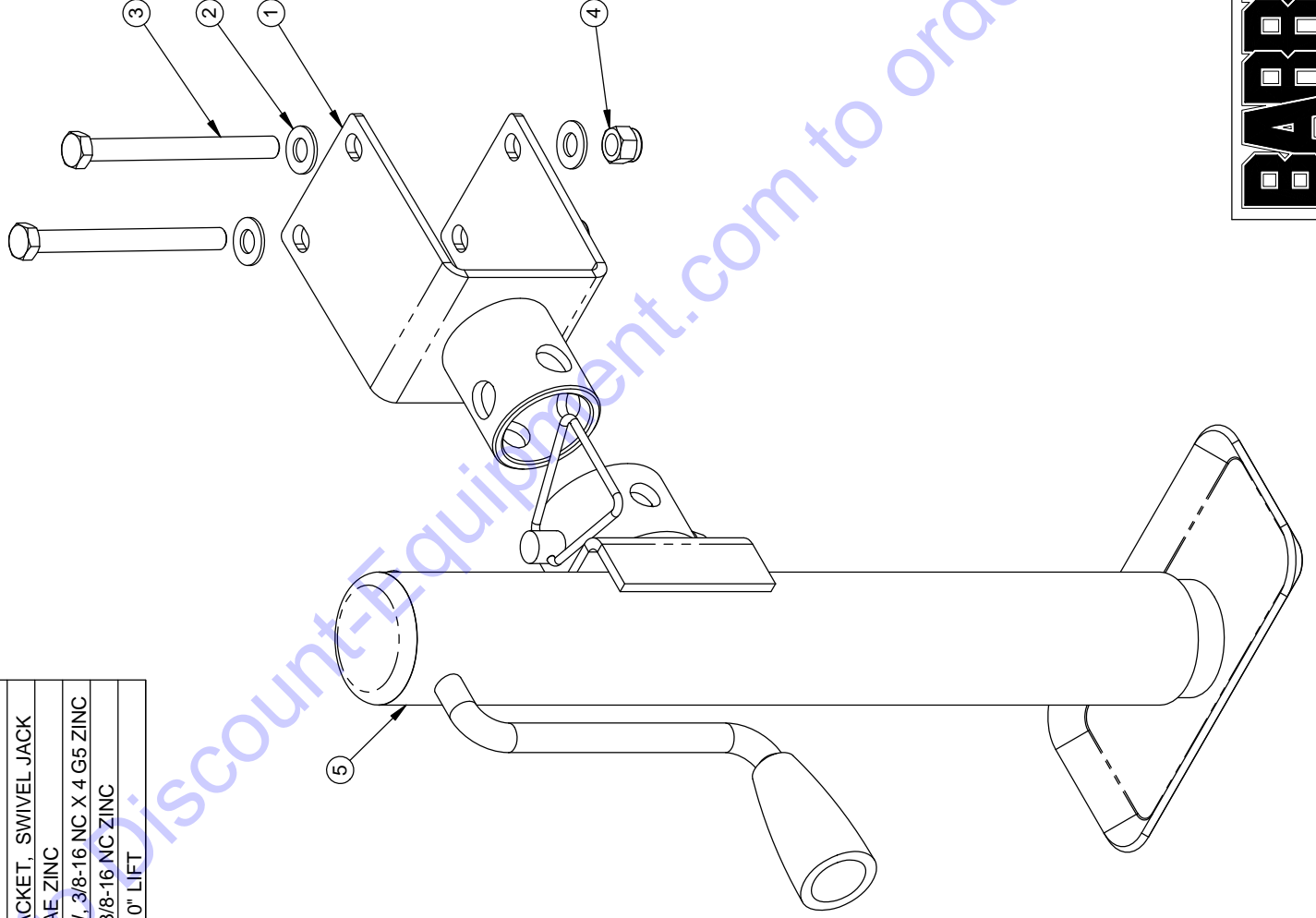
SCALE: 1:2.5 DWG# 00300

SHEET 1 OF 1

BARRETO

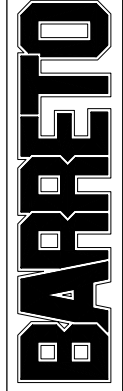
Discount-Equipment.com to order your parts

REF QTY.	PART NO.	DESCRIPTION
1	10903-58	MOUNTING BRACKET, SWIVEL JACK
2	05101	WASHER, 3/8 SAE ZINC
3	10757	HH CAP SCREW, 3/8-16 NC X 4 G5 ZINC
4	05073	NUT, NYLOCK, 3/8-16 NC ZINC
5	08216	SWIVEL JACK, 10" LIFT



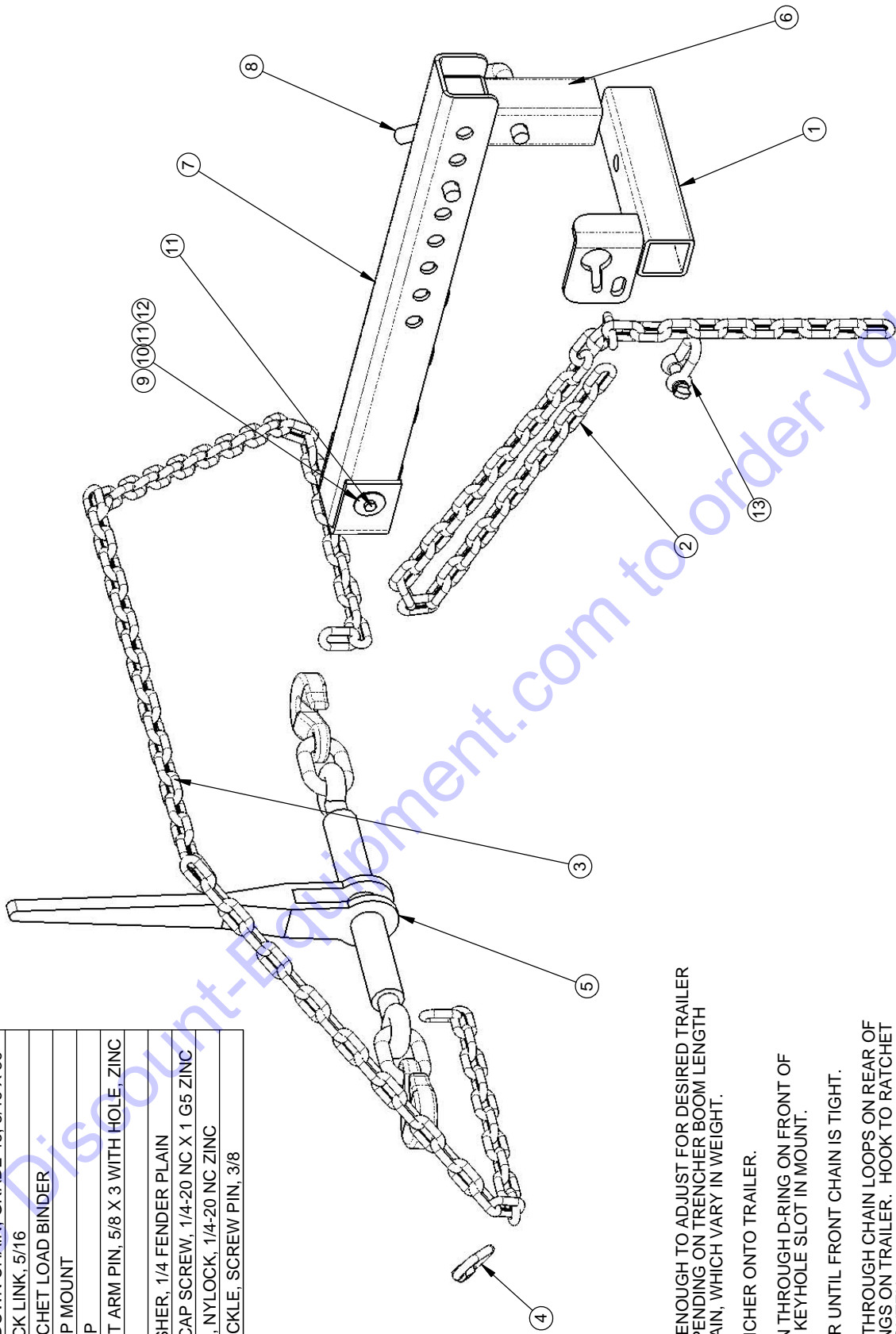
NOTES:

- USAGES:
 A. STANDARD ON 4X6TBT (TILT BED TRAILER)
 B. OPTIONAL ON 920LS & 922LS (LOG SPLITTERS)
 C. CAN BE USED ON ANY 3X3 TRAILER TONGUE



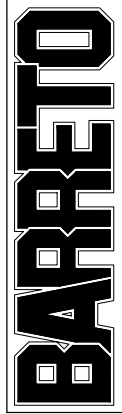
TITLE: SWIVEL JACK & MOUNTNG
 BRACKET, 5/8 PIN
 PRODUCT LINE: 4X6TBT DATE: 8/25/09
 SCALE: 1:3 DWG#: 00339
 SHEET 1 OF 1

REF	QTY.	PART NO.	DESCRIPTION
1	1	11574	CHAIN MOUNT
2	1	03828	TIE-DOWN CHAIN, GRADE 43, 5/16 X 42"
3	1	03829	TIE-DOWN CHAIN, GRADE 43, 5/16 X 86"
4	1	03711	QUICK LINK, 5/16
5	1	03822	RATCHET LOAD BINDER
6	1	11575	STOP MOUNT
7	1	11576	STOP
8	2	10593	BENT ARM PIN, 5/8 X 3 WITH HOLE, ZINC
9	1	11595	PAD
10	2	05542	WASHER, 1/4 FENDER PLAIN
11	2	05237	HH CAP SCREW, 1/4-20 NC X 1 G5 ZINC
12	2	05096	NUT, NYLOCK, 1/4-20 NC ZINC
13	1	03827	SHACKLE, SCREW PIN, 3/8



NOTES:

1. CHAINS ARE LONG ENOUGH TO ADJUST FOR DESIRED TRAILER TONGUE WEIGHT DEPENDING ON TRENCHER BOOM LENGTH AND TYPE OF DIG CHAIN, WHICH VARY IN WEIGHT.
2. DRIVE TRACK TRENCHER ONTO TRAILER.
3. LOOP FRONT CHAIN THROUGH D-RING ON FRONT OF TRENCHER AND INTO KEYHOLE SLOT IN MOUNT.
4. BACK UP TRENCHER UNTIL FRONT CHAIN IS TIGHT.
5. LOOP REAR CHAIN THROUGH CHAIN LOOPS ON REAR OF TRENCHER AND D-RINGS ON TRAILER. HOOK TO RATCHET LOAD BINDER AND TIGHTEN.
6. THE QUICK LINK IS PROVIDED TO PREVENT LOSING THE CHAIN WHEN NOT IN USE. ATTACH IT BETWEEN CHAIN LINKS NEXT TO ONE OF THE TRAILER D-RINGS. NEVER APPLY THE TIE-DOWN LOAD TO IT.



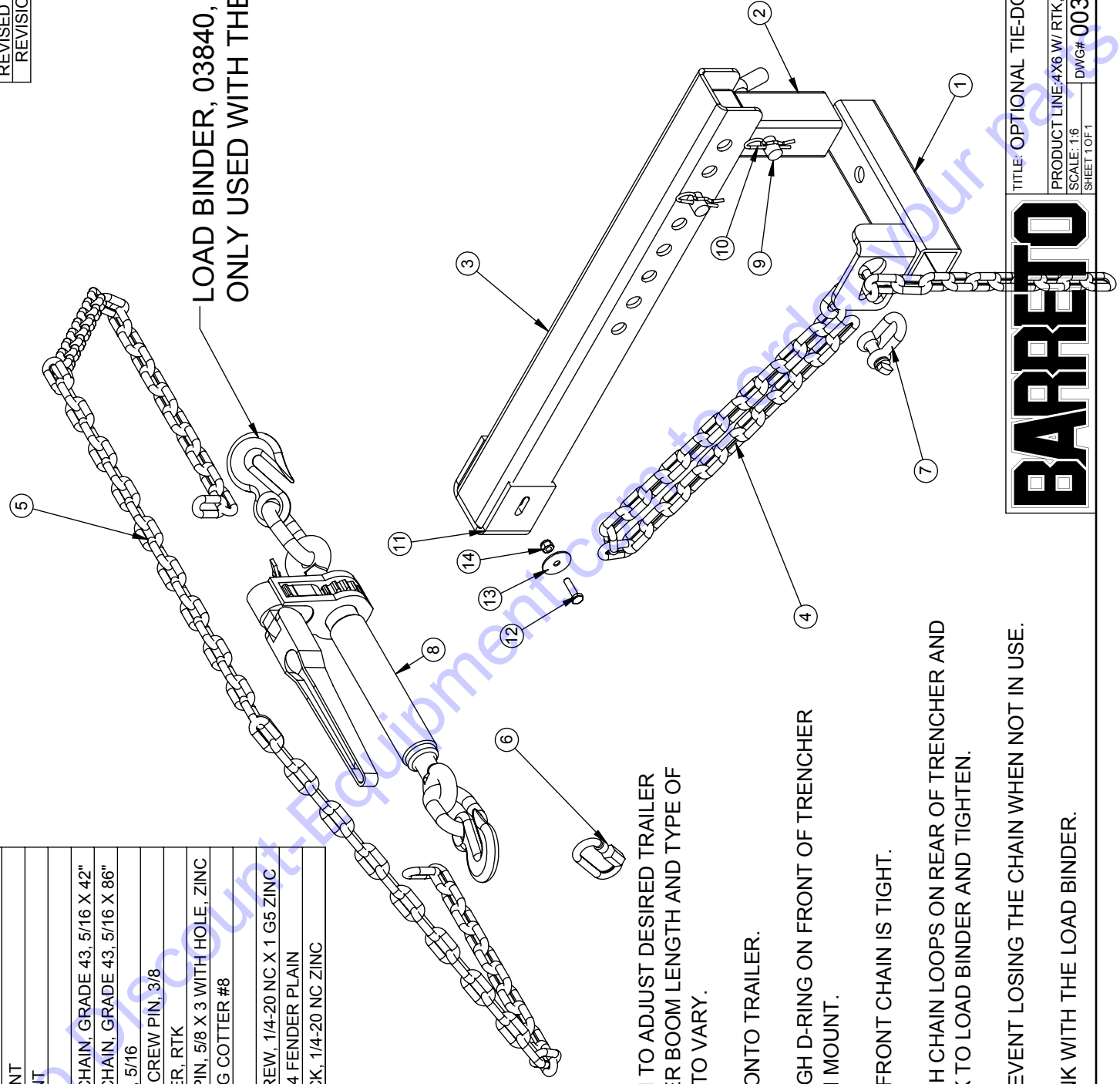
TITLE: TIE-DOWN KIT, 1824TK

PRODUCT LINE: 4X6TBT DATE: 9/1/10
 SCALE: 1:6
 SHEET 1 OF 1 DWG# 00340

ITEM NO.	QTY.	PART NO.	DESCRIPTION
1	1	11574	CHAIN MOUNT
2	1	11575	STOP MOUNT
3	1	11576	STOP
4	1	03828	TIE-DOWN CHAIN, GRADE 43, 5/16 X 42"
5	1	03829	TIE-DOWN CHAIN, GRADE 43, 5/16 X 86"
6	1	03711	QUICK LINK, 5/16
7	1	03827	SHACKLE, SCREW PIN, 3/8
8	1	03840	LOAD BINDER, RTK
9	2	10593	BENT ARM PIN, 5/8 X 3 WITH HOLE, ZINC
10	2	05142	HAIR SPRING COTTER #8
11	1	11595	PAD
12	2	05237	HH CAP SCREW, 1/4-20 NC X 1 G5 ZINC
13	2	05542	WASHER, 1/4 FENDER PLAIN
14	2	05096	NUT, NYLOCK, 1/4-20 NC ZINC

RELEASE DATE	6/23/16
REVISED DATE	NEW
REVISION #	0

LOAD BINDER, 03840,
ONLY USED WITH THE RTK



NOTES:

CHAINS ARE LONG ENOUGH TO ADJUST DESIRED TRAILER TONGUE WEIGHT. TRENCHER BOOM LENGTH AND TYPE OF DIG CHAIN, CAUSE WEIGHT TO VARY.

DRIVE RIDE ON TRENCHER ONTO TRAILER.

LOOP FRONT CHAIN THROUGH D-RING ON FRONT OF TRENCHER AND INTO KEYHOLE SLOT IN MOUNT.

BACK UP TRENCHER UNTIL FRONT CHAIN IS TIGHT.

LOOP REAR CHAIN THROUGH CHAIN LOOPS ON REAR OF TRENCHER AND D-RINGS ON TRAILER. HOOK TO LOAD BINDER AND TIGHTEN.

USE THE QUICK LINK TO PREVENT LOSING THE CHAIN WHEN NOT IN USE.

NEVER LOAD THE QUICK LINK WITH THE LOAD BINDER.



TITLE: OPTIONAL TIE-DOWN KIT, RTK

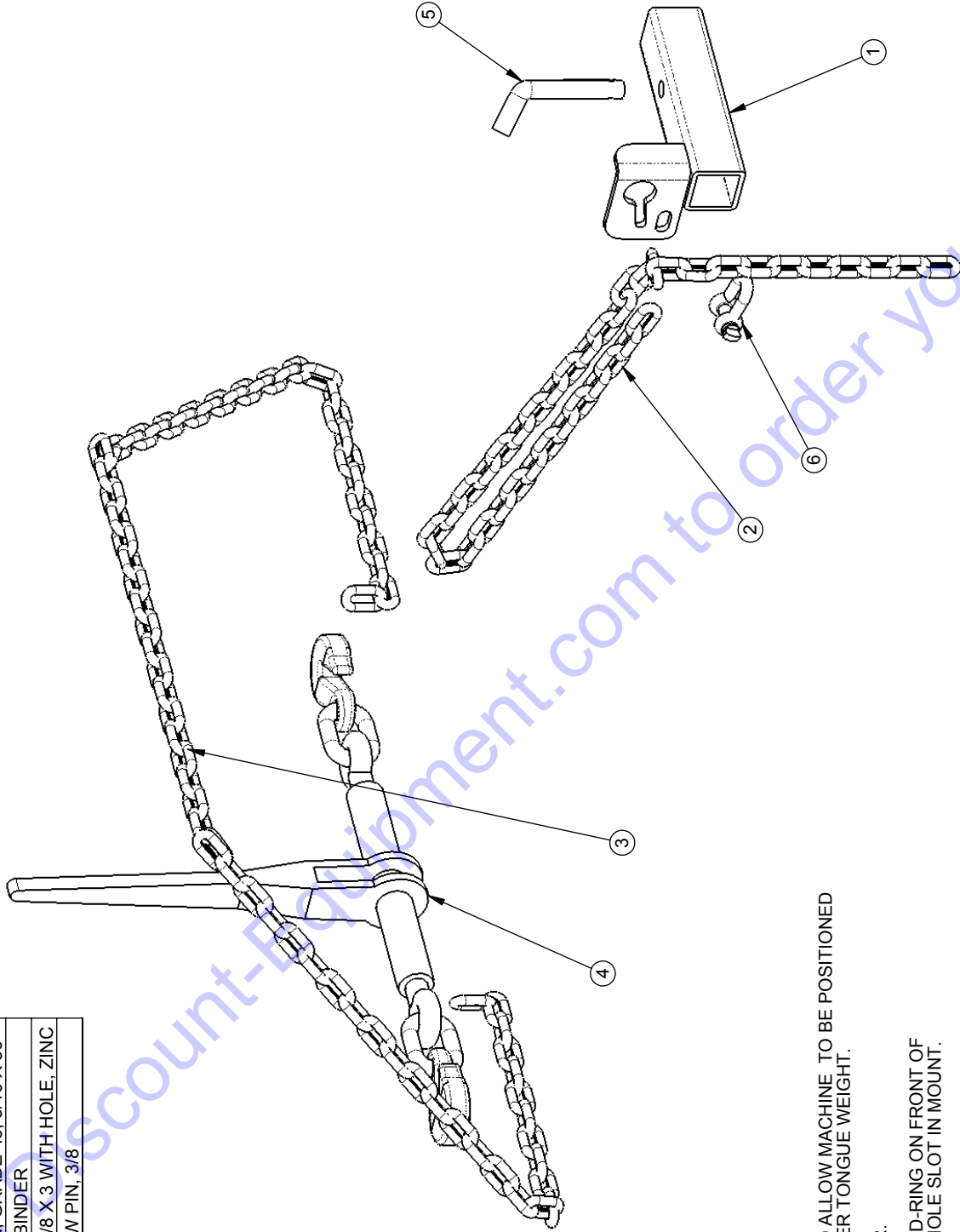
PRODUCT LINE: 4X6 W/ RTK, OPTION

SCALE: 1:6

SHEET 1 OF 1

DWG# 00340-RTK

REF	QTY.	PART NO.	DESCRIPTION
1	1	11574	CHAIN MOUNT
2	1	03828	TIE-DOWN CHAIN, GRADE 43, 5/16 X 42"
3	1	03829	TIE-DOWN CHAIN, GRADE 43, 5/16 X 86"
4	1	03822	RATCHET LOAD BINDER
5	1	10593	BENT ARM PIN, 5/8 X 3 WITH HOLE, ZINC
6	1	03827	SHACKLE, SCREW PIN, 3/8



NOTES:

1. CHAINS ARE LONG ENOUGH TO ALLOW MACHINE TO BE POSITIONED ON TRAILER FOR DESIRED TRAILER TONGUE WEIGHT.
2. DRIVE MACHINE ONTO TRAILER.
3. LOOP FRONT CHAIN THROUGH D-RING ON FRONT OF MACHINE FRAME, AND INTO KEYHOLE SLOT IN MOUNT.
4. BACK UP MACHINE UNTIL FRONT CHAIN IS TIGHT.
5. LOOP REAR CHAIN THROUGH CHAIN LOOPS ON REAR OF MACHINE FRAME, AND D-RINGS ON TRAILER. HOOK TO RATCHET LOAD BINDER AND TIGHTEN.

BARRETO

TITLE: TIE-DOWN KIT, SG

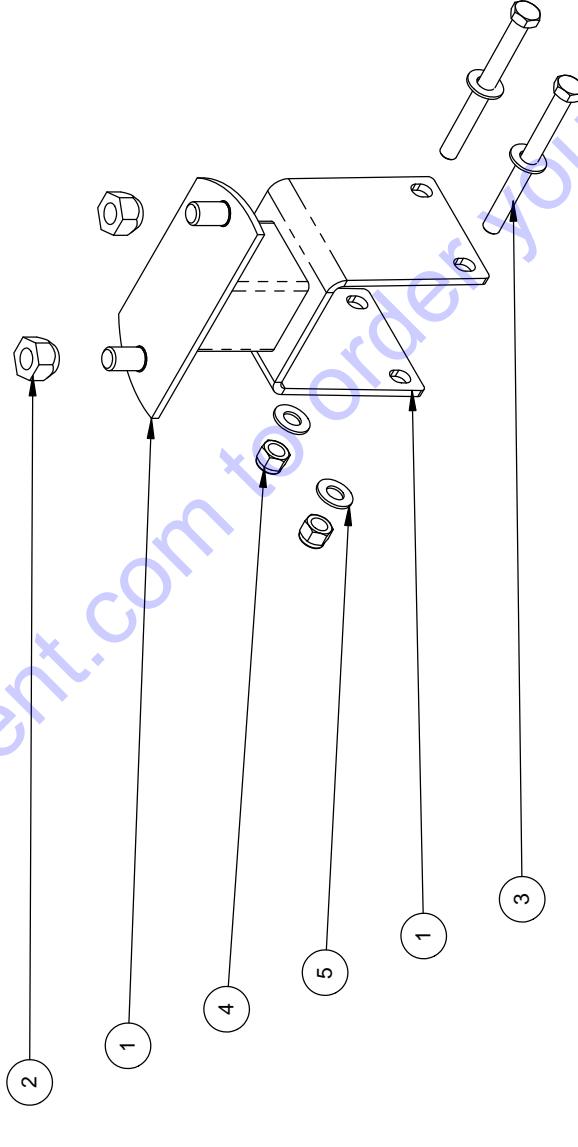
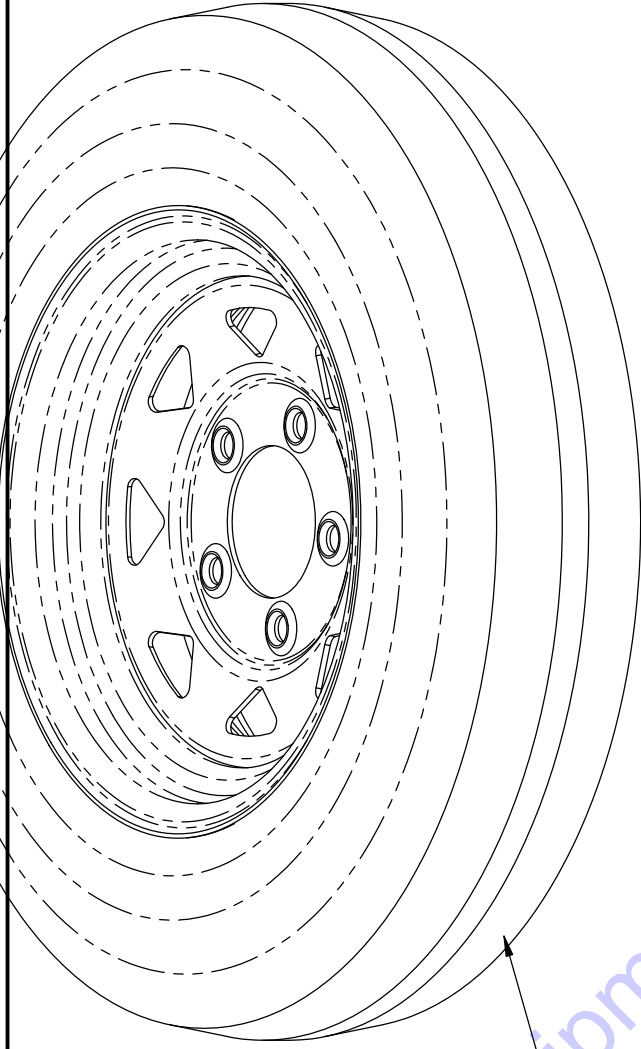
PRODUCT LINE: 4X6TBT DATE: 2/12/14

SCALE: 1:6 DWG# 00340-SG

SHEET 1 OF 1

ITEM NO.	QTY.	PART NO.	DESCRIPTION
1	1	12483	SPARE TIRE MOUNT
2	2	05042	NUT, LUG, 1/2-20 NF
3	2	10757	HH CAP SCREW, 3/8-16 NC X 4 G5 ZINC
4	2	05073	NUT, NYLOCK, 3/8-16 NC ZINC
5	4	05101	WASHER, 3/8 SAE ZINC
6	1	03814	TIRE & RIM, 5.30-12, 5 HOLE ON 4.5 BC

****TIRE NOT INCLUDED IN ASSY****



BARRETO

TITLE: OPTIONAL SPARE TIRE MOUNT

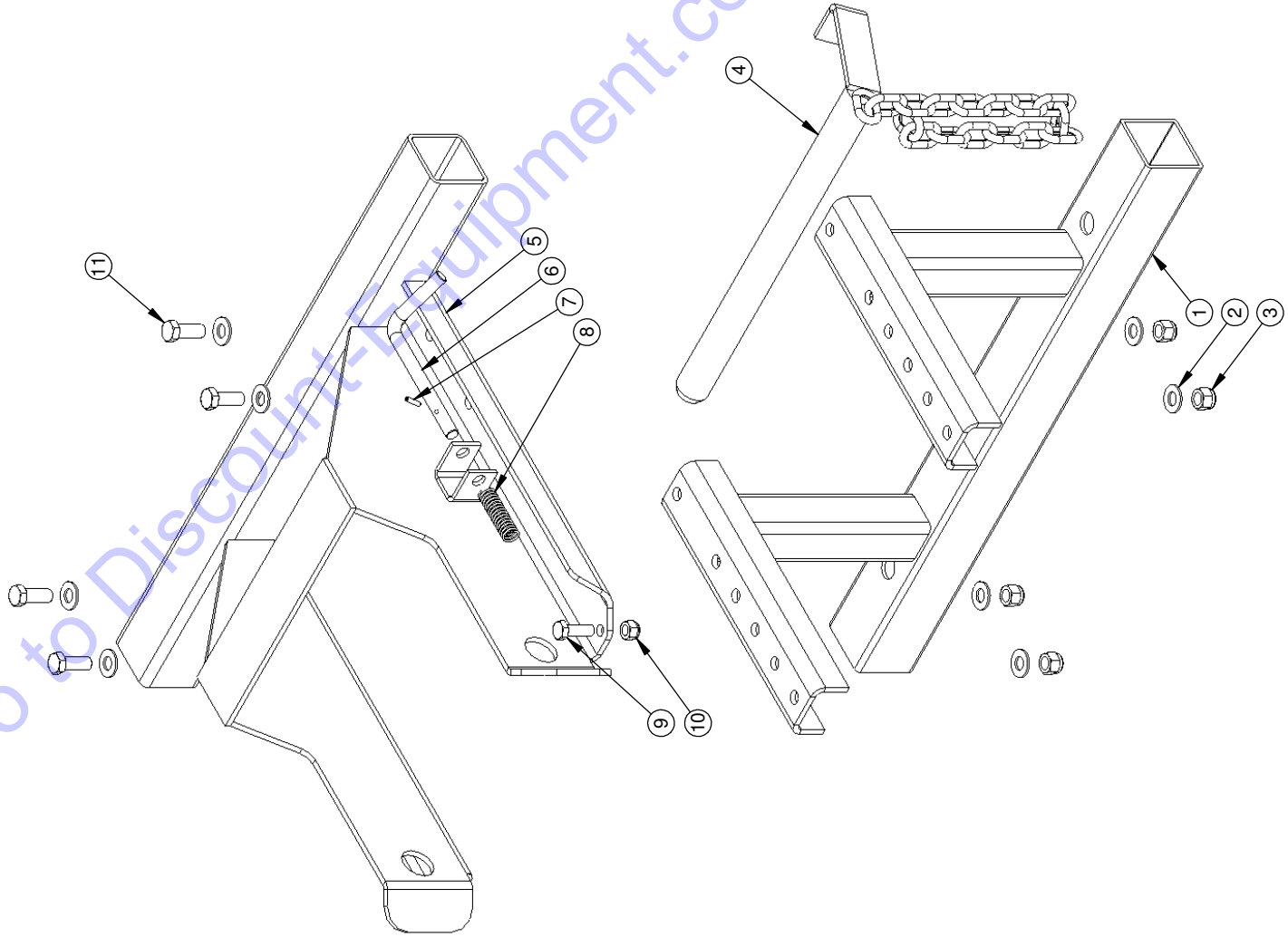
PRODUCT LINE: DATE: /08

SCALE: 1:4

DWG# 00379

SHEET 1 OF 1

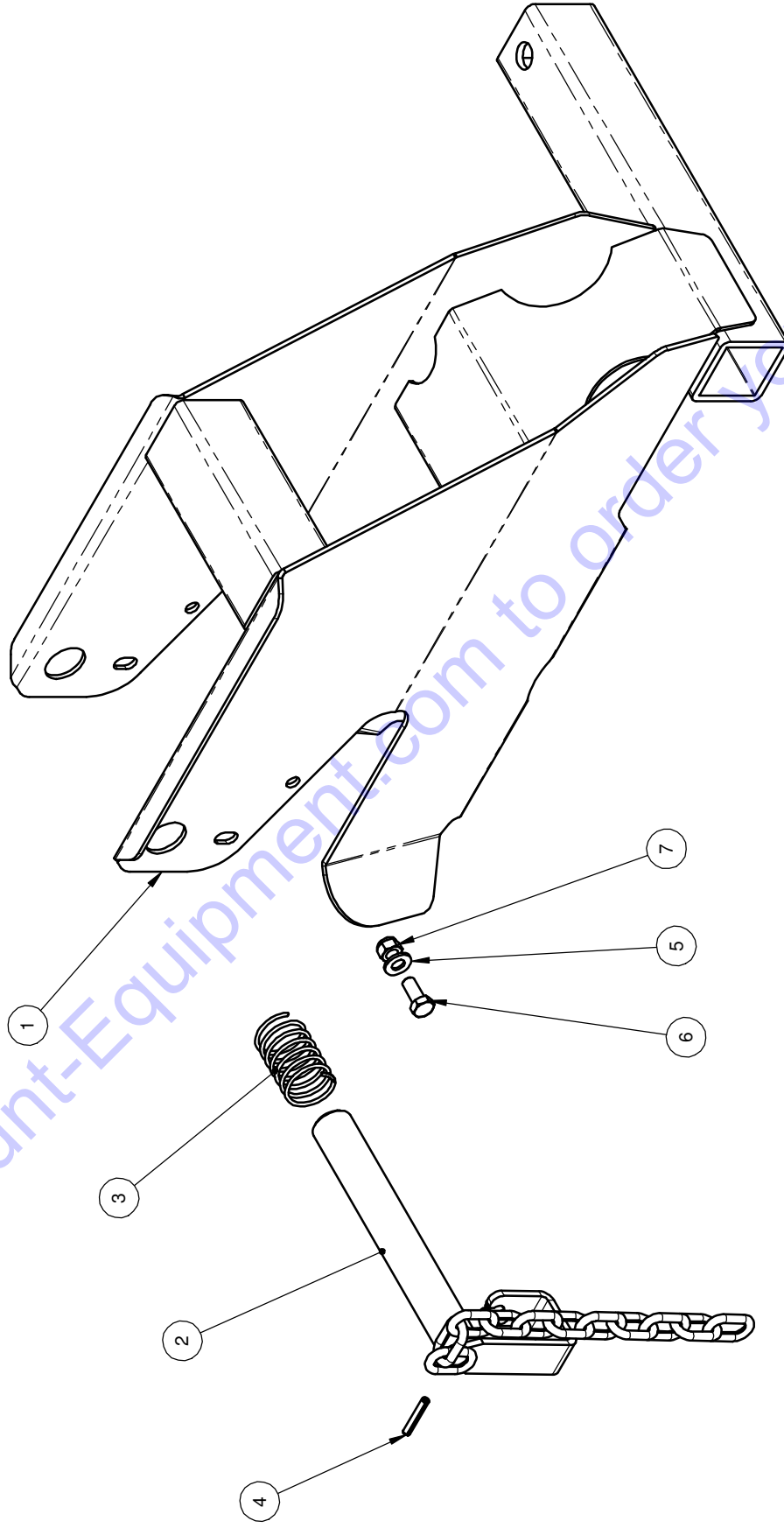
REF. QTY.	PART NO.	DESCRIPTION
1	11607	WHEEL LOCK, LOWER
2	05101	WASHER, 3/8 SAE ZINC
3	05073	NUT, NYLOCK, 3/8-16 NC ZINC
4	08208	WHEEL LOCK PIN
5	11608	WHEEL LOCK, UPPER
6	08215	LOCK PIN KEEPER
7	03812	ROLL PIN (SLOTTED SPRING), 1/8 X 5/8 ZINC
8	03810	SPRING
9	05315	HH CAP SCREW, 5/16-18 NC X 1 G5 ZINC
10	05273	NUT, NYLOCK, 5/16-18 NC ZINC
11	05059	HH CAP SCREW, 3/8-16 NC X 1 G5 ZINC



BARRETO

TITLE: ADJUSTABLE WHEEL LOCK,
1318/1324/1624/1824 TRENCHERS
PRODUCT LINE: 4X6TBT DATE: 5/6/08
SCALE: 1:5 DWG# 00462
SHEET 1 OF 1

REF. QTY.	PART NO.	DESCRIPTION
1	12115	712 WHEEL LOCK
2	12116	PIN
3	10592	SPRING
4	10290	ROLL PIN (SLOTTED SPRING), 3/16 X 1-1/8 ZINC
5	05068	WASHER, 5/16 SAE ZINC
6	05247	HH CAP SCREW, 5/16-18 NC X 3/4 G5 ZINC
7	05273	NUT, NYLOCK, 5/16-18 NC ZINC



TITLE: 712 WHEEL LOCK

PRODUCT LINE: AX6 TBT

DATE: 1-18-11

SCALE: 1:4

DWG# 00482

SHEET 1 OF 1

BARRETO

PARTS FINDER

**Search Website
by Part Number**



**Search Manual
Library For Parts
Manual & Lookup Part
Numbers – Purchase
or Request Quote**

Search Manuals

Enter your information to help us find the right parts manual for your machine.

* Brand:

* Model:

* Serial:

* Part Number:

**Can't Find Part or
Manual? Request Help
by Manufacturer,
Model & Description**

Parts Order Form

Please fill in the following information to help us find the right part for your machine.

Manufacturer:

Model:

Description:

Discount-Equipment.com is your online resource for quality parts & equipment.

Florida: **561-964-4949** Outside Florida TOLL FREE: **877-690-3101**

Need parts?

Click on this link: <http://www.discount-equipment.com/category/5443-parts/> and choose one of the options to help get the right parts and equipment you are looking for. Please have the machine model and serial number available in order to help us get you the correct parts. If you don't find the part on the website or on one of the online manuals, please fill out the request form and one of our experienced staff members will get back to you with a quote for the right part that your machine needs.

We sell worldwide for the brands: Genie, Terex, JLG, MultiQuip, Mikasa, Essick, Whiteman, Mayco, Toro Stone, Diamond Products, Generac Magnum, Airman, Haulotte, Barreto, Power Blanket, Nifty Lift, Atlas Copco, Chicago Pneumatic, Allmand, Miller Curber, Skyjack, Lull, Skytrak, Tsurumi, Husquvarna Target, Stow, Wacker, Sakai, Mi-T-M, Sullair, Basic, Dynapac, MBW, Weber, Bartell, Bennar Newman, Haulotte, Ditch Runner, Menegotti, Morrison, Contec, Buddy, Crown, Edco, Wyco, Bomag, Laymor, EZ Trench, Bil-Jax, F.S. Curtis, Gehl Pavers, Heli, Honda, ICS/PowerGrit, IHI, Partner, Imer, Clipper, MMD, Koshin, Rice, CH&E, General Equipment, Amida, Coleman, NAC, Gradall, Square Shooter, Kent, Stanley, Tamco, Toku, Hatz, Kohler, Robin, Wisconsin, Northrock, Oztec, Toker TK, Rol-Air, APT, Wylie, Ingersoll Rand / Doosan, Innovatech, Con X, Ammann, Mecalac, Makinex, Smith Surface Prep, Small Line, Wanco, Yanmar