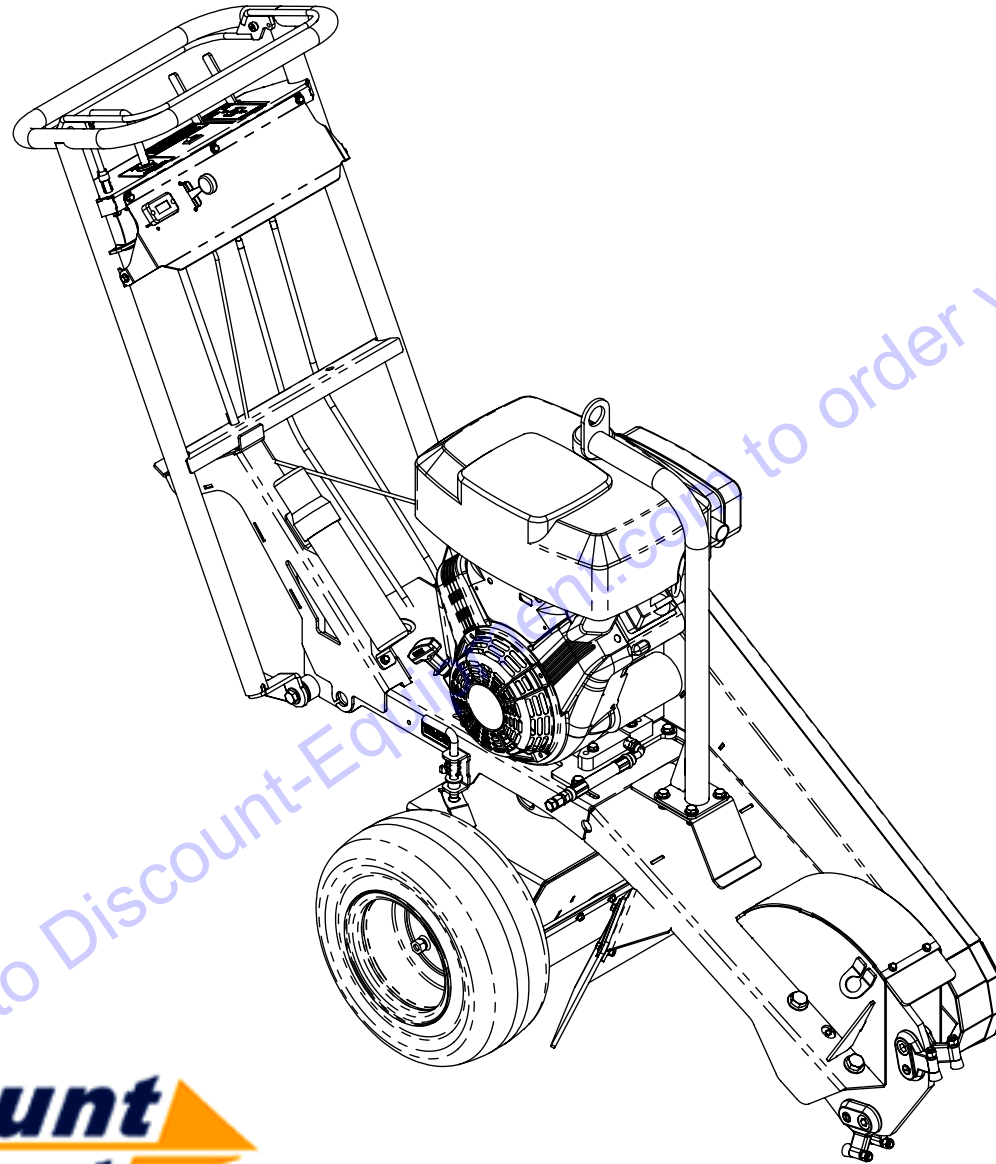


RELEASE DATE	12/15/2016
REVISED DATE	NEW
REVISION #	0



Go to Discount-Equipment.com to order your parts



www.discount-equipment.com

BARRETO

TITLE: PIVOT STUMP GRINDER	
PRODUCT LINE:	
SCALE: 1:24	DWG# E16SG
SHEET 1 OF 14	

THE

BARRETO

MODEL 13SGH-16SGB STUMP GRINDER



www.discount-equipment.com

Machine Identification Record

BARRETO Customer number _____

Machine model number _____

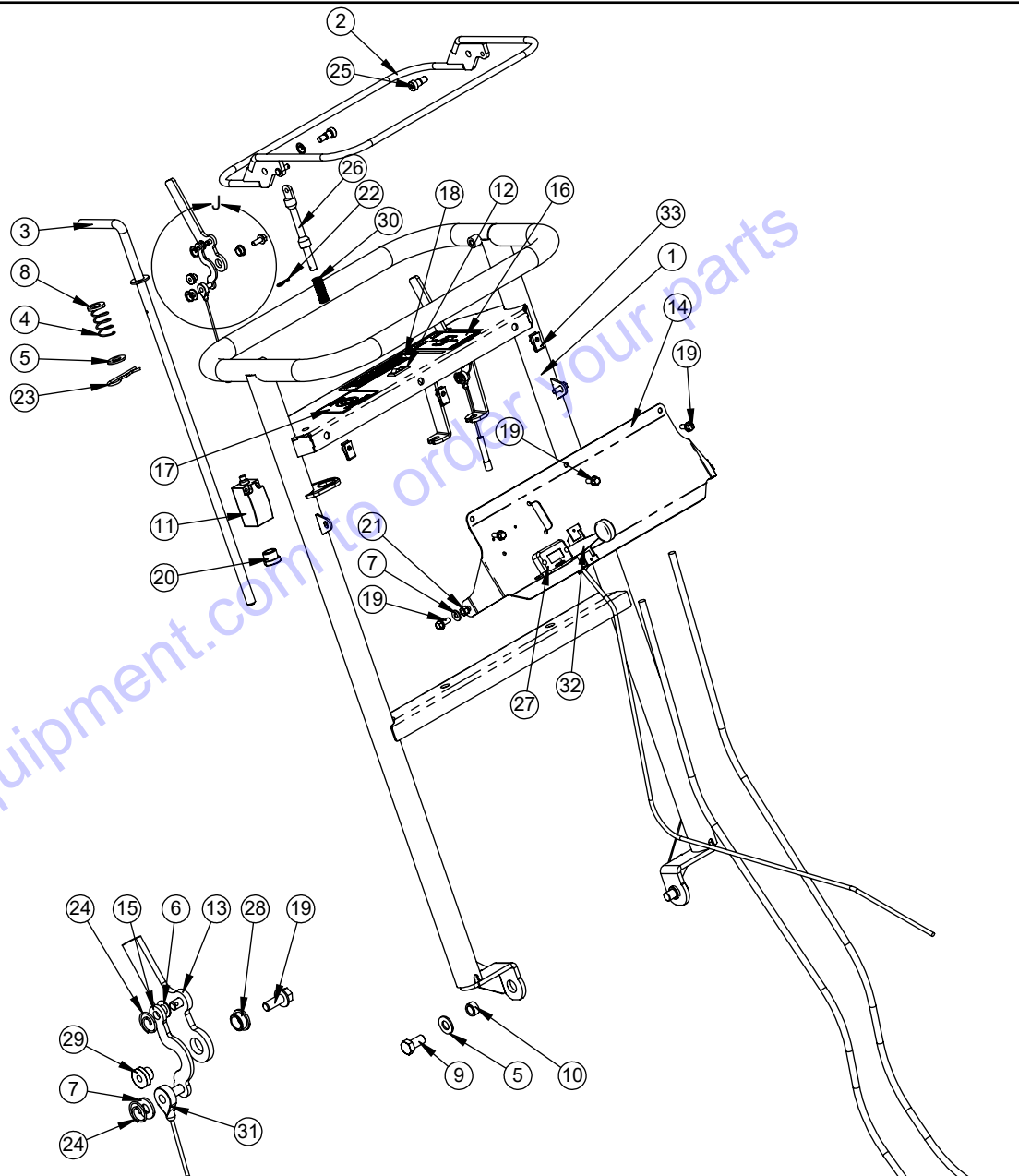
Machine serial number _____

Engine manufacturer _____

Engine model number _____

Engine serial number _____

ITEM NO.	PART NUMBER	DESCRIPTION	QTY.
1	14007	PIVOT SG UPRIGHT	1
2	14014	SWITCH BAIL	1
3	14015	UPRIGHT LOCK PIN	1
4	03352	SPRING, CENTURY 3385	1
5	05102	WASHER, 1/2 SAE ZINC HARDENED	3
6	03029-03	WASHER, 1/4 NYLON	1
7	05081	WASHER, 1/4 SAE ZINC	4
8	10469	THRUST WASHER, .500 X 1.000 X .125 NYLATRON	1
9	05067	HH CAP SCREW, 1/2-13 NC X 1 G5 ZINC	2
10	14029	PIVOT BUSHING	2
11	14030	EATON MOELLER LS-S11S	1
12	06420	ROCKER SWITCH, IGNITION OFF/ON	1
13	14031	BRAKE LEVER	2
14	14040	COVER PLATE	1
15	14044	CABLE LINK	2
16	14048	WHEEL LOCK DECAL	1
17	14049	ADJUSTMENT BAR DECAL	1
18	14050	OPERATION DECAL	1
19	05069	WHIZ-LOCK 1/4 - 20 X 5/8	8
20	14051	SWITCH BOLT	1
21	05096	NUT, NYLOCK, 1/4-20 NC ZINC	2
22	05310	HAIR SPRING COTTER #2	1
23	05142	HAIR SPRING COTTER #8	1
24	05039	CIRCLE COTTER CC-3	5
25	05111	SHSB, 3/8S X 3/8SL X 5/16 NC, BK OX	2
26	14034	SWITCH ROD	1
27	03009 R1	HOUR METER, WITH FLASH ALERT	1
28	11291	BUSHING, IGUS MFI-0608-04	2
29	14067	LEVER PIVOT	2
30	14055	SPRING - CENTURY 10700	1
31	14035	BRAKE CABLE	2
32	03535	THROTTLE CABLE	1
33	05365	CLIP NUT, 1/4-20	3



DETAIL J
SCALE 1 : 5

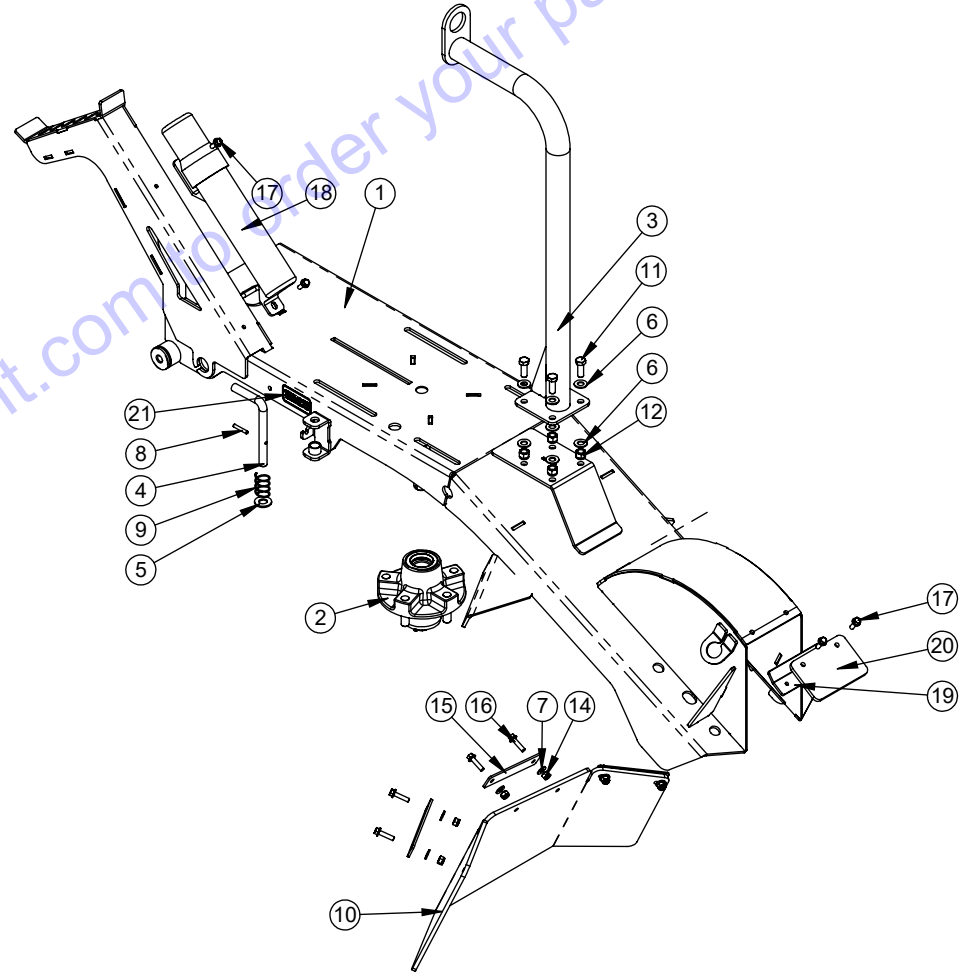
BARRETO

TITLE: PIVOT STUMP GRINDER

PRODUCT LINE:
SCALE: 1:10
SHEET 2 OF 7

DWG# E16SG

ITEM NO.	PART NUMBER	DESCRIPTION	QTY.
1	14000	PIVOT GRINDER FRAME	1
2	03804	WHEEL HUB, 5 ON 4.5 BC	1
3	14022	LIFT EYE	1
4	14024	LOCK PIN	1
5	05102	WASHER, 1/2 SAE ZINC HARDENED	1
6	05101	WASHER, 3/8 SAE ZINC	8
7	05081	WASHER, 1/4 SAE ZINC	6
8	10290	ROLL PIN (SLOTTED SPRING), 3/16 X 1-1/8 ZINC	1
9	03352	SPRING, CENTURY 3385	1
10	14046	WHEEL FLAP	1
11	05059	HH CAP SCREW, 3/8-16 NC X 1 G5 ZINC	4
12	05073	NUT, NYLOCK, 3/8-16 NC ZINC	4
14	05096	NUT, NYLOCK, 1/4-20 NC ZINC	6
15	14053	FLAP BOLT PLATE	3
16	05368	WHIZ-LOCK 1/4 - 20 X 1	6
17	05049	WHIZ-LOCK 1/4 - 20 X 3/4	4
18	12090	INSTRUCTION CANISTER	1
19	14068	WHEEL FLAP PLATE	1
20	14069	CUTTER FLAP	1
21	14081	OPERATION DECAL	1



BARRETO

TITLE: PIVOT STUMP GRINDER

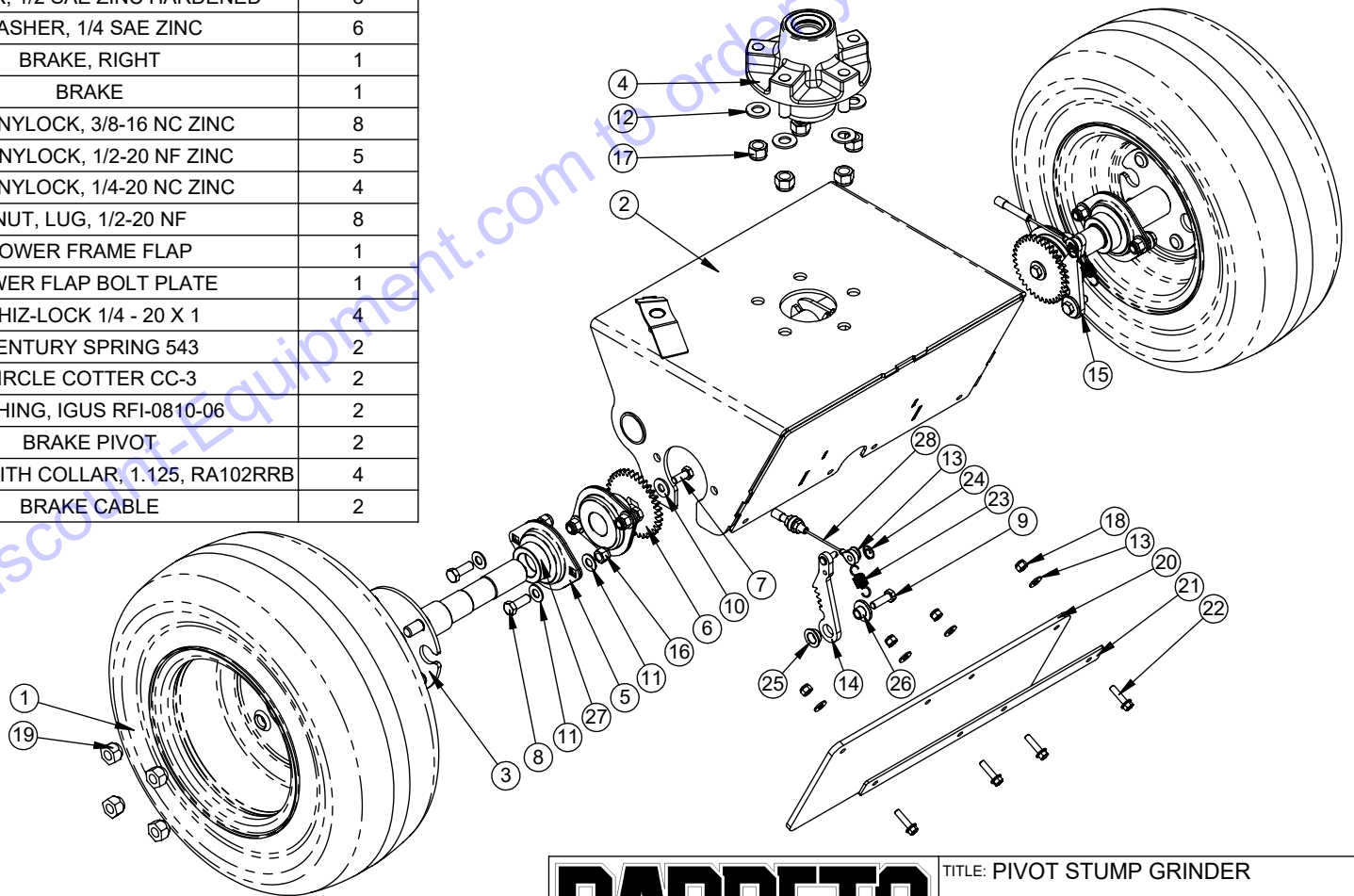
PRODUCT LINE:

SCALE: 1:12

SHEET 6 OF 7

DWG# E16SG

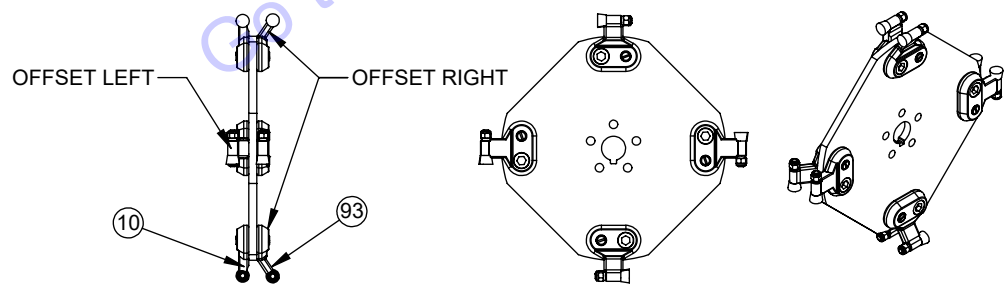
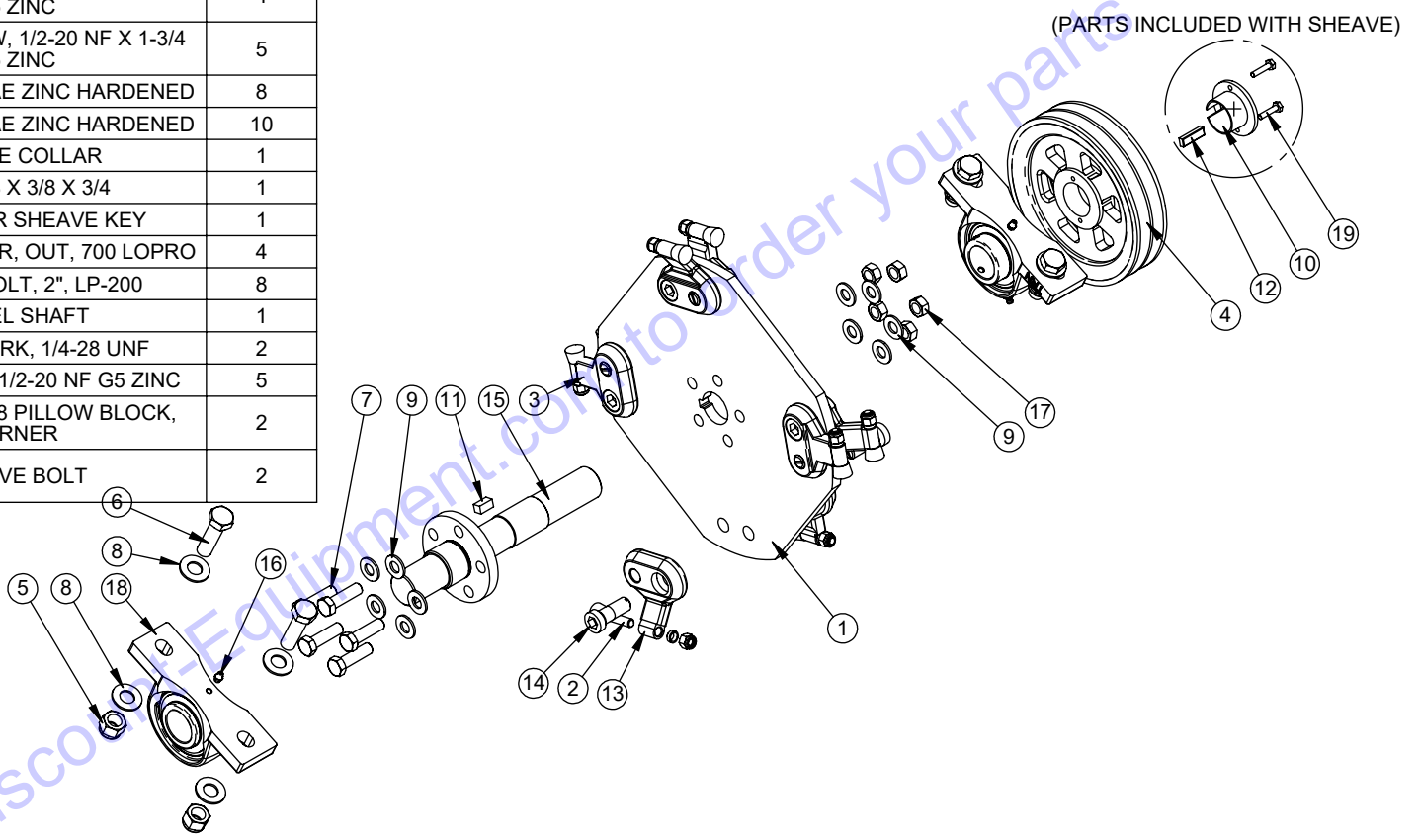
ITEM NO.	PART NUMBER	DESCRIPTION	QTY.
1	14003	TURF SAVER II TIRE	2
2	14001	WHEEL FRAME	1
3	14004	PIVOT SG AXLE	2
4	03804	WHEEL HUB, 5 ON 4.5 BC	1
5	03283	BEARING FLANGE SET	4
6	14045	BRAKE PLATE	2
7	05247	HH CAP SCREW, 5/16-18 NC X 3/4 G5 ZINC	2
8	05059	HH CAP SCREW, 3/8-16 NC X 1 G5 ZINC	8
9	05315	HH CAP SCREW, 5/16-18 NC X 1 G5 ZINC	2
10	10615	WASHER, 5/16 USS ZINC	2
11	05101	WASHER, 3/8 SAE ZINC	16
12	05102	WASHER, 1/2 SAE ZINC HARDENED	5
13	05081	WASHER, 1/4 SAE ZINC	6
14	14041R	BRAKE, RIGHT	1
15	14041	BRAKE	1
16	05073	NUT, NYLOCK, 3/8-16 NC ZINC	8
17	05075	NUT, NYLOCK, 1/2-20 NF ZINC	5
18	05096	NUT, NYLOCK, 1/4-20 NC ZINC	4
19	05042	NUT, LUG, 1/2-20 NF	8
20	14047	LOWER FRAME FLAP	1
21	14054	LOWER FLAP BOLT PLATE	1
22	05368	WHIZ-LOCK 1/4 - 20 X 1	4
23	14056	CENTURY SPRING 543	2
24	05039	CIRCLE COTTER CC-3	2
25	10100	BUSHING, IGUS RFI-0810-06	2
26	14065	BRAKE PIVOT	2
27	03306	BEARING WITH COLLAR, 1.125, RA102RRB	4
28	14035	BRAKE CABLE	2



BARRETO

TITLE: PIVOT STUMP GRINDER
 PRODUCT LINE:
 SCALE: 1:8
 SHEET 3 OF 7
 DWG# E16SG

ITEM NO.	PART NUMBER	DESCRIPTION	QTY.
1	14010	CUTTER WHEEL	1
2	12280	CUT TOOTH, 700 LOPRO GREEN	8
3	12281	STRAIGHT HOLDER, 700 LOPRO	4
4	14009-1	BLACKSTAR 2BK80H SHEAVE	1
5	05099	NUT, NYLOCK, 5/8-11 NC ZINC	4
6	05332	HH CAP SCREW, 5/8-11 NC X 2-1/4 G5 ZINC	4
7	10257	HH CAP SCREW, 1/2-20 NF X 1-3/4 G5 ZINC	5
8	05272	WASHER, 5/8 SAE ZINC HARDENED	8
9	05102	WASHER, 1/2 SAE ZINC HARDENED	10
10	14009-2	SHEAVE COLLAR	1
11	11043	KEY, 3/8 X 3/8 X 3/4	1
12	14009-3	BLACKSTAR SHEAVE KEY	1
13	12282	ANGLED HOLDER, OUT, 700 LOPRO	4
14	12283-ROO	CUTTER BOLT, 2", LP-200	8
15	14032	WHEEL SHAFT	1
16	05044	GREASE ZERK, 1/4-28 UNF	2
17	05076	NUT, GRIPCO, 1/2-20 NF G5 ZINC	5
18	14008-M	BEARING, P208 PILLOW BLOCK, TURNER	2
19	14009-4	SHEAVE BOLT	2

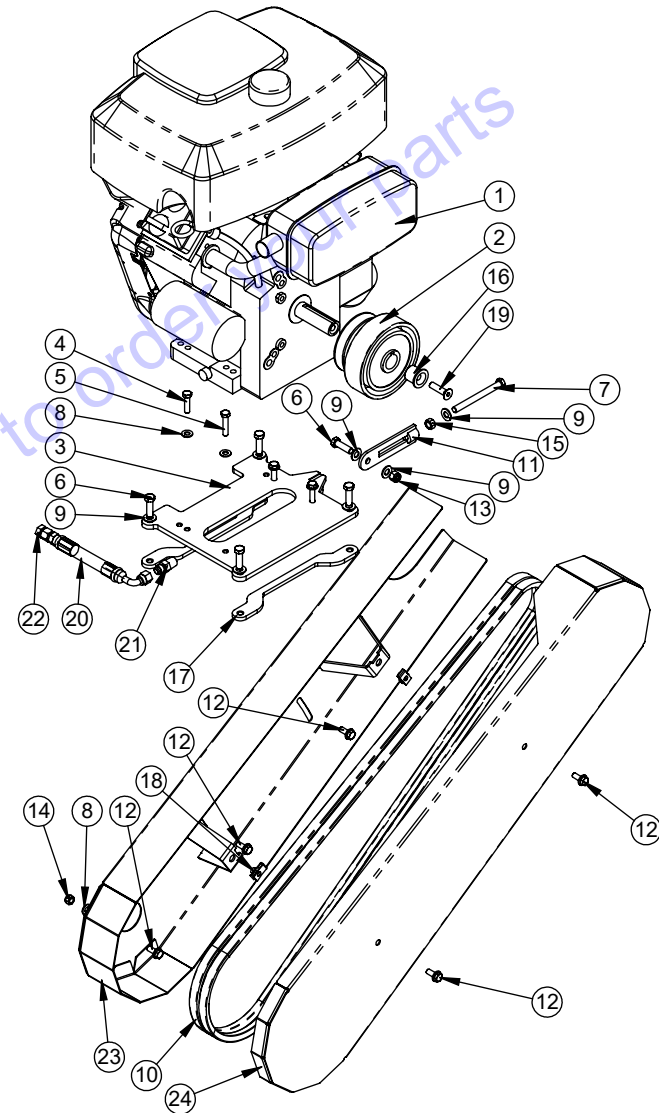


BARRETO TITLE: PIVOT STUMP GRINDER

PRODUCT LINE: _____

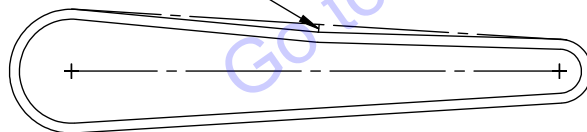
SCALE: 1:24 SHEET 4 OF 7 DWG# E16SG

ITEM NO.	PART NUMBER	DESCRIPTION	QTY.
1	07001	ENGINE, 16 HP B&S	1
2	14012	NORAM 180009 CLUTCH	1
3	14016	ENGINE TENSION PLATE	1
4	05297	HH CAP SCREW, 5/16-18 NC X 1-1-4 G5 ZINC	2
5	05294	HH CAP SCREW, 5/16-18 NC X 1-1/2 G5 ZINC	2
6	05091	HH CAP SCREW, 3/8-16 NC X 1-1/4 G5 ZINC	5
7	14079	HH CAP SCREW, 3/8-16 NC X 4 G5 ZINC FULL THREAD	1
8	05068	WASHER, 5/16 SAE ZINC	5
9	05101	WASHER, 3/8 SAE ZINC	7
10	14018	ARAMAX BK74 BELT	2
11	14027	ENGINE TENSIONER	1
12	05140	WHIZ-LOCK 5/16 - 18 X 3/4	5
13	05073	NUT, NYLOCK, 3/8-16 NC ZINC	1
14	05273	NUT, NYLOCK, 5/16-18 NC ZINC	1
15	10928	NUT, 3/8-16 NC GRB PLAIN	1
16	14060	ENGINE SHAFT SPACER	1
17	14066	ENGINE NUT BAR	2
18	05359	CLIP NUT, 5/16-18	2
19	14058	FLAT SOCKET CAP SCREW 3/8-24 X 1-1/2"	1
20	12340T	HOSE, CYLINDER VALVE - RETURN JCT	1
21	10863	HYD ADAPTER 2404-6-6	1
22	04539	FITTING, 2408-6	1
23	14023 R1	INSIDE BELT COVER	1
24	14028 R1	BELT COVER	1



V-BELT TENSION

1/2"-3/4" DEFLECTION



BARRETO

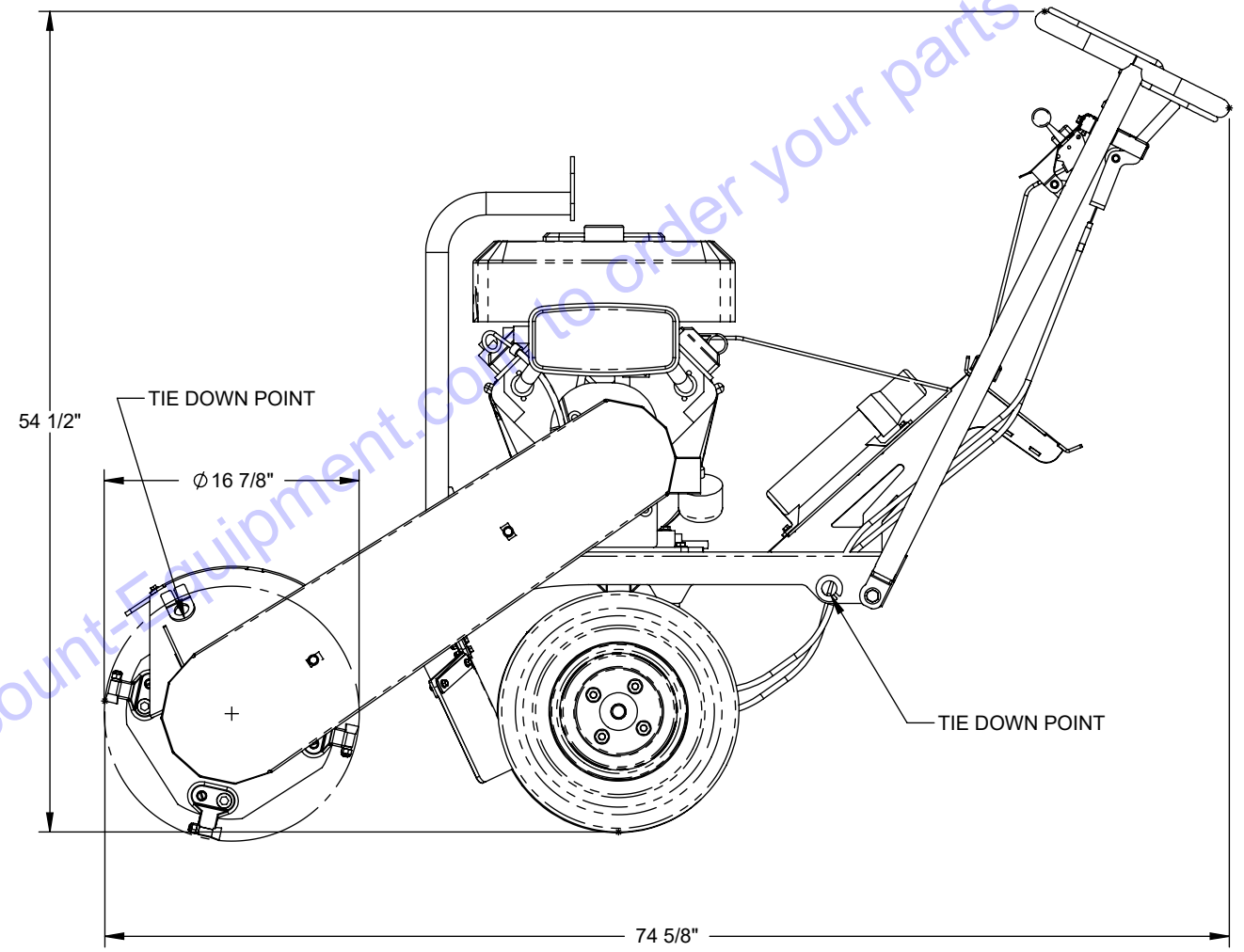
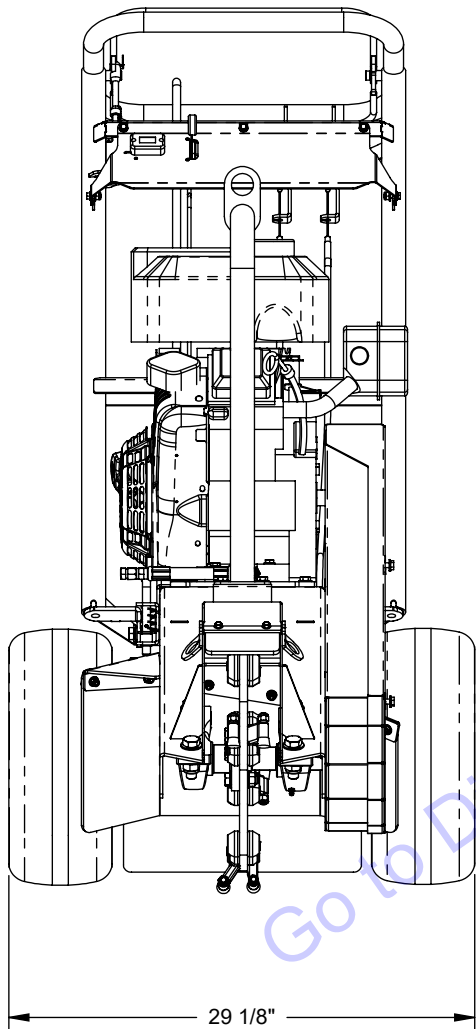
TITLE: PIVOT STUMP GRINDER

PRODUCT LINE:

SCALE: 1:24

SHEET 5 OF 7

DWG# E16SG



BARRETO	TITLE: PIVOT STUMP GRINDER	
	PRODUCT LINE:	
	SCALE: 1:24	DWG# E16SG
	SHEET 7 OF 7	

<u>SMALL CUTTER WHEEL REPLACEMENT PARTS</u>			
<u>Part#</u>	<u>Description</u>		
12280	Cutter tooth, includes collar and nut, 700 series Wearsharp		
12280-K2	Set of 8 cutter teeth, 700 series Wearsharp		
12280-COMP2	Complete set of teeth, holders and bolts for the cutter wheel		
12281	Tooth holder, straight. 700 Wearsharp		
12281-K2	Tooth holder set of 8, includes 4 straight and 4 angled		
12282	Tooth holder, angled, 700 Wearsharp		
12283-ROO	Cutter bolt, 2", LP-200		
12283-ROO-K	Set of 8, 2" cutter bolts		
12284	Tooth collar, 700 series Wearsharp (included with tooth, 12280)		
05273	Tooth nut, 700 series Wearsharp (included with tooth, 12280)		

Go to Discount-Equipment.com to order your parts

13/16SG stump grinder decals

P/N 03040-01



P/N 03040-03



P/N 03341-07



P/N 03040-11



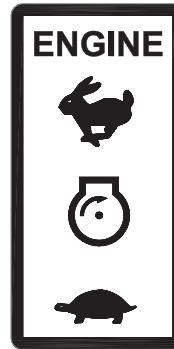
P/N 03040-04



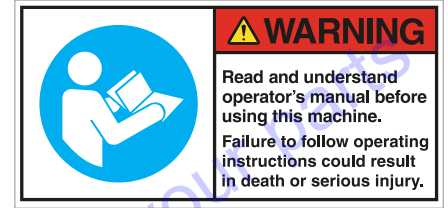
P/N 04440-02



P/N 04440-05



P/N 04451-09



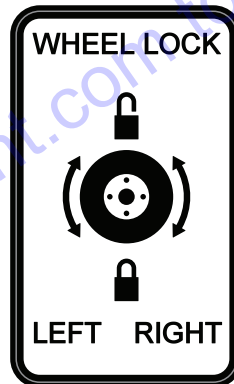
P/N 04440-12



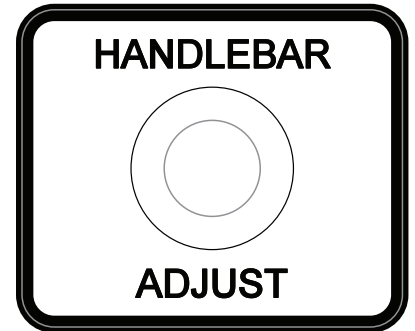
P/N 04451-symbols



P/N 14048



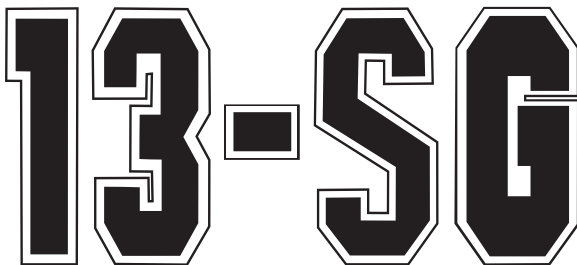
P/N 14049



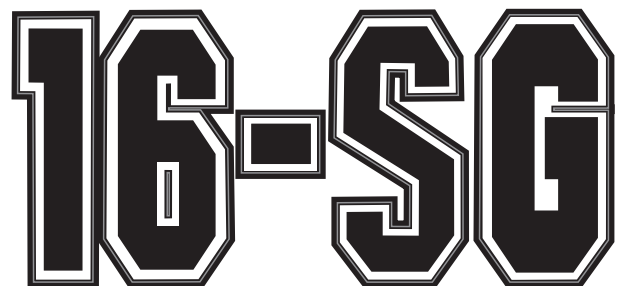
P/N 14050



P/N 14071



P/N 14052



ORDER PART# SGP-DECALS FOR THE COMPLETE SET.

PARTS FINDER

**Search Website
by Part Number**



**Search Manual
Library For Parts
Manual & Lookup Part
Numbers – Purchase
or Request Quote**

Search Manuals

Enter your information to help us find the right parts manual for your machine.

* Brand:

* Model:

* Serial:

* Part Number:

SEARCH

**Can't Find Part or
Manual? Request Help
by Manufacturer,
Model & Description**

Parts Order Form

Please fill in the following information to help us find the right part for your machine.

Manufacturer:	<input type="text"/>
Model:	<input type="text"/>
Description:	<input type="text"/>
Part Number:	<input type="text"/>
Quantity:	<input type="text"/>
Notes:	<input type="text"/>

Submit

Discount-Equipment.com is your online resource for quality parts & equipment.

Florida: **561-964-4949** Outside Florida TOLL FREE: **877-690-3101**

Need parts?

Click on this link: <http://www.discount-equipment.com/category/5443-parts/> and choose one of the options to help get the right parts and equipment you are looking for. Please have the machine model and serial number available in order to help us get you the correct parts. If you don't find the part on the website or on one of the online manuals, please fill out the request form and one of our experienced staff members will get back to you with a quote for the right part that your machine needs.

We sell worldwide for the brands: Genie, Terex, JLG, MultiQuip, Mikasa, Essick, Whiteman, Mayco, Toro Stone, Diamond Products, Generac Magnum, Airman, Haulotte, Barreto, Power Blanket, Nifty Lift, Atlas Copco, Chicago Pneumatic, Allmand, Miller Curber, Skyjack, Lull, Skytrak, Tsurumi, Husquvarna Target, Stow, Wacker, Sakai, Mi-T-M, Sullair, Basic, Dynapac, MBW, Weber, Bartell, Bennar Newman, Haulotte, Ditch Runner, Menegotti, Morrison, Contec, Buddy, Crown, Edco, Wyco, Bomag, Laymor, EZ Trench, Bil-Jax, F.S. Curtis, Gehl Pavers, Heli, Honda, ICS/PowerGrit, IHI, Partner, Imer, Clipper, MMD, Koshin, Rice, CH&E, General Equipment, Amida, Coleman, NAC, Gradall, Square Shooter, Kent, Stanley, Tamco, Toku, Hatz, Kohler, Robin, Wisconsin, Northrock, Oztec, Toker TK, Rol-Air, APT, Wylie, Ingersoll Rand / Doosan, Innovatech, Con X, Ammann, Mecalac, Makinex, Smith Surface Prep, Small Line, Wanco, Yanmar