

BARRETO

MODEL 912HM HYDRAULIC TRENCHER EXPLODED VIEWS WITH PART NUMBERS

CONGRATULATIONS!

You are now the proud owner of a BARRETO trencher. The following pages have detailed views of your trencher, along with corresponding part numbers. If you have any questions or need any replacement parts in the future, please contact us at your convenience. Our toll-free phone number, fax and email are listed below and parts may be ordered through any of these methods.

Thank you for your patronage and confidence in BARRETO equipment.

Machine Identification Record:

BARRETO Customer number _____

Machine model number _____

Machine serial number _____

Engine manufacturer _____

Engine model number _____

Engine serial number _____

PARTS FINDER

**Search Website
by Part Number**



**Search Manual
Library For Parts
Manual & Lookup Part
Numbers – Purchase
or Request Quote**

Search Manuals

Enter your information to help us find the right parts manual for your machine.

* Brand:

* Model:

* Serial:

* Part Number:

SEARCH

**Can't Find Part or
Manual? Request Help
by Manufacturer,
Model & Description**

Parts Order Form

Please fill in the following information to help us find the right part for your machine.

Manufacturer:	<input type="text"/>
Model:	<input type="text"/>
Description:	<input type="text"/>
Part Number:	<input type="text"/>
Quantity:	<input type="text"/>
Notes:	<input type="text"/>

Discount-Equipment.com is your online resource for quality parts & equipment.

Florida: **561-964-4949** Outside Florida TOLL FREE: **877-690-3101**

Need parts?

Click on this link: <http://www.discount-equipment.com/category/5443-parts/> and choose one of the options to help get the right parts and equipment you are looking for. Please have the machine model and serial number available in order to help us get you the correct parts. If you don't find the part on the website or on one of the online manuals, please fill out the request form and one of our experienced staff members will get back to you with a quote for the right part that your machine needs.

We sell worldwide for the brands: Genie, Terex, JLG, MultiQuip, Mikasa, Essick, Whiteman, Mayco, Toro Stone, Diamond Products, Generac Magnum, Airman, Haulotte, Barreto, Power Blanket, Nifty Lift, Atlas Copco, Chicago Pneumatic, Allmand, Miller Curber, Skyjack, Lull, Skytrak, Tsurumi, Husquvarna Target, Stow, Wacker, Sakai, Mi-T-M, Sullair, Basic, Dynapac, MBW, Weber, Bartell, Bennar Newman, Haulotte, Ditch Runner, Menegotti, Morrison, Contec, Buddy, Crown, Edco, Wyco, Bomag, Laymor, EZ Trench, Bil-Jax, F.S. Curtis, Gehl Pavers, Heli, Honda, ICS/PowerGrit, IHI, Partner, Imer, Clipper, MMD, Koshin, Rice, CH&E, General Equipment, Amida, Coleman, NAC, Gradall, Square Shooter, Kent, Stanley, Tamco, Toku, Hatz, Kohler, Robin, Wisconsin, Northrock, Oztec, Toker TK, Rol-Air, APT, Wylie, Ingersoll Rand / Doosan, Innovatech, Con X, Ammann, Mecalac, Makinex, Smith Surface Prep, Small Line, Wanco, Yanmar

TEM NO.	QTY.	PART NO.	DESCRIPTION
1	1	00268	TRANSMISSION ASSEMBLY
2	1	00256 R1	FREE WHEELING HUB & WHEEL, SET RH & LH
3	1	00267	LID ASSEMBLY
4	1	00249	MANIFOLD ASSEMBLY
5	1	10232	BODY
6	2	10174	AXLE BEARING HOUSING
7	1	10238	TRANSMISSION BRACE, REAR
8	1	10240	TRANSMISSION BRACET, FRONT
9	1	03014TR	AXLE COUPLER
10	1	10231	AXLE, LEFT
11	4	05606	SNAP RING, 1-1/8" EXTERNAL
12	2	05034	SNAP RING, 1-3/16 EXT, SH-118
13	4	03012	SEAL, AXLE
14	2	03280	BALL BEARING, SKF 6206
15	1	03503	SIGHT GAUGE
16	1	10361	FITTING, 6409-8 PLUG
17	2	05018	KEY, 1/4 X 1/4 X 1-1/4 HARDENED
18	2	05199	KEY, 1/4 X 1/4 X 2-1/2 HARDENED
19	1	03040-57	DECAL, "HYDRAULIC OIL LEVEL"
20	1	04440-08	DECAL:912 S/N
21	2	03520	MAGNET
22	6	10623	O-RING, 2-010, 3/8 OD X 1/16 SECTION
23	2	03923	O-RING, 2-142, 2-9/16 OD X 3/32 SECTION
24	2	10602	O-RING, 2-239, 3-7/8 OD X 1/8 SECTION
25	2	05044	GREASE ZERK, 1/4-28 UNF
26	1	03008	THRUST WASHER, 1.136 X 1.784 X .032 HARD
27	8	05140	WHIZ-LOCK 5/16 - 18 X 3/4
28	4	05068	WASHER, 5/16 SAE ZINC
29	6	12113	WHIZ-LOCK 1/4 - 20 X 1-1/2

UPDATED 10/4/16

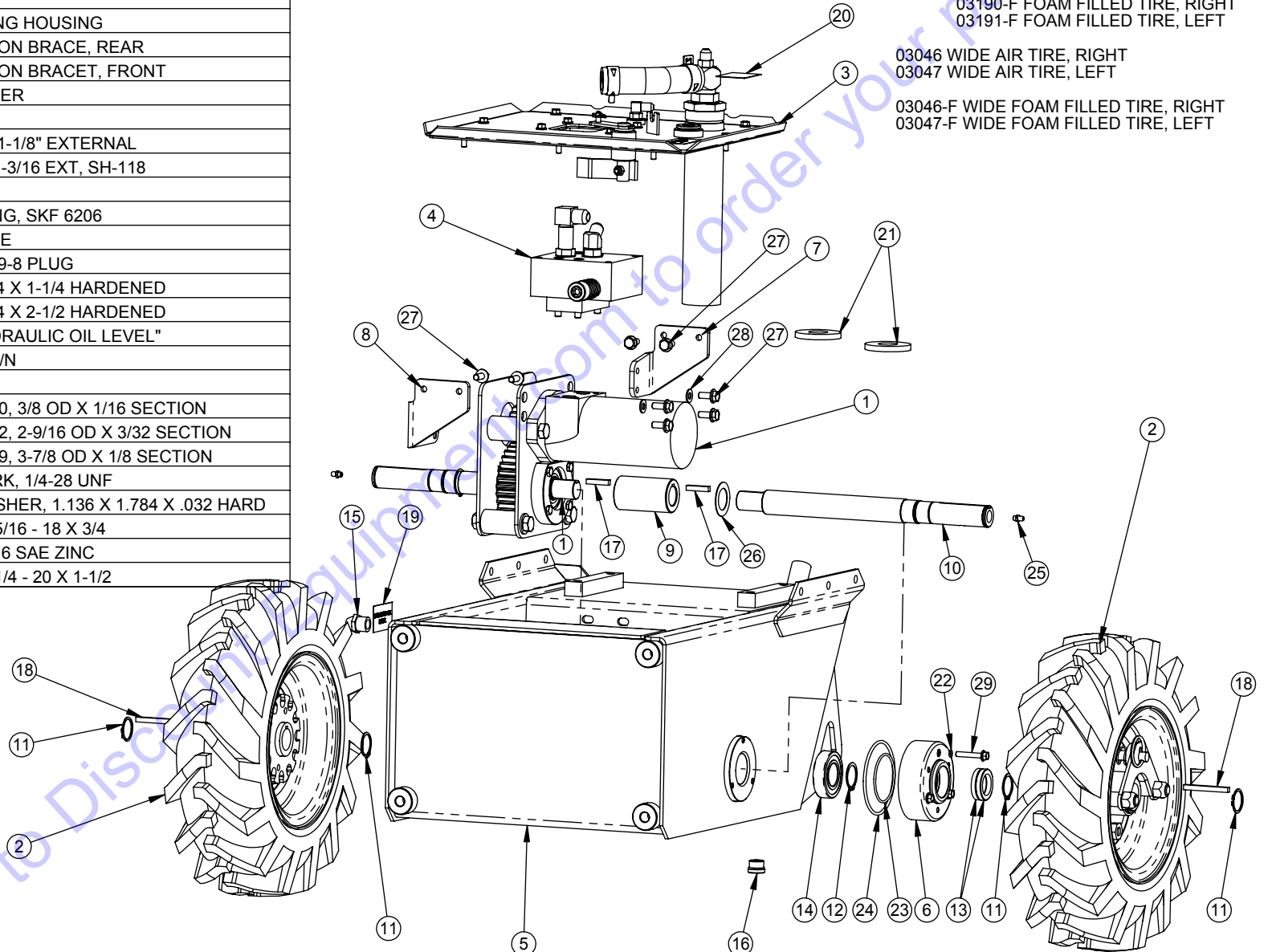
TIRE OPTIONS:

00256 R1 AIR TIRES & HUBS KIT (SEE DRAWING)
03190-FW AIR TIRE, RIGHT
03191-FW AIR TIRE, LEFT

00256 R1-F FOAM FILLED TIRES & HUBS KIT
03190-F FOAM FILLED TIRE, RIGHT
03191-F FOAM FILLED TIRE, LEFT

03046 WIDE AIR TIRE, RIGHT
03047 WIDE AIR TIRE, LEFT

03046-F WIDE FOAM FILLED TIRE, RIGHT
03047-F WIDE FOAM FILLED TIRE, LEFT



BARRETO

TITLE: BODY ASSEMBLY

PRODUCT LINE: TRENCHER 912

DATE: 3/11/04

SCALE: 1:8

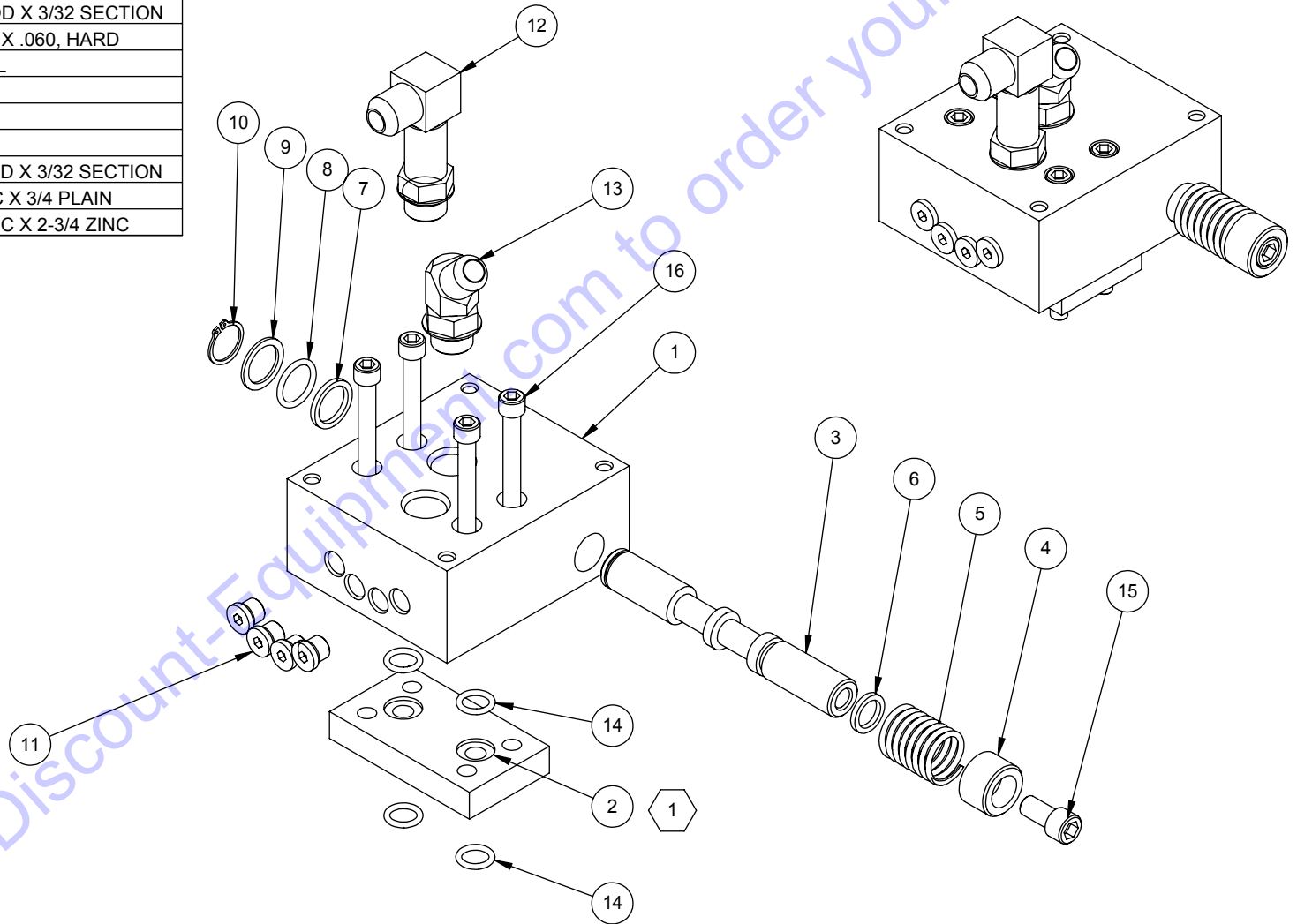
SHEET 1 OF 1

DWG# 00247

REF	QTY.	PART NO.	DESCRIPTION
1	1	02200	MANIFOLD, WHEEL MOTOR
2	1	02203W	MANIFOLD SPACER
3	1	02201	SPOOL, DRIVE DUMP
4	1	10236	SPOOL SPACER
5	1	03055	SPRING, VALVE SPOOL RETURN
6	1	10614	QUAD RING #4-113
7	1	10470	QUAD RING #4-116
8	1	03225	O-RING, 2-116N70, 15-16 OD X 3/32 SECTION
9	1	03200	THRUST WASHER, .75 X 1 X .060, HARD
10	1	05216	SNAP RING, 3/4 EXTERNAL
11	4	03300	FITTING, 6409-4 PLUG
12	1	04533	FITTING, 6801-8-8-LL
13	1	04210	FITTING, 6802-8-8
14	4	03226	O-RING, 2-112N70, 11/16 OD X 3/32 SECTION
15	1	10237	SH CAP SCREW, 3/8-16 NC X 3/4 PLAIN
16	4	05362	SH CAP SCREW, 5/16-18 NC X 2-3/4 ZINC

1 UNITS WITH A WHITE BRAND WHEEL DRIVE MOTOR
NEED MANIFOLD SPACER 02203W

UNITS WITH A CHAR-LYNN EATON BRAND WHEEL DRIVE MOTOR
NEED MANIFOLD SPACER 02203CT



Go to Discount-Equipment.com to order your parts

BARRETO

TITLE: MANIFOLD ASSEMBLY

PRODUCT LINE: TRENCHER 912

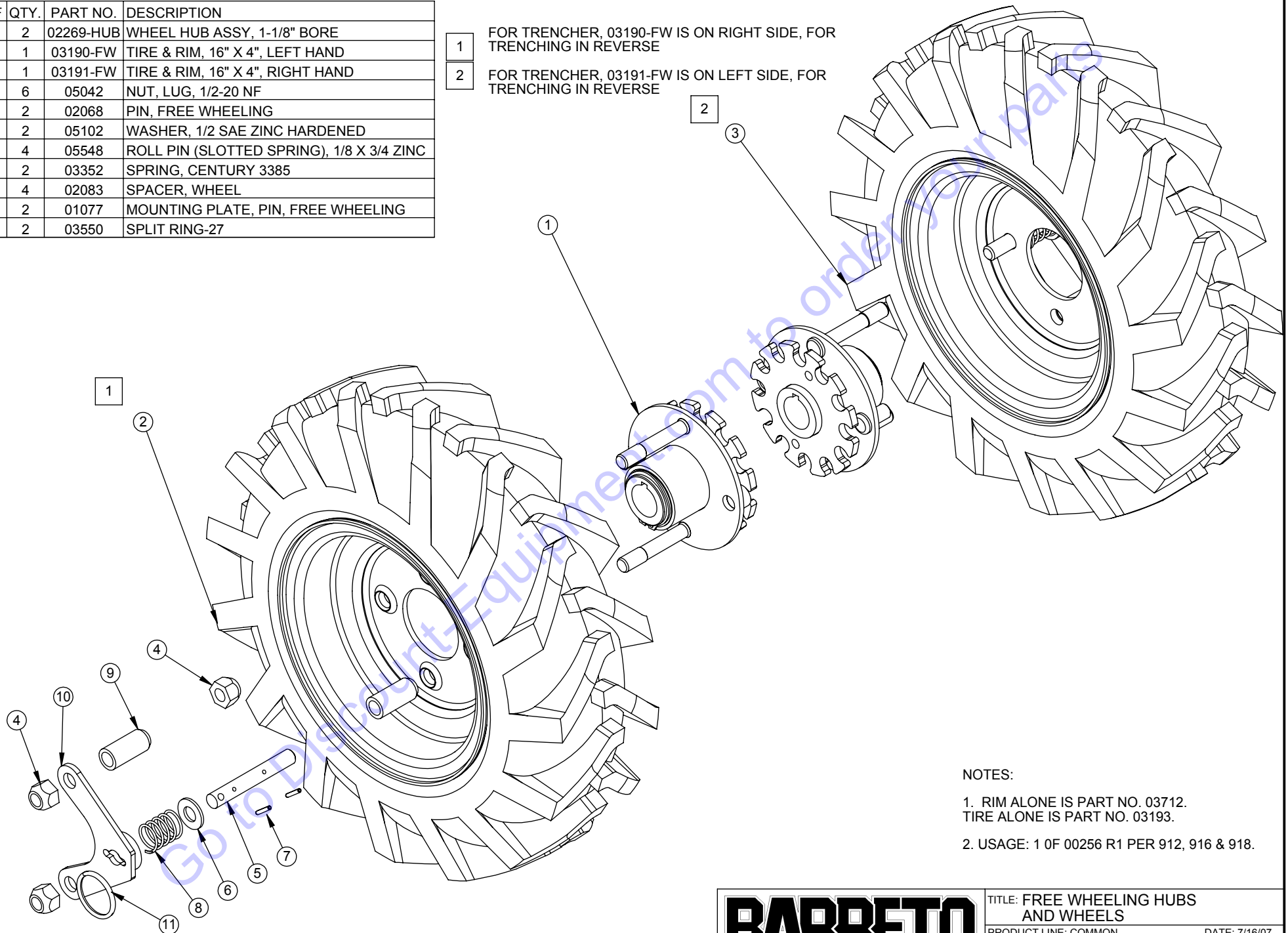
DATE: 3/10/04

SCALE: 1:3
SHEET 1 OF 1

DWG# 00249

REF	QTY.	PART NO.	DESCRIPTION
1	2	02269-HUB	WHEEL HUB ASSY, 1-1/8" BORE
2	1	03190-FW	TIRE & RIM, 16" X 4", LEFT HAND
3	1	03191-FW	TIRE & RIM, 16" X 4", RIGHT HAND
4	6	05042	NUT, LUG, 1/2-20 NF
5	2	02068	PIN, FREE WHEELING
6	2	05102	WASHER, 1/2 SAE ZINC HARDENED
7	4	05548	ROLL PIN (SLOTTED SPRING), 1/8 X 3/4 ZINC
8	2	03352	SPRING, CENTURY 3385
9	4	02083	SPACER, WHEEL
10	2	01077	MOUNTING PLATE, PIN, FREE WHEELING
11	2	03550	SPLIT RING-27

- 1 FOR TRENCHER, 03190-FW IS ON RIGHT SIDE, FOR TRENCHING IN REVERSE
- 2 FOR TRENCHER, 03191-FW IS ON LEFT SIDE, FOR TRENCHING IN REVERSE



NOTES:

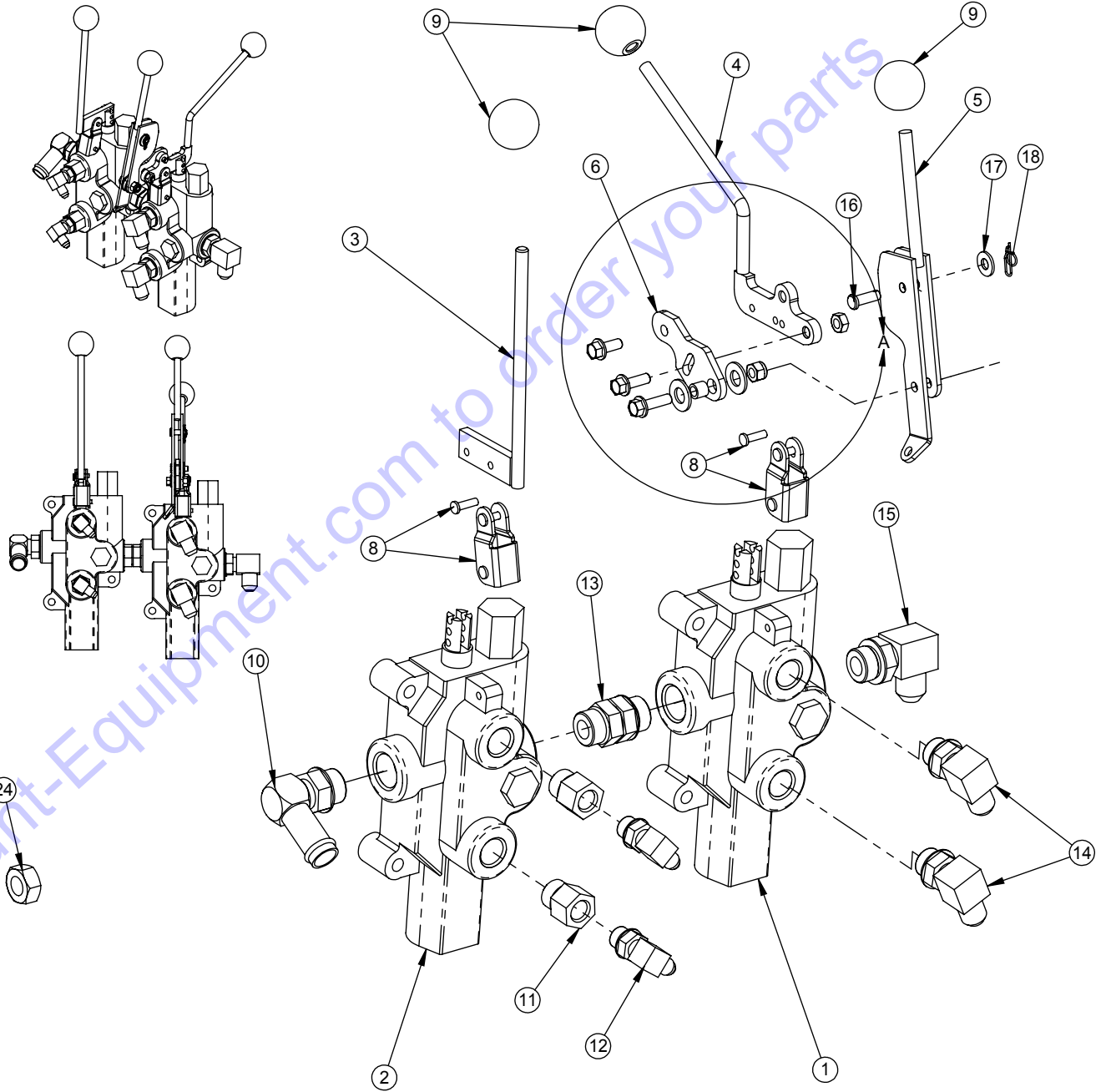
1. RIM ALONE IS PART NO. 03712.
TIRE ALONE IS PART NO. 03193.
2. USAGE: 1 OF 00256 R1 PER 912, 916 & 918.

BARRETO

TITLE: FREE WHEELING HUBS AND WHEELS
 PRODUCT LINE: COMMON DATE: 7/16/07
 SCALE: 1:4 DWG# 00256 R1
 SHEET 1 OF 1

REF	QTY.	PART NO.	DESCRIPTION
1	1	04513-M	VALVE RD-2508-M4, 2200 psi
2	1	04512-M	VALVE RD-2508-T4, 500-650 PSI
3	1	10553	CYLINDER VALVE LEVER
4	1	10330	VALVE LEVER
5	1	10335	VALVE ENGAGE LEVER
6	1	10337	VALVE ROCKER
7	1	11743	SPACER
8	2	03509	BRACKET & PINS, COMES WITH VALVE
9	3	03026	KNOB, 5/16-NC
10	1	04523	FITTING, 4601-12-10
11	2	04529	FITTING, 6410-8-6
12	2	04527-01	FITTING, 6801-4-6
13	1	04521	FITTING, 6407-10-10
14	2	04554	FITTING, 6801-8-8
15	1	04211	FITTING, 6801-8-10
16	1	10345	CLEVIS PIN, 1/4 X 3/4 ZINC
17	1	05081	WASHER, 1/4 SAE ZINC
18	1	05038	RUE RING COTTER #8
19	1	05069	WHIZ-LOCK 1/4 - 20 X 5/8
20	1	05535	WHIZ-LOCK 1/4 - 20 X 7/8
21	1	05049	WHIZ-LOCK 1/4 - 20 X 3/4
22	2	05101	WASHER, 3/8 SAE ZINC
23	1	05096	NUT, NYLOCK, 1/4-20 NC ZINC
24	1	10773	NUT, GRIPCO, 1/4-20 NC G5 ZINC

UPDATED 10/5/16



DETAIL A
SCALE 1 : 2

BARRETO

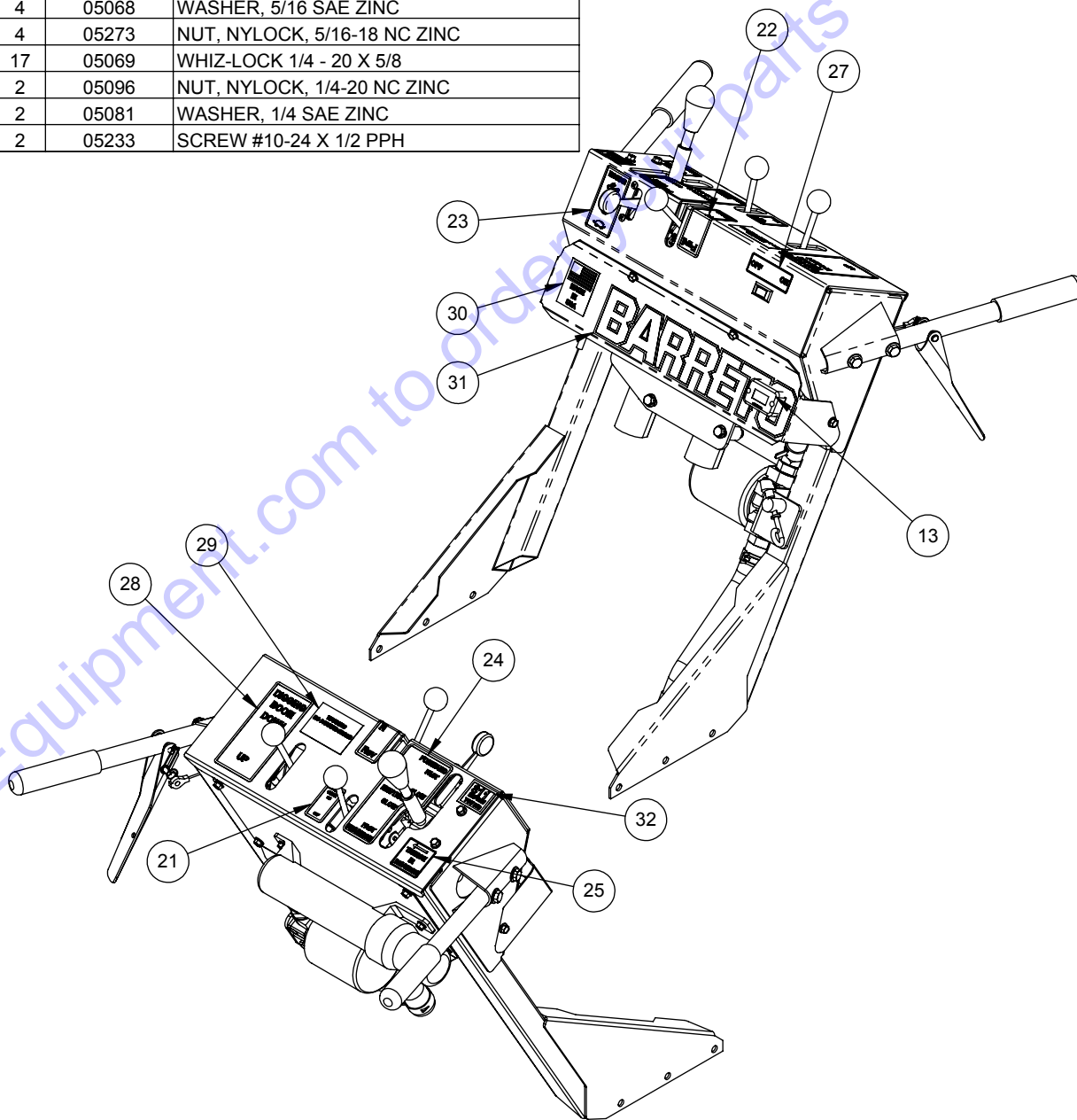
TITLE: CONTROL VALVE ASSEMBLY

PRODUCT LINE: TRENCHER 912 DATE: 8/24/04

SCALE: 1:4
SHEET 1 OF 1

DWG# 00259

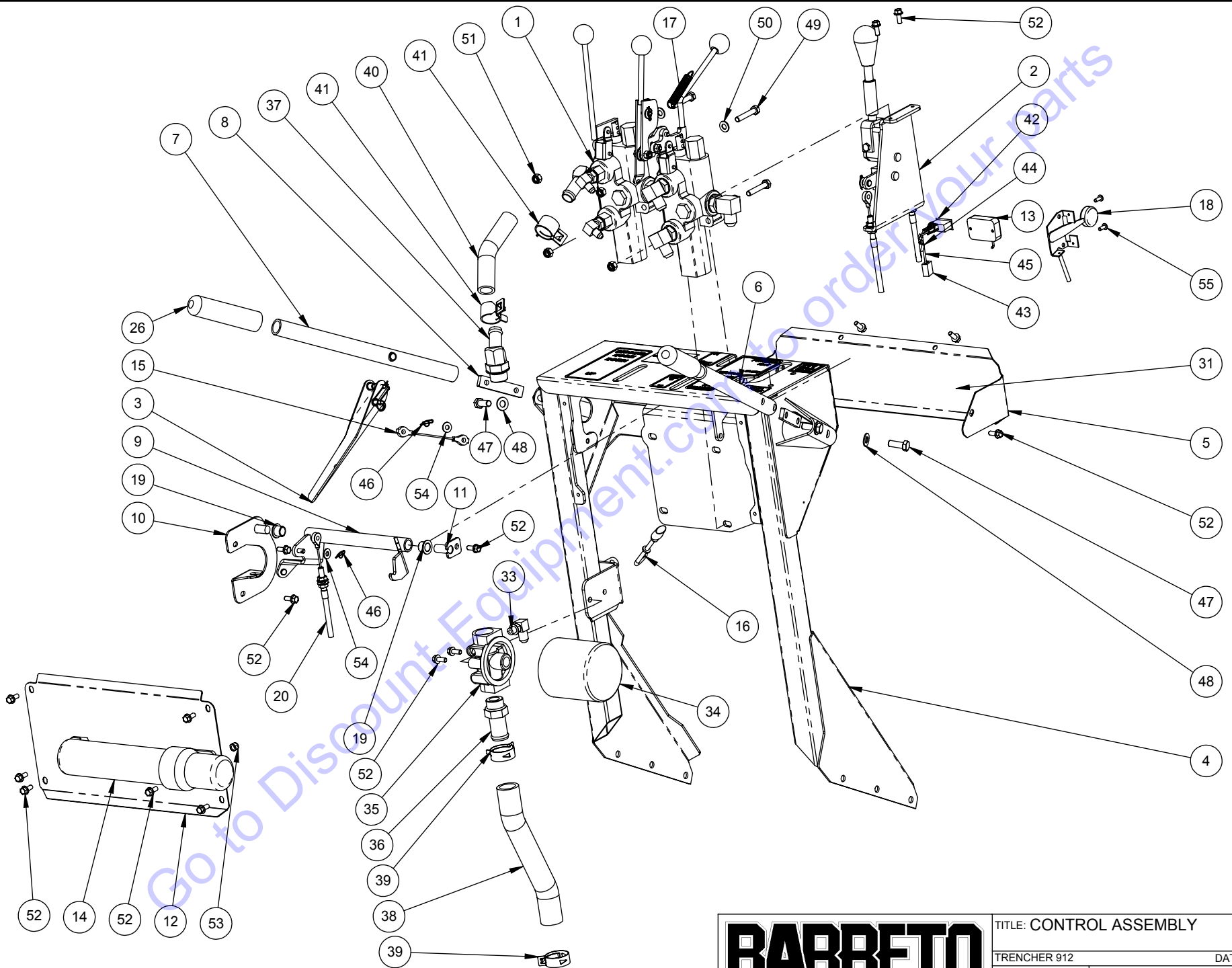
REF	QTY.	PART NO.	DESCRIPTION	REF	QTY.	PART NO.	DESCRIPTION
1	1	00259	CONTROL VALVE ASSEMBLY	49	4	05054	HH CAP SCREW, 5/16-18 NC X 1-3/4 G5 ZINC
2	1	00273	SPEED LEVER ASSEMBLY	50	4	05068	WASHER, 5/16 SAE ZINC
3	1	01503K	CLUTCH LEVER KIT	51	4	05273	NUT, NYLOCK, 5/16-18 NC ZINC
4	1	10327	CONTROL POD	52	17	05069	WHIZ-LOCK 1/4 - 20 X 5/8
5	1	10534	HOSE COVER	53	2	05096	NUT, NYLOCK, 1/4-20 NC ZINC
6	1	01402-R	HANDLE BAR, RH	54	2	05081	WASHER, 1/4 SAE ZINC
7	1	01402-L	HANDLEBAR, LEFT	55	2	05233	SCREW #10-24 X 1/2 PPH
8	2	01403	HANDLE BAR SLUG				
9	1	10331	VALVE LINKAGE				
10	1	10332	LINK PIVOT				
11	1	10346	LINKAGE PIVOT				
12	1	10549	BACK COVER				
13	1	03009-R1	HOUR METER, WITH FLASH ALERT				
14	1	12090	INSTRUCTION CANISTER				
15	1	03505	CABLE, 4-1/2"				
16	1	06423	STARTER GROMMET				
17	1	10548	SPRING LEE LE-055E-6MW				
18	1	03515-T	THROTTLE CABLE				
19	2	03501	BUSHING, IGUS MFI-0810-08				
20	1	03514	CABLE, 40"				
21	1	04440-04	DECAL, DIG CHAIN ON/OFF				
22	1	04430-05	DECAL, DIG CHAIN FWD-N-REV				
23	1	04440-05	DECAL, THROTTLE CONTROL				
24	1	04440-06	DECAL, "TRAVEL F-N-R"				
25	1	04440-07	DECAL, "REV/TRENCH SYMBOL"				
26	2	03032	HANDLE BAR GRIPS (SOLD IN PAIRS)				
27	1	03341-07	DECAL, "IGNITION OFF/ON"				
28	1	03341-12	DECAL, "DIGGING BOOM, UP-DOWN"				
29	1	03341-24	DECAL, "WARNING - NO PARKING BRAKE"				
30	1	03040-01	DECAL, "MADE IN USA"				
31	1	03040-02	DECAL, "BARRETO", 3-1/2 X 11-1/4				
32	1	03345	DECAL, "CALL 811 BEFORE YOU DIG"				
33	1	04526-01	FITTING, 6801-6-4				
34	1	03951	FILTER, HYDRAULIC OIL, WITH BY-PASS				
35	1	04212-OR-U	FILTER HEAD, #12 O-RING, TAP RIGHT				
36	1	04217	FITTING, 4604-16-12				
37	1	10362	FITTING, 4603-12-12				
38	1	10367	HOSE, RETURN, 04298				
39	2	05225	CLAMP, 1" ID HOSE, CTB-35 ST				
40	1	10368	RETURN HOSE, 04294				
41	2	05008	CLAMP, 1" HOSE, CTB-29				
42	1	06420	ROCKER SWITCH, IGNITION OFF/ON				
43	1	03806	QUICK-SPLICE				
44	1	06421	GROUND WIRE, IGNITION SWITCH				
45	1	10603	IGNITION WIRE, 912				
46	2	05038	RUE RING COTTER #8				
47	4	05059	HH CAP SCREW, 3/8-16 NC X 1 G5 ZINC				
48	4	05101	WASHER, 3/8 SAE ZINC				



BARRETO

TITLE: CONTROL ASSEMBLY

PRODUCT LINE: TRENCHER 912 DATE: 3/19/04
 SCALE: 1:9 SHEET 1 OF 2 DWG# 00260



BARRETO

TITLE: CONTROL ASSEMBLY

TRENCHER 912

DATE: 3/19/04

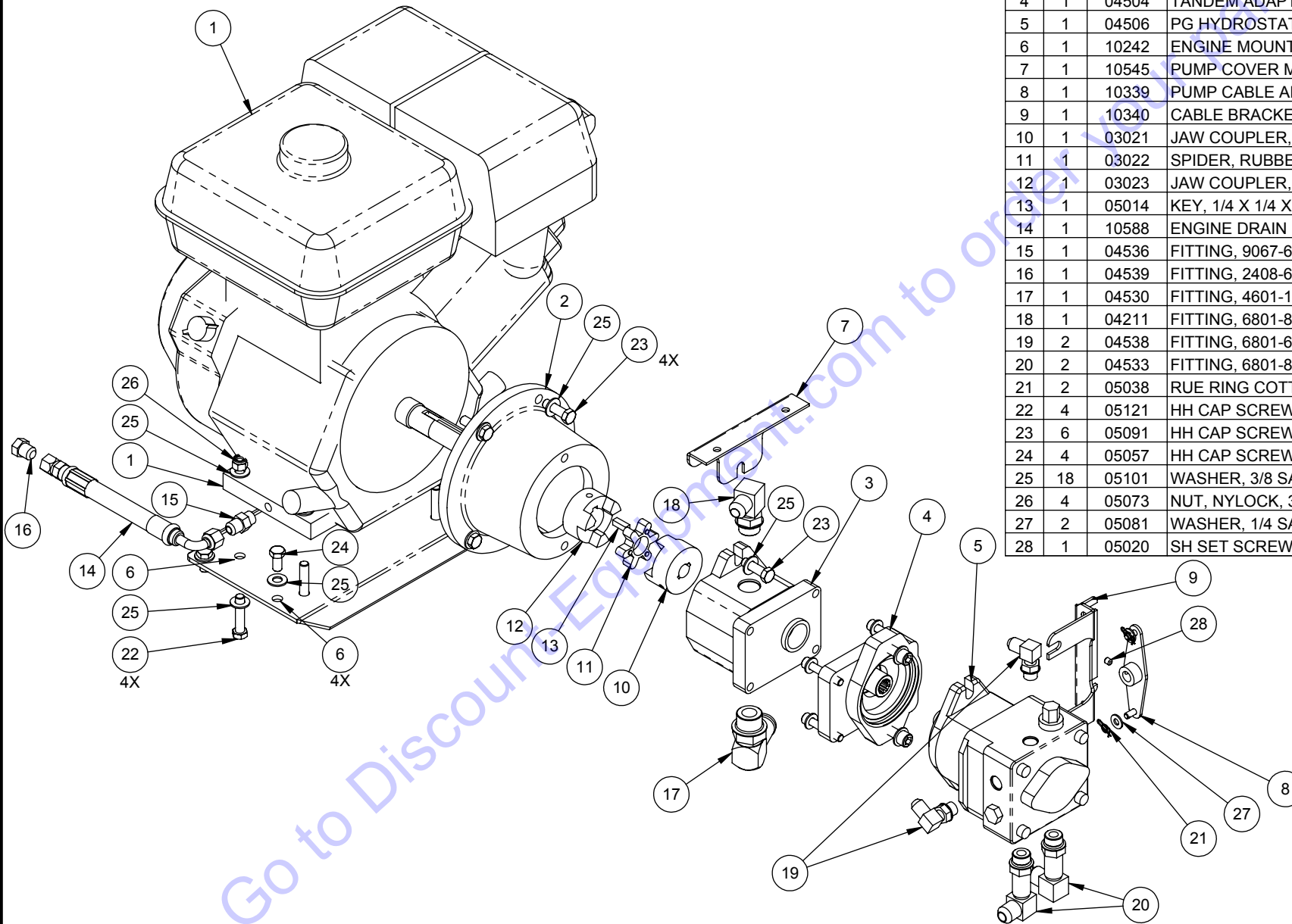
SCALE: 1:8
SHEET 2 OF 2

DWG# 00260

UPDATED: 10/4/16

ENGINE OPTIONS:
07006: HONDA GX270
07009: 9HP ROBIN SUBARU

NOTES:
04504 TANDEMA ADAPT KIT INCLUDES
PLATE, COUPLER, O-RINGS, BOLTS, WASHERS
03021 & 03023 COUPLERS INCLUDE SET SCREW



REF	QTY.	PART NO.	DESCRIPTION
1	1	07006	ENGINE, 9 HP HONDA GX270
2	1	02016	PUMP ADAPTER
3	1	04507	PUMP SNP2-8.5-HSTAT
4	1	04504	TANDEMA ADAPT KIT
5	1	04506	PG HYDROSTAT PUMP .63 CI
6	1	10242	ENGINE MOUNT PLATE
7	1	10545	PUMP COVER MOUNT
8	1	10339	PUMP CABLE ARM
9	1	10340	CABLE BRACKET
10	1	03021	JAW COUPLER, PUMP, 5/8" BORE
11	1	03022	SPIDER, RUBBER
12	1	03023	JAW COUPLER, 1" BORE L095
13	1	05014	KEY, 1/4 X 1/4 X 3/4
14	1	10588	ENGINE DRAIN HOSE
15	1	04536	FITTING, 9067-6-12METRIC
16	1	04539	FITTING, 2408-6
17	1	04530	FITTING, 4601-16-12
18	1	04211	FITTING, 6801-8-10
19	2	04538	FITTING, 6801-6-6
20	2	04533	FITTING, 6801-8-8-LL
21	2	05038	RUE RING COTTER #8
22	4	05121	HH CAP SCREW, 3/8-16 NC X 1-3/4 G5 ZINC
23	6	05091	HH CAP SCREW, 3/8-16 NC X 1-1/4 G5 ZINC
24	4	05057	HH CAP SCREW, 3/8-16 NC X 3/4 G5 ZINC
25	18	05101	WASHER, 3/8 SAE ZINC
26	4	05073	NUT, NYLOCK, 3/8-16 NC ZINC
27	2	05081	WASHER, 1/4 SAE ZINC
28	1	05020	SH SET SCREW, 1/4-20 NC X 1/4" CUP POINT

BARRETO

TITLE: ENGINE & PUMPS ASSEMBLY

PRODUCT LINE: TRENCHER 912

DATE: 3/17/04

SCALE: 1:6

SHEET 1 OF 1

DWG# 00261

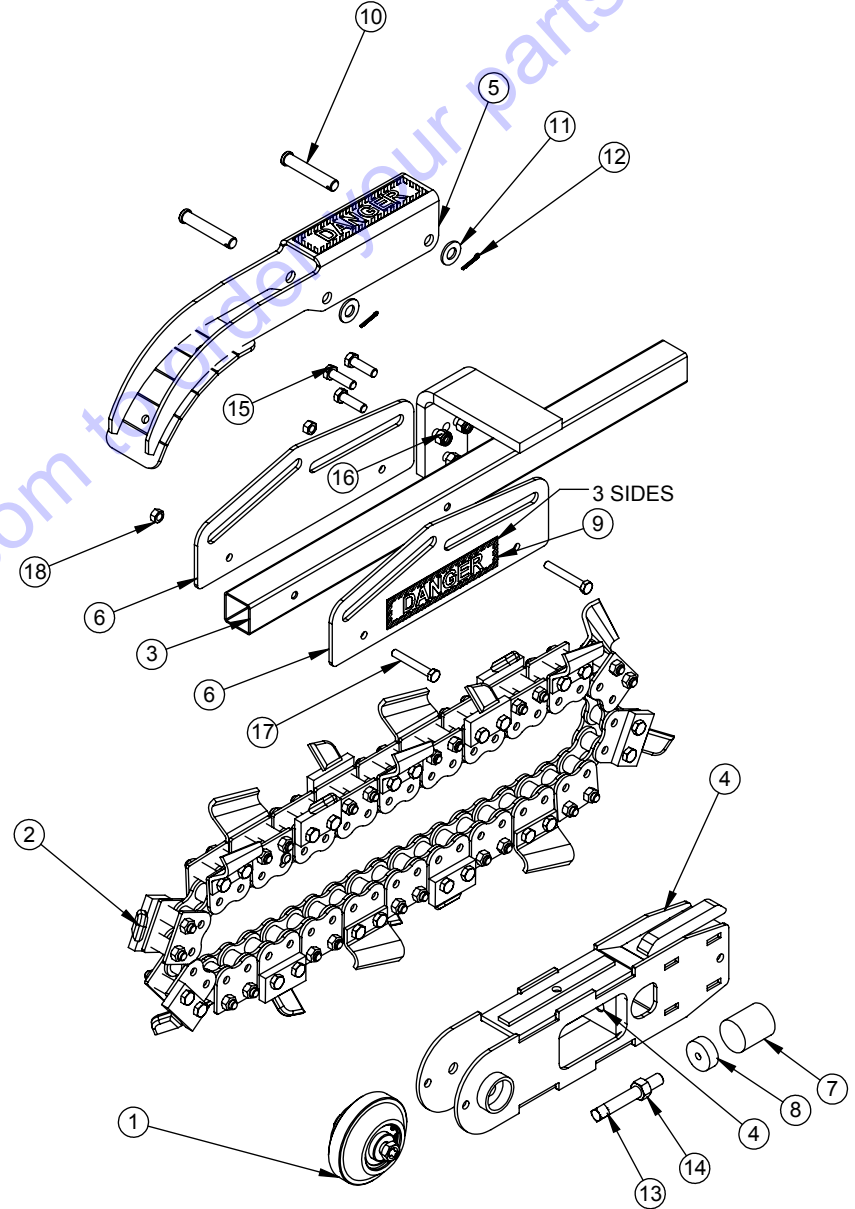
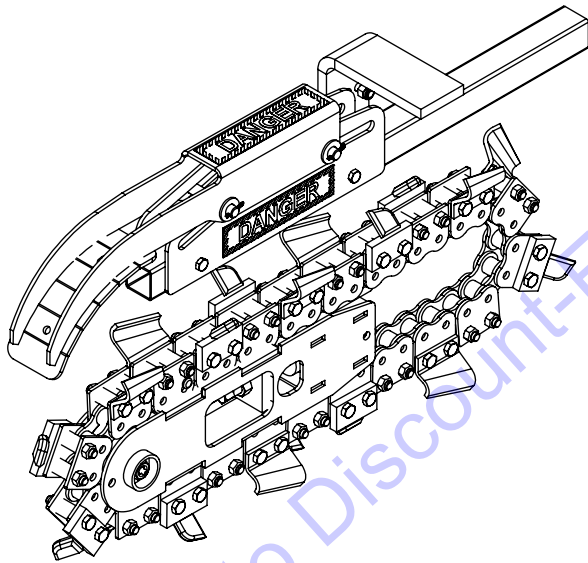
ITEM NO.	QTY.	PART NO.	DESCRIPTION
1	1	00265	ROLLER ASSEMBLY
2	1	DIG CHAIN	CHAIN OPTIONS
3	1	10325	BOOM GUARD 12"
4	1	10316	BOOM - 12"
5	1	10567	CRUMBER ARM
6	2	10564	CRUMBER MOUNT
7	1	10270	CUSHION, BOOM
8	1	10318	BOOM CUSHION WASHER
9	3	04440-02	DECAL; DANGER, BOOM GUARD
10	2	10586	CLEVIS PIN, 1/2 X 2-3/4 ZINC
11	2	05102	WASHER, 1/2 SAE ZINC HARDENED
12	2	05222	COTTER PIN 1/8 X 3/4
13	1	10319	CHAIN TENSION SCREW
14	1	10326	NUT, 1/2-13 NC G5 ZINC
15	3	05091	HH CAP SCREW, 3/8-16 NC X 1-1/4 G5 ZINC
16	3	05073	NUT, NYLOCK, 3/8-16 NC ZINC
17	2	05089	HH CAP SCREW, 5/16-24 NF X 2-1/4 G5 ZINC
18	2	10462	NUT, GRIPCO, 5/16-24 NF G5 ZINC

FOR OUR MOST POPULAR CHAIN OPTIONS SEE THE LAST PAGE OF THIS MANUAL

RELEASE DATE	10/6/16
REVISED DATE	NEW
REVISION #	0

DIG DEPTH:
 12" BOOM GUARD 10325
 18" BOOM GUARD 10650
 24" BOOM GUARD 10866

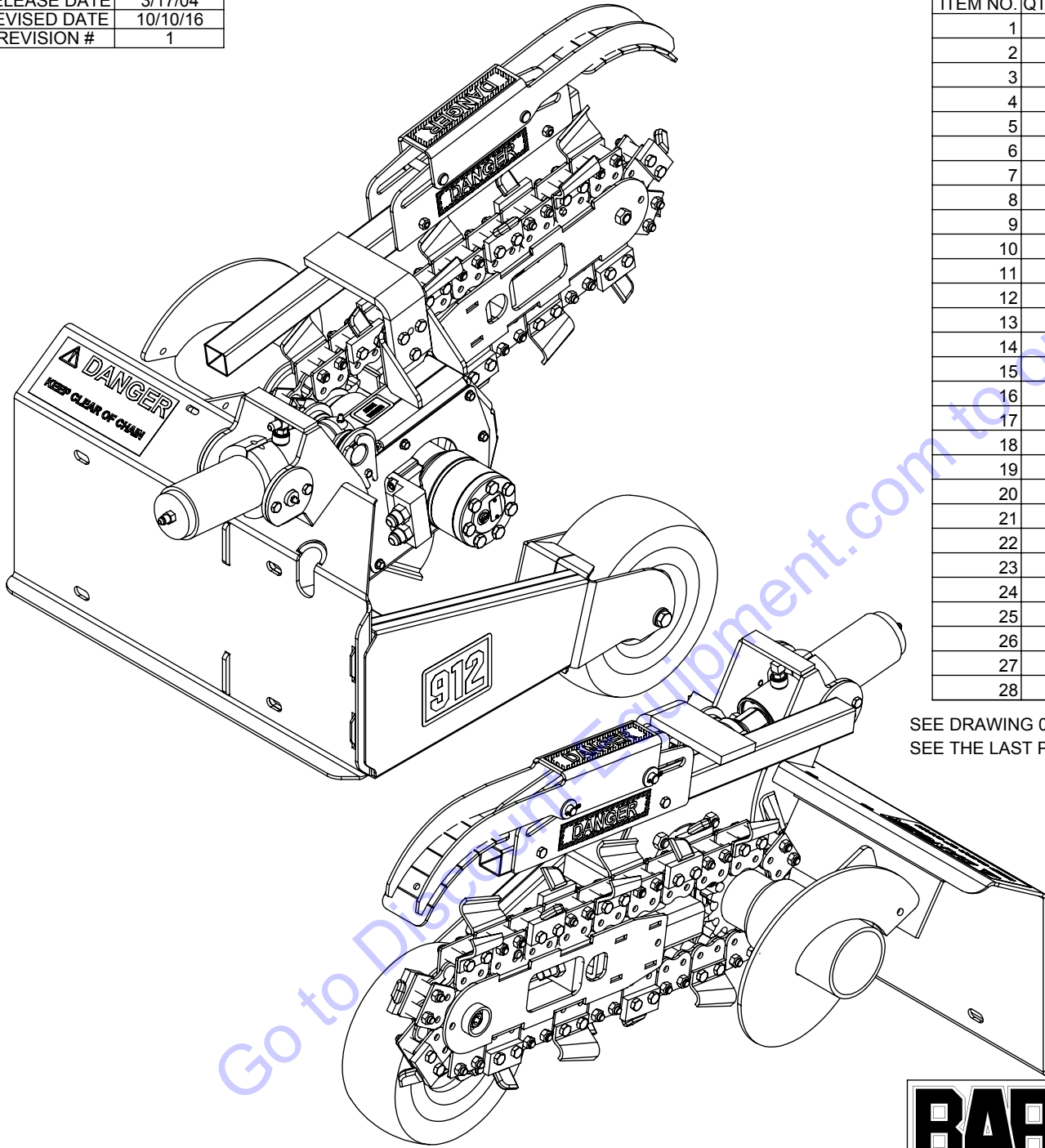
12" BOOM 10316
 18" BOOM 10649
 24" BOOM 10865



BARRETO

TITLE: BOOM GUARD & CRUMBER
 PRODUCT LINE: 912
 SCALE: 1:8
 SHEET 1 OF 1
 DWG# 00262-BOOM

RELEASE DATE	3/17/04
REVISED DATE	10/10/16
REVISION #	1



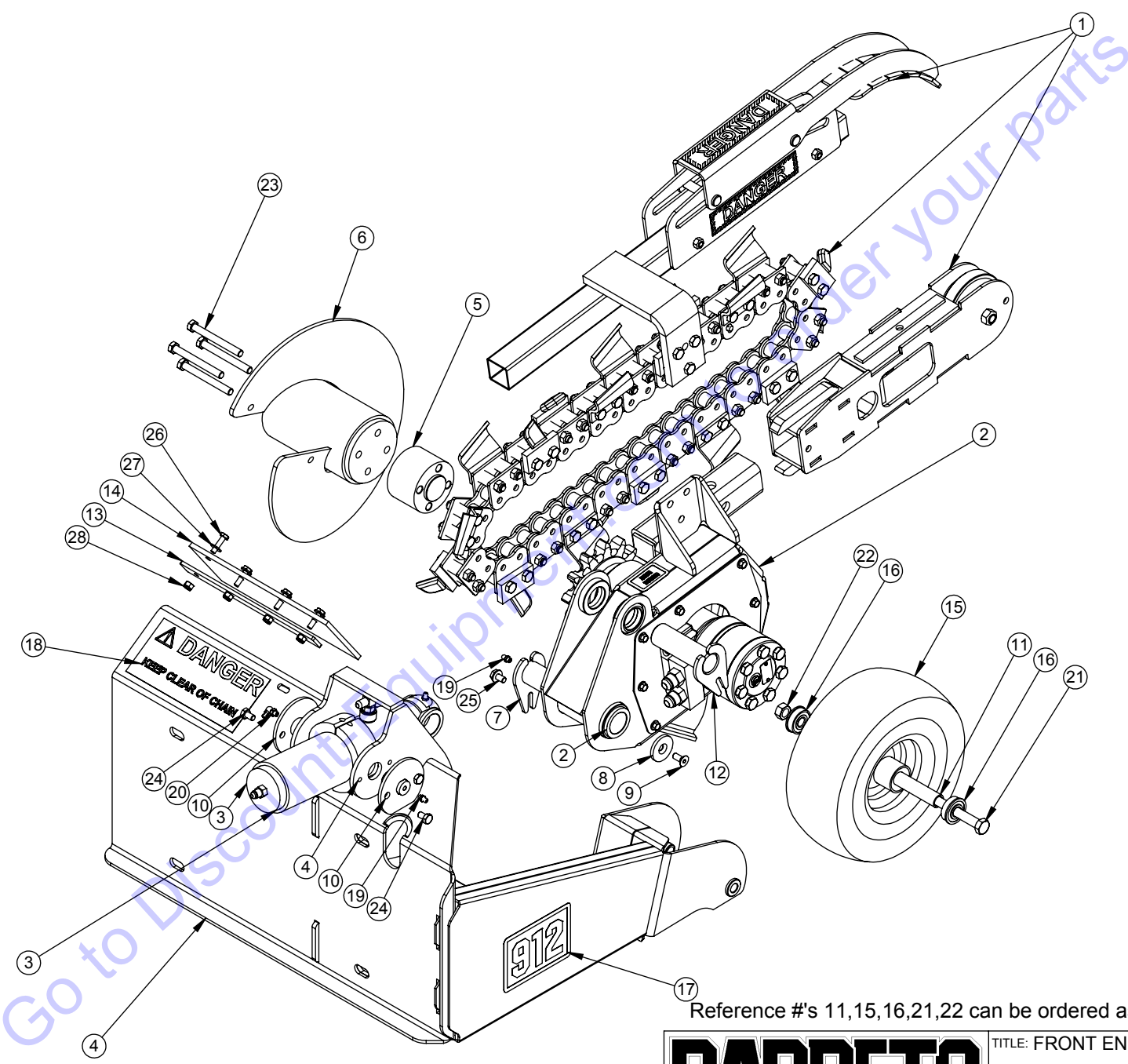
ITEM NO.	QTY.	PART NO.	DESCRIPTION
1	1	00262-BOOM	BOOM GUARD & CRUMBER
2	1	00264	MOTOR HOUSING ASSEMBLY
3	1	00271	CYLINDER ASSEMBLY
4	1	10273	FRONT END MOUNT
5	1	10286-W	AUGER SPACER, WIDE
6	1	10287	AUGER
7	1	10280	PIVOT PIN
8	1	10626	PIVOT PIN WASHER
9	1	10627	C-SINK HD CAP SCR .31 X .75 NC Z
10	2	10281	CYLINDER PIN
11	1	10458	SPACER, FRONT AXLE
12	1	10546	CYLINDER ROD PIN
13	1	11962	FLAP CLAMP
14	1	03903	FLAP
15	1	10347	TIRE & RIM 4.10/3.50-4
16	2	10347.50	BEARING, 1/2 BORE
17	1	04440-03	DECAL; 912
18	1	03341-05	DECAL; DANGER, CHAIN
19	2	05044	GREASE ZERK, 1/4-28 UNF
20	1	05307	GREASE ZERK, 1/4-28 UNF 90°
21	1	05301	HH CAP SCREW, 1/2-13 NC X 6 G5 ZINC
22	1	05046	NUT, GRIPCO, 1/2-13 NC G5 ZINC
23	4	10740	HH CAP SCREW, 3/8-24 NF X 3-1/2 G5 ZINC
24	4	05304	HH CAP SCREW, 5/16-18 NC X 1/2 G5 ZINC
25	1	05169	WHIZ-LOCK 5/16 - 18 X 1/2
26	4	05237	HH CAP SCREW, 1/4-20 NC X 1 G5 ZINC
27	4	05081	WASHER, 1/4 SAE ZINC
28	4	05096	NUT, NYLOCK, 1/4-20 NC ZINC

SEE DRAWING 00262-BOOM FOR BOOM & BOOM GUARD OPTIONS
 SEE THE LAST PAGE OF THIS MANUAL FOR OUR MOST POPULAR CHAIN OPTIONS

BARRETO

TITLE: FRONT END
 PRODUCT LINE: 912 TRENCHER
 SCALE: 1:8
 SHEET 1 OF 2

DWG# 00262



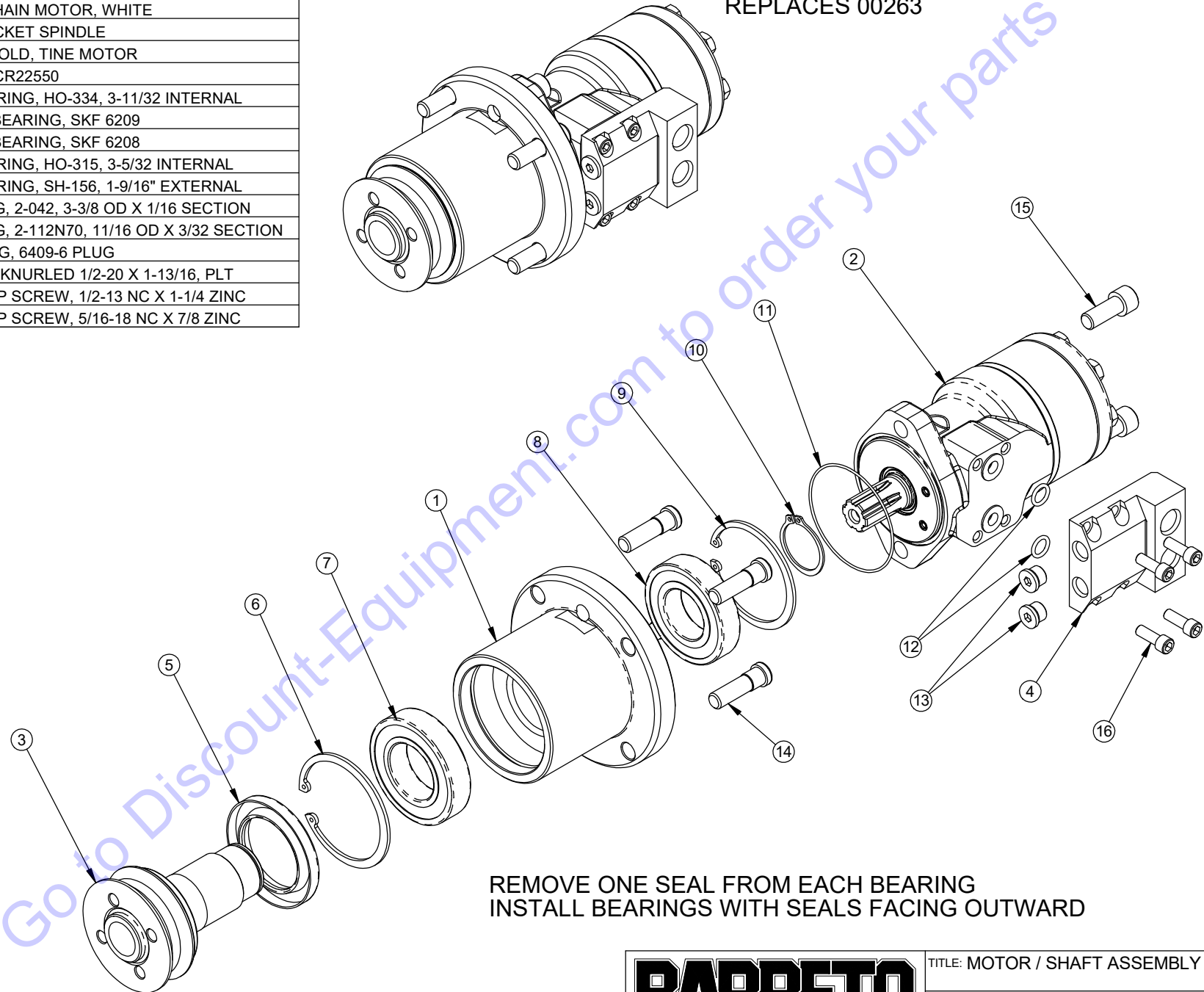
Reference #'s 11,15,16,21,22 can be ordered as a kit, part# 10347-K

BARRETO	TITLE: FRONT END	
	PRODUCT LINE: 912 TRENCHER	
	SCALE: 1:8	DWG# 00262
	SHEET 2 OF 2	

REF	QTY.	PART NO.	DESCRIPTION
1	1	10254	HOUSING TUBE
2	1	10450-W	DIG CHAIN MOTOR, WHITE
3	1	10252	SPROCKET SPINDLE
4	1	02065	MANIFOLD, TINE MOTOR
5	1	10285	SEAL CR22550
6	1	10284	SNAP RING, HO-334, 3-11/32 INTERNAL
7	1	10253	BALL BEARING, SKF 6209
8	1	03943	BALL BEARING, SKF 6208
9	1	05603	SNAP RING, HO-315, 3-5/32 INTERNAL
10	1	05607	SNAP RING, SH-156, 1-9/16" EXTERNAL
11	1	10689	O-RING, 2-042, 3-3/8 OD X 1/16 SECTION
12	2	03226	O-RING, 2-112N70, 11/16 OD X 3/32 SECTION
13	2	03302	FITTING, 6409-6 PLUG
14	4	05167	STUD, KNURLED 1/2-20 X 1-13/16, PLT
15	2	05585	SH CAP SCREW, 1/2-13 NC X 1-1/4 ZINC
16	4	05361	SH CAP SCREW, 5/16-18 NC X 7/8 ZINC

UPDATED 10/10/16

WHITE MOTOR STARTED WITH M2292, 9/24/14
REPLACES 00263



REMOVE ONE SEAL FROM EACH BEARING
INSTALL BEARINGS WITH SEALS FACING OUTWARD

BARRETO

TITLE: MOTOR / SHAFT ASSEMBLY

PRODUCT LINE: TRENCHER 912

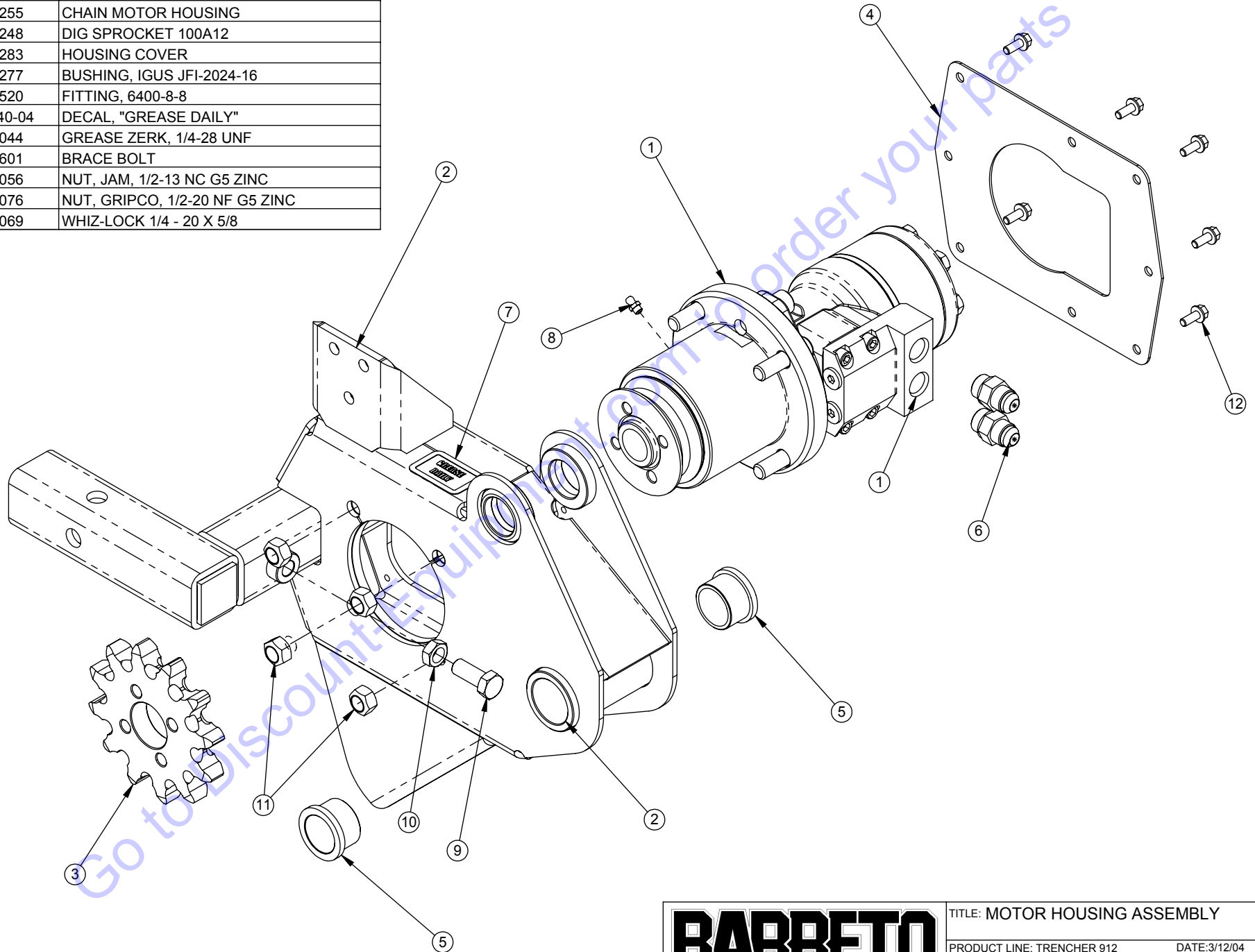
DATE: 3/12/04

SCALE: 1:4

SHEET 1 OF 1

DWG# 00263-W

REF	QTY.	PART NO.	DESCRIPTION
1	1	00263-W	MOTOR/SHAFT ASSEMBLY
2	1	10255	CHAIN MOTOR HOUSING
3	1	10248	DIG SPROCKET 100A12
4	1	10283	HOUSING COVER
5	2	10277	BUSHING, IGUS JFI-2024-16
6	2	04520	FITTING, 6400-8-8
7	1	03040-04	DECAL, "GREASE DAILY"
8	1	05044	GREASE ZERK, 1/4-28 UNF
9	1	10601	BRACE BOLT /
10	1	11056	NUT, JAM, 1/2-13 NC G5 ZINC
11	4	05076	NUT, GRIPCO, 1/2-20 NF G5 ZINC
12	8	05069	WHIZ-LOCK 1/4 - 20 X 5/8



BARRETO

TITLE: MOTOR HOUSING ASSEMBLY

PRODUCT LINE: TRENCHER 912 DATE: 3/12/04

SCALE: 1:4
SHEET 1 OF 1

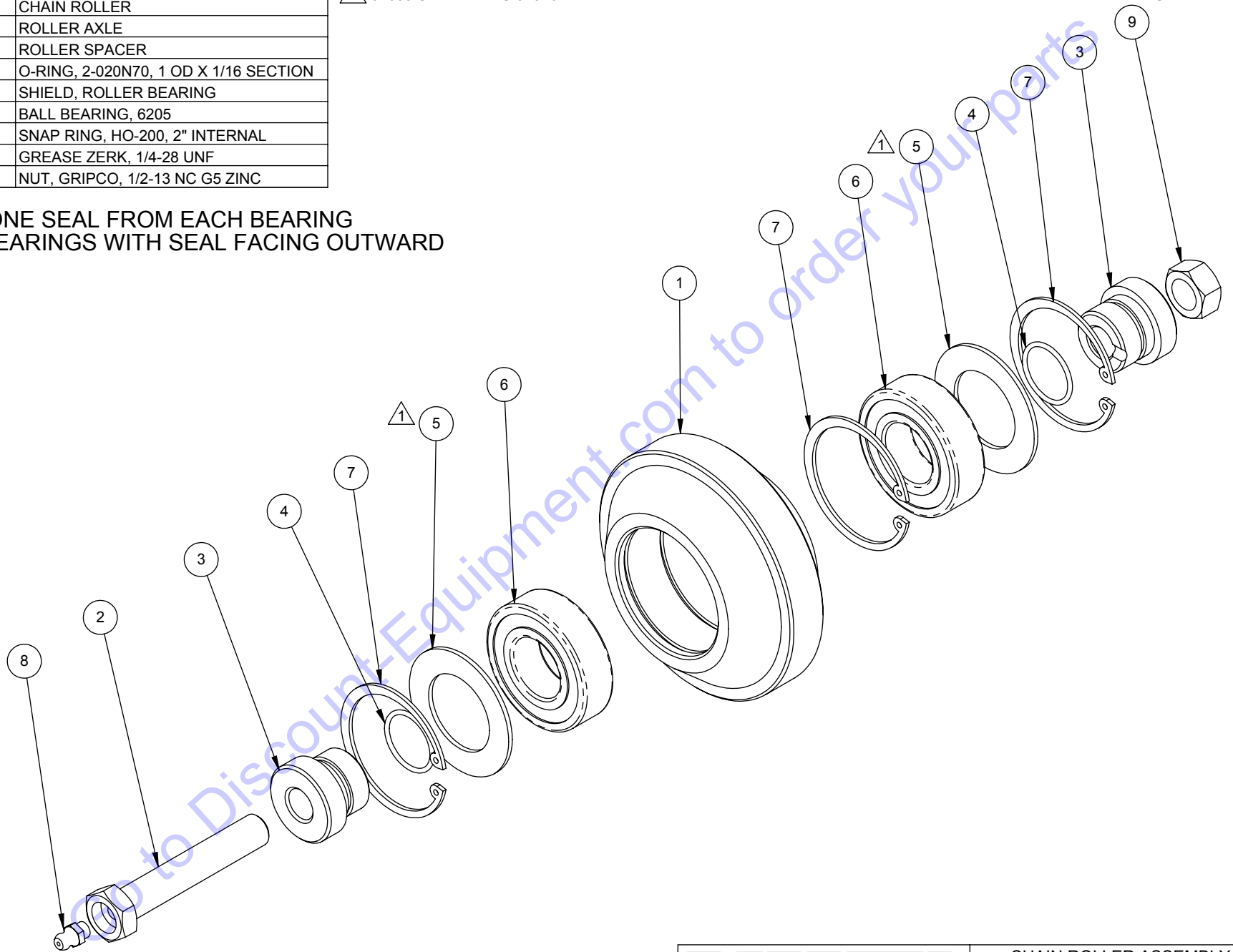
DWG# 00264-W

REF	QTY.	PART NO.	DESCRIPTION
1	1	10311	CHAIN ROLLER
2	1	10320	ROLLER AXLE
3	2	10312	ROLLER SPACER
4	2	10887	O-RING, 2-020N70, 1 OD X 1/16 SECTION
5	2	01039	SHIELD, ROLLER BEARING
6	2	03043	BALL BEARING, 6205
7	3	05024	SNAP RING, HO-200, 2" INTERNAL
8	1	05044	GREASE ZERK, 1/4-28 UNF
9	1	05046	NUT, GRIPCO, 1/2-13 NC G5 ZINC

 01039 SHIELD WAS 01026

UPDATED 10/10/16

REMOVE ONE SEAL FROM EACH BEARING
INSTALL BEARINGS WITH SEAL FACING OUTWARD



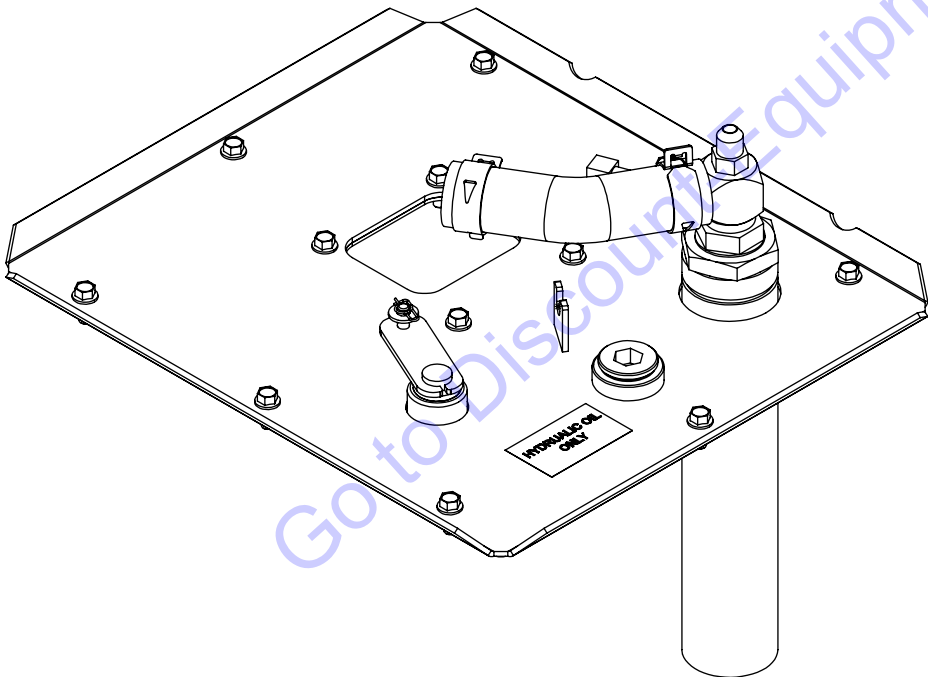
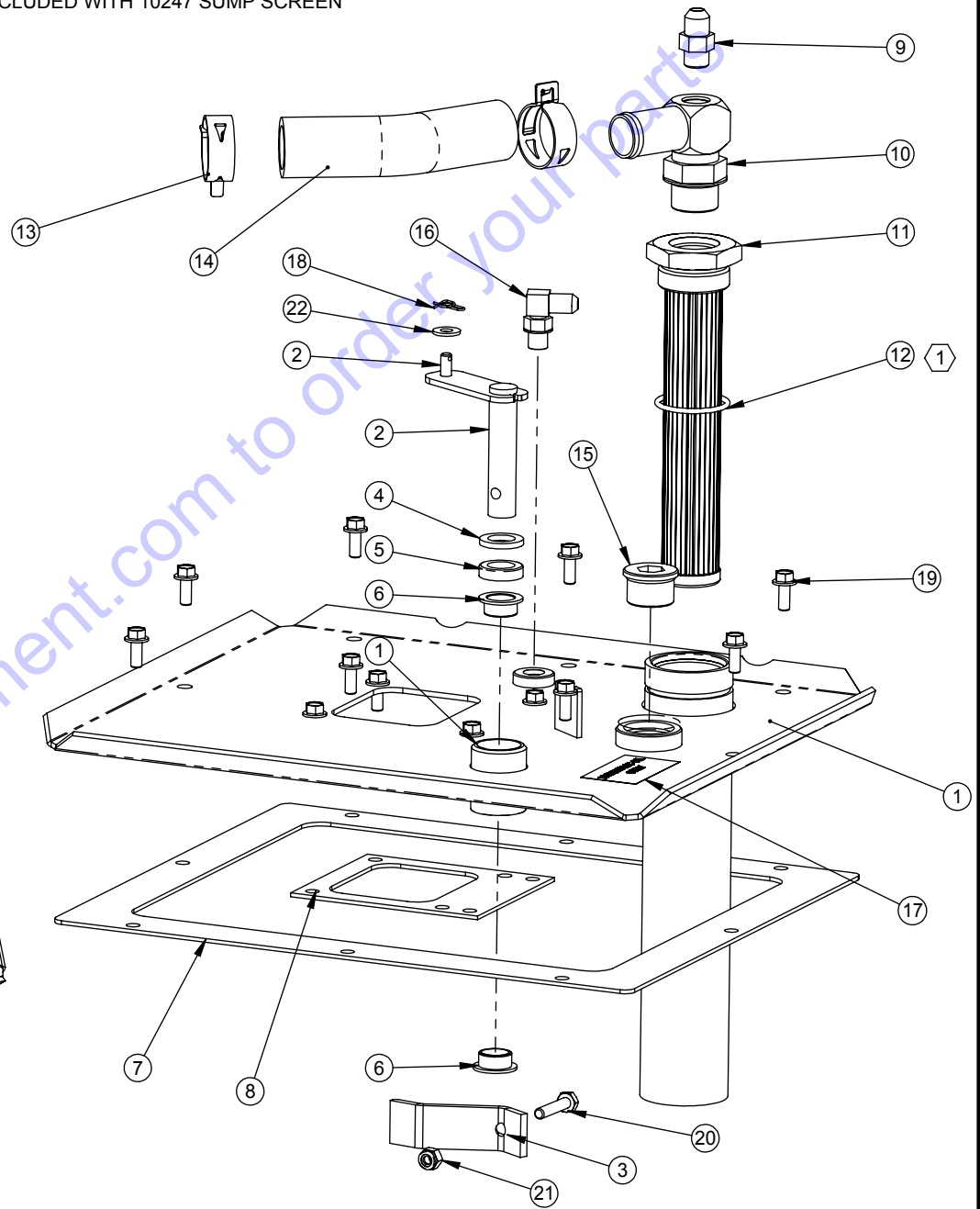
BARRETO

TITLE: CHAIN ROLLER ASSEMBLY	
PRODUCT LINE: TRENCHER 912	DATE: 3/11/04
SCALE: 1:2	DWG# 00265
SHEET 1 OF 1	

REF	QTY.	PART NO.	DESCRIPTION
1	1	10243	LID
2	1	10244	DUMP VALVE ARM
3	1	01211	DUMP VALVE LEVER
4	1	03061	FELT WASHER, 5/8 X 1 X 1/8
5	1	03020	SEAL
6	2	03060	BUSHING, IGUS MFI-1012-06
7	1	03241	LID GASKET
8	1	03242	MANIFOLD GASKET
9	1	10401	FITTING, 6400-6-6
10	1	10364	FITTING, 4601-16-12
11	1	10247	SUMP SCREEN #20 EXT #12 INT O-RING
12	1	03293	O-RING, 3-920N90, -20 FITTINGS
13	2	05225	CLAMP, 1" ID HOSE, CTB-35 ST
14	1	10366	SUCTION HOSE
15	1	10526	FITTING, 6409-12 PLUG
16	1	04555	FITTING, 6801-4-4
17	1	03040-06	DECAL, "HYDRAULIC OIL ONLY"
18	1	05038	RUE RING COTTER #8
19	12	05069	WHIZ-LOCK 1/4 - 20 X 5/8
20	1	05125	HH CAP SCREW, 1/4-20 NC X 1-1/4 G5 ZINC
21	1	05096	NUT, NYLOCK, 1/4-20 NC ZINC
22	1	05081	WASHER, 1/4 SAE ZINC

① 03293 O-RING IS INCLUDED WITH 10247 SUMP SCREEN

①



BARRETO

TITLE: LID ASSEMBLY

PRODUCT LINE: TRENCHER 912

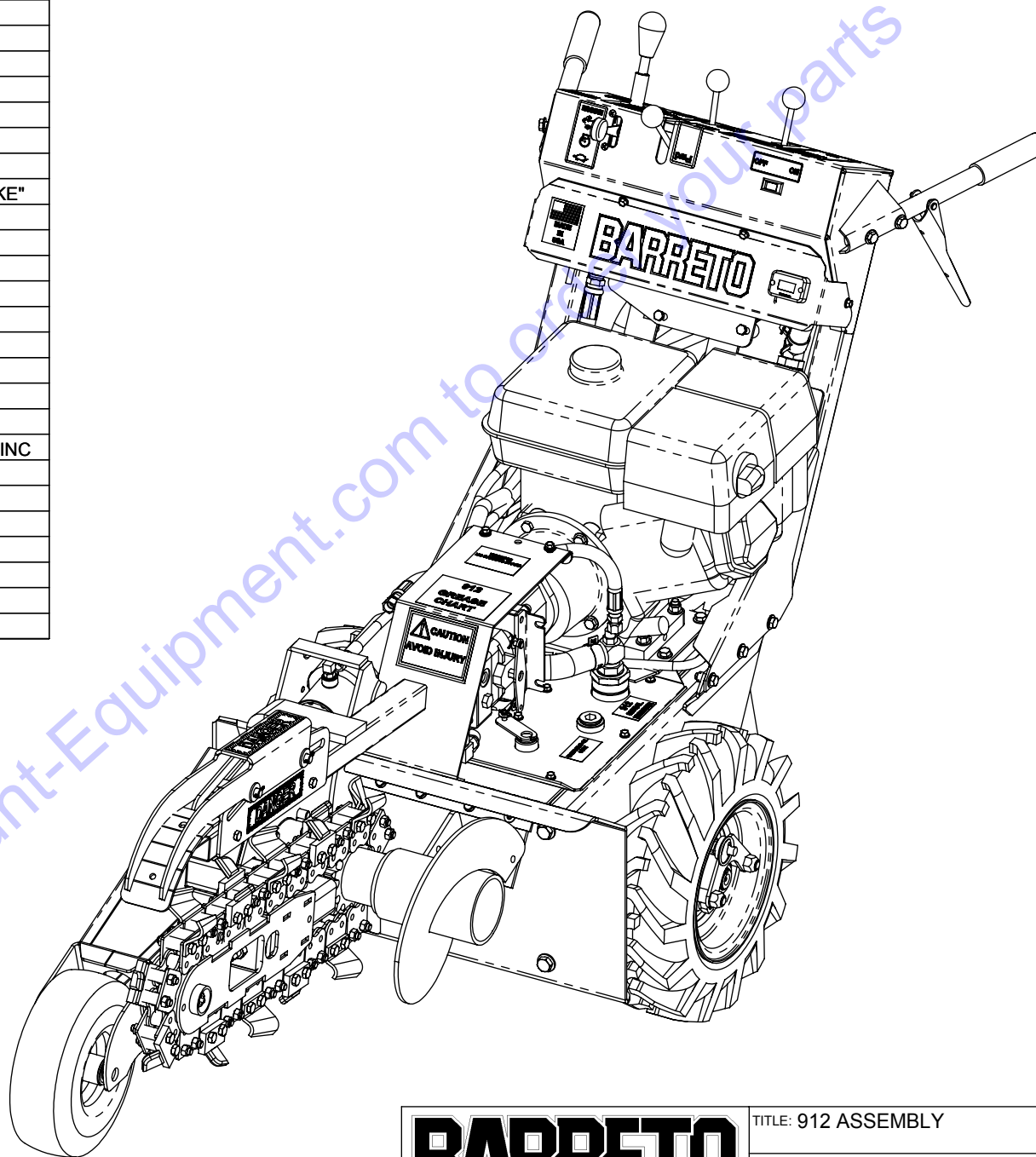
DATE: 3/11/04

SCALE: 1:4

SHEET 1 OF 1

DWG# 00267

TEM NO.	QTY.	PART NO.	DESCRIPTION
1	1	00247	BODY ASSEMBLY
2	1	00260	CONTROL ASSEMBLY
3	1	00261	ENGINE & PUMP ASSEMBLY
4	1	00262	FRONT END
5	1	10365	VENT HOSE ASSEMBLY
6	1	10544	PUMP COVER
7	1	03341-04	DECAL, "CAUTION - TO AVOID INJURY"
8	1	04440-09	DECAL, GREASE CHART
9	1	03341-24	DECAL, "WARNING - NO PARKING BRAKE"
10	1	10369	HOSE, PUMP OUTPUT
11	1	10372	HOSE, HYDROSTAT, RIGHT
12	1	10373	HOSE, HYDROSTAT, LEFT
13	1	10412	HOSE, CHAIN MOTOR, TOP
14	1	10413	HOSE, CHAIN MOTOR, BOTTOM
15	1	10414	HOSE, HYDROSTAT SUCTION
16	1	10415	HOSE, HYDROSTAT RETURN
17	1	10550	CYLINDER HOSE, TOP / PISTON
18	1	10551	CYLINDER HOSE, BOTTOM / ROD
19	4	05323	HH CAP SCREW, 1/2-13 NC X 1-1/4 G5 ZINC
20	4	05102	WASHER, 1/2 SAE ZINC HARDENED
21	6	05059	HH CAP SCREW, 3/8-16 NC X 1 G5 ZINC
22	6	05101	WASHER, 3/8 SAE ZINC
23	6	05073	NUT, NYLOCK, 3/8-16 NC ZINC
24	4	05049	WHIZ-LOCK 1/4 - 20 X 3/4
25	8	05081	WASHER, 1/4 SAE ZINC
26	4	05096	NUT, NYLOCK, 1/4-20 NC ZINC



BARRETO

TITLE: 912 ASSEMBLY

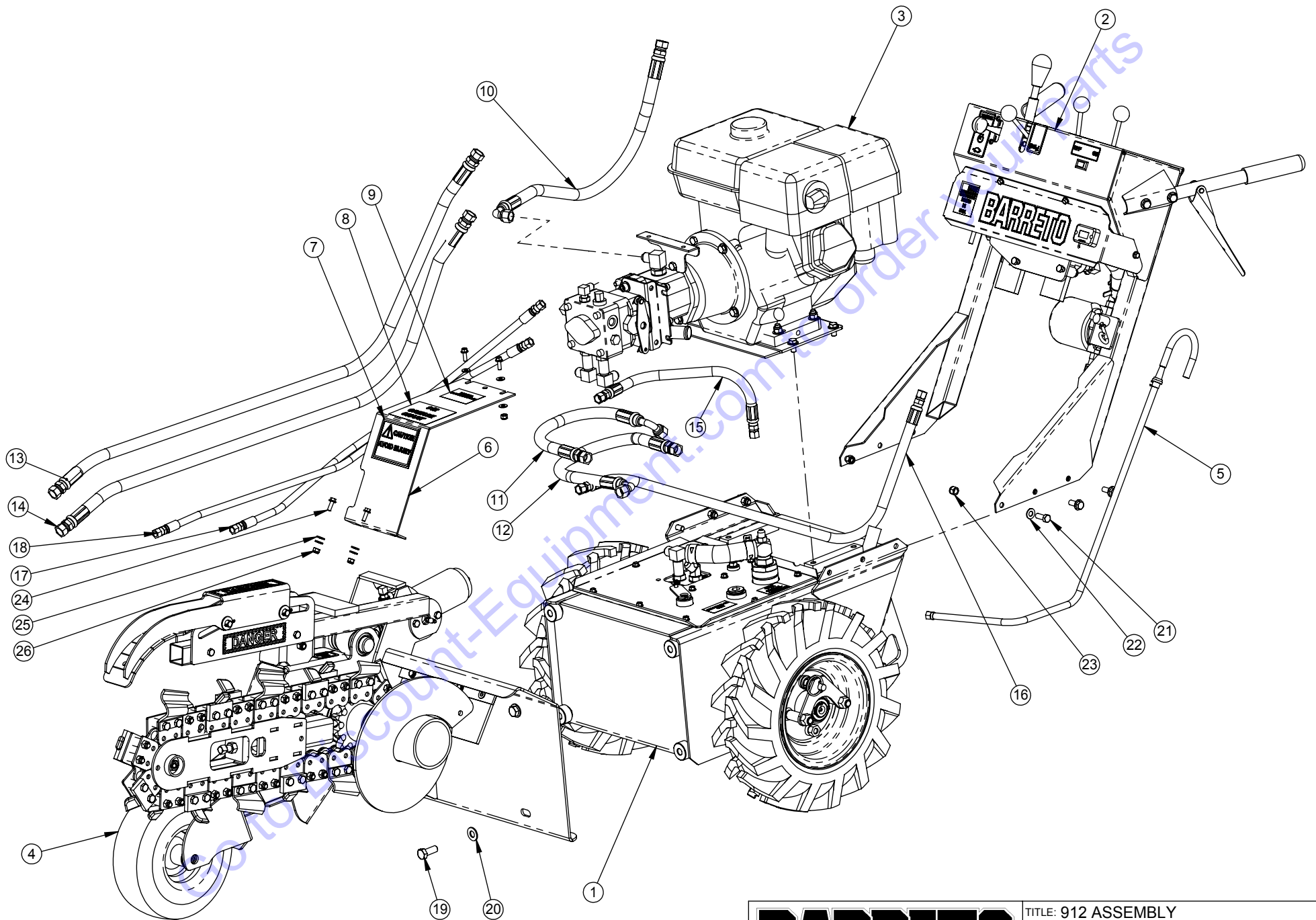
PRODUCT LINE: TRENCHER 912

DATE: 8/26/04

SCALE: 1:9

SHEET 1 OF 2

DWG# 00269



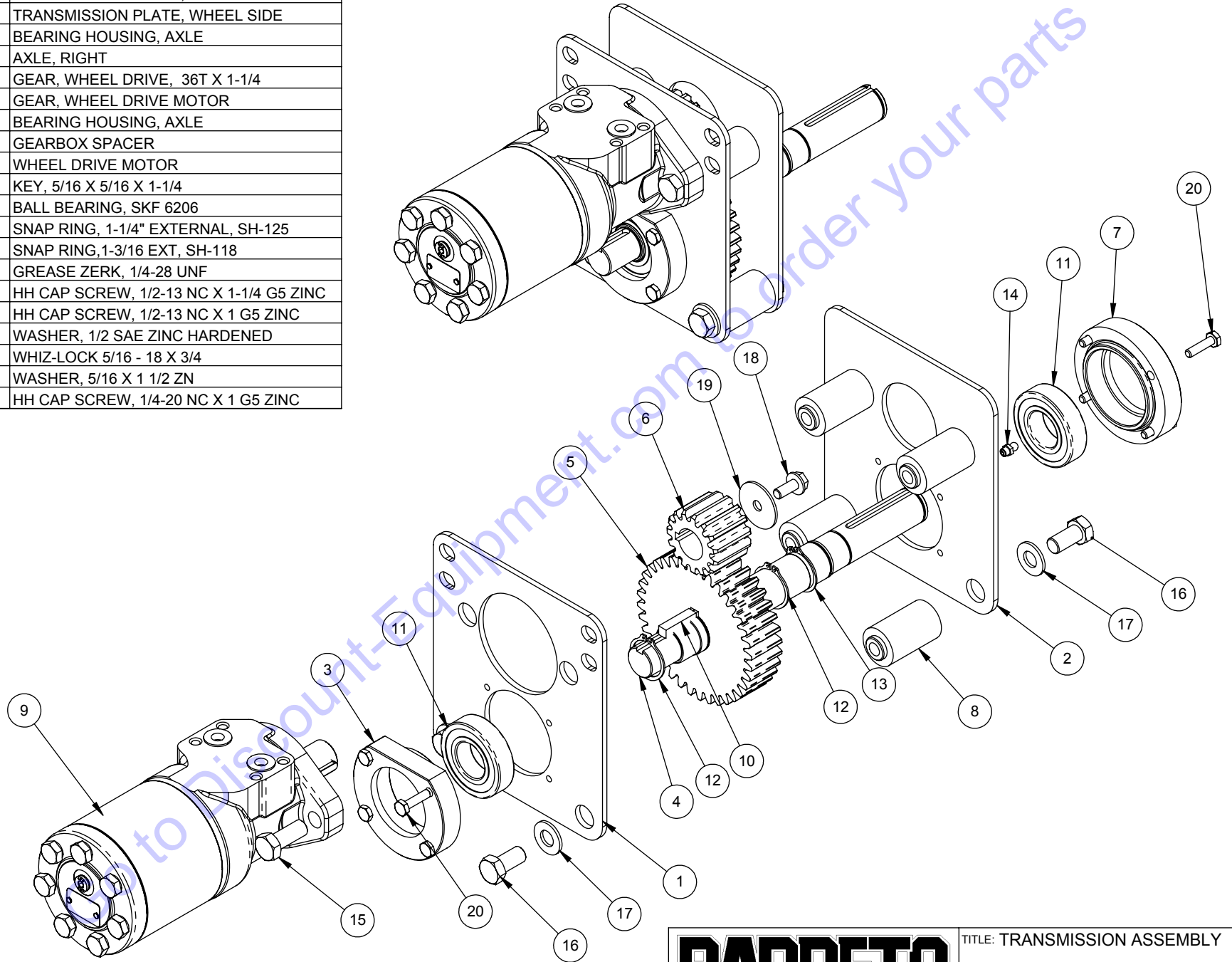
BARRETO

TITLE: 912 ASSEMBLY	
PRODUCT LINE: TRENCHER 912	DATE: 8/26/04
SCALE: 1:10	DWG# 00269
SHEET 2 OF 2	

REF	QTY.	PART NO.	DESCRIPTION
1	1	10228	TRANSMISSION PLATE, MOTOR SIDE
2	1	10229	TRANSMISSION PLATE, WHEEL SIDE
3	1	10183	BEARING HOUSING, AXLE
4	1	10230	AXLE, RIGHT
5	1	10063	GEAR, WHEEL DRIVE, 36T X 1-1/4
6	1	02075	GEAR, WHEEL DRIVE MOTOR
7	1	10235	BEARING HOUSING, AXLE
8	4	10219	GEARBOX SPACER
9	1	04502-F	WHEEL DRIVE MOTOR
10	1	05015	KEY, 5/16 X 5/16 X 1-1/4
11	2	03280	BALL BEARING, SKF 6206
12	2	05214	SNAP RING, 1-1/4" EXTERNAL, SH-125
13	1	05034	SNAP RING, 1-3/16 EXT, SH-118
14	1	05044	GREASE ZERK, 1/4-28 UNF
15	2	05323	HH CAP SCREW, 1/2-13 NC X 1-1/4 G5 ZINC
16	6	05067	HH CAP SCREW, 1/2-13 NC X 1 G5 ZINC
17	6	05102	WASHER, 1/2 SAE ZINC HARDENED
18	1	05140	WHIZ-LOCK 5/16 - 18 X 3/4
19	1	05546	WASHER, 5/16 X 1 1/2 ZN
20	8	05237	HH CAP SCREW, 1/4-20 NC X 1 G5 ZINC

REVISED 10/13/13

KEY SUPPLIED WITH MOTOR
1/4 X 1" WOODRUFF PN 05013



BARRETO

TITLE: TRANSMISSION ASSEMBLY

PRODUCT LINE: TRENCHER 912

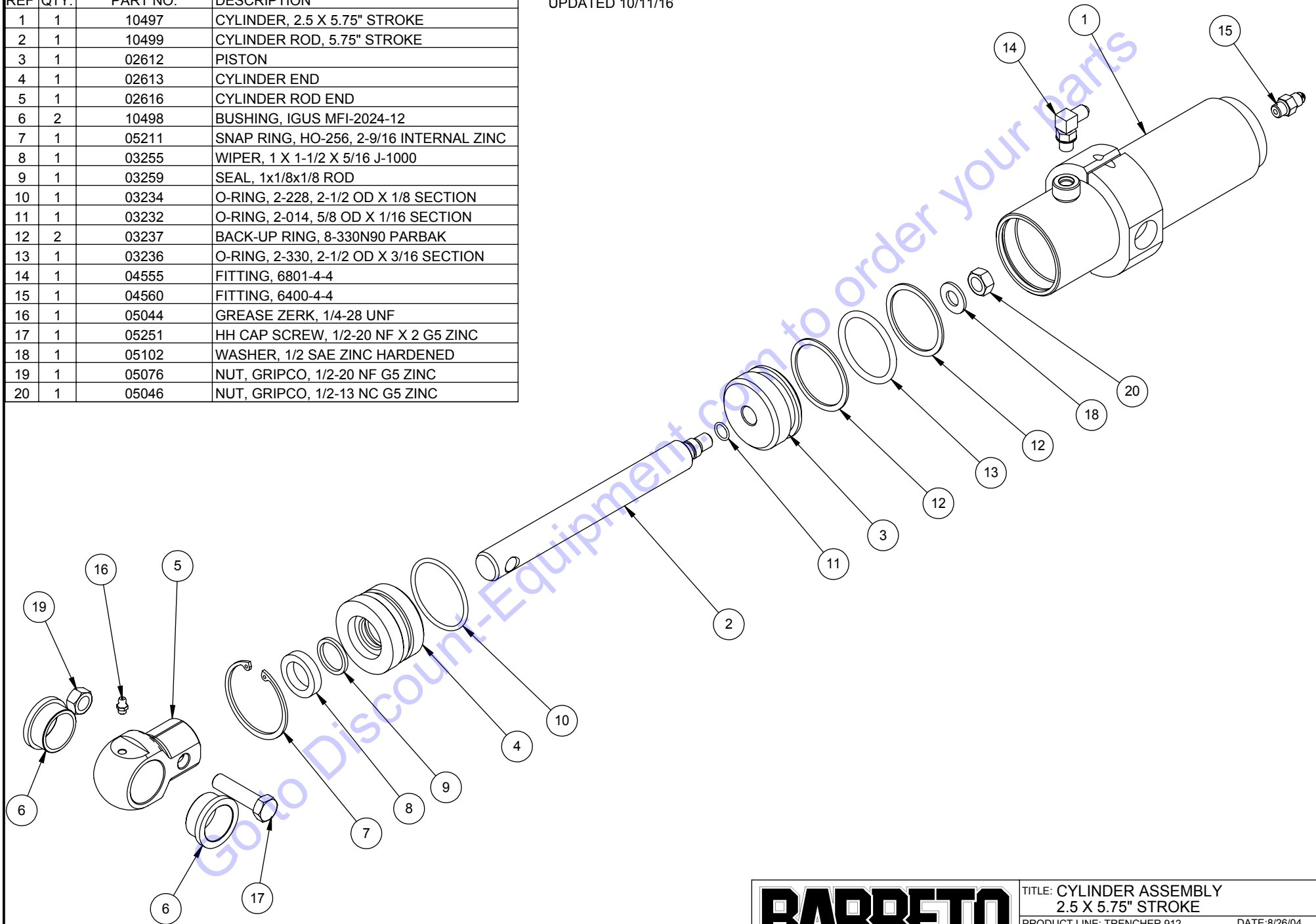
DATE: 3/10/04

SCALE: 1:4
SHEET 1 OF 1

DWG# 00268

REF	QTY.	PART NO.	DESCRIPTION
1	1	10497	CYLINDER, 2.5 X 5.75" STROKE
2	1	10499	CYLINDER ROD, 5.75" STROKE
3	1	02612	PISTON
4	1	02613	CYLINDER END
5	1	02616	CYLINDER ROD END
6	2	10498	BUSHING, IGUS MFI-2024-12
7	1	05211	SNAP RING, HO-256, 2-9/16 INTERNAL ZINC
8	1	03255	WIPER, 1 X 1-1/2 X 5/16 J-1000
9	1	03259	SEAL, 1x1/8x1/8 ROD
10	1	03234	O-RING, 2-228, 2-1/2 OD X 1/8 SECTION
11	1	03232	O-RING, 2-014, 5/8 OD X 1/16 SECTION
12	2	03237	BACK-UP RING, 8-330N90 PARBAK
13	1	03236	O-RING, 2-330, 2-1/2 OD X 3/16 SECTION
14	1	04555	FITTING, 6801-4-4
15	1	04560	FITTING, 6400-4-4
16	1	05044	GREASE ZERK, 1/4-28 UNF
17	1	05251	HH CAP SCREW, 1/2-20 NF X 2 G5 ZINC
18	1	05102	WASHER, 1/2 SAE ZINC HARDENED
19	1	05076	NUT, GRIPCO, 1/2-20 NF G5 ZINC
20	1	05046	NUT, GRIPCO, 1/2-13 NC G5 ZINC

UPDATED 10/11/16



BARRETO

TITLE: CYLINDER ASSEMBLY
2.5 X 5.75" STROKE

PRODUCT LINE: TRENCHER 912

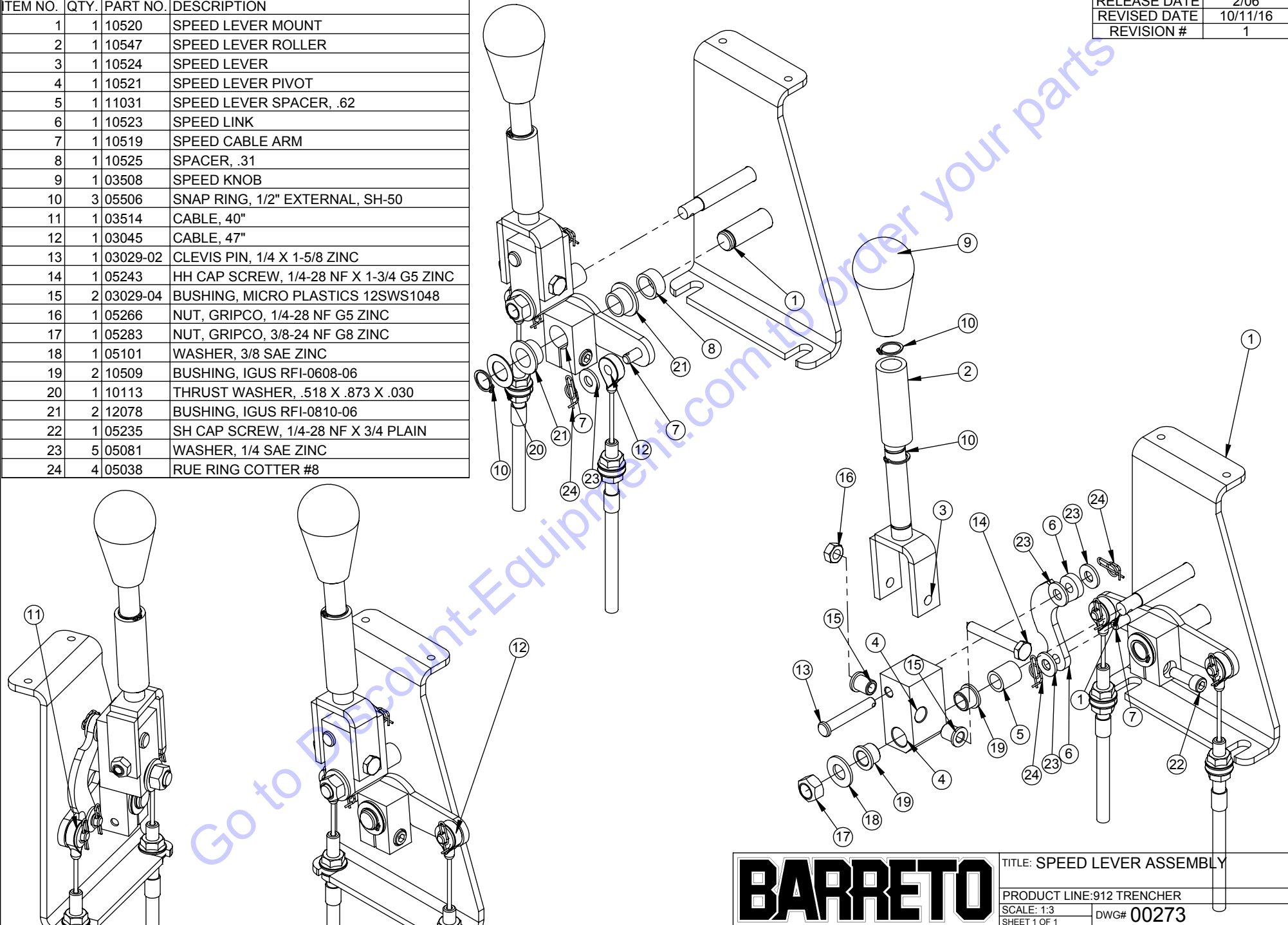
DATE: 8/26/04

SCALE: 1:4
SHEET 1 OF 1

DWG# 00271

ITEM NO.	QTY.	PART NO.	DESCRIPTION
1	1	10520	SPEED LEVER MOUNT
2	1	10547	SPEED LEVER ROLLER
3	1	10524	SPEED LEVER
4	1	10521	SPEED LEVER PIVOT
5	1	11031	SPEED LEVER SPACER, .62
6	1	10523	SPEED LINK
7	1	10519	SPEED CABLE ARM
8	1	10525	SPACER, .31
9	1	03508	SPEED KNOB
10	3	05506	SNAP RING, 1/2" EXTERNAL, SH-50
11	1	03514	CABLE, 40"
12	1	03045	CABLE, 47"
13	1	03029-02	CLEVIS PIN, 1/4 X 1-5/8 ZINC
14	1	05243	HH CAP SCREW, 1/4-28 NF X 1-3/4 G5 ZINC
15	2	03029-04	BUSHING, MICRO PLASTICS 12SWS1048
16	1	05266	NUT, GRIPCO, 1/4-28 NF G5 ZINC
17	1	05283	NUT, GRIPCO, 3/8-24 NF G8 ZINC
18	1	05101	WASHER, 3/8 SAE ZINC
19	2	10509	BUSHING, IGUS RFI-0608-06
20	1	10113	THRUST WASHER, .518 X .873 X .030
21	2	12078	BUSHING, IGUS RFI-0810-06
22	1	05235	SH CAP SCREW, 1/4-28 NF X 3/4 PLAIN
23	5	05081	WASHER, 1/4 SAE ZINC
24	4	05038	RUE RING COTTER #8

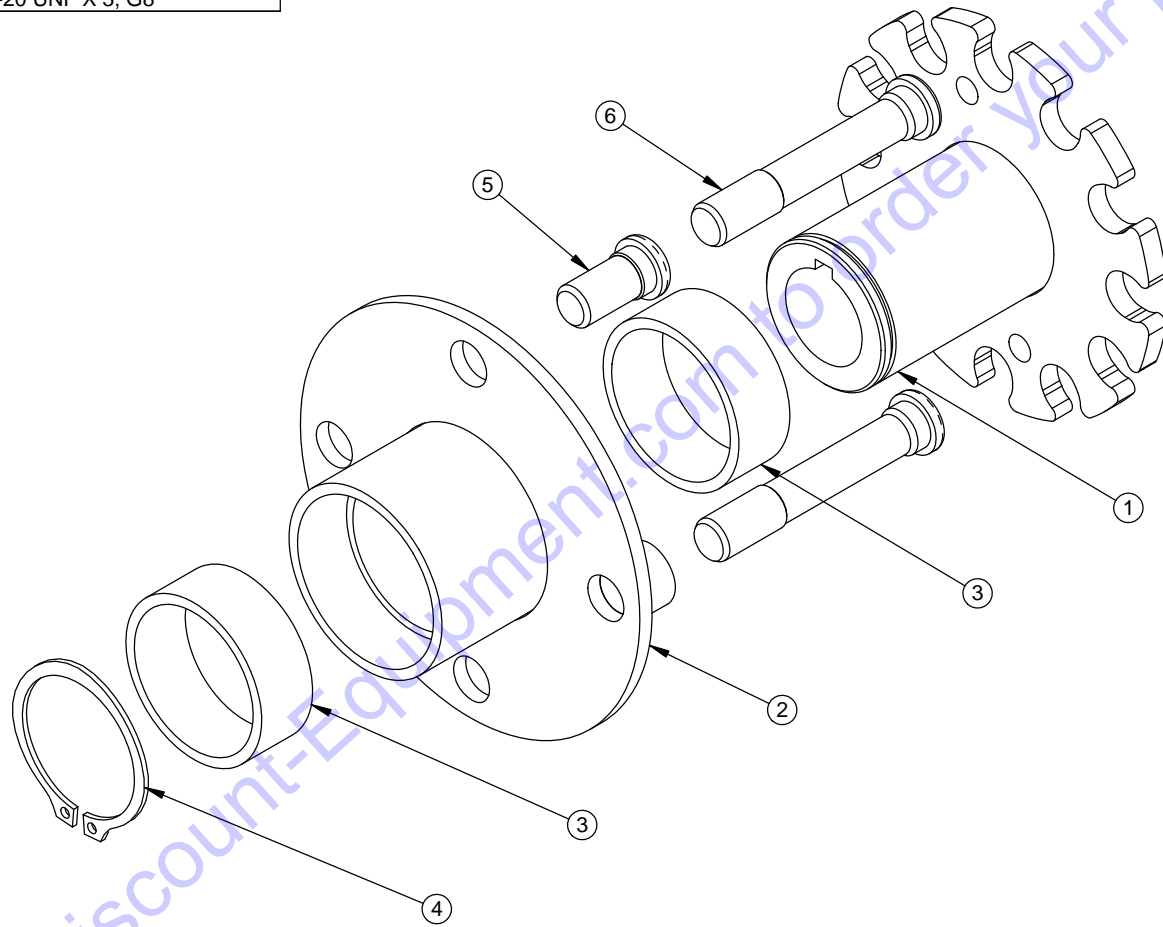
RELEASE DATE	2/06
REVISED DATE	10/11/16
REVISION #	1



BARRETO

TITLE: SPEED LEVER ASSEMBLY
 PRODUCT LINE: 912 TRENCHER
 SCALE: 1:3
 SHEET 1 OF 1
 DWG# 00273

REF	QTY.	PART NO.	DESCRIPTION
1	1	02269	WHEEL HUB
2	1	01252	FREE WHEEL HUB
3	2	03168	BUSHING, SLEEVE, NYLON, IGUS MSI-2832-12
4	1	05610	SNAP RING, SH-175, 1-3/4" EXTERNAL
5	1	05066	KNURLED STUD, 1/2-20 UNF X 1, G8
6	2	05166	KNURLED STUD, 1/2-20 UNF X 3, G8



NOTES:

- 1. USAGE: 2 PER 00231 R3, 00256 R1, & 10388.
- 1 OF 00231 R3 PER 1318.
- 1 OF 00256 R1 PER 912, 916 & 918.
- 1 OF 10388 PER 1320 & 1620.

BARRETO

TITLE: WHEEL HUB ASSY, 1-1/8" BORE

PRODUCT LINE: COMMON

DATE: 8/6/07

SCALE: 1:2
SHEET 1 OF 1

DWG# 02269-HUB

REF.	QTY.	PART NO.	DESCRIPTION
1	1	A1560-1L	SIDE PLATE, LIFT EYE
2	1	A1560-1R	SIDE PLATE
3	1	A1560-2	EYE

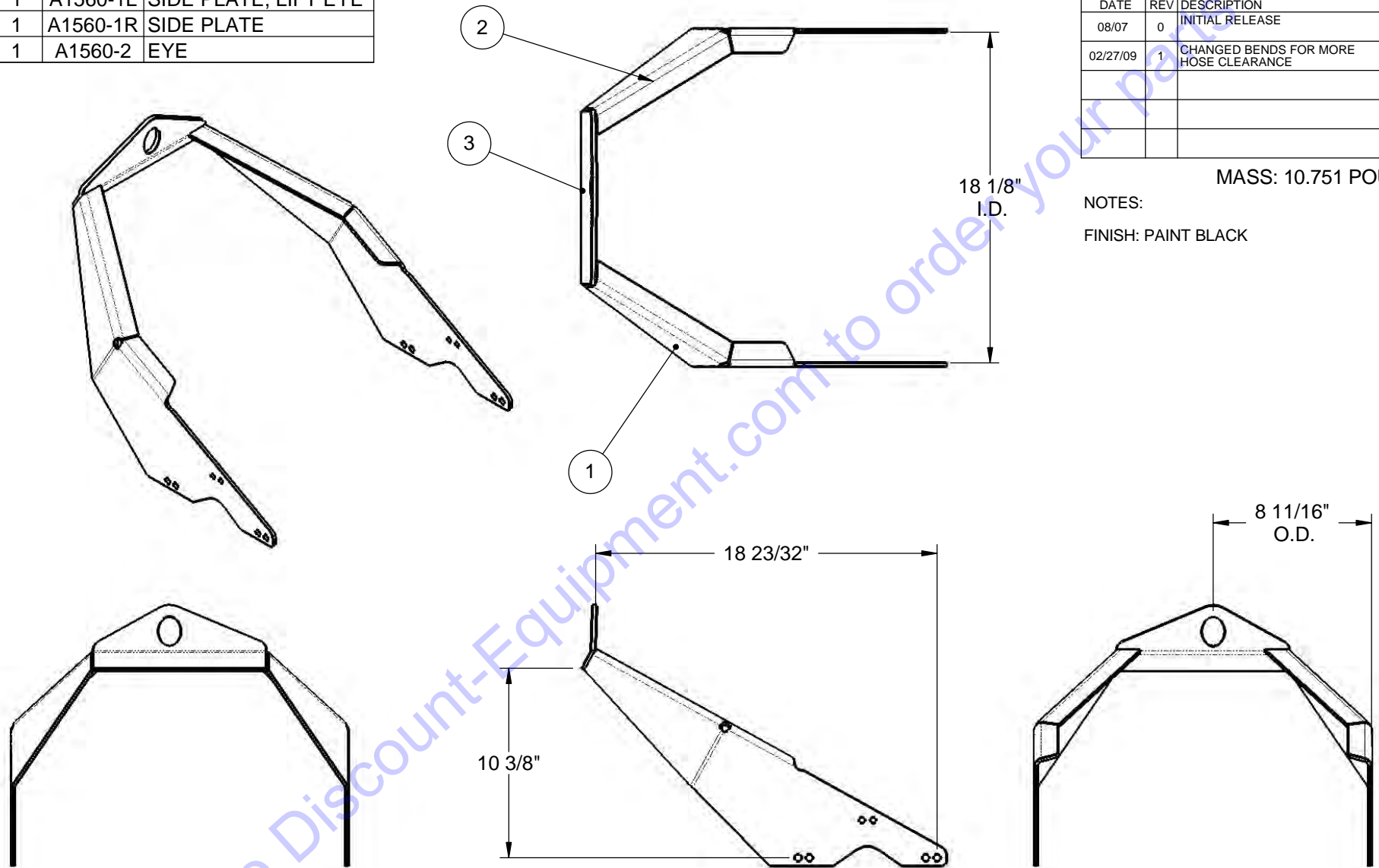
BARRETO

DATE	REV	DESCRIPTION	DWN	APP
08/07	0	INITIAL RELEASE	MZL	
02/27/09	1	CHANGED BENDS FOR MORE HOSE CLEARANCE	MZL	

MASS: 10.751 POUNDS

NOTES:

FINISH: PAINT BLACK



TOLERANCES UNLESS OTHERWISE SPECIFIED

FRACTIONS:	DECIMALS:	ANGLES:
$\geq 1/16 = \pm 1/16$.X = ± 1	$\pm 2^\circ$
$1/32 = \pm 1/32$.XX = ± 0.03	
$1/64 = \pm 1/64$.XXX = ± 0.005	

TITLE: LIFT EYE, 912

PRODUCT LINE: 912 TRENCHER

SCALE: 1:8

DWG# A1560

SHEET 1 OF 1

912 Trencher decals

P/N 03040-01



P/N 03040-02



P/N 03040-04



P/N 03040-06



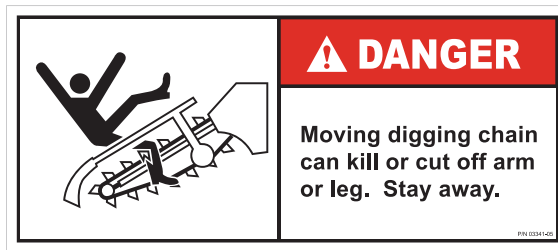
P/N 03040-07



P/N 03040-57



P/N 03341-05



P/N 03341-07



P/N 03341-12



P/N 03341-24



P/N 04430-05



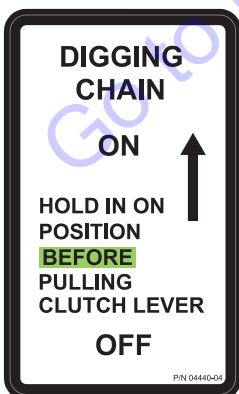
P/N 04440-02



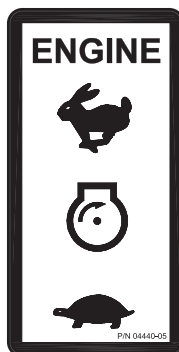
P/N 04440-03



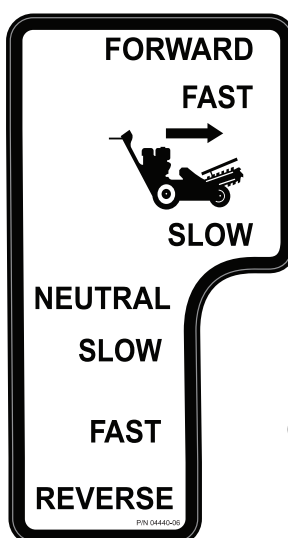
P/N 04440-04



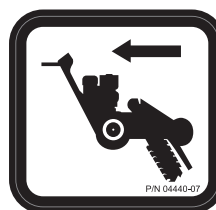
P/N 04440-05



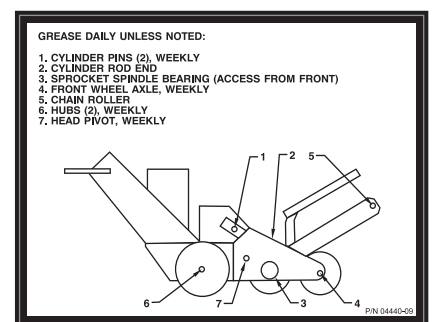
P/N 04440-06



P/N 04440-07



P/N 04440-09



ORDER P/N K3341-912 FOR COMPLETE SET

BARRETO 712/912 TRENCHER CHAIN TYPES / DESCRIPTIONS

STANDARD CUP CHAIN (AKA Skip Tooth)

This chain has a cup tooth on every other link.

Where to use it

This chain is most effective in loamy soil - soil that is packable into clods. It is also more effective in clay or "gumbo" soil that is sticky and clings to the chain. The space between the cups allows the soil to let go instead of running around with the chain as a slurry which prevents effective digging.



DOUBLE CUP CHAIN

This chain has a cup tooth on every link.

Where to use it

This chain is best for sand and dry, loose soil that has a tendency to fall back into the trench. The extra cups provide for better clean-out.



COMBO/SHARK CHAIN

This chain has an alternating pattern of cup and Shark teeth.

Where to use it.

Use this chain in pretty much the same conditions as the standard combo chain. Although not as aggressive, the Shark teeth last longer and do not fall off. This is our most popular chain.



SHARK CHAIN

The teeth on this chain are all Shark teeth that are welded onto the chain. Replacement teeth are not available for this chain.

Where to use it.

This chain can be used in the most adverse soils. It is good in rocky soil, "cliché", limestone, hard-pan and any other hard to dig soils. It does not clean out well in sandy or dry, loose, loamy soil. This is not the fastest but it is the most durable chain available. It is not uncommon for the teeth to outlast the chain rollers. When the rollers wear out, the complete chain must be replaced.



BOLT-ON SHARK CHAIN

This chain utilizes a standard chain blank and has Shark teeth that are bolted to the chain blank.

Where to use it.

This chain is good in all the conditions described for the Shark chain. The advantage is the teeth can be removed when the chain wears out and can be used on a new blank. It is not uncommon for the teeth to last through two chains.



NOTE: The 712 trencher chains are available in 12" & 18" lengths and 4" & 5" widths. The 912 chains are available in 12", 18", & 24" lengths and 4" & 6" widths.

PARTS FINDER

**Search Website
by Part Number**



**Search Manual
Library For Parts
Manual & Lookup Part
Numbers – Purchase
or Request Quote**

Search Manuals

Enter your information to help us find the right parts manual for your machine.

* Brand:

* Model:

* Serial:

* Part Number:

SEARCH

**Can't Find Part or
Manual? Request Help
by Manufacturer,
Model & Description**

Parts Order Form

Please fill in the following information to help us find the right part for your machine.

Manufacturer:	<input type="text"/>
Model:	<input type="text"/>
Description:	<input type="text"/>
Part Number:	<input type="text"/>
Quantity:	<input type="text"/>
Notes:	<input type="text"/>

Submit

Discount-Equipment.com is your online resource for quality parts & equipment.

Florida: **561-964-4949** Outside Florida TOLL FREE: **877-690-3101**

Need parts?

Click on this link: <http://www.discount-equipment.com/category/5443-parts/> and choose one of the options to help get the right parts and equipment you are looking for. Please have the machine model and serial number available in order to help us get you the correct parts. If you don't find the part on the website or on one of the online manuals, please fill out the request form and one of our experienced staff members will get back to you with a quote for the right part that your machine needs.

We sell worldwide for the brands: Genie, Terex, JLG, MultiQuip, Mikasa, Essick, Whiteman, Mayco, Toro Stone, Diamond Products, Generac Magnum, Airman, Haulotte, Barreto, Power Blanket, Nifty Lift, Atlas Copco, Chicago Pneumatic, Allmand, Miller Curber, Skyjack, Lull, Skytrak, Tsurumi, Husquvarna Target, Stow, Wacker, Sakai, Mi-T-M, Sullair, Basic, Dynapac, MBW, Weber, Bartell, Bennar Newman, Haulotte, Ditch Runner, Menegotti, Morrison, Contec, Buddy, Crown, Edco, Wyco, Bomag, Laymor, EZ Trench, Bil-Jax, F.S. Curtis, Gehl Pavers, Heli, Honda, ICS/PowerGrit, IHI, Partner, Imer, Clipper, MMD, Koshin, Rice, CH&E, General Equipment, Amida, Coleman, NAC, Gradall, Square Shooter, Kent, Stanley, Tamco, Toku, Hatz, Kohler, Robin, Wisconsin, Northrock, Oztec, Toker TK, Rol-Air, APT, Wylie, Ingersoll Rand / Doosan, Innovatech, Con X, Ammann, Mecalac, Makinex, Smith Surface Prep, Small Line, Wanco, Yanmar