



OWNER'S MANUAL AND PARTS BOOK

**WALK BEHIND
MATERIAL SPREADER
MS20**



**ORIGINAL
LANGUAGE**



www.Discount-Equipment.com

Doc. # OIPB - M11205
Orig. Rel. - 03/2015

PARTS FINDER

**Search Website
by Part Number**



**Search Manual
Library For Parts
Manual & Lookup Part
Numbers – Purchase
or Request Quote**

Search Manuals

Enter your information to help us find the right parts manual for your machine.

* Brand:

* Model:

* Serial:

* Part Number:

SEARCH

**Can't Find Part or
Manual? Request Help
by Manufacturer,
Model & Description**

Parts Order Form

Please fill in the following information to help us find the right part for your machine.

Manufacturer:

Model:

Description:

Quantity:

Part Number:

Part Name:

Part Description:

Part Location:

Part Condition:

Part Status:

Part Color:

Part Material:

Part Weight:

Part Dimensions:

Part Price:

Part Lead Time:

Part Availability:

Part Notes:

Submit

Discount-Equipment.com is your online resource for quality parts & equipment.





Florida: **561-964-4949** Outside Florida TOLL FREE: **877-690-3101**

Need parts?

Click on this link: <http://www.discount-equipment.com/category/5443-parts/> and choose one of the options to help get the right parts and equipment you are looking for. Please have the machine model and serial number available in order to help us get you the correct parts. If you don't find the part on the website or on one of the online manuals, please fill out the request form and one of our experienced staff members will get back to you with a quote for the right part that your machine needs.

We sell worldwide for the brands: Genie, Terex, JLG, MultiQuip, Mikasa, Essick, Whiteman, Mayco, Toro Stone, Diamond Products, Generac Magnum, Airman, Haulotte, Barreto, Power Blanket, Nifty Lift, Atlas Copco, Chicago Pneumatic, Allmand, Miller Curber, Skyjack, Lull, Skytrak, Tsurumi, Husquvarna Target, Stow, Wacker, Sakai, Mi-T-M, Sullair, Basic, Dynapac, MBW, Weber, Bartell, Bennar Newman, Haulotte, Ditch Runner, Menegotti, Morrison, Contec, Buddy, Crown, Edco, Wyco, Bomag, Laymor, EZ Trench, Bil-Jax, F.S. Curtis, Gehl Pavers, Heli, Honda, ICS/PowerGrit, IHI, Partner, Imer, Clipper, MMD, Koshin, Rice, CH&E, General Equipment, Amida, Coleman, NAC, Gradall, Square Shooter, Kent, Stanley, Tamco, Toku, Hatz, Kohler, Robin, Wisconsin, Northrock, Oztec, Toker TK, Rol-Air, APT, Wylie, Ingersoll Rand / Doosan, Innovatech, Con X, Ammann, Mecalac, Makinex, Smith Surface Prep, Small Line, Wanco, Yanmar

SAFETY PRECAUTIONS

SAFETY PRECAUTIONS	
	<p> CAUTION</p> <p>MOVING PARTS Before using the machine ensure that all guards and safety devices are in place and functioning properly.</p>
	<p> ATTENTION</p> <p>READ OWNER'S MANUAL Read and understand operator's manual before using this machine. Failure to follow operating instructions could result in serious injury or death.</p>

Discount-Equipment.com

TABLE OF CONTENTS

WALK BEHIND MATERIAL SPREADER WARRANTY.....5
SPECIFICATIONS5
PREVENTATIVE MAINTENANCE AND ROUTINE SERVICE PLAN6
ROUTINE SERVICE7
OPERATION7
ASSEMBLY INSTRUCTIONS..... 8-9
ASSEMBLY DRAWING AND PARTS LIST 11-13
NOTES 14-15

Discount-Equipment.com

WARRANTY

WALK BEHIND MATERIAL SPREADER

Bartell agrees to furnish without charge, F.O.B. our plant, a replacement for any part or portion thereof, the Material Spreader, to be defective in either material or workmanship within a period of twelve (12) months from date of purchase, provided that notice of such defective part or portion thereof is given to Bartell Morrison Inc. Within the twelve month warranty period. No further or other guarantee or warranty expressed or implied in connection with the sale of the Material Spreader is given and our sole liability consists in replacing defective parts or portions thereof. We shall not be responsible for any special, indirect or consequential damages arising in any manner whatsoever.

This guarantee is for the sole benefit of the original purchaser as end user. Our responsibility under this guarantee ends in the case the original purchaser transfers ownership of the Material Spreader, make any changes or adds any parts or devices not of our manufacture to the Material Spreader.

SPECIFICATIONS

DIMENSIONS	
Length (handle up)	95cm
Height (handle up)	93cm
Length (handle down)	65cm
Height (handle down)	62cm
Width	130cm
Discharge Width	99cm
Weight	60kg

PREVENTATIVE MAINTENANCE AND ROUTINE SERVICE PLAN

This Material Spreader has been assembled with care and will provide years of service. Preventative maintenance and routine service are essential to the long life of your Material Spreader. Your dealer is interested in your new machine and has the desire to help you get the most value from it. After reading through this manual thoroughly, you will find that you can do some of the regular maintenance yourself. However, when in need of parts or major service, be sure to see your Bartell Morrison dealer. For your convenience we have provided this space to record relevant data about your Material Spreader. When in need of parts or service be prepared to provide your Material Spreader serial number. Locate the serial number now and record in the space below.

Date Purchased:		Type of Machine:	
Dealer Name:		Model:	
Dealer Phone:		Serial Number:	

Replacement Parts Used				Maintenance Log	
Part No.	Quantity	Cost	Date	Date	Operation

ROUTINE SERVICE INTERVAL

Due to the nature and environment of use, the Material Spreader could be exposed to severe operating conditions. Some general maintenance guidelines will extend the useful life of your machine.

- Regular service will prolong the life of the Material Spreader and prevent expensive repairs.
- Keeping your Material Spreader clean and free from debris is the single most important regular maintenance operation, over and above the checks in the service schedule that can be performed.
- After each use your Material Spreader should be emptied and cleaned to remove any dust and debris from the hopper, gate opening and surrounding components.
- Check the gate control handle for smooth operation.
- Failure to have your Material Spreader regularly serviced and properly maintained in accordance with the manufacturer's instructions will lead to premature failure and void the warranty.

OPERATION

- Close the gate before adding any material into the hopper.
- Perform testing in order to determine a proper gate opening and proper working speed in relation to the desired quantity of material to be spread for the number of spreading passes.
- For best performance during spreading, keep the hopper over half full.

ASSEMBLY INSTRUCTIONS

Step 1: Take wheels and spreader out of the box.

Step 2: The wheel mounting bolts will already be on the hubs for the wheels

Step 3: Mount wheels to the mounting plate and secure mounting bolts



Step 4: Material Spreader shown with handle in the folded down position.



Step 5: Raise handle and align slot with stud.



Step 6: Slide slot onto the stud

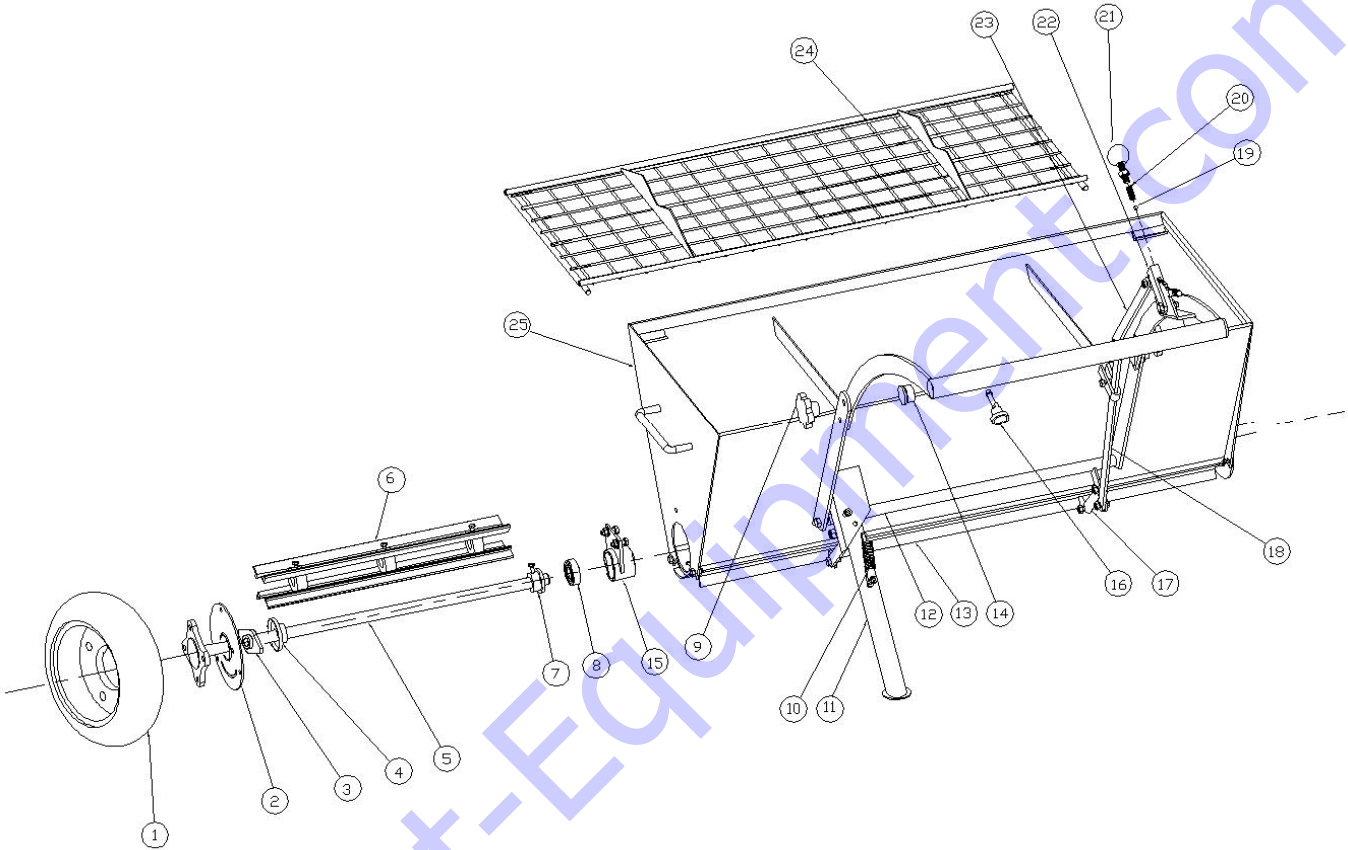


Step 7: Tighten knob to secure the handle in place

Discount-Equipment.com

ASSEMBLY DRAWING AND PARTS LIST

Discount-Equipment.com



Discount-Equipment.com

MATERIAL SPREADER PARTS LIST

<u>NO.</u>	<u>PART NO.</u>	<u>PART NAME</u>	<u>QTY.</u>
1	88001	WHEEL	2
2	88002	PLATE	2
3	88003	DIAMOND BEARING	2
4	88004	BEARING BLOCK	2
5	88005	WHEEL SHAFT	2
6	88006	AXLE	2
7	88007	BEARING BLOCK	2
8	88008	BEARING	2
9	88009	KNOB	2
10	88010	SPRING	1
11	88011	STAND	1
12	88012	CONNECTING ROD	1
13	88013	BAFFLE	1
14	88014	PLUG	2
15	88015	BEARING HOUSING	1
16	88016	LOCK PIN	1
17	88017	SHORT ROD	2
18	88018	LONG ROD	1
19	88019	BALL	1
20	88020	SPRING	1
21	88021	CONTROL KNOB	1
22	88022	ADJUSTER	1
23	88023	ROD	1
24	88024	NET	1
25	88025	HOPPER	1

PARTS FINDER

**Search Website
by Part Number**



**Search Manual
Library For Parts
Manual & Lookup Part
Numbers – Purchase
or Request Quote**

Search Manuals

Enter your information to help us find the right manual for your equipment.

* Brand:

* Model:

* Serial:

* Part Number:

SEARCH

**Can't Find Part or
Manual? Request Help
by Manufacturer,
Model & Description**

Parts Order Form

Please fill in the following information to help us find the right part for your equipment.

Manufacturer:

Model:

Description:

Quantity:

Contact Name:

Company:

Address:

City:

State:

Zip:

Phone:

Fax:

E-mail:

Submit

Discount-Equipment.com is your online resource for quality parts & equipment.

Florida: **561-964-4949** Outside Florida TOLL FREE: **877-690-3101**

Need parts?

Click on this link: <http://www.discount-equipment.com/category/5443-parts/> and choose one of the options to help get the right parts and equipment you are looking for. Please have the machine model and serial number available in order to help us get you the correct parts. If you don't find the part on the website or on one of the online manuals, please fill out the request form and one of our experienced staff members will get back to you with a quote for the right part that your machine needs.

We sell worldwide for the brands: Genie, Terex, JLG, MultiQuip, Mikasa, Essick, Whiteman, Mayco, Toro Stone, Diamond Products, Generac Magnum, Airman, Haulotte, Barreto, Power Blanket, Nifty Lift, Atlas Copco, Chicago Pneumatic, Allmand, Miller Curber, Skyjack, Lull, Skytrak, Tsurumi, Husquvarna Target, Stow, Wacker, Sakai, Mi-T-M, Sullair, Basic, Dynapac, MBW, Weber, Bartell, Bennar Newman, Haulotte, Ditch Runner, Menegotti, Morrison, Contec, Buddy, Crown, Edco, Wyco, Bomag, Laymor, EZ Trench, Bil-Jax, F.S. Curtis, Gehl Pavers, Heli, Honda, ICS/PowerGrit, IHI, Partner, Imer, Clipper, MMD, Koshin, Rice, CH&E, General Equipment, Amida, Coleman, NAC, Gradall, Square Shooter, Kent, Stanley, Tamco, Toku, Hatz, Kohler, Robin, Wisconsin, Northrock, Oztec, Toker TK, Rol-Air, APT, Wylie, Ingersoll Rand / Doosan, Innovatech, Con X, Ammann, Mecalac, Makinex, Smith Surface Prep, Small Line, Wanco, Yanmar