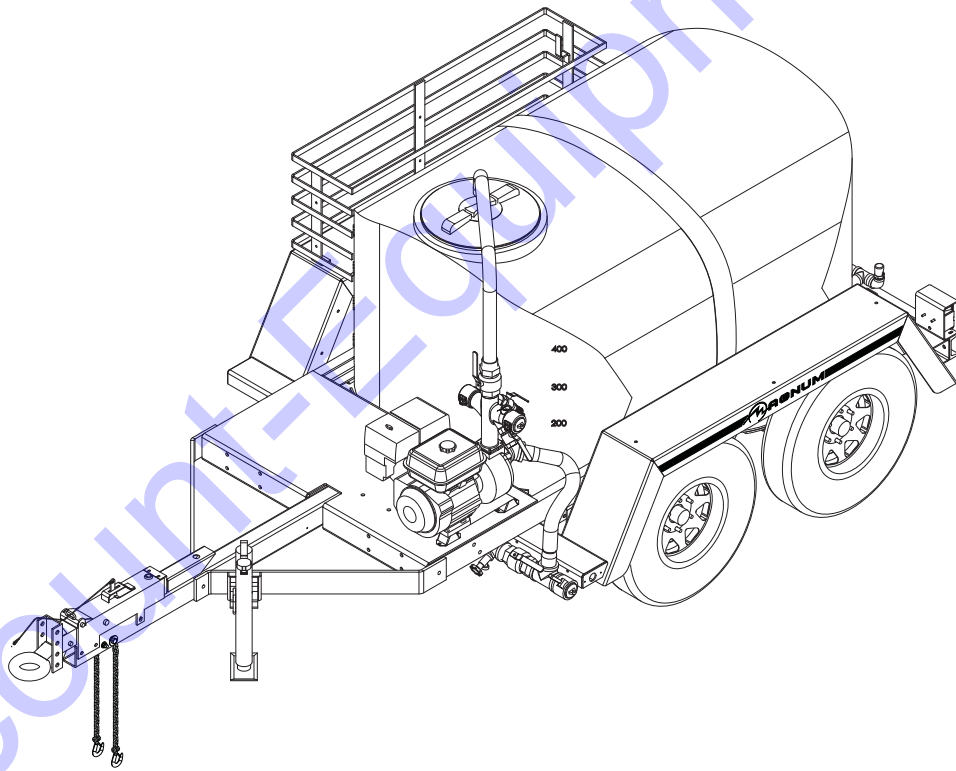




MAGNUM™

POWER PRODUCTS LLC

WATER TRAILER MWT500 PARTS MANUAL



www.discount-equipment.com

Discount Equipment

Discount-Equipment.com is your online resource for commercial and industrial quality parts and equipment sales.

Locations:

Florida (West Palm Beach): [561-964-4949](tel:561-964-4949)

Outside Florida TOLL FREE: [877-690-3101](tel:877-690-3101)

Need parts? Check out our website at www.discount-equipment.com

Can't find what you need?

Click on this link: <http://www.discount-equipment.com/category/5443-parts/> and fill out the request form.

Please have the machine model and serial number available in order to help us get you the correct parts. One of our experienced staff members will get back to you with a quote for the right part that your machine needs.

We sell worldwide for the brands: Genie, Terex, JLG, MultiQuip, Mayco, Toro/Stone, Diamond Products, Magnum, Airman, Mustang, Power Blanket, Nifty Lift, Atlas Copco, Chicago Pneumatic, Allmand Brothers, Essick, Miller Spreader, Skyjack, Lull, Skytrak, Tsurumi, Husquvarna/Target, Whiteman-Concrete/Mortar, Stow-Concrete/Mortar, Baldor, Wacker, Sakai, Snorkel, Upright, Mi-T-M, Sullair, Neal, Basic, Dynapac, MBW, Weber, Bartell, Bennar Newman, Haulotte, Ditch Runner, Blaw-Knox, Himoina, Best, Buddy, Crown, Edco, Wyco, Bomag, Laymor, Terremite, Barreto, EZ Trench, Takeuchi, Basic, Bil-Jax, Curtis, Gehl, Heli, Honda, ICS/PowerGrit, Puckett, Waldon, ASV, IHI, Partner, Imer, Clipper, MMD, Koshin, Rice, Gorman Rupp, CH&E, Cat Pumps, Comet, General Pump, Giant, AMida, Coleman, NAC, Gradall, Square Shooter, Kent, Stanley, Tamco, Toku, Hatz, Kohler, Robin, Wisconsin, Northrock, Oztec, Toker TK, Rol-Air, Small Line, Wanco, Yanmar

New Equipment - Used Equipment - Rental Equipment - Parts and Accessories

Discount Equipment

www.discount-equipment.com

561-964-4949

Sales: info@Discount-Equipment.com

Parts: wbparts@Discount-Equipment.com

INTRODUCTION

Before servicing this machine, make sure the engine is shut down, and the negative (-) terminal on the battery is disconnected. Attach a "DO NOT START" sign to the engine. This will notify everyone that the unit is being serviced and will reduce the chance of someone inadvertently trying to start the unit.

Pump Serial Number: _____

Unit Model Number: _____

Unit Serial Number: _____

▲ WARNING

CALIFORNIA PROPOSITION 65 WARNING:

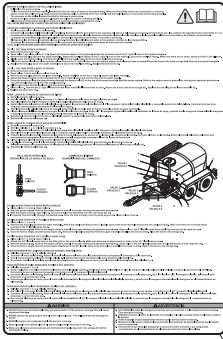
Diesel engine exhaust and some of its constituents are known to the state of California to cause cancer, birth defects and other reproductive harm.

TABLE OF CONTENTS

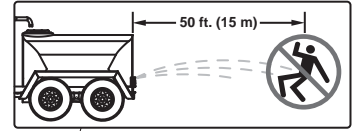
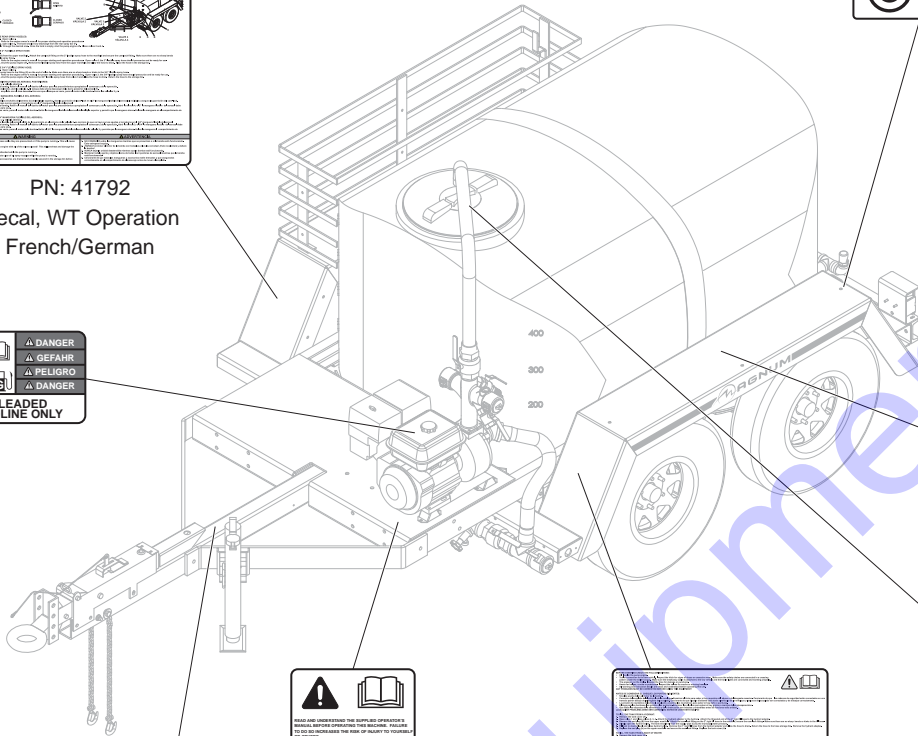
	Page
INTRODUCTION	2
TABLE OF CONTENTS	3
UNIT DECALS (1 OF 2)	4
UNIT DECALS (2 OF 2)	5
PUMP COMPONENTS	6
ENGINE AND PUMP COMPONENTS	8
ENGINE AND PUMP ASSEMBLY	10
UPPER MANIFOLD ASSEMBLY	12
LOWER MANIFOLD ASSEMBLY	14
UPPER AND LOWER MANIFOLD ASSEMBLIES	16
UPPER AND LOWER MANIFOLD ASSEMBLIES	18
TANK ASSEMBLY	20
SPRAY BAR ASSEMBLY	22
FILL HOSE ASSEMBLY	24
DISCHARGE HOSE ASSEMBLIES	26
FENDER COMPONENTS	28
AXLES TO SKID	30
FRAME COMPONENTS	32
RECOMMENDED SPARE PARTS LIST	34

Discount-Equipment.com

UNIT DECALS (1 OF 2)



PN: 41792
Decal, WT Operation
French/German



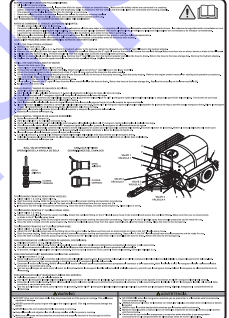
Located on rear of both fenders.



Located on top of both fenders, centered.



Located on both sides of pipe.

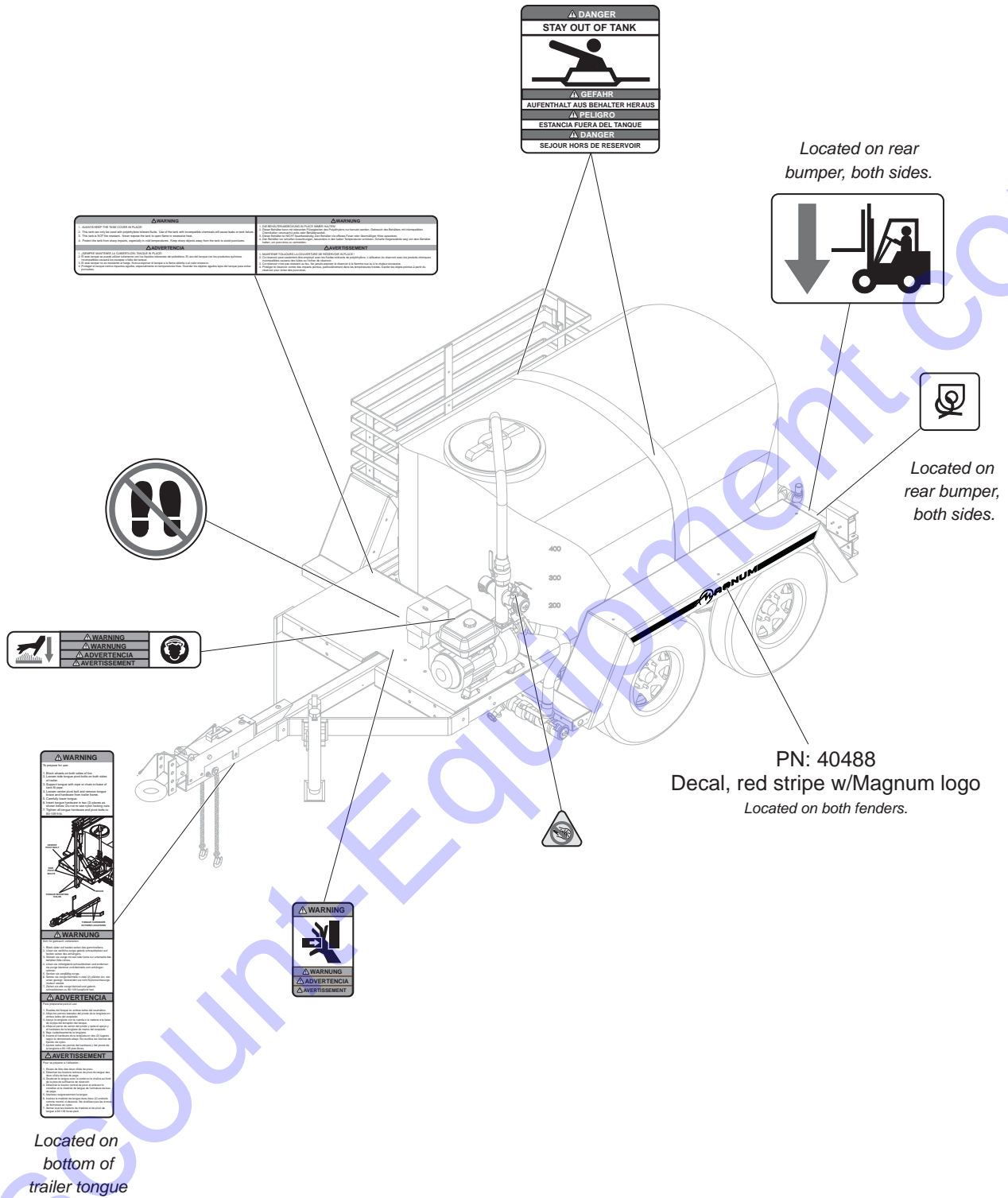


PN: 11540
Decal, WT Operation
English/Spanish

TOWING INSTRUCTIONS 1. Read operator's manual. 2. Use proper hitching technique. 3. Do not tow uphill. 4. Do not tow downhill. 5. Do not tow on uneven ground. 6. Do not tow on wet or icy surfaces. 7. Do not tow on rough terrain. 8. Do not tow on soft ground. 9. Do not tow on steep slopes. 10. Do not tow on uneven ground.	ASSEMBLEINSTRUKTIONEN 1. Lesen Sie das Bedienungsmanual. 2. Benutzen Sie die richtige Anbautechnik. 3. Ziehen Sie nicht bergauf. 4. Ziehen Sie nicht bergab. 5. Ziehen Sie nicht auf unebenem Gelände. 6. Ziehen Sie nicht auf nassen oder eisigen Oberflächen. 7. Ziehen Sie nicht auf rauhem Gelände. 8. Ziehen Sie nicht auf weichen Boden. 9. Ziehen Sie nicht auf steilen Hängen. 10. Ziehen Sie nicht auf unebenem Gelände.	INSTRUCCIONES DE REMOLQUE 1. Lea el manual del operador. 2. Use la técnica correcta de acople. 3. No remolque cuesta arriba. 4. No remolque cuesta abajo. 5. No remolque en terreno desigual. 6. No remolque en superficies húmedas o heladas. 7. No remolque en terreno irregular. 8. No remolque en terreno blando. 9. No remolque en pendientes pronunciadas. 10. No remolque en terreno desigual.
---	--	--

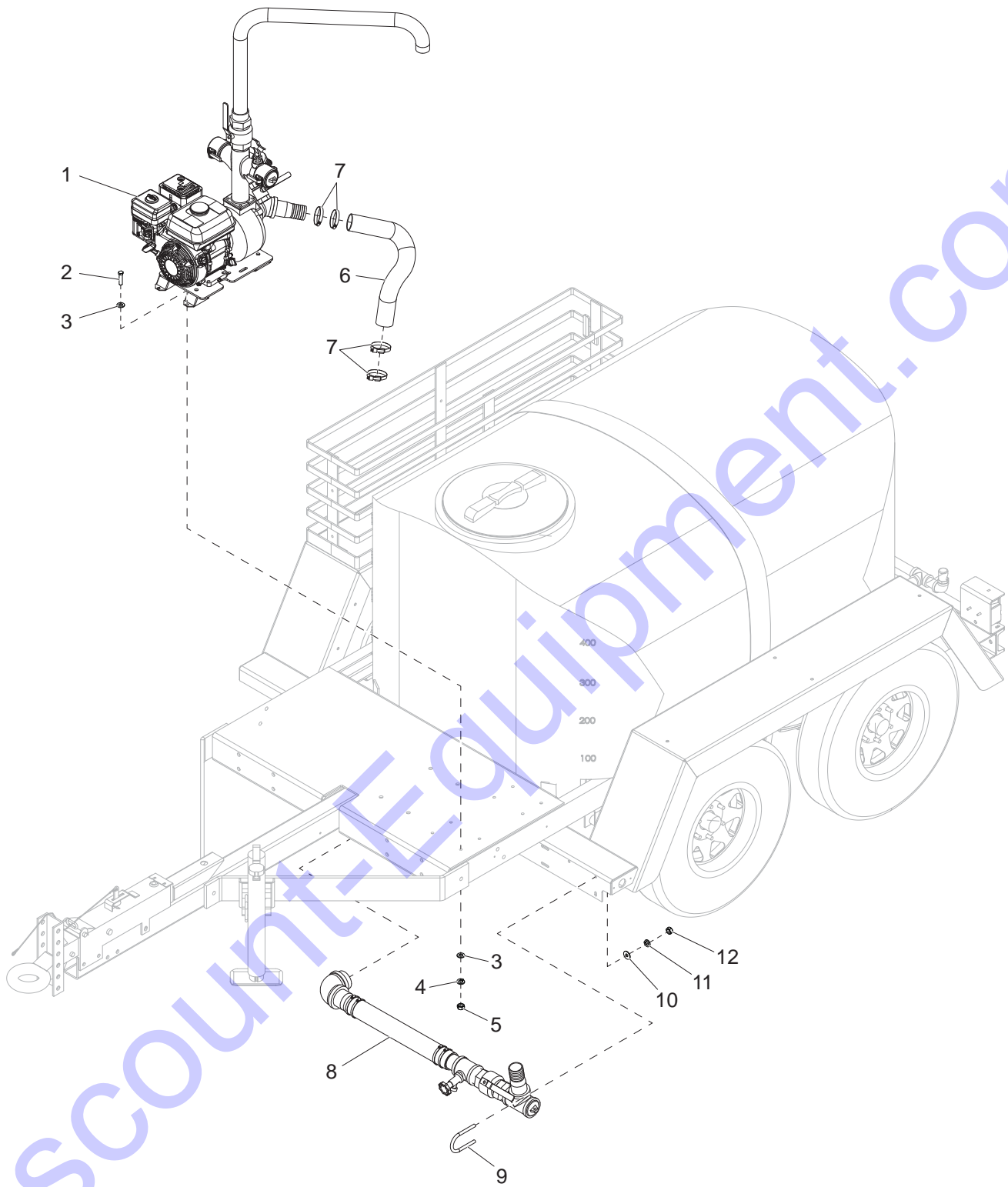
Note: All safety and operating decals are located on decal sheet 40487, unless otherwise noted.

UNIT DECALS (2 OF 2)



Note: All safety and operating decals are located on decal sheet 40487, unless otherwise noted.

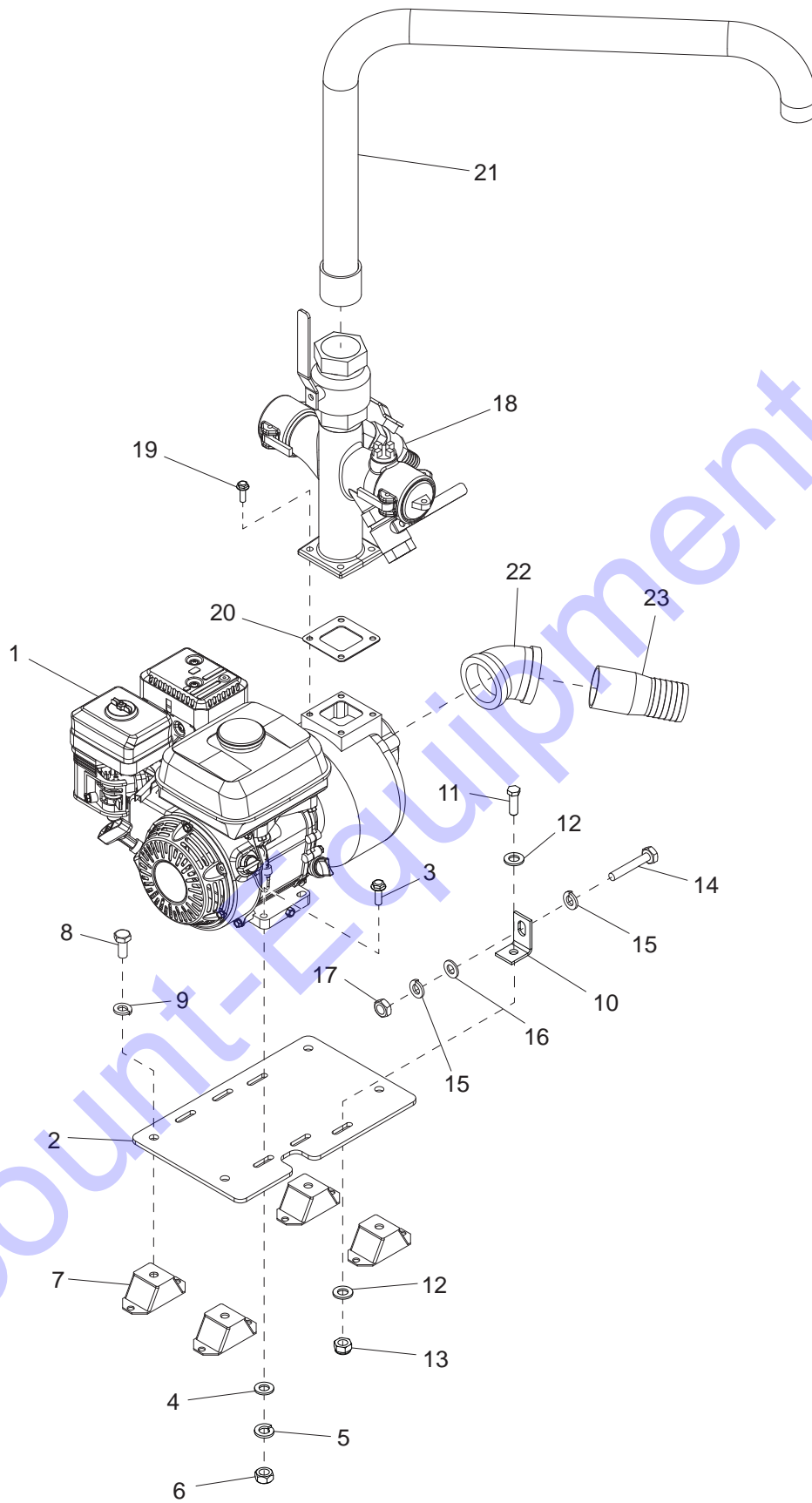
PUMP COMPONENTS



ITEM	PART	QTY	DESCRIPTION	NOTES
1	Page 8	1	Engine and pump components	
2	60205	8	Screw, .375-16x1.000 std hex, G5	
3	60386	16	Washer, .375 flat .993/.064	
4	60206	8	Washer, .375 split lock	
5	60140	8	Nut, .375-16 hex, G5	
6	49787	1	Hose, water - 2.00 x 37ft	
7	60316	4	Clamp, hose - SAE 032 (1.56-2.50)	
8	Page 14	1	Lower manifold assembly	
9	60510	2	Bolt, U - .312-18 x 2.50 x 5.625	
10	60119	4	Washer, .312 flat .875/.070	
11	60271	4	Washer, .312 split lock	
12	60285	4	Nut, .312-18 hex, G2	

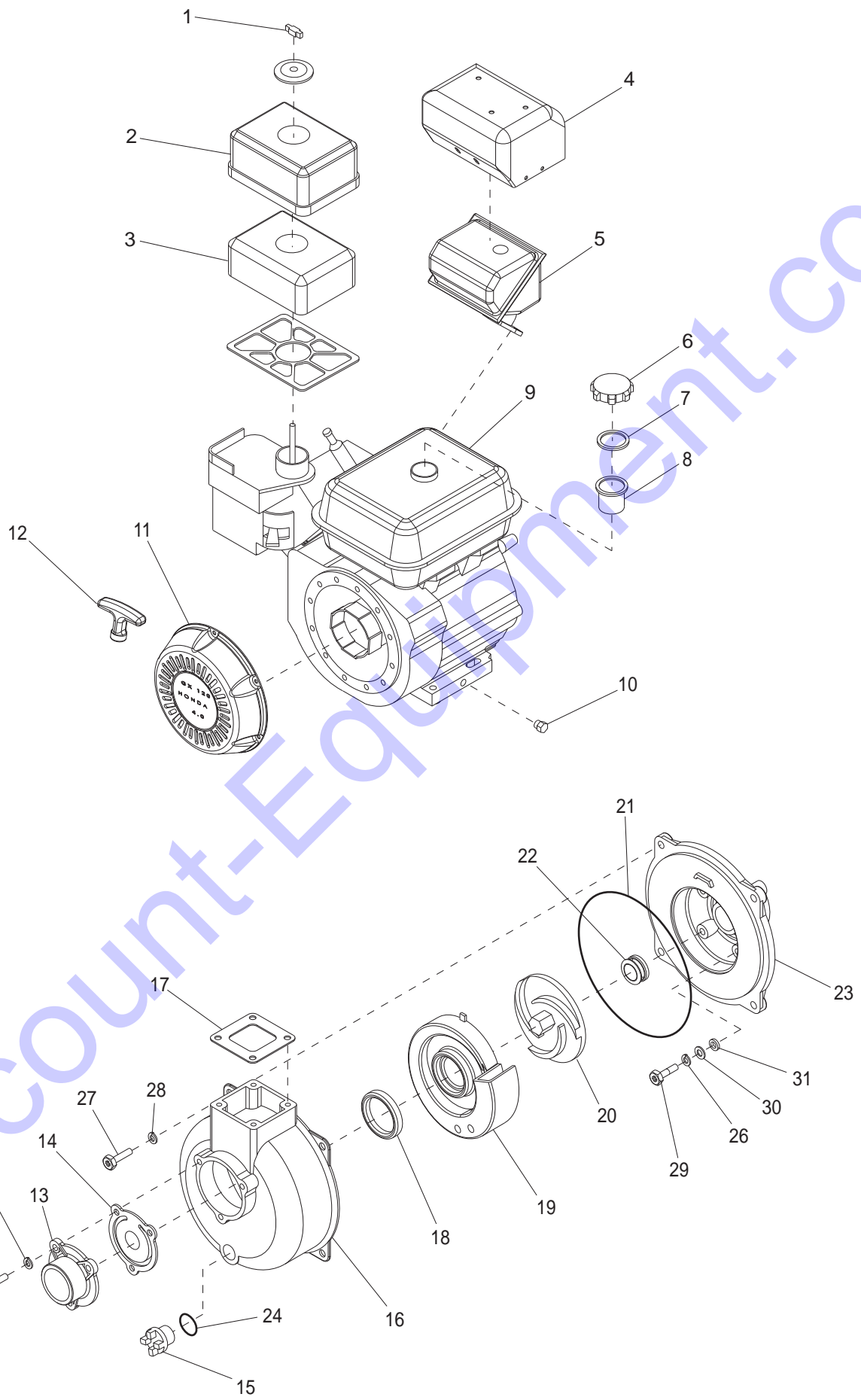
Discount-Equipment.com

ENGINE AND PUMP COMPONENTS



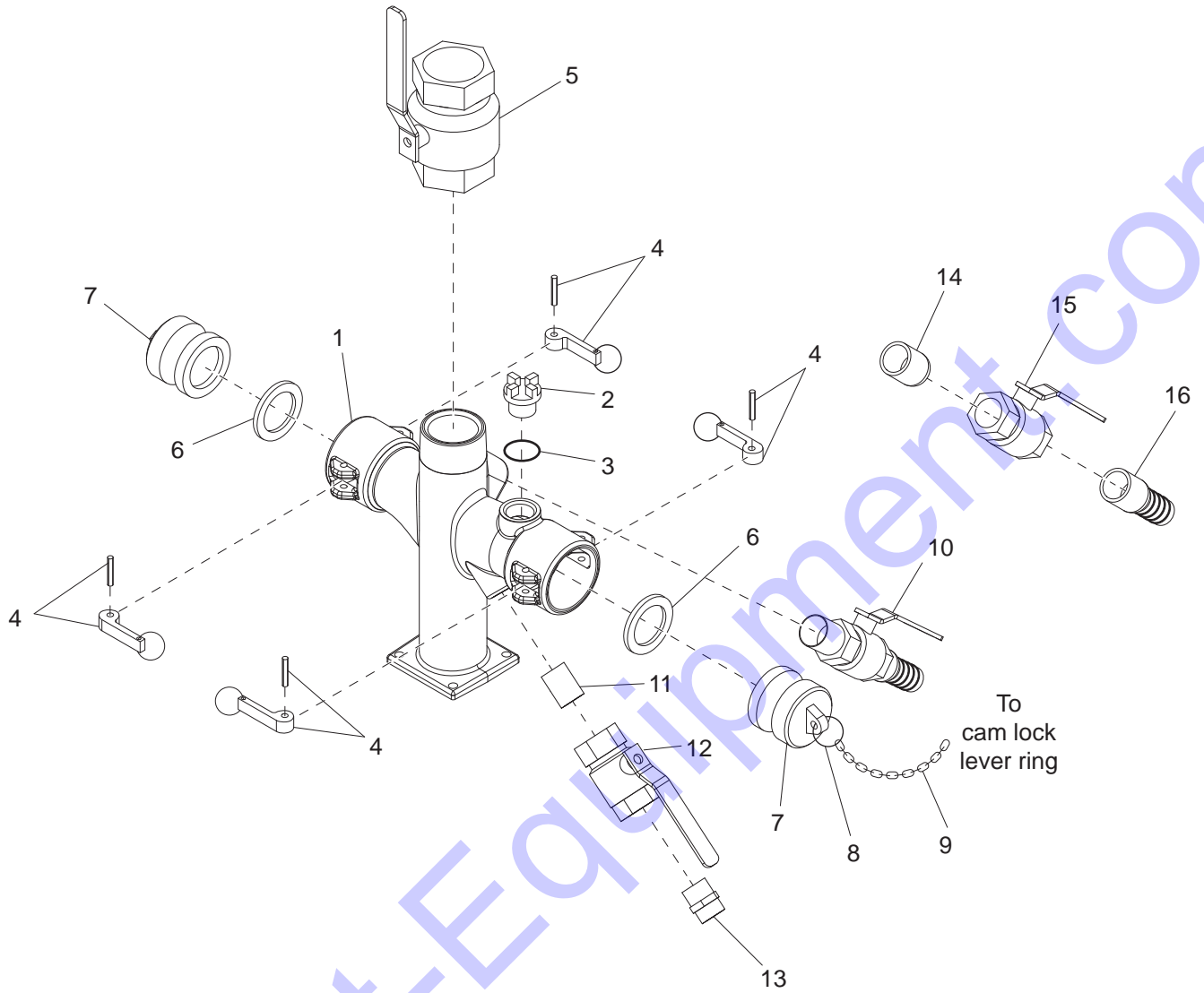
ITEM	PART	QTY	DESCRIPTION	NOTES
1	41162	1	Assembly, pump/engine	Page 10
2	42020B	1	Bracket, mounting	
--	40784B	1	Bracket, support	Before SN 085026
3	60534	4	Screw, .312-18x1.750 sflg hex	
4	60119	4	Washer, .312 flat .875/.070	
5	60271	4	Washer, .312 split lock	
6	60285	4	Nut, .312-18 hex, G2	
7	15241	4	Isolator, rubber 80-200lbs 2" wide	
8	60275	4	Screw, .500-13x1.00 std hx, G5	
9	60276	4	Washer, .500 split lock	
10	42603B	2	Bracket, pump support	
11	60028	2	Screw, .312-18x1.00 std hex, G5	
12	60119	4	Washer, .312 flat .875/.070	
13	60303	2	Nut, .312-18 nylock, G2	
14	60363	2	Screw, M10-1.50 x 50 std hex, G8.8	
15	60026	4	Washer, M10 split lock	
16	60027	2	Washer, M10 flat	
17	60033	2	Nut, M10-1.50 hex, G8.8	
18	42638	1	Assembly, manifold discharge	Pages 12
19	60160	4	Screw, M8-1.25x30 sflg hex, G8.8	
20	40687	1	Discharge flange, gasket	
21	42097B	1	Weldment, fill pipe	After SN 085025
22	41379	1	Fitting, 45 - 2.00FNPT x 2.00FNPT PVC	
23	41378	1	Fitting, strt - 2.00MNPT x 2.00 hose shank PVC	

ENGINE AND PUMP ASSEMBLY



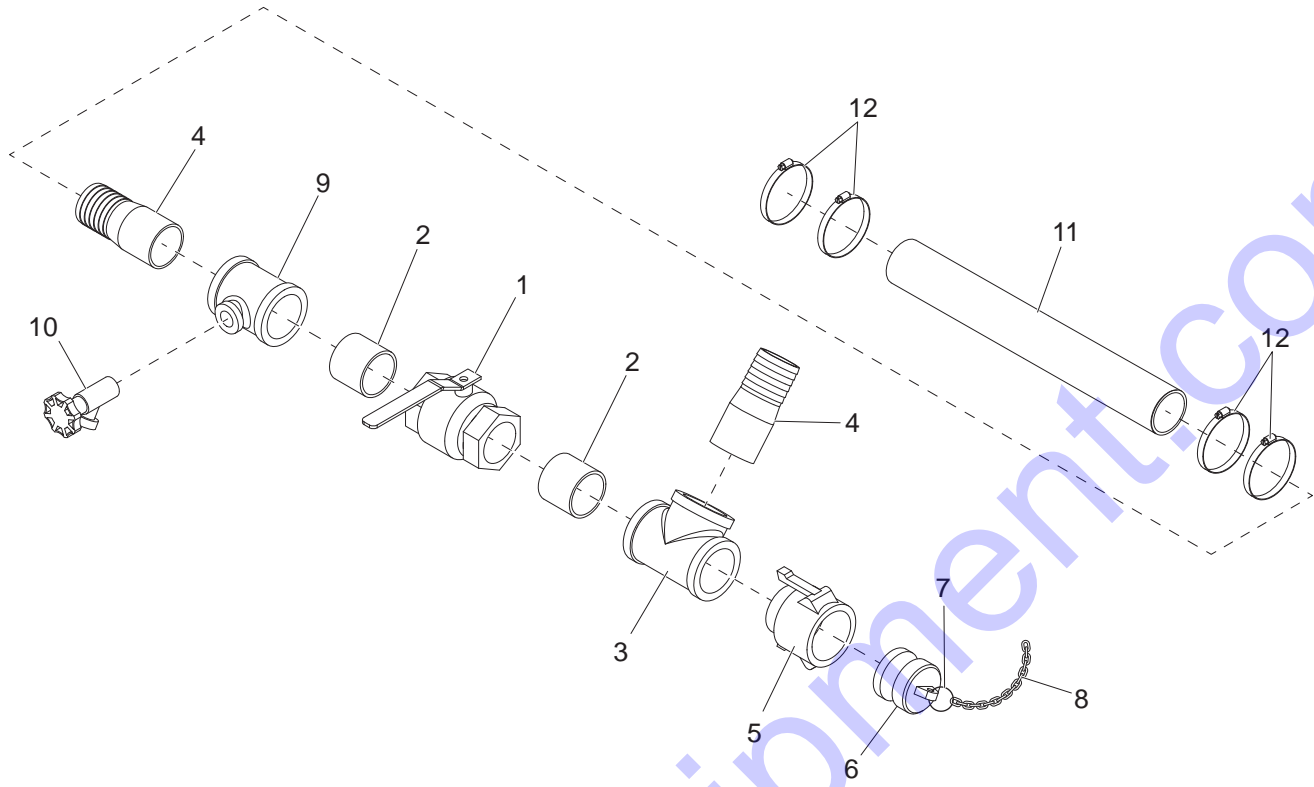
ITEM	PART	QTY	DESCRIPTION	NOTES
1	40827	1	Wingnut, air cleaner - Honda GX120	
2	40828	1	Housing, air cleaner - Honda GX120	
3	40829	1	Element, air cleaner - Honda GX120	
4	40830	1	Guard, muffler - Honda GX120	
5	40831	1	Muffler, - Honda GX120	
6	40832	1	Cap, fuel tank - Honda GX120	
7	40833	1	Gasket, tank cap - Honda GX120	
8	40834	1	Strainer, fuel tank - Honda GX120	
9	40835	1	Tank, fuel - Honda GX120	
10	40836	1	Oil plug, - Honda GX120	
11	40837	1	Starter, rewind - Honda GX120	
12	40838	1	Handle, starter rope 3 - Honda GX120	
13	40684	1	Flange, suction - Tsurumi	
14	11565	1	Valve, check - Tsurumi	
15	40688	1	Plug, pump housing - Tsurumi	With o-ring
16	40676	1	Casing, pump - Tsurumi	
17	40687	1	Gasket, discharge flange - Tsurumi	
18	40683	1	Seal, inner casing - Tsurumi	
19	40682	1	Casing, inner pump - Tsurumi	
20	40680	1	Impeller, pump - Tsurumi	
21	40677	1	O-ring, pump casing - Tsurumi	
22	40681	1	Seal, mechanical - Tsurumi	
23	40678	1	Cover, pump casing - Tsurumi	
24	40689	1	O-ring, pump plug - Tsurumi	
25	60507	3	Screw, .312-18x1.00 std hex, SS	
26	60341	7	Washer, M8 split lock, SS	
27	60177	4	Screw, M10-1.50x30 std hex, G10.9	
28	60026	4	Washer, M10 split lock	
29	40843	4	Screw, M8 x 48 1/2 thread - Tsurumi	
30	40844	4	Washer, M8 flat - Tsurumi	
31	40845	4	Seal, packing M8 washer Tsurumi	Obsolete
--	40846	1	Gasket set, valve cover - Honda GX120	Not shown
--	40847	1	Module, ignition - Honda GX120	Not shown
--	40848	1	Assembly, spark plug cap - Honda GX120	Not shown
--	40849	1	Switch, engine on/off - Honda GX120	Not shown
--	40850	1	Switch, low oil alert - Honda GX120	Not shown
--	40851	1	Plug, oil fill w/gasket - Honda GX120	Not shown
--	40852	1	Gasket set, carburetor - Honda GX120	Not shown

UPPER MANIFOLD ASSEMBLY
UNITS BUILT AFTER SN 085138



ITEM	PART	QTY	DESCRIPTION	NOTES
1	41588	1	Manifold, machined casting	
2	40688	1	Plug, pump housing	
3	40689	1	Plug, o-ring, pump	
4	41591	4	Lever, cam-lock w/ pin & ring	
5	40229	1	Valve, ball 2.00NPT - female	
6	42023	2	Gasket, cam-lock - 2.00	
7	40225	2	Fitting, strt - 2.00 plug, female cam-lock	
8	60706	2	Ring, split - 1.00, SS	
9	60707	1.3 ft	Chain, sash - #8, SS	
10	41985	1	Valve, ball .75NPTM x .75 hose barb	
11	25089	1	Fitting, nipple, pipe - .750NPT x close	
12	62006	1	Valve, ball .750NPTF	
13	40042	1	Fitting, strt .750MNPT x garden hose, brass	
--	42638	1	Assembly, manifold - discharge (upper)	Items 1-13
14	25089	1	Fitting, nipple, pipe - .750NPT x close	Before SN 085192
15	62006	1	Valve, ball .750NPTF	Before SN 085192
16	25496	1	Fitting, strt .750MNPTx1.00 barb brass	Before SN 085192

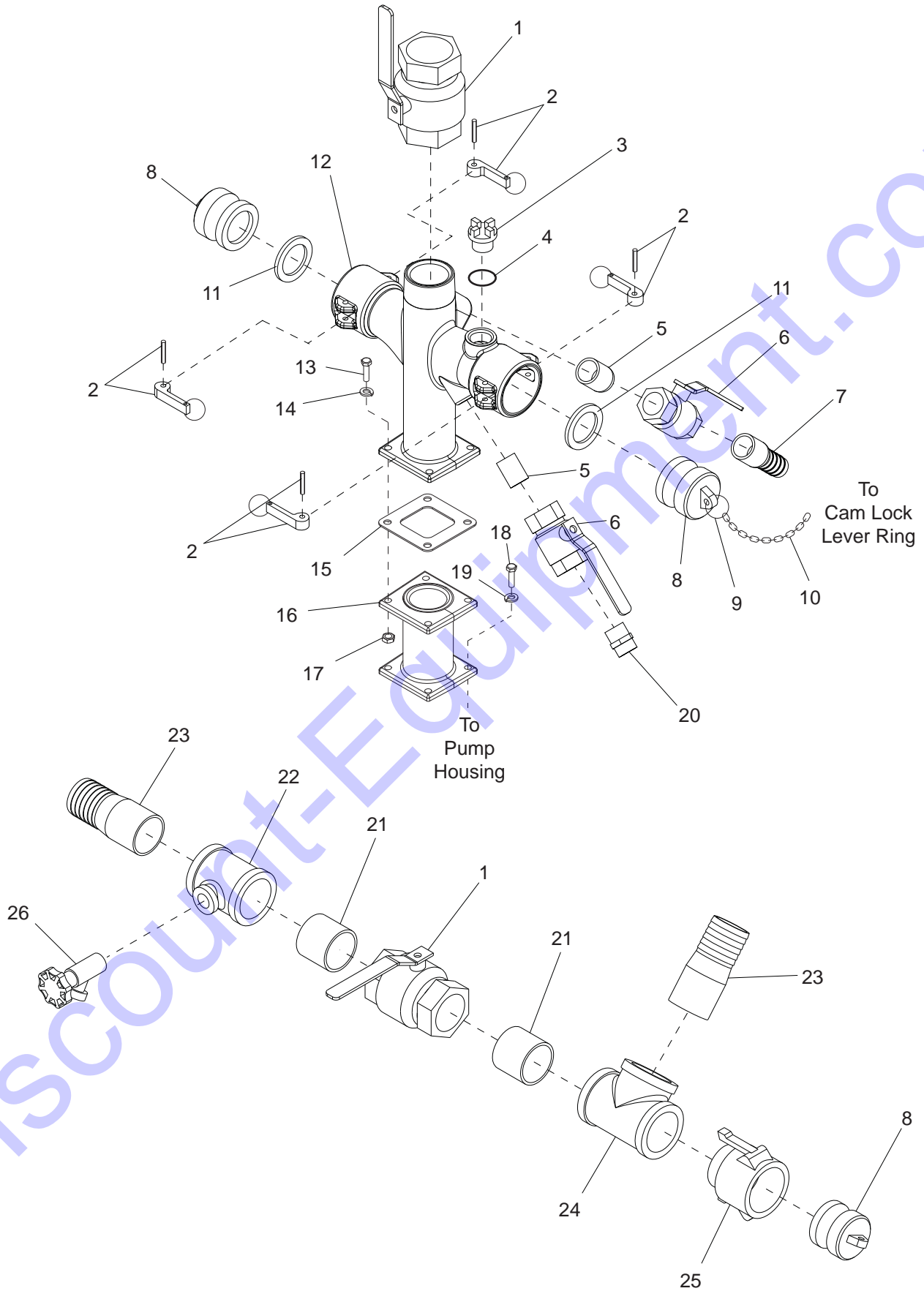
LOWER MANIFOLD ASSEMBLY
UNITS BUILT AFTER SN 085138



ITEM	PART	QTY	DESCRIPTION	NOTES
1	40229	1	Valve, ball - 2.00NPT - female	
2	21127	2	Fitting, nipple, pipe - 2.00NPT x close	
3	40330	1	Fitting, T - 2.00NPT x 2.00NPT x 2.00NPT	
4	41378	2	Fitting, str - 2.00MNPT x 2.00 hose shank	
5	40223	1	Fitting, str - 2.00MNPT x 2.00 female cam-lock	
6	40225	1	Fitting, str - 2.00 plug for female cam-lock	
7	60706	1	Ring, split - 1.00 SS	
8	60707	1.7 ft	Chain, sash - no. 8 SS	
9	40227	1	Fitting, T - 2.00NPT x 2.00NPT x .750NPT	
10	40234	1	Fitting, faucet .750NPT	
11	49786	19.5 in	Hose, water - 2.00 dia. x 19.50	
12	60316	4	Clamp, hose - SAE 032 (1.56-2.50)	
--	40778	1	Assembly, manifold suction (lower)	Items 1-12

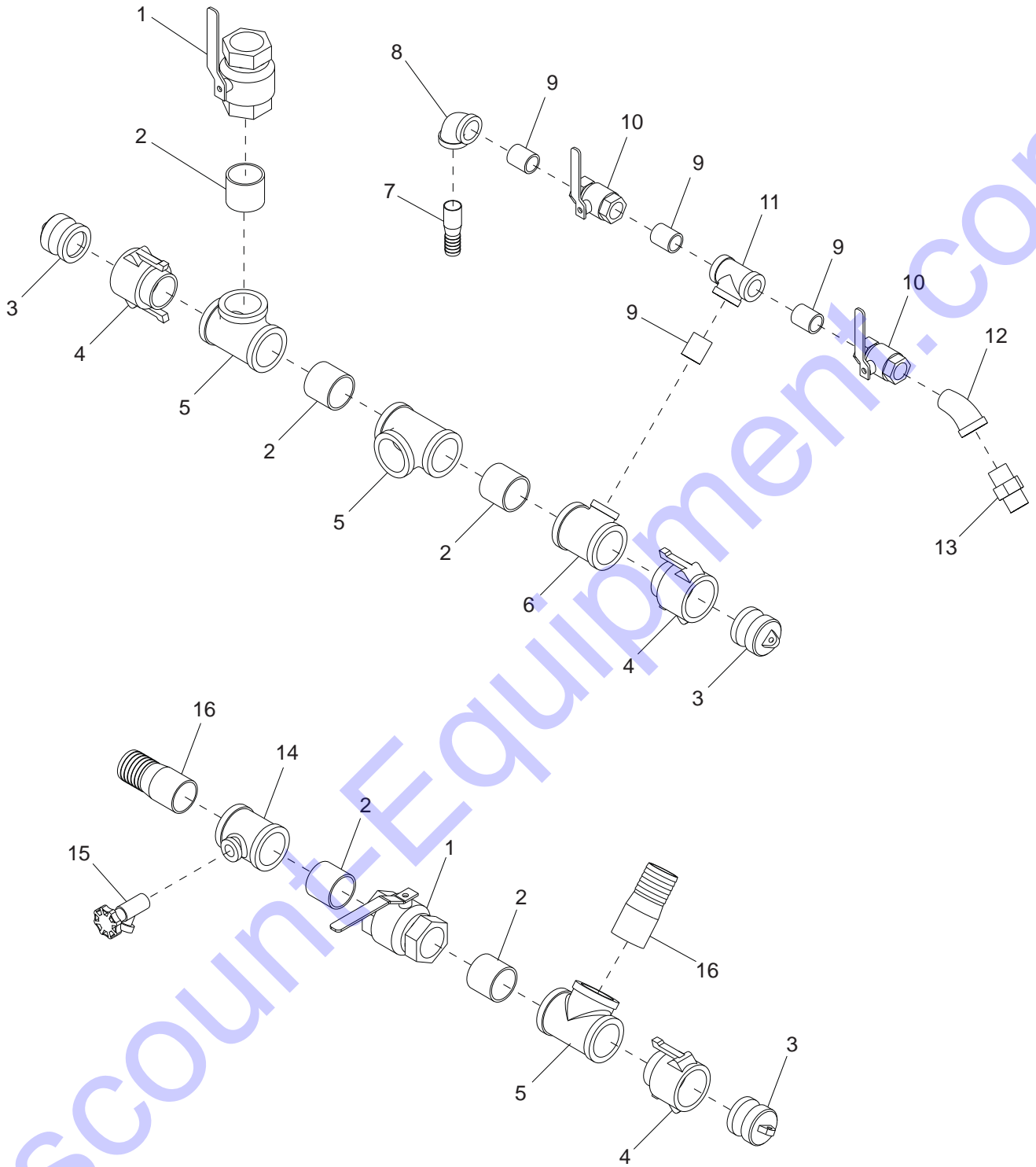
Discount-Equipment.com

UPPER AND LOWER MANIFOLD ASSEMBLIES
UNITS BUILT AS SN 085026 to SN 085138



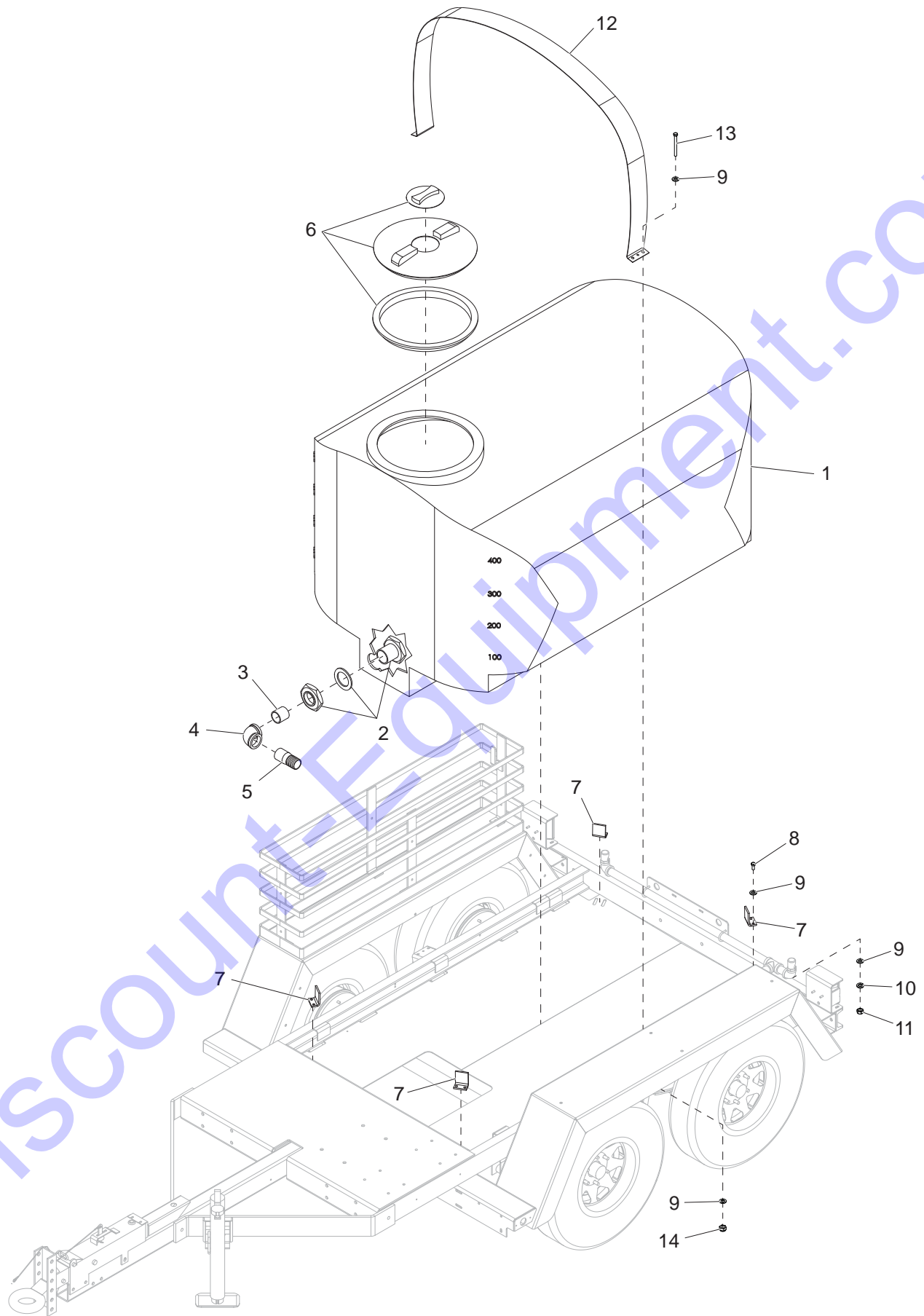
ITEM	PART	QTY	DESCRIPTION	NOTES
1	40229	2	Valve, ball - 2.00NPT	
2	41591	4	Lever, cam-lock w/ pin & ring	
3	40688	1	Plug, pump housing - Tsurumi	With o-ring
4	40689	1	O-ring, pump plug - Tsurumi	
5	25089	2	Fitting, nipple, pipe - .750NPT x close	
6	62006	2	Valve, ball .750NPTF	
7	25496	1	Fitting, strt - .750MNPT x 1.00 barb	
8	40225	3	Fitting, strt - 2.00 plug for female cam-lock	
9	60706	2	Ring, split - 1.00 SS	
10	60707	2	Chain, sash - no. 8 SS	
11	42023	2	Gasket, cam-lock - 2.00	
12	41588	1	Manifold, machined casting	
13	60256	4	Screw, .312-18x1.500 std hex full thread	
14	60271	4	Washer, .312 split lock	
15	40687	2	Gasket, discharge flange	
16	42114Z	1	Weldment, manifold extension	
17	60285	4	Nut, .312-18 hex, G2	
18	60507	4	Screw, .312-18x1.00 std hex, SS	
19	60341	4	Washer, M8 split lock SS	
20	40042	1	Fitting, strt .750MNPT x garden hose brass	
21	21127	2	Fitting, nipple, pipe - 2.00NPT x close	
22	40227	1	Fitting, T - 2.00NPT x 2.00NPT x .750NPT	
23	41378	2	Fitting, strt - 2.00MNPT x 2.00 hose shank PVC	
24	40330	1	Fitting, T - 2.00NPT x 2.00NPT x 2.000NPT	
25	40223	1	Fitting, strt - 2.00MNPT x 2.00 female cam-lock	
26	40234	1	Fitting, faucet .750NPT	
--	42019	1	Assembly, manifold discharge (upper)	
--	40778	1	Assembly, manifold suction (lower)	

UPPER AND LOWER MANIFOLD ASSEMBLIES
UNITS BUILT PRIOR TO SN 085025



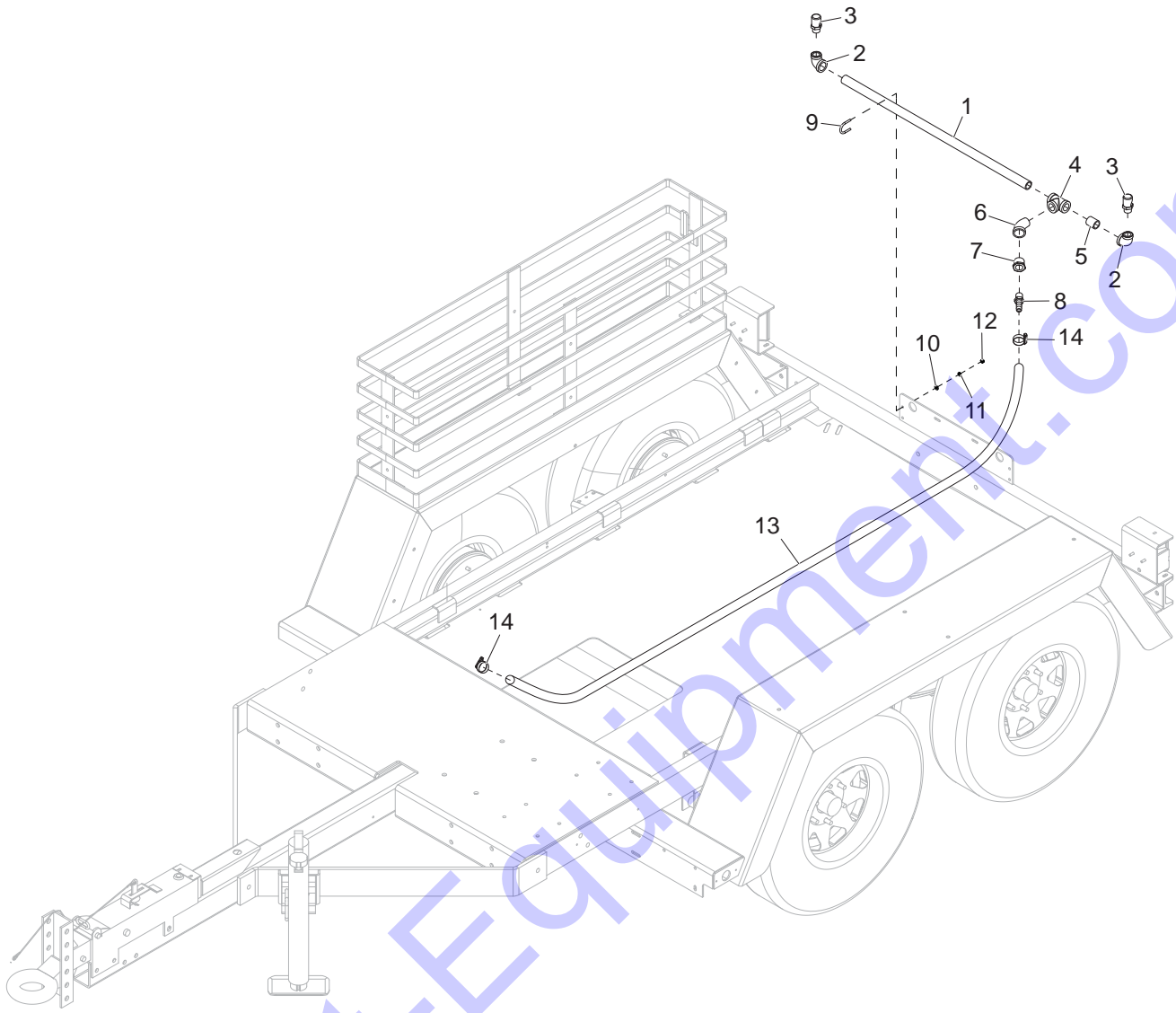
ITEM	PART	QTY	DESCRIPTION	NOTES
1	40229	2	Valve, ball - 2.00NPT - female	
2	21127	5	Fitting, nipple, pipe - 2.00NPT x close	
3	40225	3	Fitting, strt - 2.00 plug - female cam-lock	
4	40223	3	Fitting, strt - 2.00MNPT x 2.00 female cam-lock	
5	40330	2	Fitting, T - 2.00NPT x 2.00NPT x 2.00NPT	
6	40228	1	Fitting, T - 2.00NPT x 2.00NPT x 1.00NPT	
7	21451	1	Fitting, strt - 1.00MNPT x 1.00 barb	
8	40814	1	Fitting, 90° - 1.00NPT	
9	40276	5	Fitting, nipple, pipe 1.00NPT x close	
10	40230	2	Valve, ball - 1.00NPT - female	
11	40231	1	Fitting, T - 1.00NPT x 1.00NPT x 1.00NPT	
12	40794	1	Fitting, 45° - 1.00MNPT x 1.00FNPT	
13	40798	1	Fitting, strt - 1.00MNPT x garden hose	
14	40227	1	Fitting, T - 2.00NPT x 2.00NPT x .75NPT	
15	40234	1	Fitting, faucet - .75NPT brass	
16	41378	2	Fitting, strt - 2.00MNPT x 2.00 hose shank	
--	40779	1	Assembly, manifold discharge (upper)	
--	40778	1	Assembly, manifold suction (lower)	

TANK ASSEMBLY



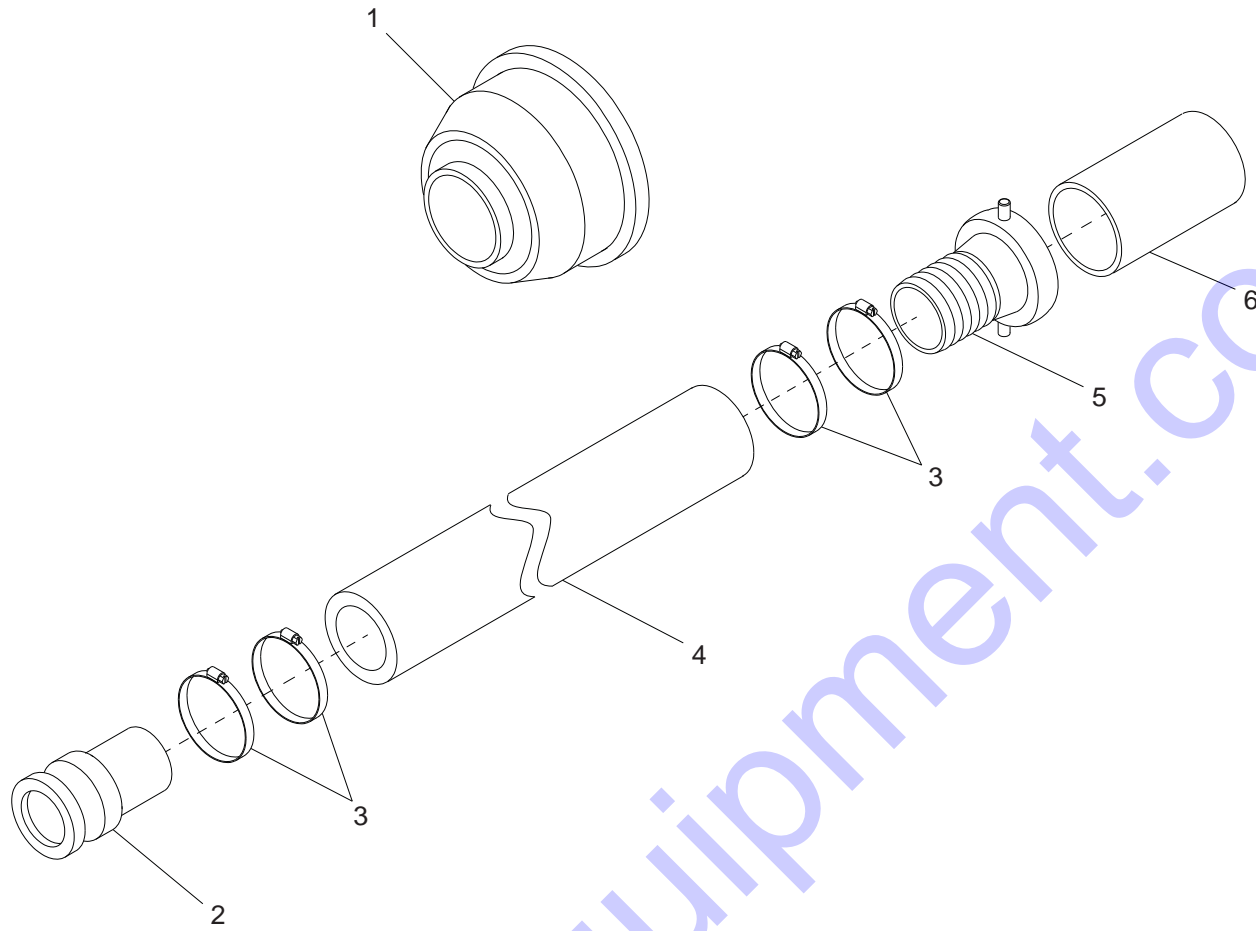
ITEM	PART	QTY	DESCRIPTION	NOTES
1	40768	1	Tank, water - 500 gallon (white)	
2	40740	1	Fitting, bulkhead - 2.00NPT poly	
3	21127	1	Fitting, nipple, pipe - 2.00NPT x close	
4	40226	1	Fitting, 90° - 2.00NPT	
5	41378	1	Fitting, strt - 2.00MNPT x 2.00 hose shank PVC	
6	40756	1	Cover, water tank - 16.00	
7	40862B	4	Bracket, tank support	
8	60205	8	Screw, .375-16x1.00 std hex, G5	
9	60386	24	Washer, .375 flat .993/.064	
10	60206	8	Washer, .375 split lock	
11	60140	8	Nut, .375-16 hex, G5	
12	30779B	1	Weldment, tank strap	
13	60360	4	Screw, .375-16x4.00 std hex, G5	
14	60358	4	Nut, .375-16 nylock, G5	
--	40805	1	Assembly, 500 gallon tank	Items 1-6

SPRAY BAR ASSEMBLY



ITEM	PART	QTY	DESCRIPTION	NOTES
1	40793	1	Fitting, nipple, pipe - 1.00NPT x 38.00	
2	40232	2	Fitting, 90° - 1.00NPT x .750NPT	
3	40233	2	Fitting, fog nozzle - .750NPT	
4	40231	1	Fitting, T - 1.00NPT x 1.00NPT x 1.00NPT	
5	40276	1	Fitting, nipple, pipe - 1.00NPT x close	
6	40794	1	Fitting, 45° - 1.00MNPT x 1.00FNPT	
7	24006	1	Fitting, strt - 1.00MNPT x .750FNPT	
8	62025	1	Fitting, strt - .750MNPT x .750 barb	
9	63295	2	Bolt, U - .250-20x1.375x1.88	
10	60243	4	Washer, .250 flat .735/.060	
11	60286	4	Washer, .250 split lock	
12	60721	4	Nut, .250-20 acorn, G2	
--	42635	1	Assembly, spray bar	Items 1-12
13	42637	1	Hose, spray bar - .75 ID x 7ft 3in	
14	19338	2	Clamp, hose - SAE 016 (.68-1.50)	
--	42636	1	Assembly, hose spray bar - .75 hose	Items 13-14

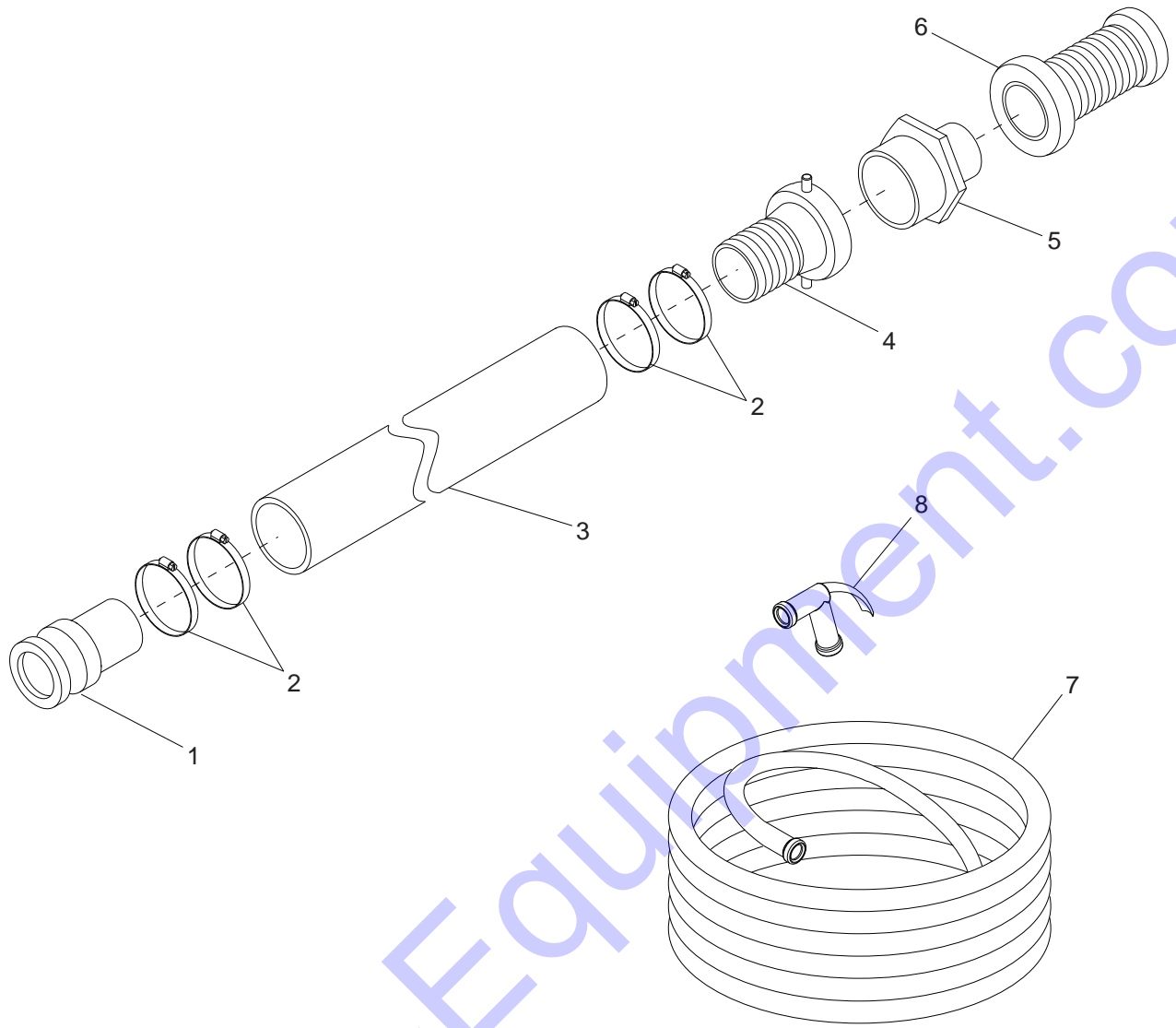
FILL HOSE ASSEMBLY



ITEM	PART	QTY	DESCRIPTION	NOTES
1	40266	1	Strainer, 2.00 suction	
2	40224	1	Fitting, strt - 2.00 hose shank x 2.00 male cam-lock	
3	60316	4	Clamp, hose - SAE 032 (1.56-2.50)	
4	40502	1	Hose, water 2.00 x 20ft	
5	40265	1	Fitting, 2.00 female swivel x 2.00 hose nipple	
6	40475	1	Fitting, nipple, pipe 2.00NPT x 2.50 PVC	
--	40264	1	Assembly, hose - 2.00 x 20ft suction	Items 1-6
--	41258	1	Hose, extension - 2.00 x 10ft suction	Option: Hose ext. - Not shown
--	41259	1	Hose, extension - 2.00 x 20ft suction	Option: Hose ext. - Not shown

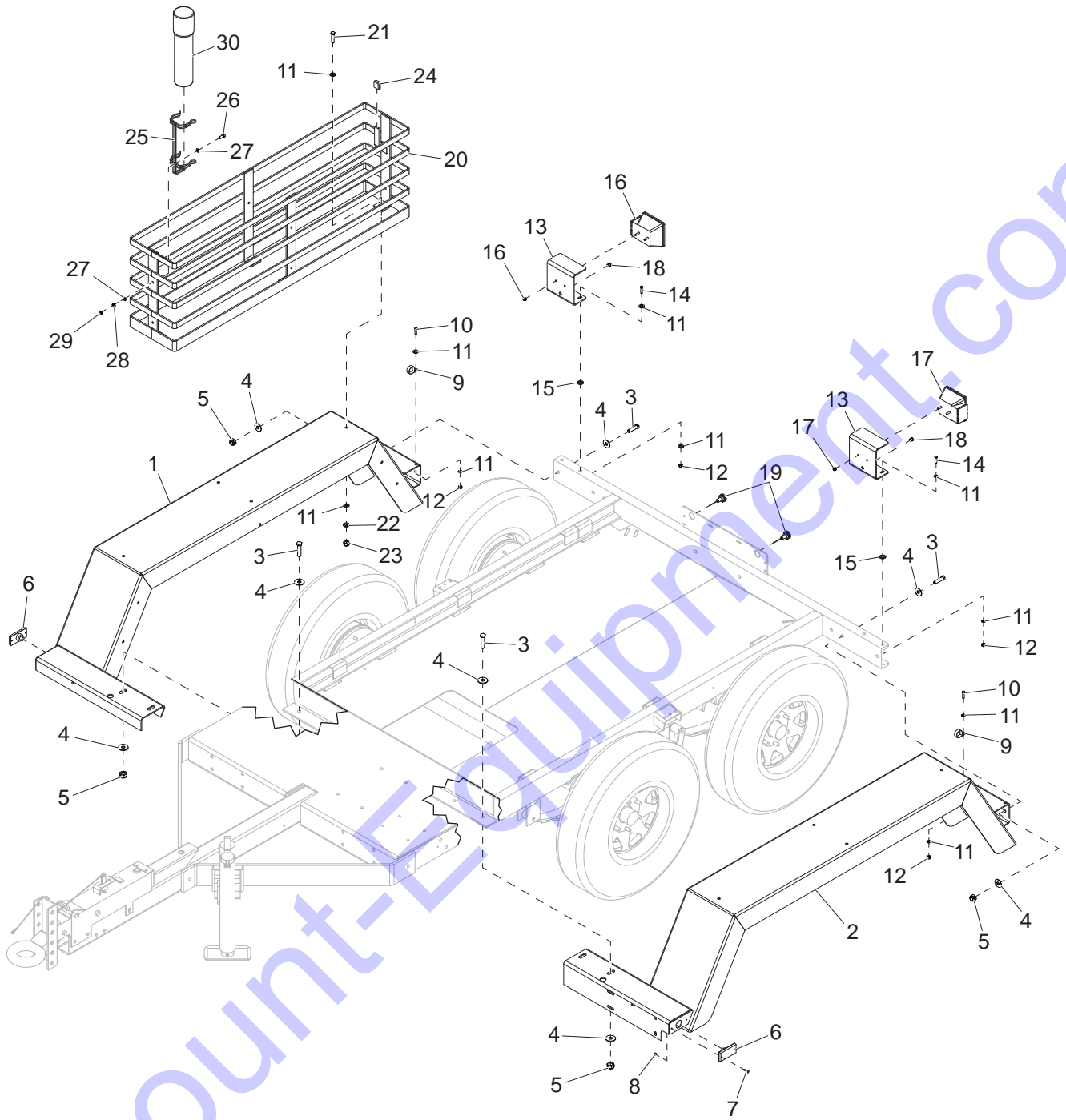
Discount-Equipment.com

DISCHARGE HOSE ASSEMBLIES



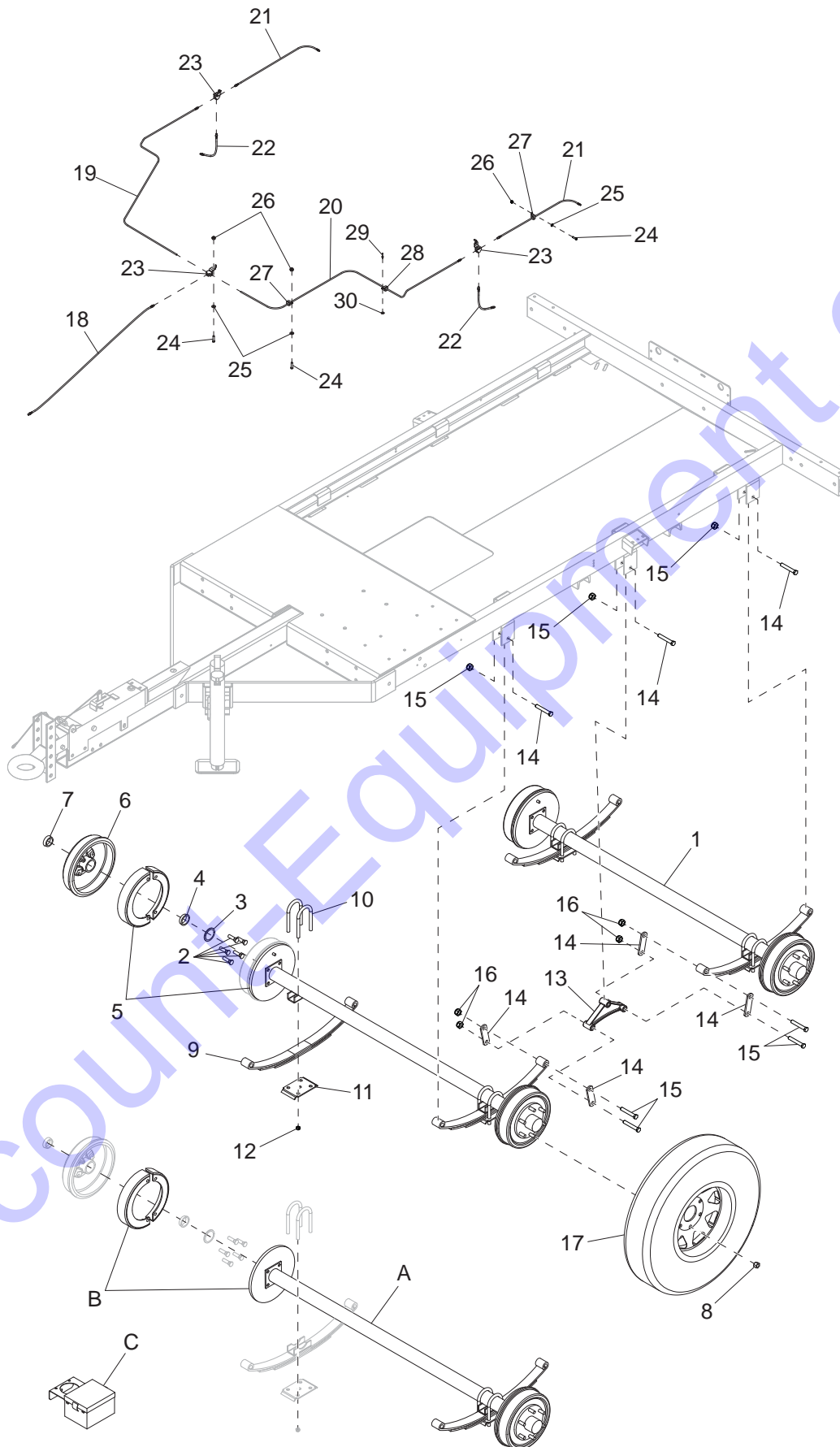
ITEM	PART	QTY	DESCRIPTION	NOTES
1	40224	1	Fitting, strt - 2.00 hose shank x 2.00 male cam-lock	
2	60316	4	Clamp, hose - SAE 032 (1.56-2.50)	
3	40505	1	Hose, water 2.00 x 25ft	
4	40265	1	Fitting, 2.00 female swivel x 2.00 hose nipple	
5	40267	1	Fitting, strt 2.00MNPT x 1.50MNPT	
6	40257	1	Nozzle, water - adjustable spray	
--	40272	1	Assembly, hose - 2.00 25ft sprayer	Items 1-6
7	40800	1	Hose, .625 x 50ft garden	
8	40256	1	Nozzle, water - garden hose	
--	40804	1	Assembly, garden hose - .625 x 50ft	Items 7-8
--	41260	1	Hose, extension - 2.00 x 25 ft sprayer	Option: Hose ext. - not shown
--	41261	1	Hose, extension - 2.00 x 50ft sprayer	Option: Hose ext. - not shown
--	41262	1	Hose, extension - 2.00 x 75ft sprayer	Option: Hose ext. - not shown
--	40266	1	Strainer, suction - 2.00	Option: Strainer - not shown

FENDER COMPONENTS



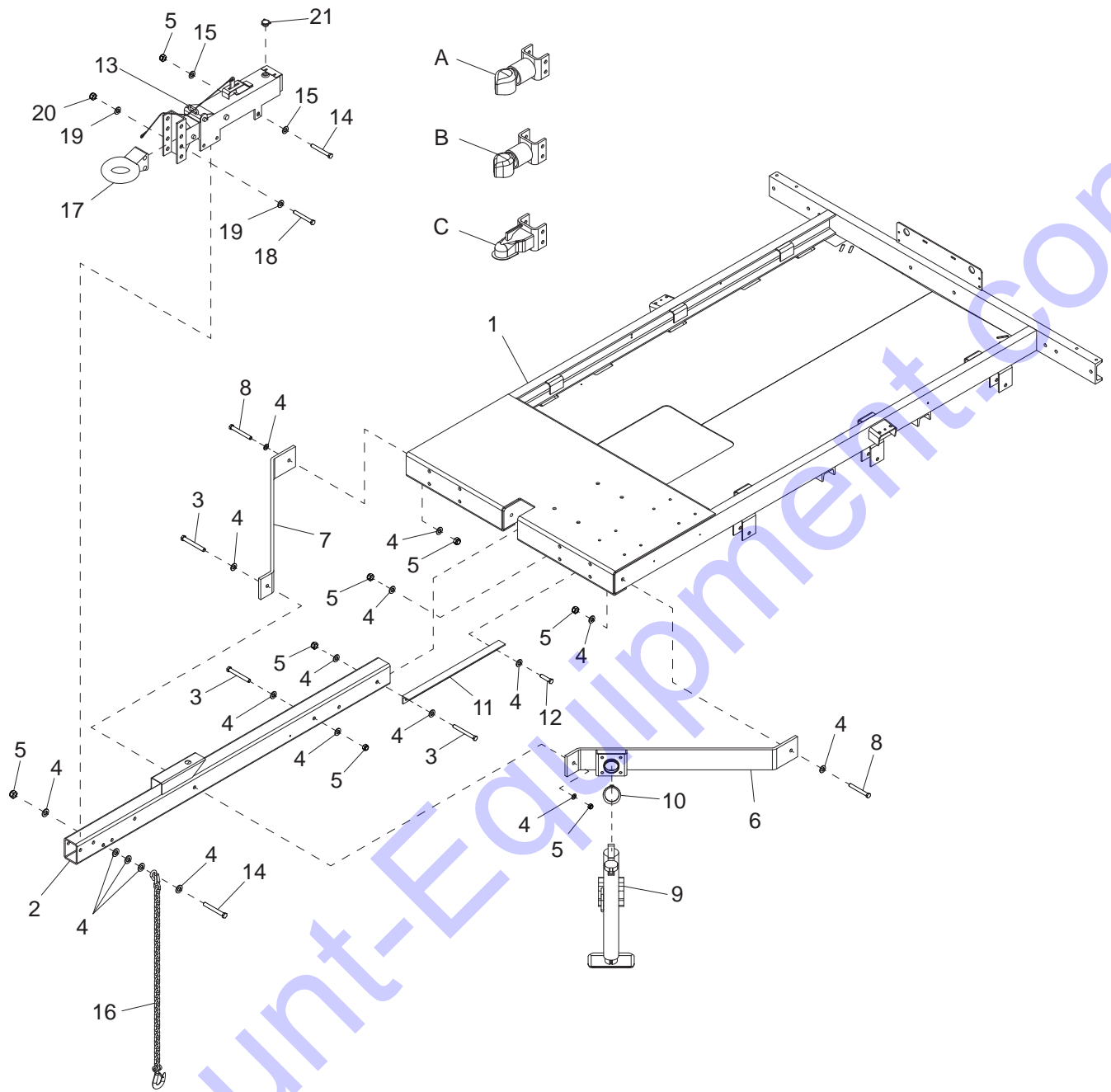
ITEM	PART	QTY	DESCRIPTION	NOTES
1	40774B	1	Weldment, fender, water trailer - RH	
2	40775B	1	Weldment, fender, water trailer - LH	
3	60388	8	Screw, .500-13x1.500 std hex, G5	Add to BOM
4	60416	16	Washer, .500 flat 1.375/.090	
5	62221	8	Nut, .500-13 nylock, G5	
6	66373	2	Lens, amber - light, clearance marker	
--	65661	2	Bulb, light - clearance marker	
7	60406	4	Screw, 8-32x1.00 pan phil, G2	
8	60270	4	Nut, 8-32 nylock	
9	60649	2	Clamp, tubing - .750 heavy duty	
10	60028	2	Screw, .312-18x1.00 hx hd, G5	
11	60119	20	Washer, .312 flat .875/.070	
12	60303	6	Nut, .312-18 nylock, G2	
13	40776B	2	Bracket, tail light	
14	62001	4	Screw, .312-18x1.250 std hex, G5	
15	60293	4	Washer, .312 ext star	
16	65448	1	Light, stop/turn/tail waterproof - RH	
17	65449	1	Light, stop/turn/tail waterproof - LH	
18	19163	2	Fitting, bushing, .500 OD x .375 ID	
19	19207	2	Light, license plate/panel - round eye	
20	30736B	1	Weldment, hose storage	
21	60205	4	Screw, .375-16x1.00 hex hd, G5	
22	60206	4	Washer, .375 split lock	
23	60140	4	Nut, .375-16 hex hd, G5	Add to BOM
24	60793	1	Cap, rubber - .25x1.00x1.00	
25	11222	1	Bracket, manual holder	
26	60684	2	Screw, .250-20x.875 hx hd, SS	
27	60243	4	Washer, .250 flat .735/.060	Add to BOM
28	60286	2	Washer, .250 split lock	
29	60721	2	Nut, .250-20 acorn, G2	
30	11121	1	Tube, manual holder - black 14"	

AXLES TO SKID



ITEM	PART	QTY	DESCRIPTION	NOTES
1	40769	2	Axle, tandem hyd 3500 lbs	
2	60674	6	Stud, wheel - .500-20, G8	
3	12307	1	Seal, axle bearing	
4	40954	1	Bearing, inner axle	
--	40955	1	Bearing, race - inner axle	
5	40764	2	Brake assy - 10" surge free-backing LH	
--	40765	2	Brake assy - 10" surge free-backing RH	
6	40958	1	Hub/brake drum 3500 lbs	
7	40956	1	Bearing, axle outer	
--	40957	1	Bearing, race- outer axle	
8	60096	24	Nut, .500-20 lug, G5	
9	11280	1	Spring, leaf - 3500# axle	
10	11277	2	Bolt, U - 3500 lbs	
11	40874	1	Plate, tie - axle	
12	26441	4	Nut, u-bolt 1/2-20 plated	
13	41302	2	Equalizer, tandem axle - 7.750 centers	
14	19637	8	Plate, .3125 - shackle bracket	
15	60503	14	Screw, .562-18x3.00 std hx shackle, G5	
16	60504	14	Nut, .562-18 lock, G5	
--	40856	1	Axle kit - tandem hydraulic - 3500 lbs	Items 1-16
17	19786	4	Wheel, ST225/75D15, bias ply	
18	40819	1	Hose, brake - .188 x 60.00 male/male	
19	40858	1	Brake line, formed RH	
20	40857	1	Brake line, formed LH	
21	40817	2	Hose, brake - .188 x 33.00 male/male	
22	40818	2	Hose, brake - .188 x 12.00 male/male	
23	19252	3	Fitting, T - .188 brake line - w/bracket	
24	60684	5	Screw, .250-20x.875 std hex, SS	
25	60166	5	Washer, M8 flat	
26	60144	5	Nut, .250-20 nylock, G5	
27	15626	4	Clamp, tubing - .375 lt duty	
28	60375	2	Clamp, tubing - .312 lt duty	
29	60231	2	Rivet, .188 dia. x .375 to .500 grip range	
30	60041	2	Washer, M5 flat	
--	12460	1	Cap, wheel bearing	
--	12463	1	Brake cylinder, right	
--	12462	1	Brake cylinder, left	
A	40855	1	Axle, tandem elec 3500 lbs 45SC 65TC	Option: Electric brakes
B	26442	1	Assembly, electric brake 10" kit LH	Option: Electric brakes
--	26443	1	Assembly, electric brake 10" kit RH	Option: Electric brakes
C	19417	1	Breakaway kit	Option: Electric brakes

FRAME COMPONENTS



ITEM	PART	QTY	DESCRIPTION	NOTES
1	40946B	1	Weldment, water trailer chassis	Pivoting tongue
--	41598B	1	Weldment, water trailer chassis	Pivoting tongue racking
2	40953B	1	Weldment, tongue - water trailer	
--	41600B	1	Weldment, tongue - racked	
3	60659	5	Screw, .500-13x5.00 std hx, G5	
4	60416	22	Washer, .500 flat 1.375/.090	
5	62221	12	Nut, .500-13 nylock, G5	
6	40944B	1	Weldment, tongue brace	
7	40945B	1	Tongue brace	
8	60484	2	Screw, .500-13x2.00 std hx, G5	
9	11682	1	Jack, top wind - 2000 lbs	
10	14326	1	Ring, retaining	
11	40947B	1	Angle, shipping support	
12	60388	1	Screw, .500-13x1.500 std hex, G5	
13	40529	1	Actuator, hyd. surge brake - 7500 lbs	Adjustable
14	60376	5	Screw, .500-13x4.50 std hex, G5	
15	60309	6	Washer, .500 flat 1.060/.090	
16	23367	2	Chain, safety - 7,800 lbs rated	
17	19335B	1	Coupler, lunette ring - 3.00 ID	Adjustable, 20,000 lbs
18	60239	2	Screw, .625-11x5.00 std hx, G5	
19	60180	4	Washer, .625 flat 1.750/.10-.16	
20	60240	2	Nut, .625-11 nylock, G5	
21	30248	1	Cap, actuator, sealed	
A	41794	1	Coupler, 2.00 ball adjustable 7000 lbs	Option: 2" ball
B	41795	1	Coupler, 2.31 ball adjustable 12500 lbs	Option: Bulldog hitch
C	19519	1	Coupler, 2.31 ball for adjustable hitch	Option: Adjustable hitch

RECOMMENDED SPARE PARTS LIST

ENGINE

Element, air cleaner - Honda GX120.....	40829
Cap, fuel tank - Honda GX120	40832
Gasket, tank cap - Honda GX120.....	40833
Starter, rewind - Honda GX120.....	40837

Pump

Gasket, discharge flange - Tsurumi	40687
Casing, pump - Tsurumi.....	40676
O-ring, pump casing - Tsurumi	40677
Plug, pump housing - Tsurumi (with o-ring).....	40688
O-ring, pump plug - Tsurumi	40689
Impeller, pump - Tsurumi	40680
Seal, inner casing - Tsurumi	40683
Seal, mechanical - Tsurumi	40681
Valve, check - Tsurumi.....	11565

Tank

Cover, water tank - 16.00	40756
---------------------------------	-------

Discount Equipment

Discount-Equipment.com is your online resource for commercial and industrial quality parts and equipment sales.

Locations:

Florida (West Palm Beach): [561-964-4949](tel:561-964-4949)

Outside Florida TOLL FREE: [877-690-3101](tel:877-690-3101)

Need parts? Check out our website at www.discount-equipment.com

Can't find what you need?

Click on this link: <http://www.discount-equipment.com/category/5443-parts/> and fill out the request form.

Please have the machine model and serial number available in order to help us get you the correct parts. One of our experienced staff members will get back to you with a quote for the right part that your machine needs.

We sell worldwide for the brands: Genie, Terex, JLG, MultiQuip, Mayco, Toro/Stone, Diamond Products, Magnum, Airman, Mustang, Power Blanket, Nifty Lift, Atlas Copco, Chicago Pneumatic, Allmand Brothers, Essick, Miller Spreader, Skyjack, Lull, Skytrak, Tsurumi, Husquvarna/Target, Whiteman-Concrete/Mortar, Stow-Concrete/Mortar, Baldor, Wacker, Sakai, Snorkel, Upright, Mi-T-M, Sullair, Neal, Basic, Dynapac, MBW, Weber, Bartell, Bennar Newman, Haulotte, Ditch Runner, Blaw-Knox, Himoinsa, Best, Buddy, Crown, Edco, Wyco, Bomag, Laymor, Terremite, Barreto, EZ Trench, Takeuchi, Basic, Bil-Jax, Curtis, Gehl, Heli, Honda, ICS/PowerGrit, Puckett, Waldon, ASV, IHI, Partner, Imer, Clipper, MMD, Koshin, Rice, Gorman Rupp, CH&E, Cat Pumps, Comet, General Pump, Giant, AMida, Coleman, NAC, Gradall, Square Shooter, Kent, Stanley, Tamco, Toku, Hatz, Kohler, Robin, Wisconsin, Northrock, Oztec, Toker TK, Rol-Air, Small Line, Wanco, Yanmar

New Equipment - Used Equipment - Rental Equipment - Parts and Accessories

Discount Equipment

www.discount-equipment.com

561-964-4949

Sales: info@Discount-Equipment.com

Parts: wbparts@Discount-Equipment.com



www.discount-equipment.com

REV: C
PART NO: 13958
03.25.14