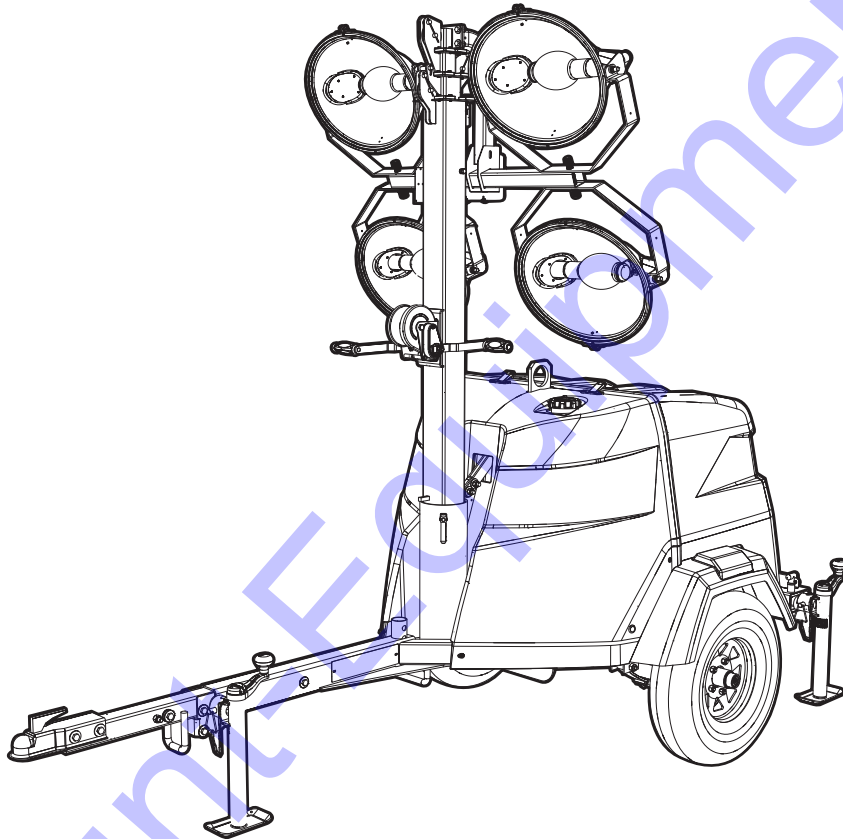


MLT6SC

Light Tower Parts Manual



02449

MODEL NUMBER: _____

SERIAL NUMBER: _____

DATE PURCHASED: _____

SAVE THIS MANUAL FOR FUTURE REFERENCE

Discount Equipment

Discount-Equipment.com is your online resource for commercial and industrial quality parts and equipment sales.

Locations:

Florida (West Palm Beach): [561-964-4949](tel:561-964-4949)

Outside Florida TOLL FREE: [877-690-3101](tel:877-690-3101)

Need parts? Check out our website at www.discount-equipment.com

Can't find what you need?

Click on this link: <http://www.discount-equipment.com/category/5443-parts/> and fill out the request form.

Please have the machine model and serial number available in order to help us get you the correct parts. One of our experienced staff members will get back to you with a quote for the right part that your machine needs.

We sell worldwide for the brands: Genie, Terex, JLG, MultiQuip, Mayco, Toro/Stone, Diamond Products, Magnum, Airman, Mustang, Power Blanket, Nifty Lift, Atlas Copco, Chicago Pneumatic, Allmand Brothers, Essick, Miller Spreader, Skyjack, Lull, Skytrak, Tsurumi, Husquvarna/Target, Whiteman-Concrete/Mortar, Stow-Concrete/Mortar, Baldor, Wacker, Sakai, Snorkel, Upright, Mi-T-M, Sullair, Neal, Basic, Dynapac, MBW, Weber, Bartell, Bennar Newman, Haulotte, Ditch Runner, Blaw-Knox, Himoina, Best, Buddy, Crown, Edco, Wyco, Bomag, Laymor, Terremite, Barreto, EZ Trench, Takeuchi, Basic, Bil-Jax, Curtis, Gehl, Heli, Honda, ICS/PowerGrit, Puckett, Waldon, ASV, IHI, Partner, Imer, Clipper, MMD, Koshin, Rice, Gorman Rupp, CH&E, Cat Pumps, Comet, General Pump, Giant, AMida, Coleman, NAC, Gradall, Square Shooter, Kent, Stanley, Tamco, Toku, Hatz, Kohler, Robin, Wisconsin, Northrock, Oztec, Toker TK, Rol-Air, Small Line, Wanco, Yanmar

New Equipment - Used Equipment - Rental Equipment - Parts and Accessories

Discount Equipment

www.discount-equipment.com

561-964-4949

Parts: wbparts@Discount-Equipment.com

Sales: info@Discount-Equipment.com

⚠ WARNING

Operating, servicing and maintaining this equipment can expose you to chemicals including engine exhaust, carbon monoxide, phthalates, and lead, which are known to the State of California to cause cancer and birth defects or other reproductive harm. To minimize exposure, avoid breathing exhaust, do not idle the engine except as necessary, service your equipment in a well-ventilated area and wear gloves or wash your hands frequently when servicing your equipment. For more information go to www.P65Warnings.ca.gov. (000393)

⚠ WARNING

Breathing diesel engine exhaust exposes you to chemicals known to the State of California to cause cancer and birth defects or other reproductive harm.

- Always start and operate the engine in a well-ventilated area.
- If in an enclosed area, vent the exhaust to the outside.
- Do not modify or tamper with the exhaust system.
- Do not idle the engine except as necessary.

For more information go to www.P65Warnings.ca.gov/diesel. (000394)

⚠ WARNING

Environmental Hazard. Always recycle batteries at an official recycling center in accordance with all local laws and regulations. Failure to do so could result in environmental damage, death or serious injury. (000228)

Introduction

This parts manual was prepared based on the information available at the time of publication and is subject to change without notice. Generac Mobile Products reserves the right to change parts at any time. To check whether a revised parts manual is available, contact Generac Mobile Products.

DO NOT MODIFY or use this equipment for any application other than which it was designed for. To keep your equipment fully operational, it is suggested you maintain a stock of commonly used maintenance or service parts. A recommended spare parts list can be found in the back of this manual.



⚠WARNING

Consult Manual. Read and understand manual completely before using product. Failure to completely understand manual and product could result in death or serious injury. (000100a)

Table of Contents

Introduction	iii
Parts Manual Instructions	1
Unit Decals - Front, Rear and Top	2
Unit Decals - Left and Right Sides	4
Unit Decals - Inside Unit	6
Mast, Junction Box and Lights to Unit	8
Light Assembly	10
Mast Junction Box Assembly	12
Mast Assembly	14
Mast Assembly - Bottom Post - Manual Winch	16
Mast Assembly - Bottom Post - Electric Winch	18
Enclosure Assembly (1 of 2)	20
Enclosure Assembly (2 of 2)	22
Control Box Assembly	24
Control Box Assembly - Powerzone Option (1 of 2)	26
Control Box Assembly - Powerzone Option (2 of 2)	28
Cooling System Assembly	30
Engine Assembly (1 of 2)	32
Engine Assembly (2 of 2)	34
Generator Assembly	36
Components to Trailer Assembly	38
Trailer Assembly	40
Recommended Spare Parts - Engine and Service Kits	42
Recommended Spare Parts - Electrical	44
Recommended Spare Parts - Misc	46

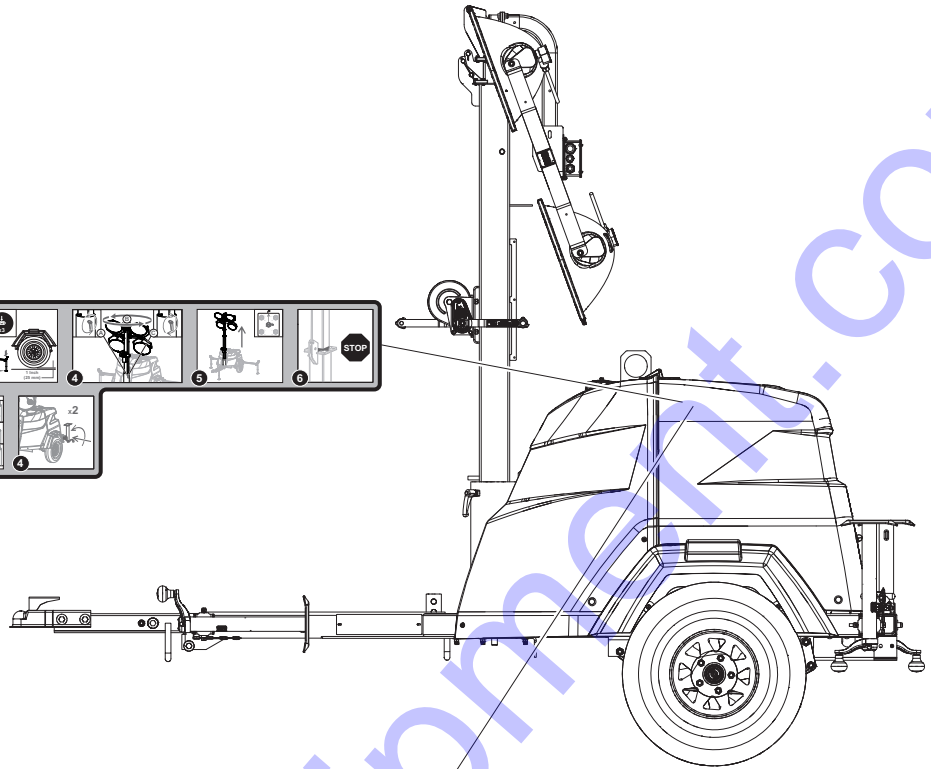
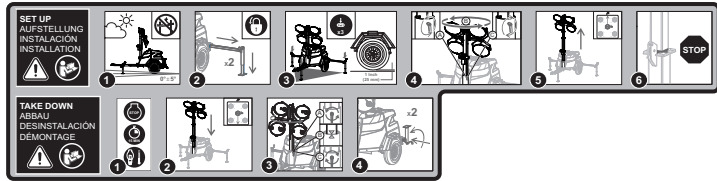
UNIT DECALS - FRONT, REAR AND TOP

Item	Part No.	Qty	Description	Notes
1	17979	1	Decal, safety MLT6	
2	17980	1	Decal, operation MLT6 (manual)	
3	76916	1	Decal, operation Powerzone	Powerzone only

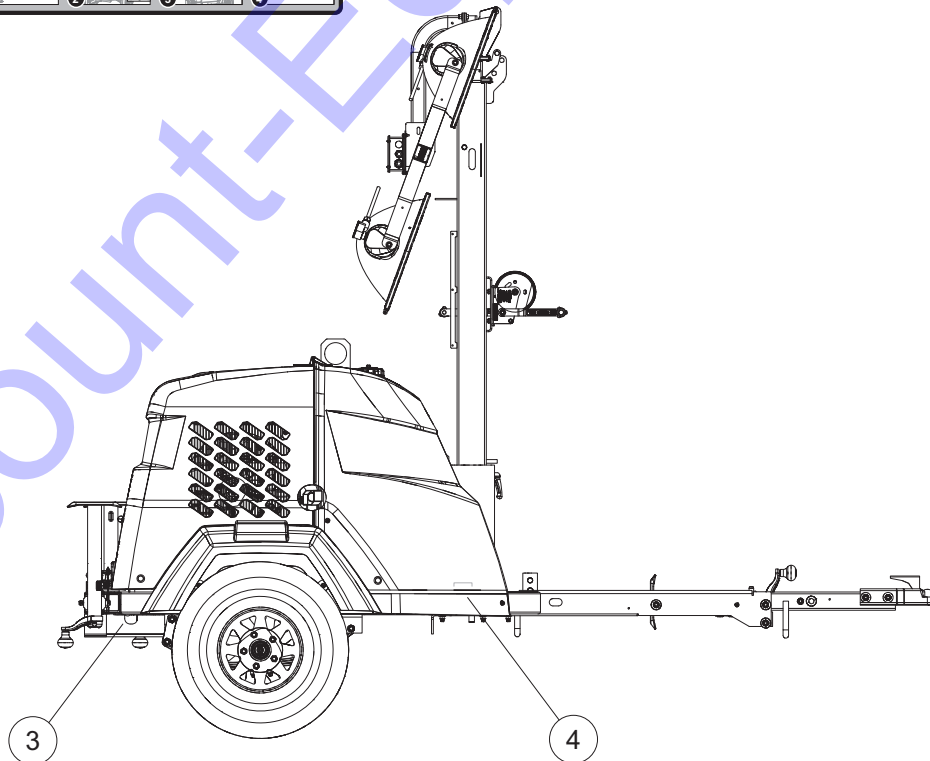
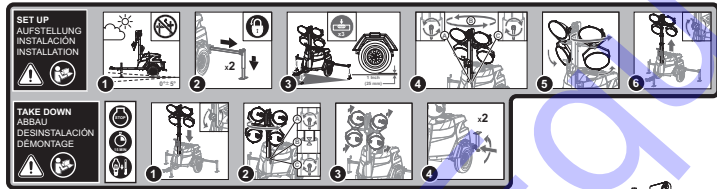
Discount-Equipment.com

UNIT DECALS - LEFT AND RIGHT SIDES

1



2

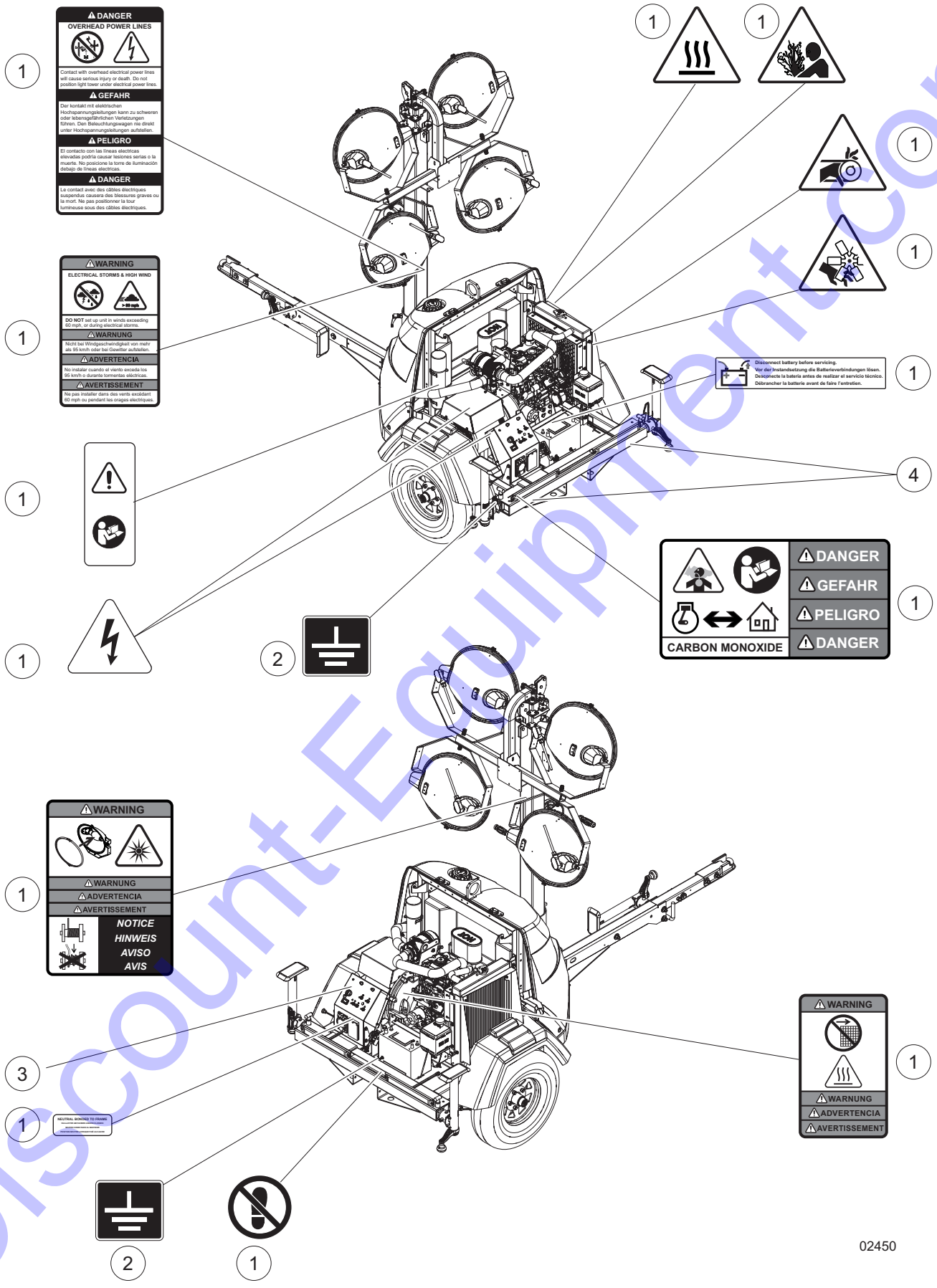


02432

UNIT DECALS - LEFT AND RIGHT SIDES

Item	Part No.	Qty	Description	Notes
1	70096	1	Decal, operation MLT6/8S (electric)	
2	17980	1	Decal, operation MLT6/8S (manual)	
3	72149	1	Reflector, red (4.25 inch x .75 inch)	Set of two
4	72150	1	Reflector, yellow (4.25 inch x .75 inch)	Set of two

UNIT DECALS - INSIDE UNIT



⚠ DANGER
OVERHEAD POWER LINES

 Contact with overhead electrical power lines will cause serious injury or death. Do not position light tower under electrical power lines.

⚠ GEFAHR
 Der Kontakt mit elektrischer Hochspannungsleitungen kann zu schweren oder tödlichen Verletzungen führen. Den Beleuchtungswagen nie direkt unter Hochspannungsleitungen aufstellen.

⚠ PELIGRO
 El contacto con las líneas eléctricas elevadas podría causar lesiones serias o la muerte. No coloque la torre de iluminación debajo de líneas eléctricas.

⚠ DANGER
 Le contact avec des câbles électriques suspendus causera des blessures graves ou la mort. Ne pas positionner la tour lumineuse sous des câbles électriques.

⚠ WARNING
ELECTRICAL STORMS & HIGH WIND

 DO NOT set up unit in winds exceeding 50 mph, or during storms.

⚠ WARNING
 Nicht bei Windgeschwindigkeit von mehr als 95 km/h oder bei Gewitter aufstellen.

⚠ ADVERTENCIA
 No instalar cuando el viento exceda los 95 km/h o durante tormentas eléctricas.

⚠ AVERTISSEMENT
 Ne pas installer dans des vents excédant 80 mph ou pendant les tempêtes électriques.

⚠

⚡

⏏

⚠ DANGER
⚠ GEFAHR
⚠ PELIGRO
⚠ DANGER

CARBON MONOXIDE

Disconnect battery before servicing.
 Vor der Instandsetzung die Batterieverbindungen lösen.
 Desconectar la batería antes de realizar el servicio técnico.
 Débrancher la batterie avant de faire l'entretien.

⚠ WARNING

⚠ WARNING
⚠ ADVERTENCIA
⚠ AVERTISSEMENT

NOTICE
HINWEIS
AVISO
AVIS

NEUTRAL BONDING TO FRAME

⏏

⊘

⚠ WARNING

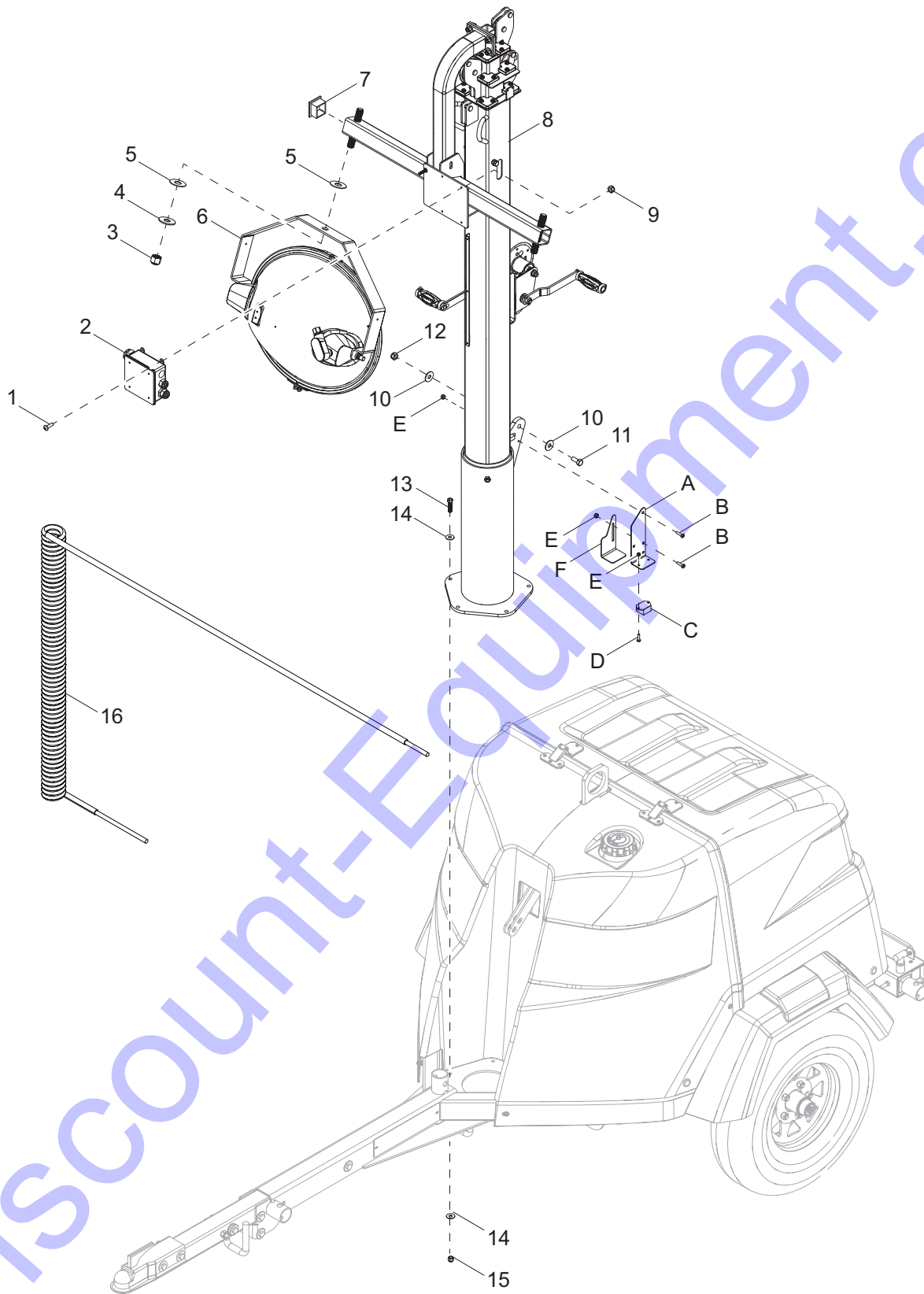
⚠ WARNING
⚠ ADVERTENCIA
⚠ AVERTISSEMENT

02450

UNIT DECALS - INSIDE UNIT

Item	Part No.	Qty	Description	Notes
1	17979	1	Decal, safety MLT6/8S	
2	12142	1	Decal, ground	
3	17986	1	Decal, control panel MLT 6SK-M	
--	70196	1	Decal, control panel - Powerzone	Powerzone only
4	72132	1	Reflector, rear 2.0 x 2.0 - red	Set of two

MAST, JUNCTION BOX AND LIGHTS TO UNIT



02434

MAST, JUNCTION BOX AND LIGHTS TO UNIT

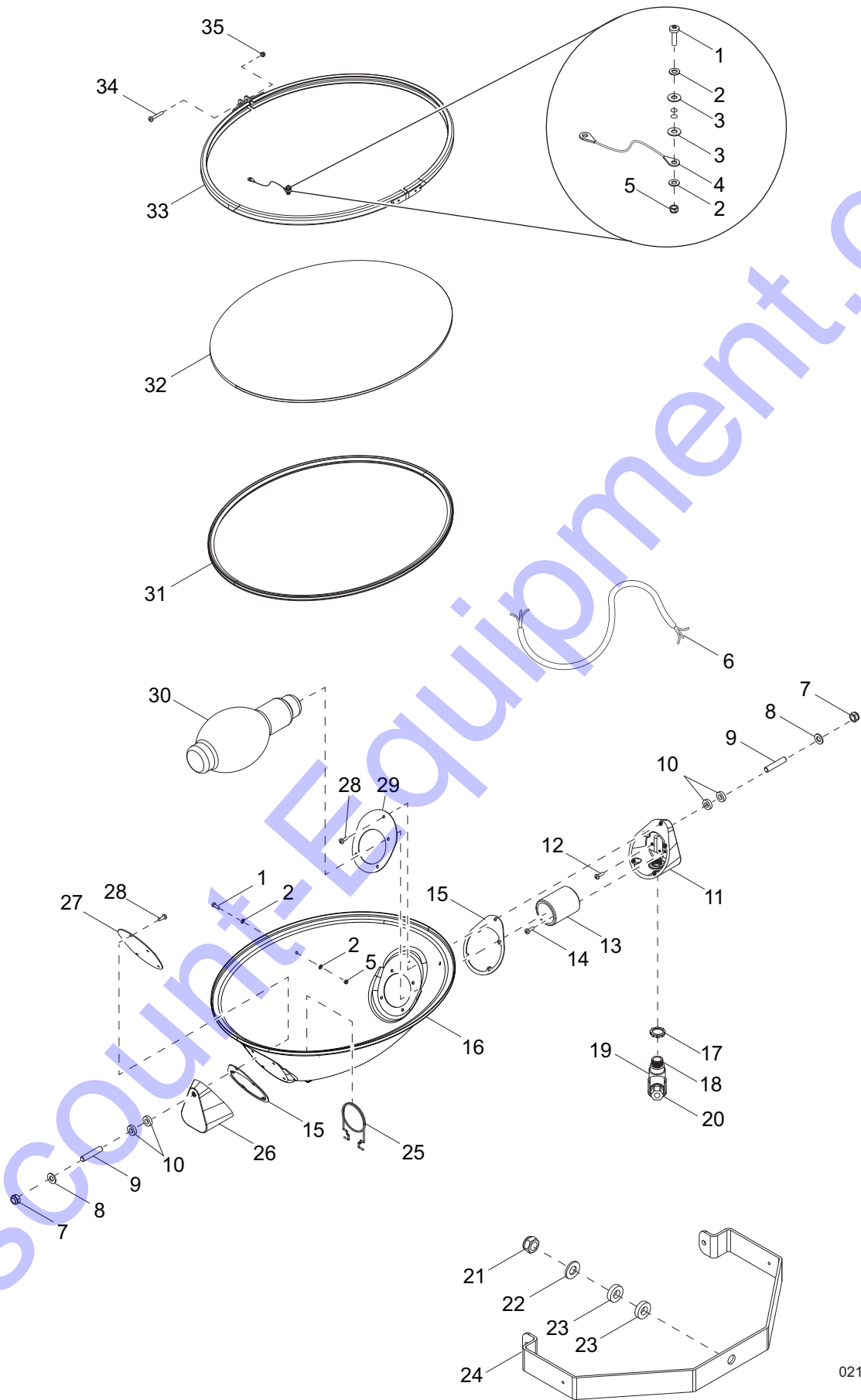
Item	Part No.	Qty	Description	Notes
1	60062	4	Screw, 10-32 x .750 pan Phillips, G2	
2	31250SRV	1	Assembly, mast box	
3	60584	4	Nut, .750-10 nylock, G5	
4	60247	4	Washer, .750 flat 2.020/.130	
5	63357	8	Washer, .750 flat 2.0/.062 - plastic	
6	10000008620	4	Assembly, light fixture 1050W MH	
7	31254	4	Plug, 2.0 square x .125 wall tube, plastic	
8	39648	1	Assembly, mast - manual winch, NAP	
9	60415	4	Nut, 10-32 nylock, SS	
10	60309	4	Washer, .500 flat 1.060/.090	
11	60484	2	Screw, .500-13 x 2.0 standard hex, G5	
12	62221	2	Nut, .500-13 nylock, G5	
13	60139	5	Screw, .375-16 x 1.50 hex, G5	
14	60386	10	Washer, .375 flat .993/.064	
15	60358	5	Nut, .375-16 nylock, G5	
16	39650	1	Coil cord with connector	

OPTIONAL FEATURES

Night Watchman

A	70208B	1	Bracket, night watchman
B	60488	4	Screw, 8-32 x .750 pan Phillips, G2
C	68763	1	Assembly, night watchman
D	62054	2	Screw, 8-32 x .500 pan Phillips 18-8, SS
E	60270	8	Nut, 8-32 nylock
F	56610B	1	Cover, dusk to dawn sensor

LIGHT ASSEMBLY

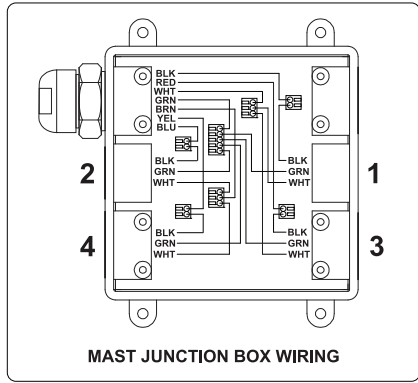


02143

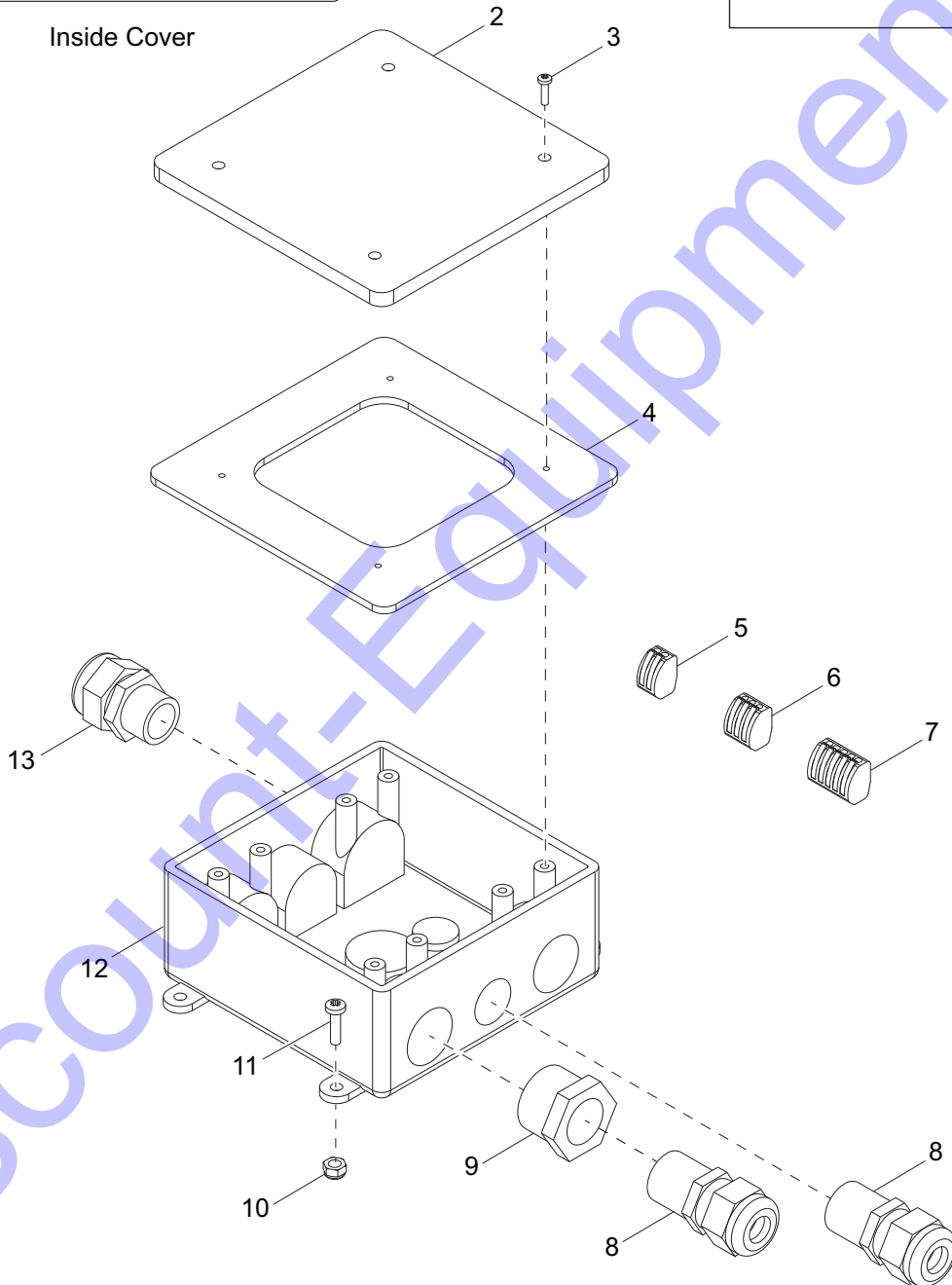
LIGHT ASSEMBLY

Item	Part No.	Qty	Description	Notes
1	13399	2	Screw, M4 x 18 pan Phillips	
2	60067	4	Washer, #10 flat .435/.060, SS	
3	13372	2	Washer, #4 nylon	
4	13370	1	Assembly, tether	
5	60051	2	Nut, M4-.70 nylock, G8.8	
6	13438	1	Cord, power hard wired	
7	62221	2	Nut, .500-13 nylock, G5	
8	60309	2	Washer, .500 flat 1.060/.090	
9	13392	2	Stud, trunnion	
10	13390	4	Washer, .500 nylon	
11	13375	1	Support, housing/trunnion with cord	
12	13393	1	Screw, M5 x 12 Phillips green	
13	13381	1	Socket, bulb	
14	60694	2	Screw, 8-32 x .750 pan Phillips, SS	
15	13378	2	Gasket, silicone	
16	13366	1	Housing	
17	15861	1	Nut, special, .500NPT lock	
18	13386	1	Fitting, nipple - .500	
19	13387	1	Connector, weathertight	
20	15864	1	Strain relief, .500NPT watertight, .270/.464 ID	
21	60584	1	Nut, .750-10 nylock, G5	
22	60247	1	Washer, .750 flat 2.020/.130	
23	63357	2	Washer, .750 flat 2.0/.062, plastic	
24	13368	1	Trunnion	
25	13892	1	Support, bulb	
26	13374	1	Support, housing/trunnion without cord	
27	13377	1	Bracket, end plate	
28	13388	10	Screw, M5 x12 slotted hex with flange	
29	13376	1	Bracket, socket end plate	
30	10000008611	1	Bulb, metal halide 1050W	
31	13373	1	Gasket, lens oval	
32	13369	1	Lens, glass oval	
33	13367	1	Assembly, aluminum ring	
34	60167	1	Screw, M5-.80 x 35 pan Phillips, G4.8	
35	60038	1	Nut, M5-.80 nylock	
--	10000008620	4	Assembly, light fixture - 1050W non-quick disconnect	Items 1-35

MAST JUNCTION BOX ASSEMBLY



Inside Cover

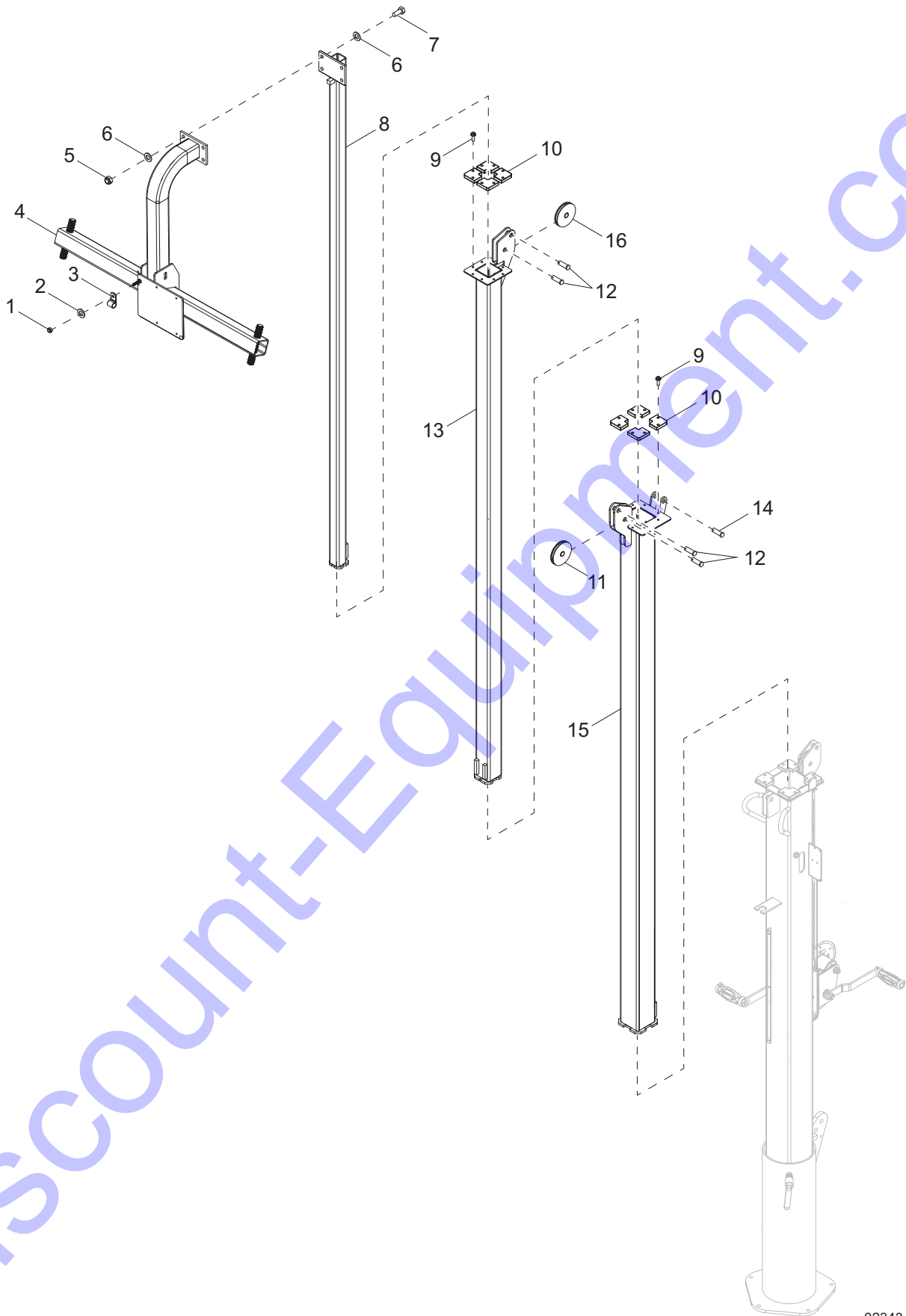


02132

MAST JUNCTION BOX ASSEMBLY

Item	Part No.	Qty	Description	Notes
1	37215	1	Decal, mast junction box wiring	
2	12109	1	Cover, box, 2-gang plastic	
3	60424	4	Screw, 6-32x.750 pan Phillips, G2	
4	13749SRV	1	Gasket, junction box - HFI 281000	
5	66100	4	Connector, 2 position.	
6	66101	2	Connector, 3 position.	
7	66102	1	Connector, 5 position.	
8	60755	2	Fitting, str. .750MNPT x .500FNPT, nylon	
9	15864	4	Strain relief, .500NPT watertight	
10	60415	4	Nut, 10-32 nylock, SS	
11	60062	4	Screw, 10-32x.750 pan Phillips, G2	
12	12094	1	Box, junction	
13	14656	1	Strain relief, .750NPT watertight	
14	31250SRV	1	Assembly, junction box	

MAST ASSEMBLY

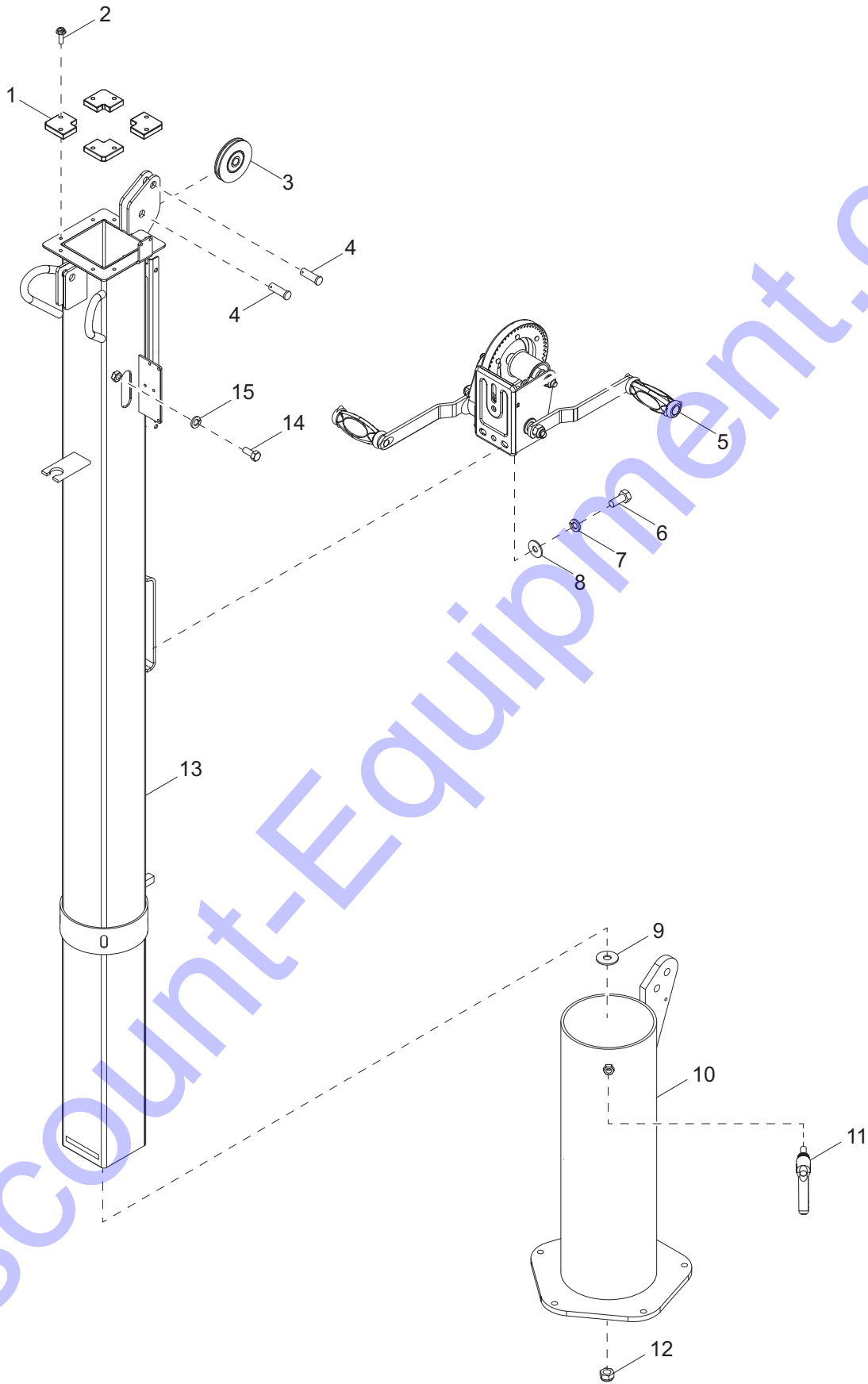


02343

MAST ASSEMBLY

Item	Part No.	Qty	Description	Notes
1	60144	1	Nut, .250-20 nylock, G5	
2	60243	1	Washer, .250 flat .735/.060	
3	16143	1	Clamp, tubing .500	
4	43201B	1	Weldment, mast, crossbar	
5	60358	4	Nut, .375-16 nylock, G5	
6	60386	8	Washer, .375 flat .993/.064	
7	60352	4	Screw, .375-16 x 1.250 hex, G5	
8	31264B	1	Weldment, mast - 1.50	
9	63358	16	Screw, .250-20 x .625 hex washer head	
10	31225	8	Guide	
11	33736	1	Assembly, pulley - vertical mast	
12	63325	4	Pin, clevis .500 dia x 1.063 UL	
13	31261B	1	Weldment, mast - 2.25	
14	35655	1	Pin, clevis .500 dia x 1.750 ZP	
15	37465B	1	Weldment, mast - 3.0	
16	14262	1	Sheave, 3.00	
--	31247	1	Cable, .188 x 144 w/ ball swedge	winch cable
--	31248	2	Cable, .188 x 79.75 w/ball swedge	middle cable
--	31277	1	Cable, .188 x 78.0 w/ball swedge	top cable

MAST ASSEMBLY - BOTTOM POST - MANUAL WINCH

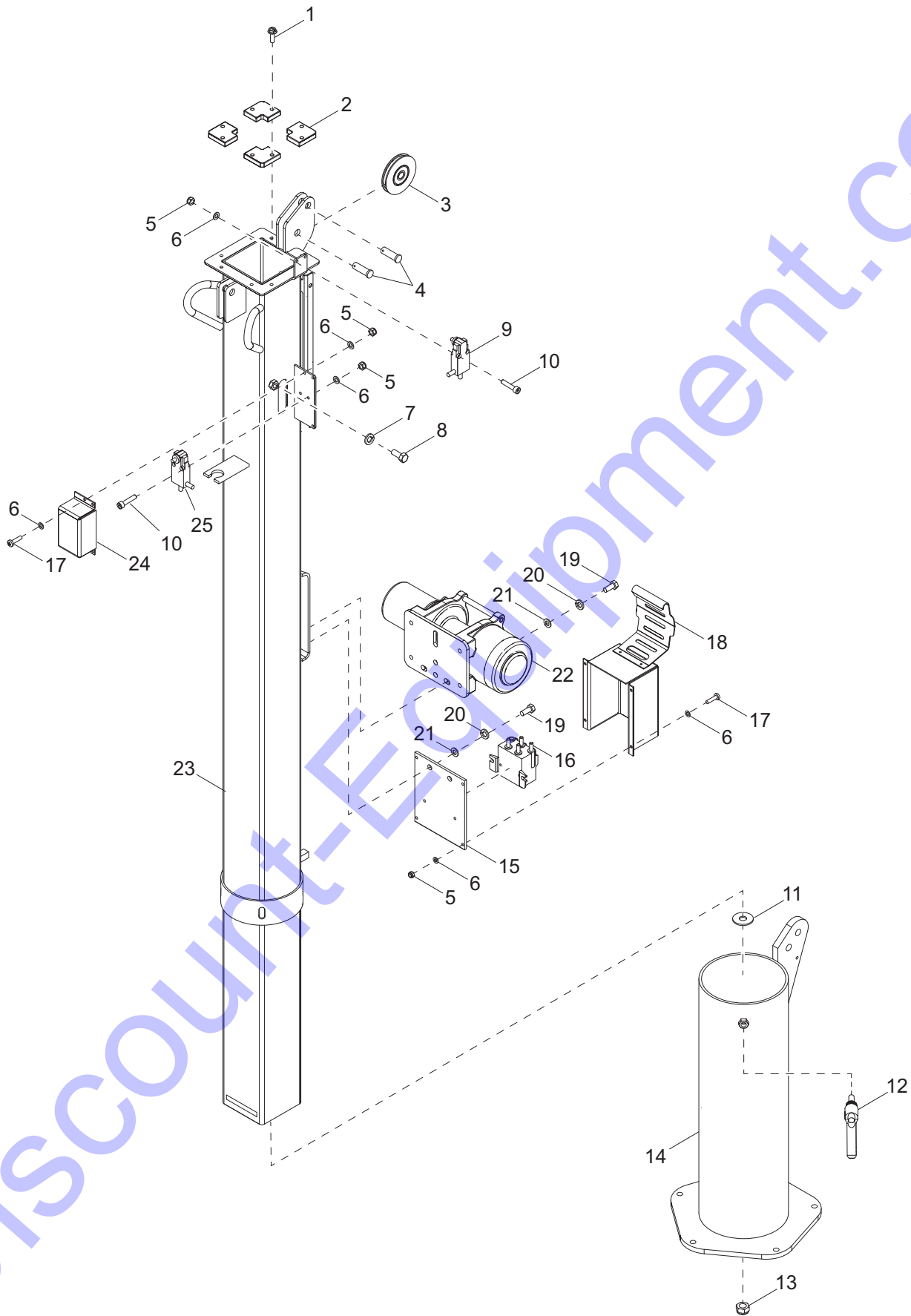


02344

MAST ASSEMBLY - BOTTOM POST - MANUAL WINCH

Item	Part No.	Qty	Description	Notes
1	31225	4	Guide	
2	63358	8	Screw, .250-20 x .625 hex washer head	
3	33736	1	Assembly, pulley vertical mast	
4	63325	2	Pin, clevis .500 dia x 1.063 UL	
5	72127	1	Winch, manual - 1500 lb, dual handle	
6	60205	3	Screw, .375-16 x 1.0 hex, G5	
7	60206	3	Washer, .375 split lock - hardened	
8	60386	3	Washer, .375 flat .993/.064	
9	60247	1	Washer, .750 flat 2.020/.130	
10	31218B	1	Weldment, mast rotation tube	
11	36978	1	Handle, .375-16 x 1.0 adjustable	
12	60584	1	Nut, .750-10 nylock, G5	
13	37462B	1	Weldment, mast 4.0 inch	
14	62269	2	Screw, .375-16 x .75 hex, SS - red	
15	60703	2	Washer, .375 split lock, SS	

MAST ASSEMBLY - BOTTOM POST - ELECTRIC WINCH

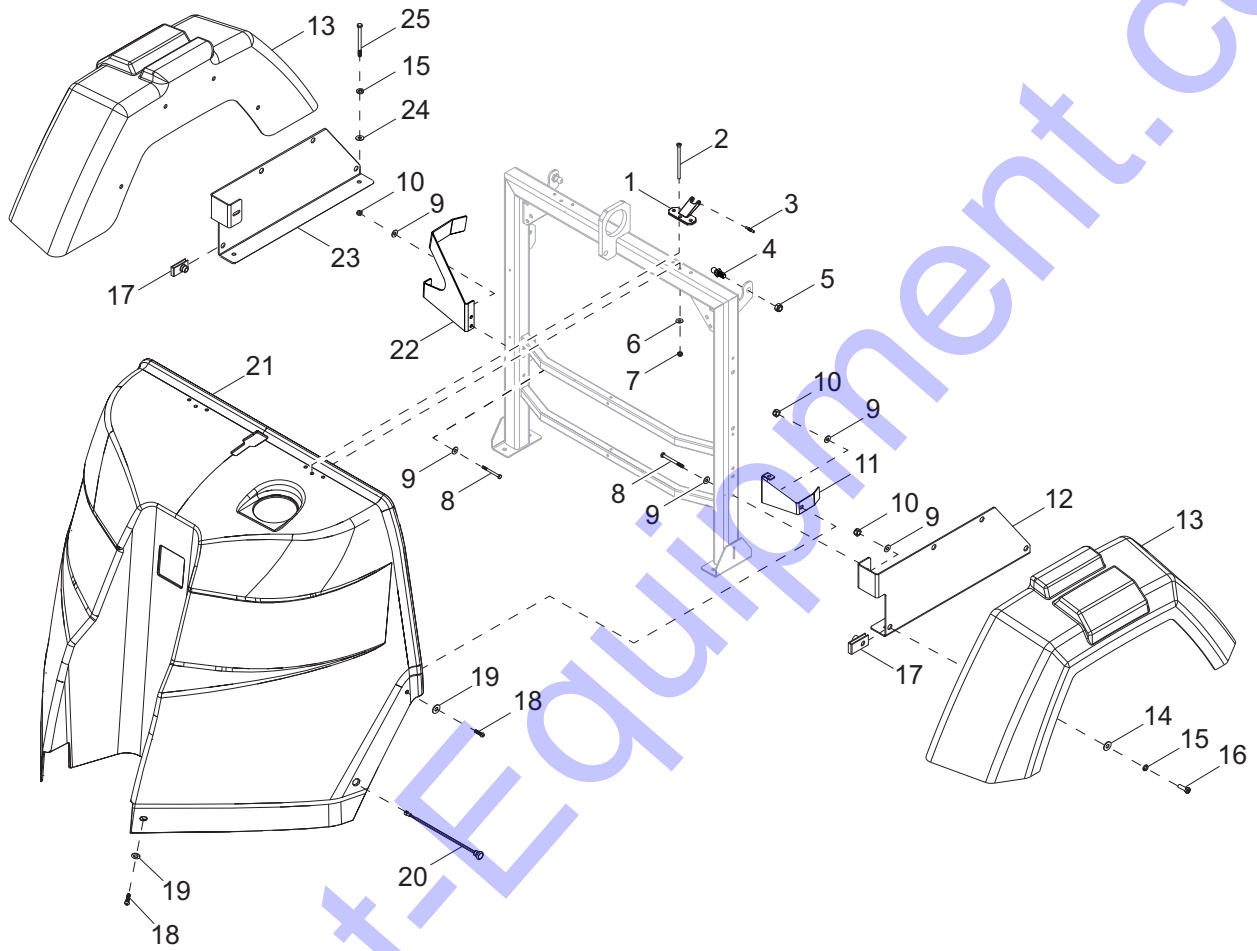


02341

MAST ASSEMBLY - BOTTOM POST - ELECTRIC WINCH

Item	Part No.	Qty	Description	Notes
1	63358	8	Screw, .250-20 x .625 hex washer head	
2	31225	4	Guide	
3	33736	1	Assembly, pulley vertical mast	
4	63325	2	Pin, clevis .500 dia x 1.063 UL	
5	60207	11	Nut, 8-32 nylock, G6	
6	60269	18	Washer, #8 flat .433/.036	
7	60703	2	Washer, .375 split lock, SS	
8	62269	2	Screw, .375-16 x .75 hex, SS - red	
9	31740	1	Assembly, down switch	
10	67190	4	Screw, 8-32 x 1.125 socket head, SS	
11	60247	1	Washer, .750 flat 2.020/.130	
12	36978	1	Handle, .375-16 x 1.0 adjustable	
13	60584	1	Nut, .750-10 nylock, G5	
14	31218B	1	Weldment, mast rotation tube	
15	37207B	1	Plate, contactor	
16	11293	1	Contactor	hardware included
17	60244	7	Screw, 8-32 x .750 pan Phillips, G2	
18	37468B	1	Weldment, winch cover	
19	60205	5	Screw, .375-16 x 1.0 standard hex, G5	
20	60206	5	Washer, .375 split lock	
21	60386	5	Washer, .375 flat .993/.064	
22	12874	1	Winch, electric - 770 lb hoist	
23	37462B	1	Weldment, mast 4.0 inch	
24	37205B	1	Cover, up limit switch	
25	31739	1	Assembly, up stop switch	
--	12922	2	Boot, battery cable - red	
--	31742	1	Wire group, electric winch box	
--	31743	1	Harness, winch power cables	
--	72143	1	Harness, winch, stud-contactor	

ENCLOSURE ASSEMBLY (1 OF 2)

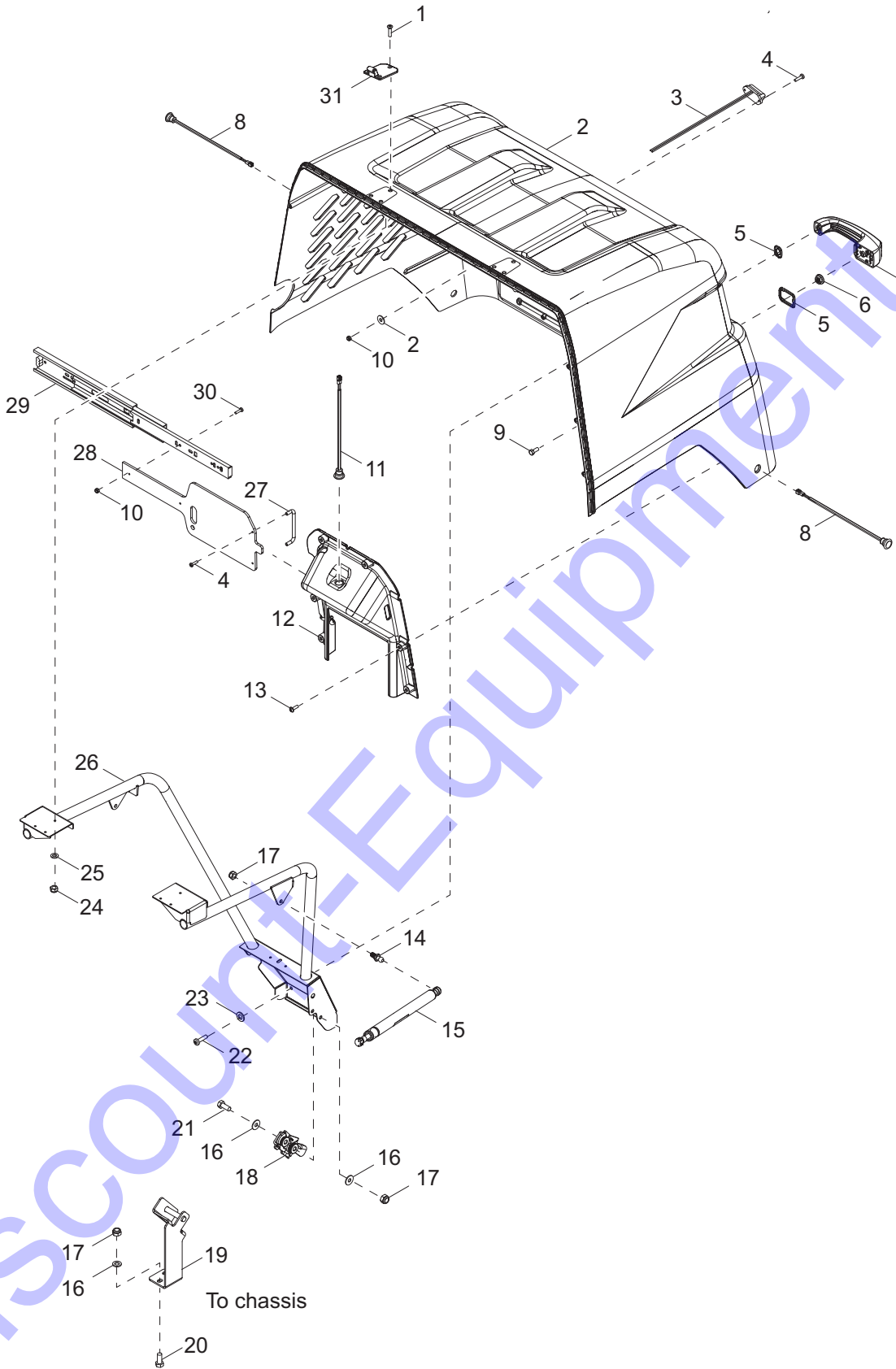


02435

ENCLOSURE ASSEMBLY (1 OF 2)

Item	Part No.	Qty	Description	Notes
1	10000022542	2	Hinge, offset housing leaf - front	
2	35282	6	Screw, 10-24 x 3.0 flat head Phillips, SS	
3	10000022543	2	Pin, offset housing hinge - knurled	
4	35293	2	Ball stud, 10mm, .312-18	
5	60303	2	Nut, .312-18 nylock, G2	
6	60237	12	Washer, #10 flat .495/.036	
7	60457	12	Nut, M6-1.0 weld, class 5	
8	61234	6	Screw, .250-20 x 2.750 standard hex, G5	
9	60243	12	Washer, .250 flat .735/.060	
10	60144	8	Nut, .250-20 nylock, G5	
11	10000017357	1	Guide bracket, enclosure meeting -LH	
12	35141B	1	Bracket, mounting fender - left	
13	17982	2	Fender, plastic, 13 in. wheel	
14	60386	8	Washer, .375 flat .993/.064	
15	60271	8	Washer, .312 split lock	
16	60028	8	Screw, .312-18 x 1.0 standard hex, G5	
17	62086	8	Nut, .312-18 U-clip - short type	
18	68070	4	Screw, .250-20 x 1.00 button hex, SS	
19	60696	6	Washer, .250 flat .625/.050, SS	
20	36961	2	Assembly, amber side marker light	
21	10000012656	1	Enclosure, front cover	
22	10000017378	1	Guide bracket, enclosure meeting -RH	
23	35216B	2	Bracket, mounting fender - right	
24	60119	6	Washer, .312 flat .875/.070	
25	60404	4	Screw, .312-18 x 1.250 standard hex, G5	

ENCLOSURE ASSEMBLY (2 OF 2)

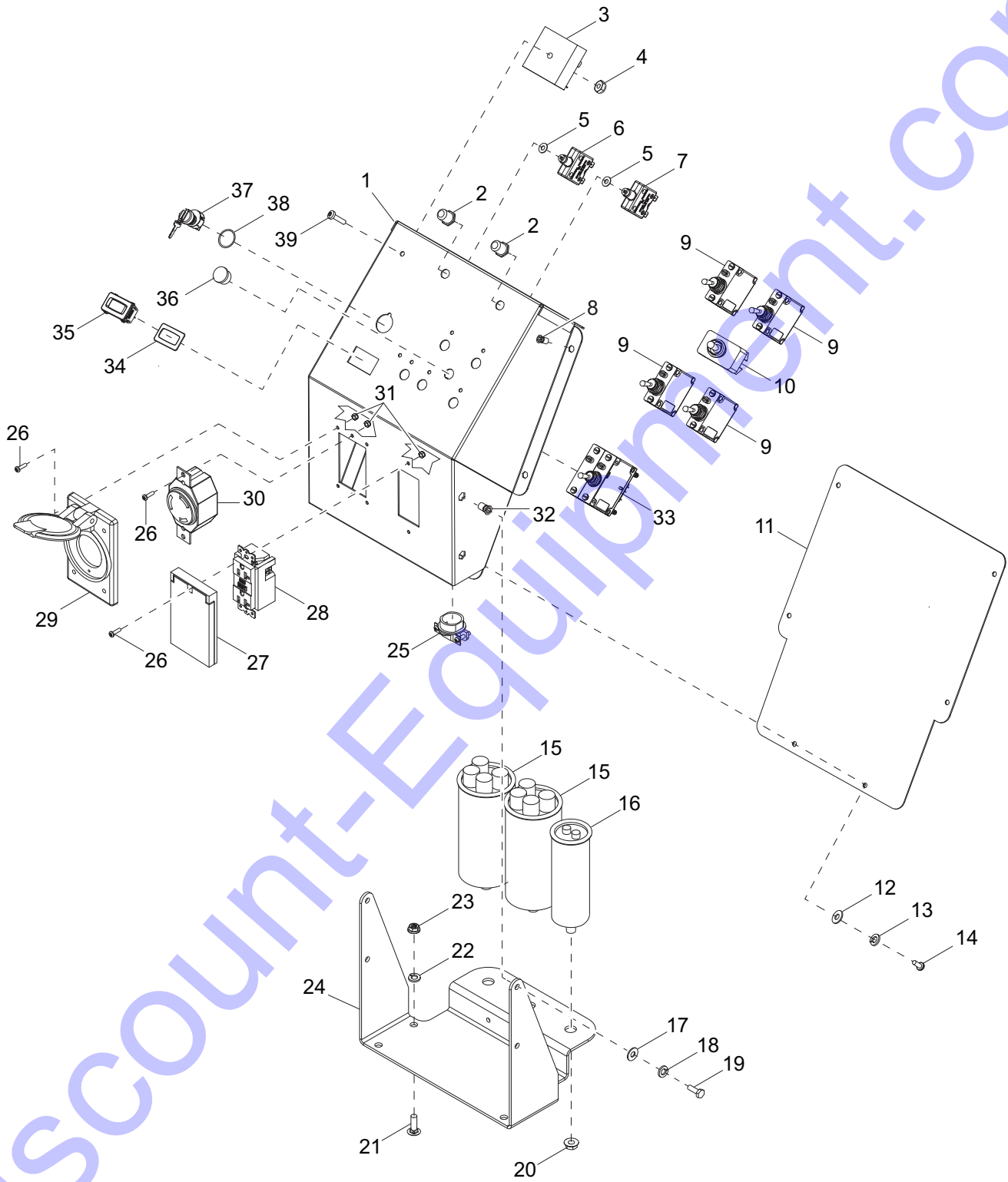


02436

ENCLOSURE ASSEMBLY (2 OF 2)

Item	Part No.	Qty	Description	Notes
1	35290	6	Screw, 10-24 x 1.00 flat Phillips, SS	
2	10000012659	1	Housing, rear textured - CAT yellow	
3	36963	1	Assembly, license plate light	
4	60694	4	Screw, 8-32 x .750 pan Phillips, SS	
5	70216	1	Gasket, kit handle, push button	
6	60036	1	Nut, M6-1.00 serrated flange, G8.8	
7	35138	1	Handle, push-button padlock	
8	36962	2	Assembly, red side marker	
9	60335	1	Screw, M6-1.00 x 25 standard hex, SS	
10	60270	4	Nut, 8-32 nylock, class 6	
11	36964	1	Assembly, controls light	
12	10000012596	1	Bezel, control panel textured - black	
13	10000017348	6	Screw, D60-2.14 x 20TRWH	
14	35293	2	Ball stud, 10mm, .313-18	
15	35137	2	Gas shock, 120 lb	
16	60119	6	Washer, .312 flat .875/.070	
17	60303	6	Nut, .312-18 nylock, G2	
18	35139	1	Latch, rotary	
19	37178B	1	Mount, door latch striker	
20	61066	2	Screw, .312-18 x 1.00 carriage square - SS	
21	62001	2	Screw, .312-18 x 1.250 standard hex, G5	
22	60146	3	Screw,	
23	60243	3	Washer, .250 flat .735/.060	
24	60457	6	Nut, 10-24 nylock, G2 ZC	
25	60237	2	Washer, #10 flat .495/.036 ZC	
26	37012B	1	Weldment, enclosure structure	
27	37123	1	Handle, control box cover	
28	10000017623	1	Cover, sliding control panel	
29	36914	1	Slide, control box cover	
30	62054	2	Screw, 8-32 x .500 pan Phillips - SS	
31	10000022523	2	Hinge, leaf offset housing - rear	
--	60335	1	Screw, M6-1.00 x 25 standard hex, SS	
--	60375	1	Clamp, tubing - .312 lt duty	

CONTROL BOX ASSEMBLY

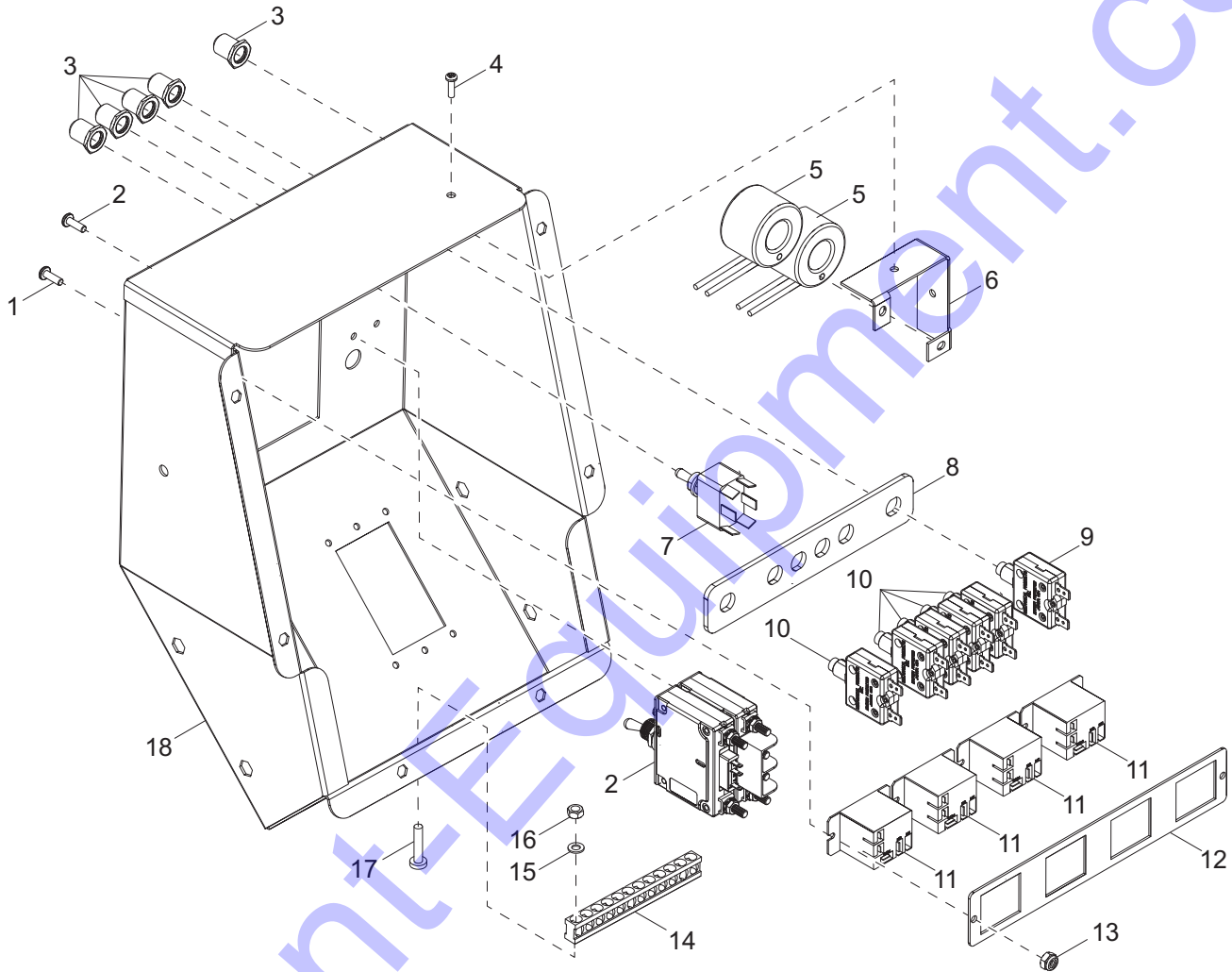


02135

CONTROL BOX ASSEMBLY

Item	Part No.	Qty	Description	Notes
1	36884B	1	Control box	
2	36938	2	Boot, push button breaker	
3	14201	1	Relay, 10A SPDT, time delay - 15 second fixed	
4	60061	5	Nut, 10-32 nylock	
5	60386	2	Washer, .375 flat .993/.064	
6	36937	1	Breaker, 10A DC	
7	36935	1	Breaker, 15A, 1 pole, 250V	
8	62234	6	Insert, threaded #10-32 hex .020-.130 grip	
9	36880	4	Switch, light - 15A	
10	65707	1	Switch, toggle - SPDT spring	Electric mast only
11	36885B	1	Cover, control panel box	
12	60237	6	Washer, #10 flat .495/0.36	
13	60252	6	Washer, #10 split lock	
14	62254	6	Screw, 10-32x.500 serrated flange, SS	
15	65959	2	Capacitor, dual 24 μ F sealed stud mount	
16	36980	1	Capacitor, 25 μ F, 5% 440VAC, sealed stud mount	
17	60243	4	Washer, .250 flat .735/.060	
18	60286	4	Washer, .250 split lock	
19	60281	4	Screw, .250-20 x .750 standard hex, G5	
20	60148	3	Nut, M12-1.75 serrated flange, G8.8	
21	61066	4	Screw, .312-18 x 1.0 carriage, SS	
22	60119	4	Washer, .312 flat .875/.070	
23	60095	4	Nut, .312-18 serrated flange	
24	36911B	1	Bracket, control box mounting	
25	14219	1	Strain relief - .75 Romex w/nut	
26	62210	6	Screw, 6-32 x .50 pan Phillips, SS	
27	37017	1	Cover receptacle - weather proof, 20A GFCI single	
28	14130	1	Receptacle, 120V/20A GFI	
29	36939	1	Cover, receptacle - weather-proof 20/30A twist-lock	
30	14137	1	Receptacle, 240V/30A twist	
31	60728	6	Nut, 6-32 nylock	
32	63231	4	Insert, threaded .250-20 hex .027-.165 grip	
33	36975	1	Breaker, 30A main	
34	36944	1	Gasket, hour meter	
35	36886	1	Meter, hour	
36	65798	1	Plug	Manual mast only
37	36882	1	Switch, sealed key, 4-position	
38	37042	1	O-ring, .75ID x 1.5-1.6 inch. x 3/32 inch	
39	63308	1	Screw, 10-32 x 1.250 pan Phillips, SS	
--	68282	1	Wire group, control box - electric mast	
--	68283	1	Harness, generator to control box	
--	68284	1	Harness, control box to electric mast	

CONTROL BOX ASSEMBLY - POWERZONE OPTION (1 OF 2)

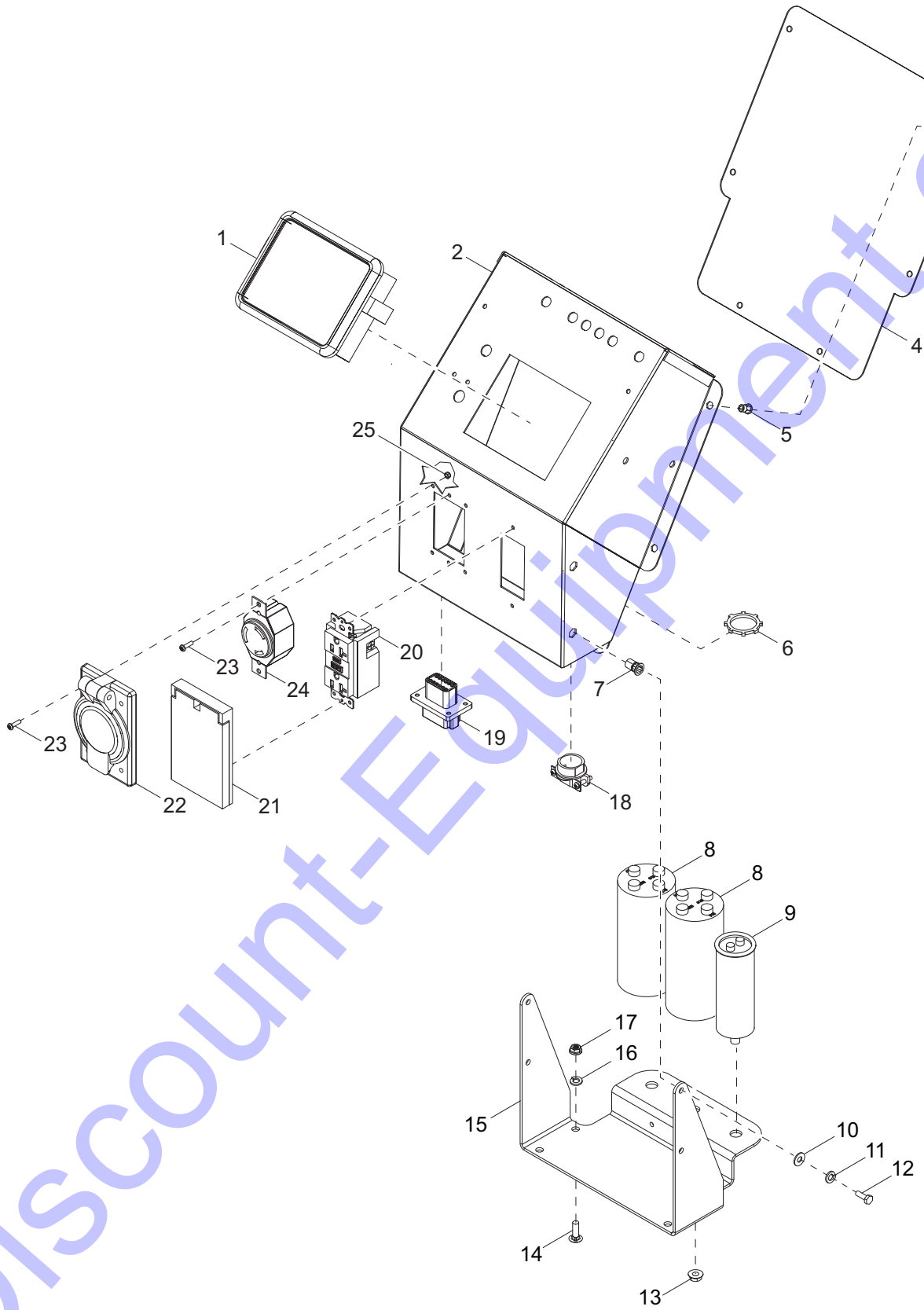


02345

CONTROL BOX ASSEMBLY - POWERZONE OPTION (1 OF 2)

Item	Part No.	Qty	Description	Notes
1	62054	3	Screw, 8-32 x .500 pan Phillips,- SS	
2	36975	2	Breaker, 30A main	with hardware
3	36938	6	Boot, push button breaker	
4	62210	6	Screw, 6-32 x .50 pan Phillips - SS	
5	66255	2	Transformer, current	
6	38449B	1	Bracket, CT mount	
7	68508	1	Switch, toggle - SPST (on-off) 12A 125V	
8	38448B	1	Spacer, breaker control box	
9	36937	1	Breaker, 10A DC	
10	36935	5	Breaker, 15A, 250V, 1 pole	
11	29759	4	Relay, 12V coil 120-240 VAC rated	
12	38447B	1	Bracket, relay	
13	60270	3	Nut, 8-32 nylock, G6	
14	14204	1	Kit, ground bar	
15	60252	6	Washer, #10 split lock	
16	60318	2	Nut, 8-32 Hex, G5	
17	60406	2	Screw, 8-32 x 1.0 pan Phillips, G2	
18	37823B	1	Box, control - Powerzone	

CONTROL BOX ASSEMBLY - POWERZONE OPTION (2 OF 2)

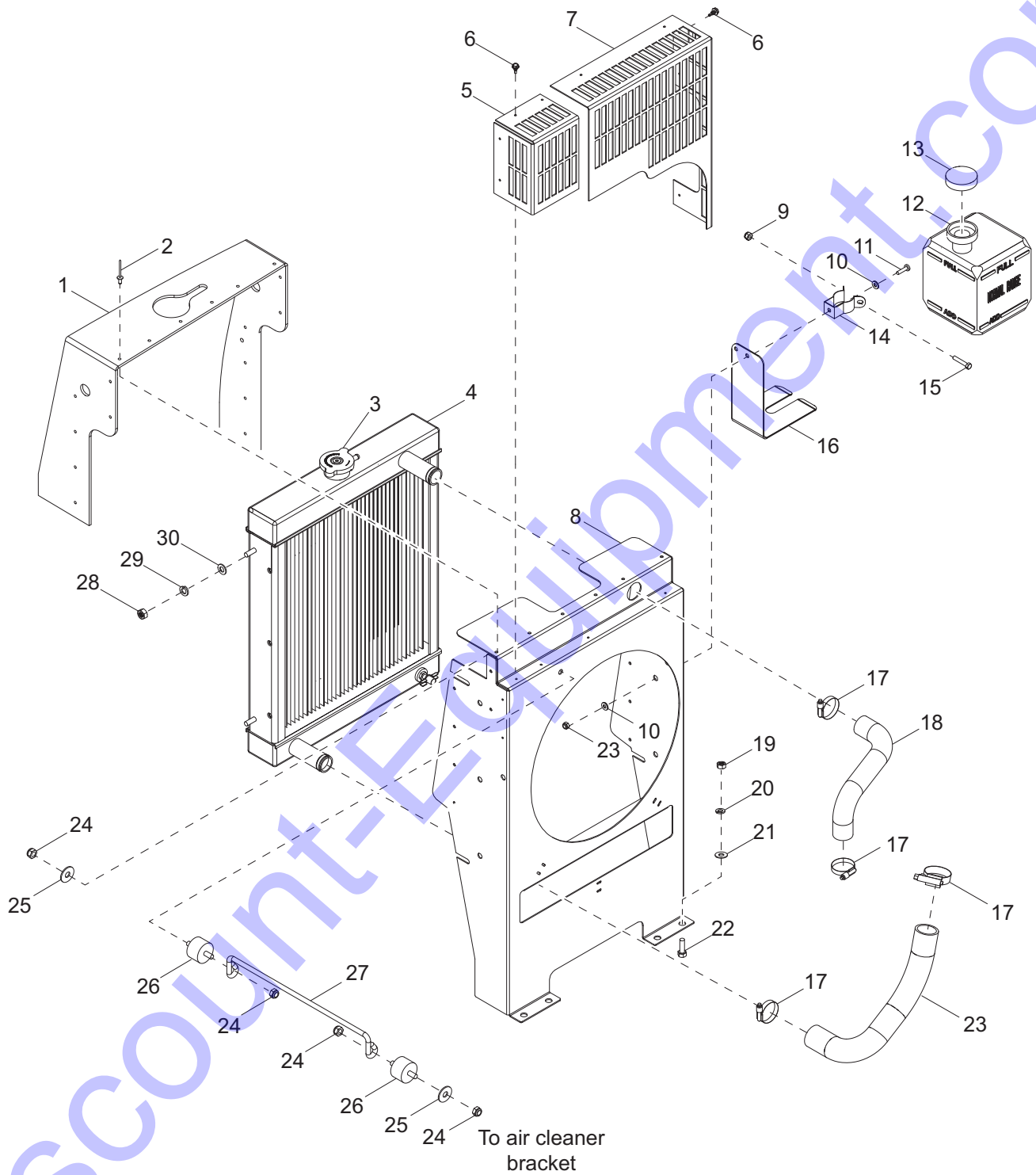


02346

CONTROL BOX ASSEMBLY - POWERZONE OPTION (2 OF 2)

Item	Part No.	Qty	Description	Notes
1	70137	1	Controller, Deep Sea - programmed	
2	37823B	1	Box, Powerzone control panel	
3	60277	6	Screw, 10-32 x .500 pan Phillips, G2	
4	38413B	1	Cover, control panel box	
5	62234	6	Insert, 10-32 hex, .020-.130 grip, threaded	
6	16300	2	Nut, .750 Romex strain relief	
7	63231	4	Insert, .250-20 hex, .027-.165 grip, threaded	
8	65959	2	Capacitor, dual 24 μ F sealed stud mount	
9	36980	1	Capacitor, 25 μ F, 5% 440VAC, sealed stud mount	
10	60243	4	Washer, .250 flat .735/.060	
11	60286	4	Washer, .250 split lock	
12	60647	4	Screw, .250-20 x .500 hex, G5	
13	60148	3	Nut, M12-1.75 serrated flange, G8.8	
14	61066	4	Screw, .312-18 x 1.0 carriage - SS	
15	38409B	1	Bracket, control box mounting	
16	60119	4	Washer, .312 flat .875/.070	
17	60095	4	Nut, .312-18 serrated flange - case hardened	
18	14219	2	Strain relief, .75 Romex with nut	
19	66695	1	Connector, Duetsch 12 position - flange DT	
20	14130	1	Receptacle, 120V/20A GFI	
21	37017	1	Cover, receptacle 20A GFCI single - weatherproof	
22	36939	1	Cover, receptacle 20/30A - weatherproof	
23	62210	6	Screw, 8-32 x .500 pan Phillips - SS	
24	14137	1	Receptacle, 250V/ 30A twist	
25	60728	6	Nut, 6-32 nylock, G5	
--	68534	1	Harness, control box Powerzone	replaces p/n 68284
--	68535	1	Harness, gen to control box Powerzone	replaces p/n 68283
--	68844	1	Harness, engine Powerzone	replaces p/n 37034

COOLING SYSTEM ASSEMBLY

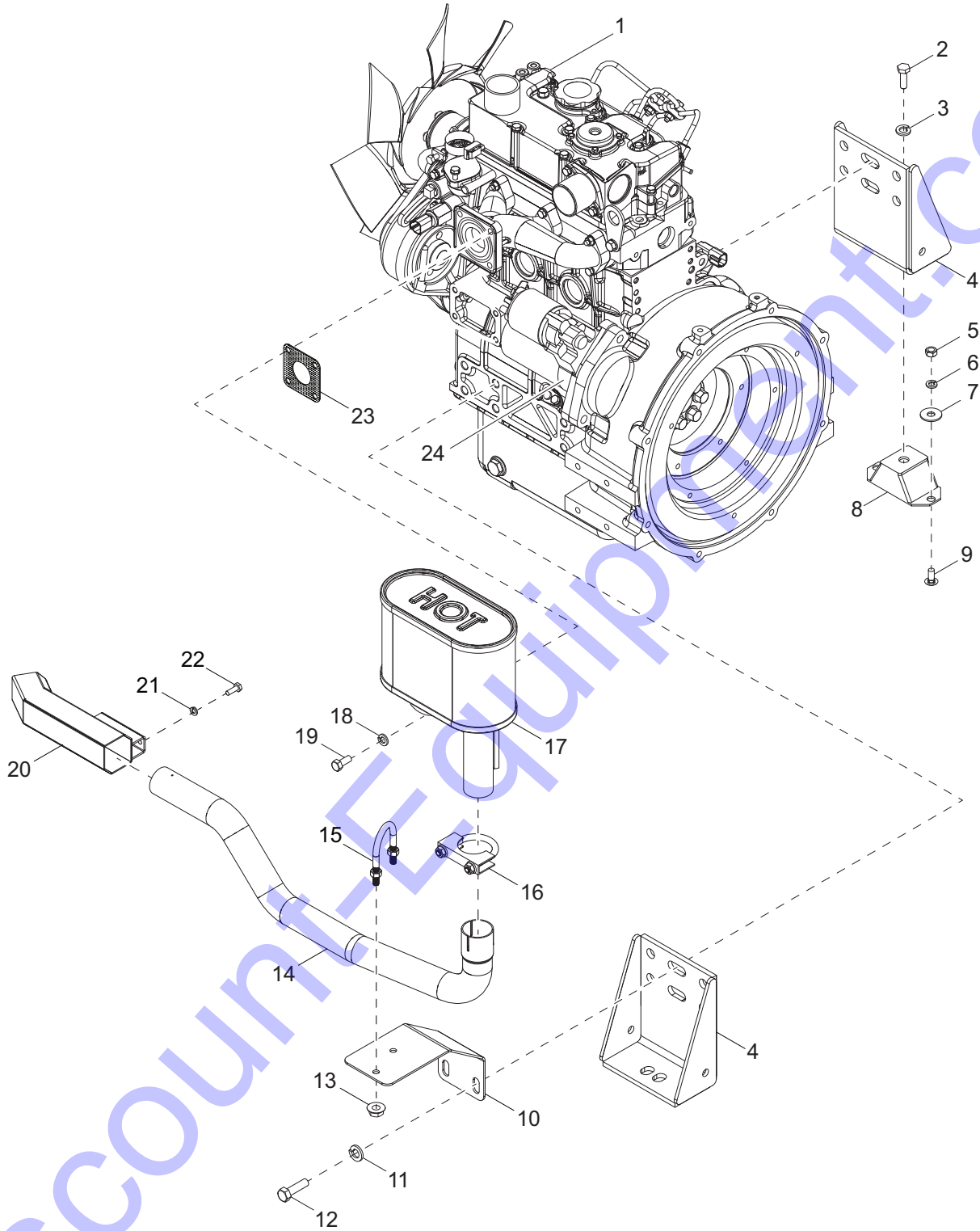


02451

COOLING SYSTEM ASSEMBLY

Item	Part No.	Qty	Description	Notes
1	36979	1	Seal, rubber, cooling	
2	60195	18	Rivet, .188 dia. x .375 to .500 grip, large flange	
3	19219	1	Cap, radiator pressure small - 14.7 psi	
4	10000020162	1	Radiator	
5	36227B	1	Guard, fan, left	
6	60364	9	Screw, 10-16x5.0 std hex, G2	
7	72161B	1	Guard, fan, right	
8	21321B	1	Fan shroud	
9	60144	1	Nut, .250-20 nylock, G5	
10	60067	4	Washer, #10 flat .435/.060, SS	
11	61180	2	Screw, 10-32 x .750 pan Phillips, SS	
12	20287	1	Jug, overflow 2 qt. (.5 gal)	
13	19714	1	Cap, overflow jug	
14	19726	1	Clamp, overflow bottle	
15	60414	1	Screw, .250-20 x 1.50 standard hex, G5	
16	22419B	1	Bracket, support overflow jug .5 gallon	
17	15422	4	Clamp, hose - SAE 020 (.75-1.75)	
18	31543	1	Hose, radiator - upper	
19	60285	14	Nut .312-18 hex, G2	
20	60271	21	Washer, .312 split lock	
21	60119	24	Washer .312 flat .875/.070	
22	61066	4	Screw, .312-18 x 1.00 carriage 18-8 SS	
23	31542	1	Hose, radiator - lower	
24	62079	4	Nut, .312-18 nylock jam	
25	60119	2	Washer, .312 flat .875/.070	
26	34052	2	Isolator, rubber 1.50 x 1.0, 5/16-18 studs	
27	36989	1	Rod, radiator stay	
28	60032	4	Nut, M8-1.25 hex, G8.8	
29	60029	2	Washer, M8 split lock	
30	60166	2	Washer, M8 flat	

ENGINE ASSEMBLY (1 OF 2)

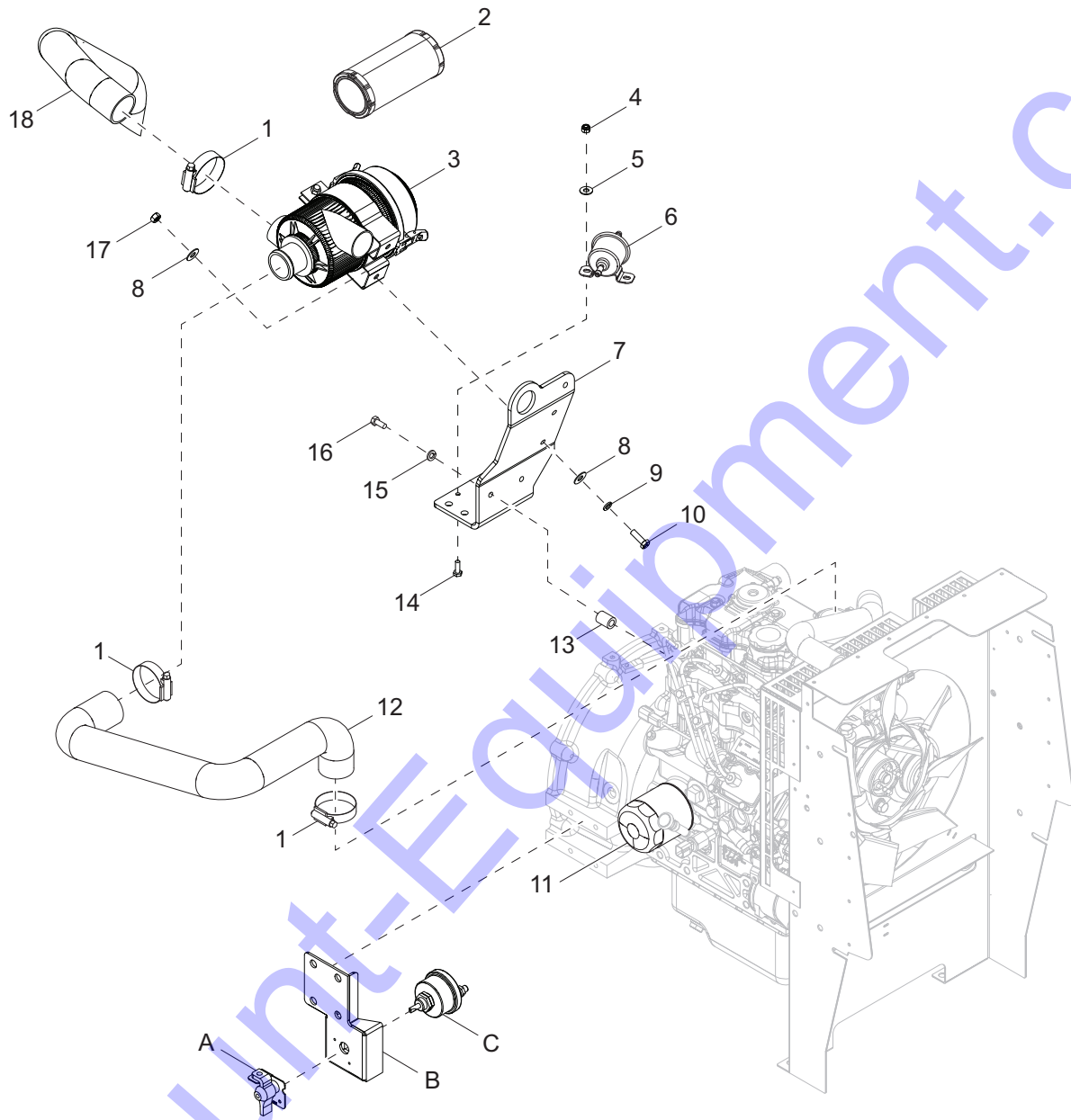


02452

ENGINE ASSEMBLY (1 OF 2)

Item	Part No.	Qty	Description	Notes
1	73190	1	Engine, Caterpillar C1.1, TF4	
2	60275	4	Screw, .500-13 x 1.0 hex, G5	
3	60702	4	Washer, .500 split lock, SS	
4	12058B	2	Weldment, engine mount	
5	60285	4	Nut, .312-18 hex, G2	
6	60271	4	Washer, .312 split lock	
7	60119	4	Washer, .312 flat .875/.070	
8	15241	2	Isolator, 80-200 lbs - 2 inch WD	
9	61066	4	Screw, .312-18 x 1.0 carriage, SS	
10	10000025229	1	Bracket, side exhaust	
11	60026	8	Washer, M10 split lock	
12	60422	8	Screw, M10-1.25 x 25 standard hex, G8.8	
13	60095	2	Nut, .312-18 serrated flange	
14	10000024188	1	Pipe, side exhaust	
15	61235	1	U-bolt, .312-18 x 2.688 x 2.063	
16	68082	1	Clamp, muffler - 1.63	
17	17426	1	Muffler	
18	60029	4	Washer, M8 split lock	
19	60165	4	Screw, M8-1.250 x 16 hex, G10.9	
20	76924B	1	Shield, exhaust	
21	60286	2	Washer, .250 split lock	
22	60281	2	Screw, .250-20 x .750 standard hex, G5	
23	11042SRV	1	Gasket, muffler	
24	39843	1	Starter	
--	75007	1	Harness, main	

Note: Engine and generator parts used in all Generac Mobile Products, LLC equipment carry the Original Equipment Manufacturer (OEM) warranty unless otherwise stated. OEM warranty parts must be purchased through an OEM dealer. Please contact Generac Mobile Products, LLC with questions.



02453

ENGINE ASSEMBLY (2 OF 2)

Item	Part No.	Qty	Description	Notes
1	60316	3	Clamp, hose - SAE 032 (1.56-2.50)	
2	16444	1	Element, air filter	
3	34066	1	Filter, air, w bracket	incl. 16444
4	60144	2	Nut, .250-20 nylock, G5	
5	60243	2	Washer, .250 flat .735/.060	
6	12994	1	Fuel pump, electric	
7	17062B	1	Bracket, air cleaner	
8	60119	6	Washer, .312 flat .875/.070	
9	60271	4	Washer, .312 split lock	
10	60028	2	Screw, .312-18 x 1.00 standard hex, G5	
11	39842	1	Filter, oil	
12	31541	1	Hose, air	
13	41235ZY	2	Spacer, .750OD x .44ID x 1.0 long	
14	60281	2	Screw, .250-20 x .750 standard hex, G5	
15	60206	2	Washer, .375 split lock - hardened	
16	65719	2	Screw, M8-1.25 x 45 standard hex, G10.9	
17	60285	4	Nut, .312-18 hex, G2	
18	10434	1	Hose, air intake	

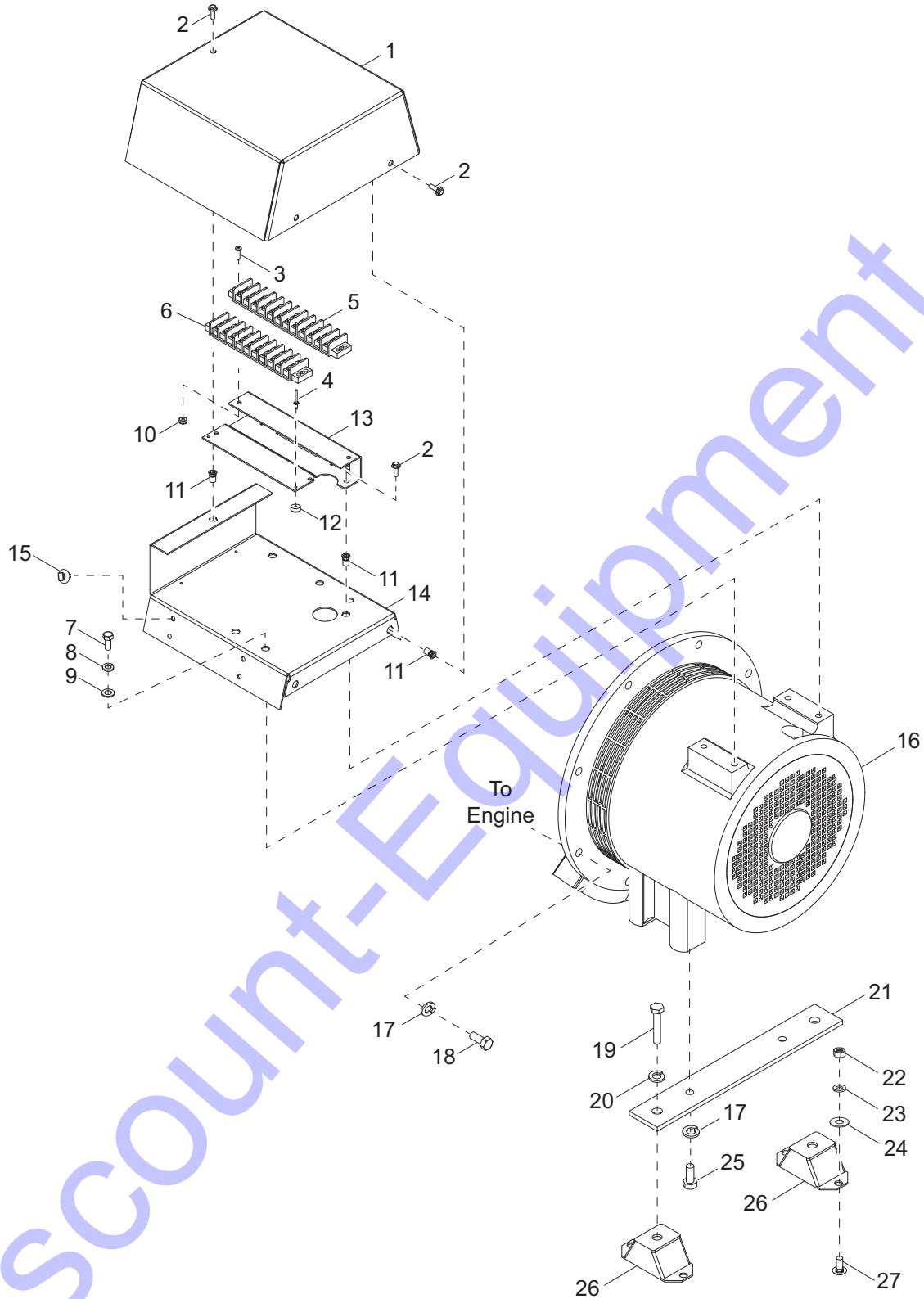
OPTIONAL FEATURES

Battery Disconnect

A	65499	1	Switch lockout lever kit
B	10000008538	1	Bracket, battery disconnect
C	65498	1	Switch, disconnect

Note: Engine and generator parts used in all Generac Mobile Products, LLC equipment carry the Original Equipment Manufacturer (OEM) warranty unless otherwise stated. OEM warranty parts must be purchased through an OEM dealer. Please contact Generac Mobile Products, LLC with questions.

GENERATOR ASSEMBLY



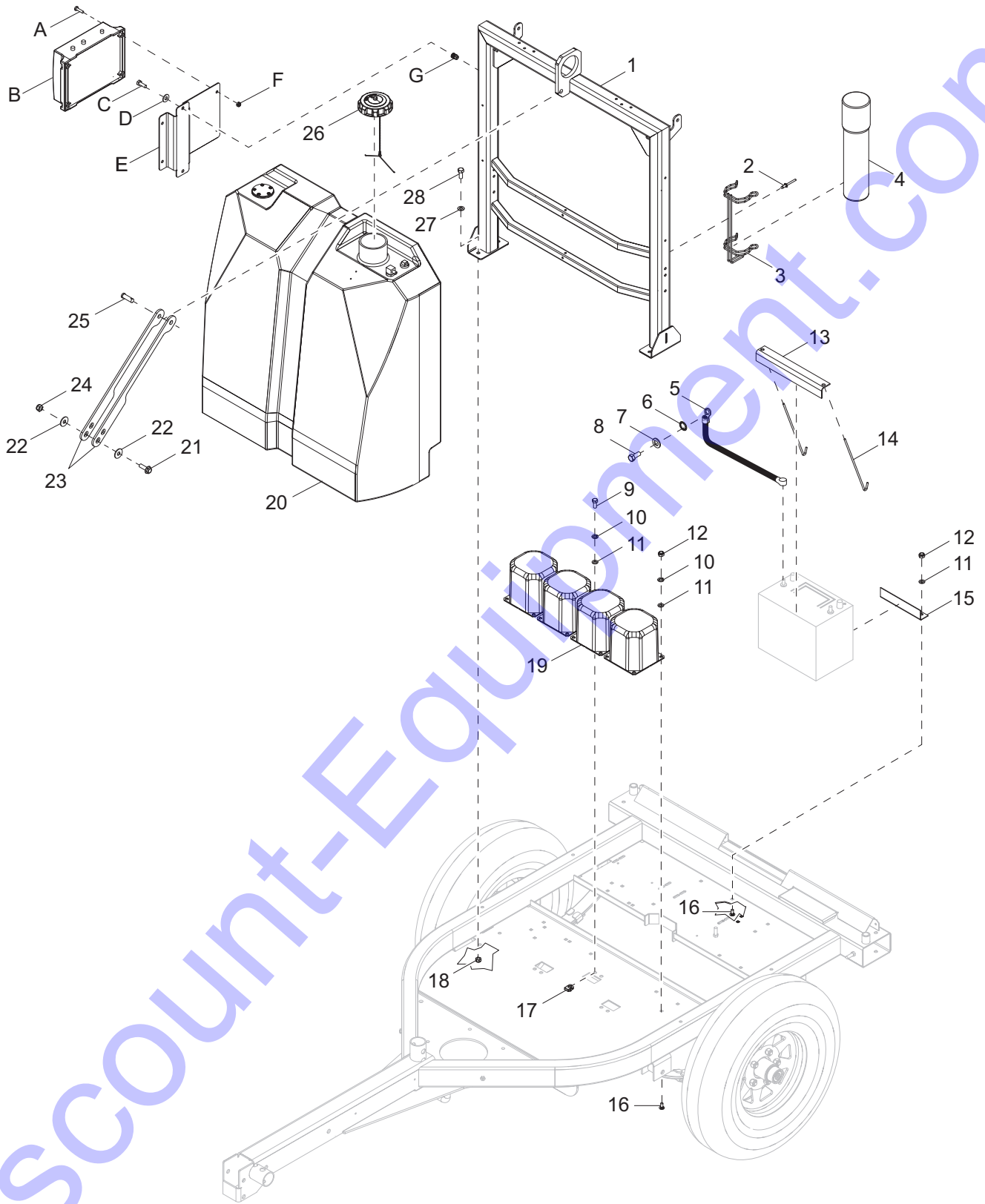
02442

GENERATOR ASSEMBLY

Item	Part No.	Qty	Description	Notes
1	17994B	1	Cover, generator, Marathon	
2	60175	5	Screw, .250-20x.500 serrated flange hex, G5	
3	60062	4	Screw, 10-32 x .750 pan Phillips, G2	
4	60267	2	Rivet, .125 dia x .191 to .270 grip	
5	14139	1	Block terminal - 12 position	
6	14203	1	Block terminal - 10 position	
7	61082	4	Screw, M8-1.25 x 20 serrated flange hex	
8	60271	4	Washer, .312 split lock	
9	60243	4	Washer, .250 flat .735/.060	
10	60061	4	Nut, 10-32 nylock	
11	63231	9	Insert, threaded .250-20 hex .027-.165 grip	
12	15215	2	Rubber bumper	
13	36942B	1	Bracket, terminal strip	
14	54254B	1	Plate, electric junction	
15	66685	8	Mount cable tie, fir tree, .25-.28 dia, .031-.276 grip	
16	10000020581	1	Generator, Marathon, 6kW, 60Hz, cap	
17	60206	8	Washer, .375 split lock	
18	60352	8	Screw, .375-16x1.250 standard hex, G5	
19	60275	2	Screw, .500-13 x 1.00 standard hex, G5	
20	60702	2	Washer, .500 split lock, SS	
21	15045B	1	Bracket, generator mounting	
22	60285	4	Nut, .312-18 hex, G2	
23	60271	4	Washer, .312 split lock	
24	60119	4	Washer, .312 flat .875/.070	
25	60352	2	Screw, .375-16 x 1.250 standard hex, G5	
26	15241	2	Isolator, rubber - 80-200 lb	
27	61066	4	Screw, .312-18 x 1.00 carriage, SS	
--	60168	6	Screw, .312-18 x .750 standard hex, G5	For flex plate mount
--	60166	18	Washer, M8 flat DIN 125 hardened	3 each w/60168

Note: Engine and generator parts used in all Generac Mobile Products, LLC equipment carry the Original Equipment Manufacturer (OEM) warranty unless otherwise stated. OEM warranty parts must be purchased through an OEM dealer. Please contact Generac Mobile Products, LLC with questions.

COMPONENTS TO TRAILER ASSEMBLY



02454

COMPONENTS TO TRAILER ASSEMBLY

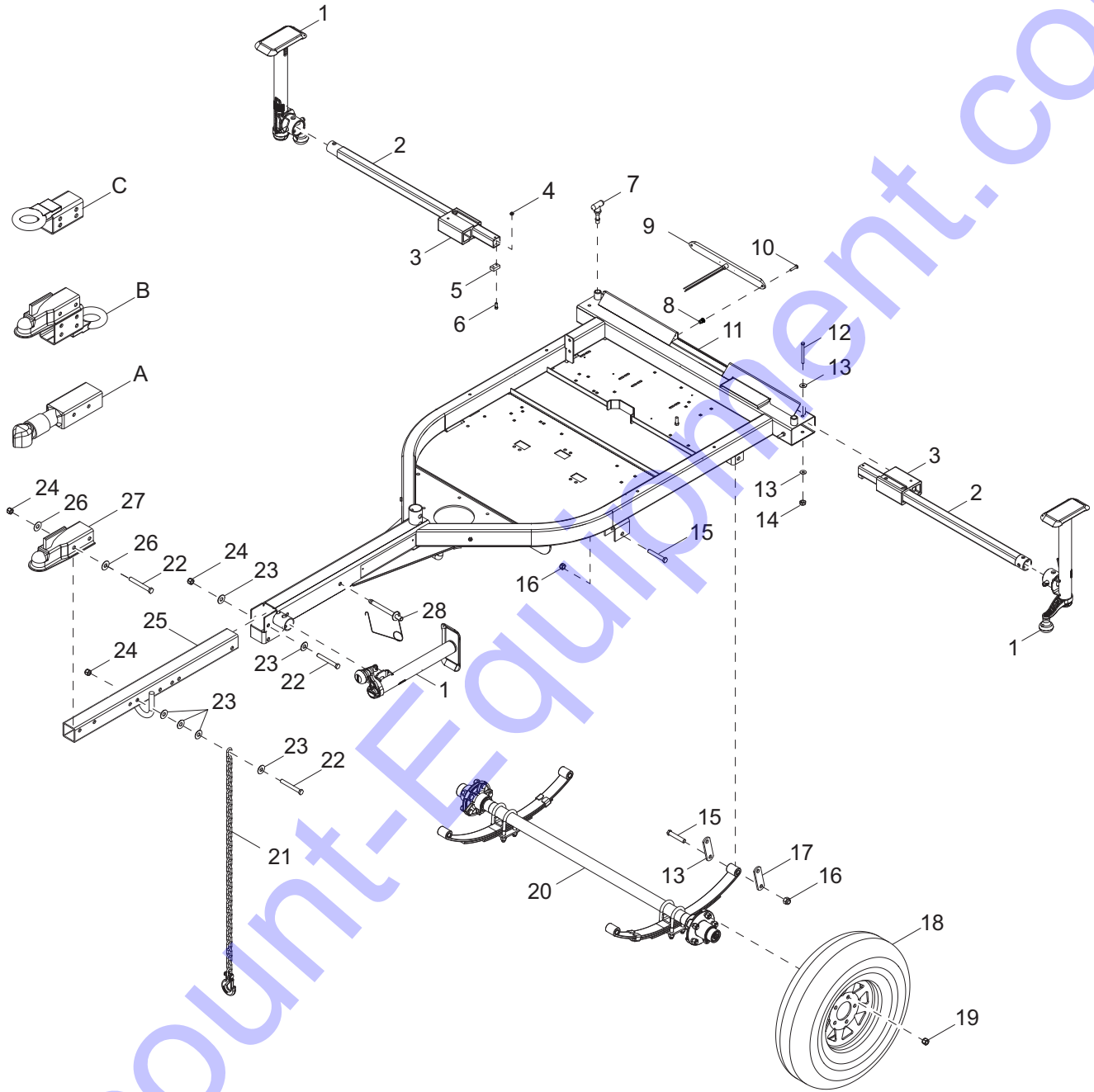
Item	Part No.	Qty	Description	Notes
1	10000023283	1	Weldment, lift support	
2	60195	2	Rivet, .188 dia. x .375 to .500 grip	
3	11222	1	Bracket, manual holder	
4	11121	1	Manual holder tube, black 14 inch	
5	10699	1	Cable, battery - 24" 4GA, .375 lug, black	
6	60747	1	Washer, .375 internal star	
7	60026	1	Washer, M10 split lock	
8	60495	1	Screw, M10-1.25 x 16 hex, G8.8	
9	60028	6	Screw, .312-18 x 1.0 standard hex, G5	
10	60271	8	Washer, .312 split lock	
11	60119	8	Washer, .312 flat .875/.07	
12	60285	3	Nut, .312-18 hex, G2	
13	12924B	1	Angle, battery hold-down	
14	60820	2	Bolt, J - .250-20 x 9.0	
15	17992B	1	Bracket, battery stop	
16	61066	3	Screw, .312-18 x 1.0 carriage, SS	
17	62086	6	Nut, .312-18 U-clip, short-type	
18	60358	4	Nut, .375-16 nylock, G5	
19	10656SRV	4	Assembly, transformer - can and base - 60Hz-MH	
20	69919	1	Tank, fuel - 42 gal with sending unit	
21	60484	2	Screw, .500-13 x 2.0 standard hex, G5	
22	60309	4	Washer, .500 flat 1.060/.090	
23	39660B	2	Bar, chassis support	
24	62221	2	Nut, .500-13 nylock, G5	
25	63325	1	Pin, clevis - .500 dia. x 1.063 UL, ZP	
26	16326	1	Cap, fuel, 3.5 dia., diesel, vent w/tether	
27	60386	4	Washer, .375 flat .993-.064	
28	60352	4	Screw, .375-16 x 1.250 standard hex, G5	
--	50018	5 ft	Hose, fuel - .312 ID, 50 psi, SAE 30R7	
--	60777	2	Clamp, hose - .312 fuel hose, crimp style	
--	14211	4.25 ft	Hose, fuel - .188, 50 psi, SAE 30R7	
--	60778	2	Clamp, hose - .188 fuel hose, crimp style	

OPTIONAL FEATURES

Battery Charger

A	60062	4	Screw, 10-32 x .750 pan Phillips, G2
B	66212	1	Charger, battery 2-5A/1-10A, 3 stage, 2 output
C	60281	2	Screw, .250-20 x .750 hex, G5
D	60243	2	Washer, .250 flat .735/.060
E	73218B	1	Bracket, battery charger
F	60415	4	Nut, 10-32 nylock
G	63132	2	Insert, .250-20 splined, .027-.165

TRAILER ASSEMBLY



02444

TRAILER ASSEMBLY

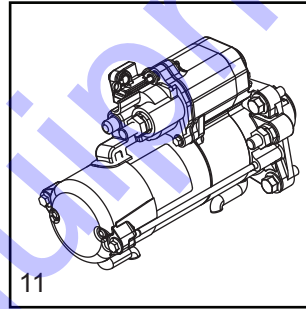
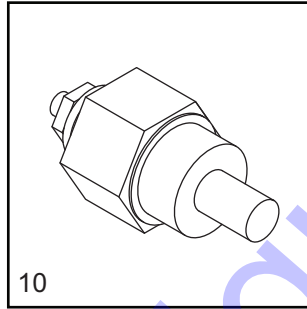
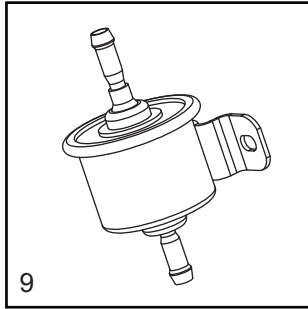
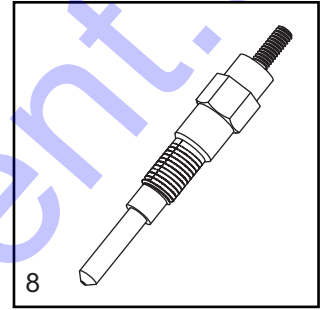
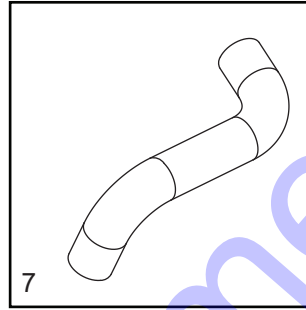
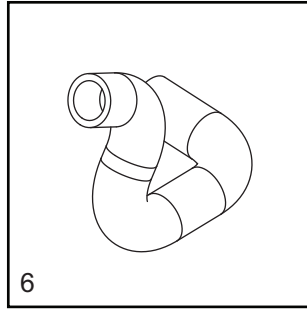
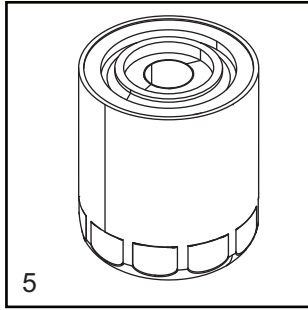
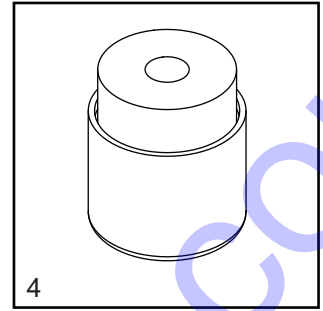
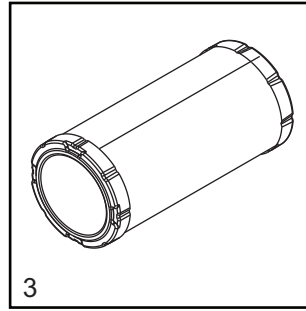
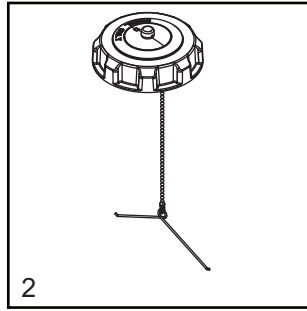
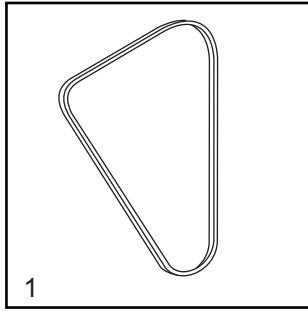
Item	Part No.	Qty	Description	Notes
1	72126	3	Jack, top wind - 1200 lb, tube mounted	
2	70230ZY	2	Weldment, outrigger tube	
3	36869	2	Guide block (molded) - outrigger	
4	60144	4	Nut, .250-20 nylock, G5	
5	72128	2	Pad/stop, wear - outrigger	
6	73196	4	Screw, .250-20 x 2.25 socket head	
7	36890	3	Spring pin, handle	
8	73092	4	Insert, #8-32 .020-.080 grip - close sealed	
9	36960	2	Assembly, tail light	
10	60694	4	Screw, 8-32 x .750 pan Phillips	
11	10000021817	1	Weldment, lt chassis	
12	60404	2	Screw, .312-18 x 4.00 standard hex, G5	
13	60119	4	Washer, .312 flat .875/.070	
14	60303	2	Nut, .312-18, nylock, G2	
15	60503	6	Screw, shackle, .562-18 x 3.00 standard hex, G5	
16	60504	6	Nut, .562-18 lock hex, G5	
17	19637	4	Plate, shackle bracket - 3.125"	
18	15976B	2	Wheel, ST175/8013 - 1360 lb	
19	60096	10	Nut, .500-20 lug, G5	
20	34760	1	Axle, 2200lb 47TC 35SC	
21	23367	2	Chain, safety - 7800 lbs rated	
22	50215	5	Screw, .500-13 x 4.00 standard hex, G5	
23	60416	10	Washer, .500 flat 1.375/.090	
24	62221	5	Nut, .500-13 nylock, G5	
25	17969B	1	Weldment, tilt tongue	
26	60309	4	Washer, .500 flat 1.060/.090	
27	16830	1	Coupler, 2.00 ball/2.50 channel	
28	33943	2	Pin, locking .500 x 3.50	
--	68348	1	Harness, trailer wiring, tandem tow	
--	68324	1	Harness, trailer enclosure front	
--	10000020727	1	Assembly, harness extension loomed	

OPTIONAL FEATURES

Hitch Options

A	13003B	1	Coupler, 2.00 ball/3.00 channel, Bulldog
B	34792ZC	1	Weldment, combination hitch - 2.50 tongue
C	16835B	1	Weldment, lunette ring 3.00 ID - 2.50 tongue
--	65548	1	Adapter, 4 pin flat to 4 pin flat x 12.00

RECOMMENDED SPARE PARTS - ENGINE AND SERVICE KITS

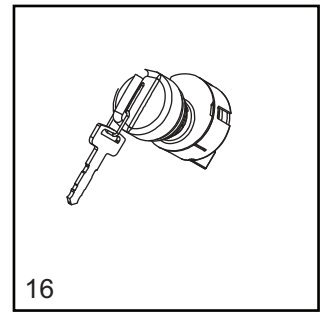
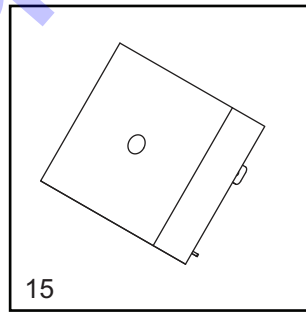
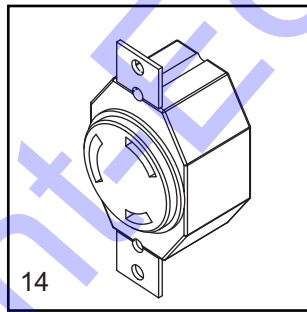
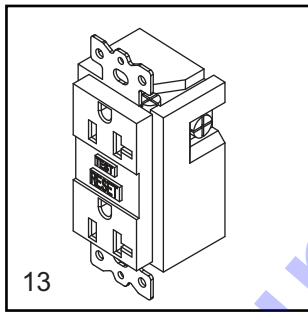
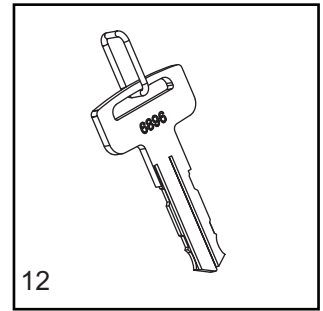
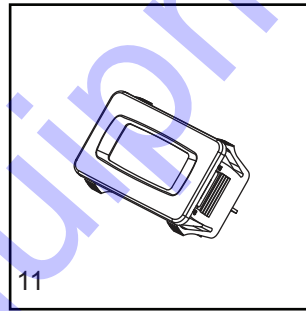
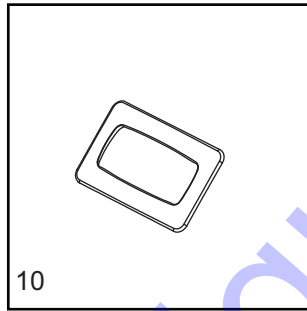
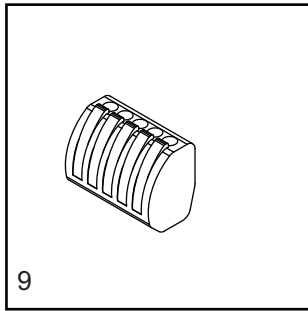
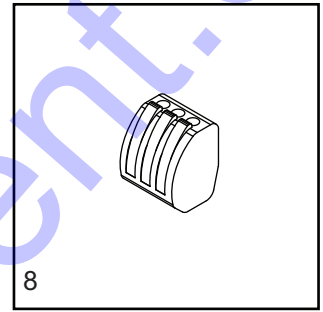
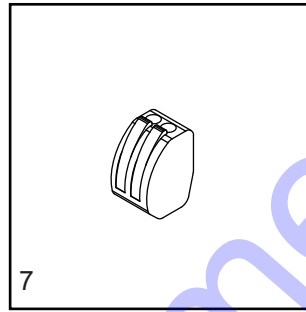
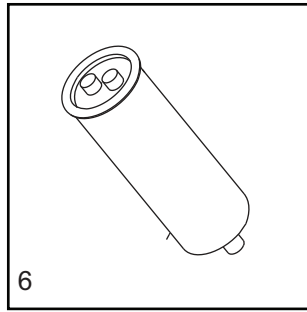
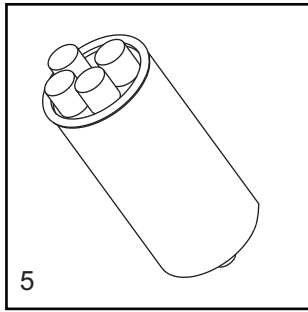
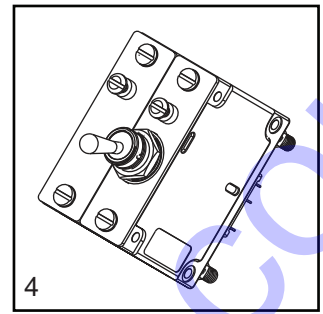
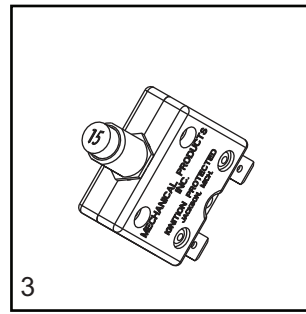
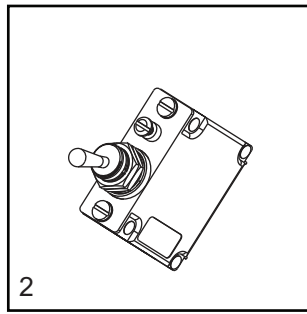
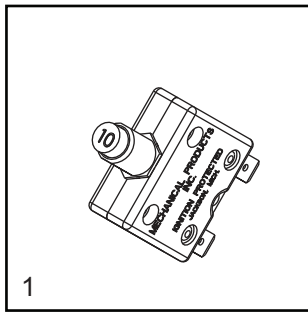


RECOMMENDED SPARE PARTS - ENGINE AND SERVICE KITS

ENGINE

1. Belt	39839
2. Cap, fuel tank with lanyard	16326
3. Filter, air (element).....	16444
4. Filter, fuel element	39840
5. Filter, oil	39842
6. Hose, lower radiator	31542
7. Hose, upper radiator.....	31543
8. Plug, glow	16693
9. Pump, fuel	12994
10. Sender, coolant temp.....	12873
11. Starter	39843

RECOMMENDED SPARE PARTS - ELECTRICAL

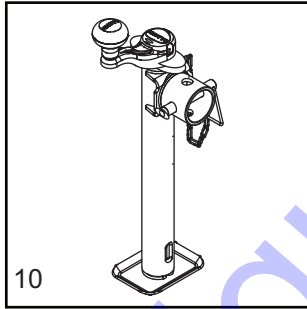
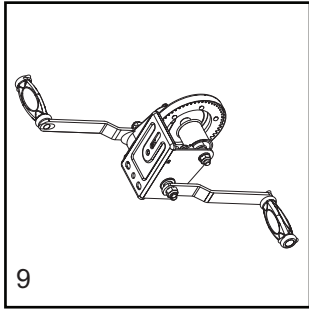
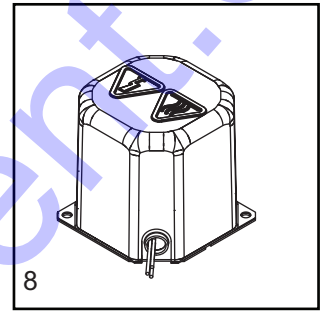
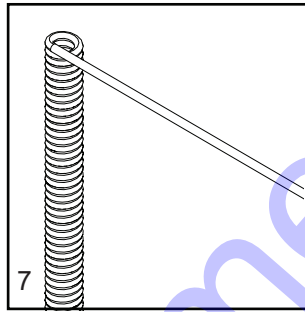
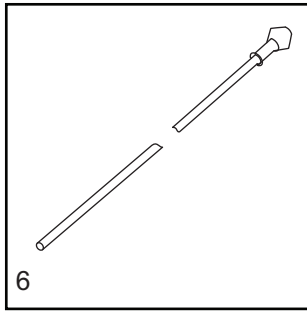
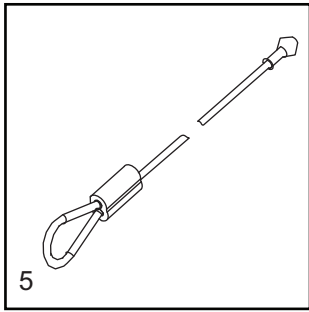
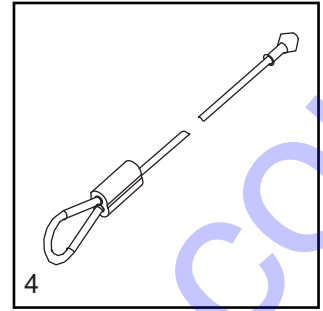
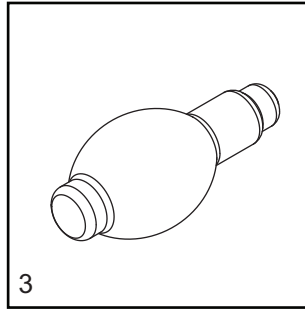
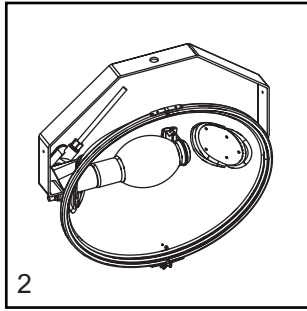
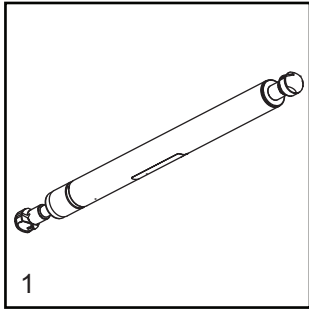


RECOMMENDED SPARE PARTS - ELECTRICAL

ELECTRICAL

1. Breaker, 10A, 240V, 1 pole, push button	36937
2. Switch, light - 15A	36880
3. Breaker, 15A, 120V, 1 pole, push button, 8kW	36935
4. Breaker, 30A, 250A, 2 pole, 6kW	36975
5. Capacitor, 24 μ F, dual	65959
6. Capacitor, 25 μ F, 440V, 6kW	36980
7. Connector, 2 position (qty - 4)	66100
8. Connector, 3 position (qty - 2)	66101
9. Connector, 5 position (qty - 1)	66102
10. Gasket, hour meter	36944
11. Gauge, hour meter	36886
12. Key (set of two)	37182
13. Receptacle, 120V/20A GFI	14130
14. Receptacle, 240V/30A twist	14137
15. Relay, 10A SPDT, 15 second time delay	14201
16. Switch, key	36882

RECOMMENDED SPARE PARTS - MISC



RECOMMENDED SPARE PARTS - MISC

ENCLOSURE

1. Gas shock..... 35137

MAST

2. Assembly, light fixture, hard wired 1000008620

3. Bulb 1000008611

4. Cable, 79.75 in 31248

5. Cable, 78 in 31277

6. Cable, 144 in 31247

7. Coil cord 39650

8. Transformer (incl. cover)..... 10656SRV

9. Winch, manual, includes dual handle..... 72127

JACKS

10. Jack, top wind, 1200 lb 72126

Discount Equipment

Discount-Equipment.com is your online resource for commercial and industrial quality parts and equipment sales.

Locations:

Florida (West Palm Beach): [561-964-4949](tel:561-964-4949)

Outside Florida TOLL FREE: [877-690-3101](tel:877-690-3101)

Need parts? Check out our website at www.discount-equipment.com

Can't find what you need?

Click on this link: <http://www.discount-equipment.com/category/5443-parts/> and fill out the request form.

Please have the machine model and serial number available in order to help us get you the correct parts. One of our experienced staff members will get back to you with a quote for the right part that your machine needs.

We sell worldwide for the brands: Genie, Terex, JLG, MultiQuip, Mayco, Toro/Stone, Diamond Products, Magnum, Airman, Mustang, Power Blanket, Nifty Lift, Atlas Copco, Chicago Pneumatic, Allmand Brothers, Essick, Miller Spreader, Skyjack, Lull, Skytrak, Tsurumi, Husquvarna/Target, Whiteman-Concrete/Mortar, Stow-Concrete/Mortar, Baldor, Wacker, Sakai, Snorkel, Upright, Mi-T-M, Sullair, Neal, Basic, Dynapac, MBW, Weber, Bartell, Bennar Newman, Haulotte, Ditch Runner, Blaw-Knox, Himoina, Best, Buddy, Crown, Edco, Wyco, Bomag, Laymor, Terremite, Barreto, EZ Trench, Takeuchi, Basic, Bil-Jax, Curtis, Gehl, Heli, Honda, ICS/PowerGrit, Puckett, Waldon, ASV, IHI, Partner, Imer, Clipper, MMD, Koshin, Rice, Gorman Rupp, CH&E, Cat Pumps, Comet, General Pump, Giant, AMida, Coleman, NAC, Gradall, Square Shooter, Kent, Stanley, Tamco, Toku, Hatz, Kohler, Robin, Wisconsin, Northrock, Oztec, Toker TK, Rol-Air, Small Line, Wanco, Yanmar

New Equipment - Used Equipment - Rental Equipment - Parts and Accessories

Discount Equipment

www.discount-equipment.com

561-964-4949

Parts: wbparts@Discount-Equipment.com

Sales: info@Discount-Equipment.com



www.discount-equipment.com

Part No. 76182 Rev. B 01/05/2018

©2018 Generac Mobile Products, LLC
All rights reserved.

Specifications are subject to change without notice.
No reproduction allowed in any form without prior written consent
from Generac Mobile Products, LLC.

GENERAC
**MOBILE
PRODUCTS**