



SERVICE/PARTS MANUAL

MODELS: 655PMP & 855PMP



PLASTIC DRUM CHAMPION® PLASTER/MORTAR MIXER

A 100% employee-owned American manufacturer

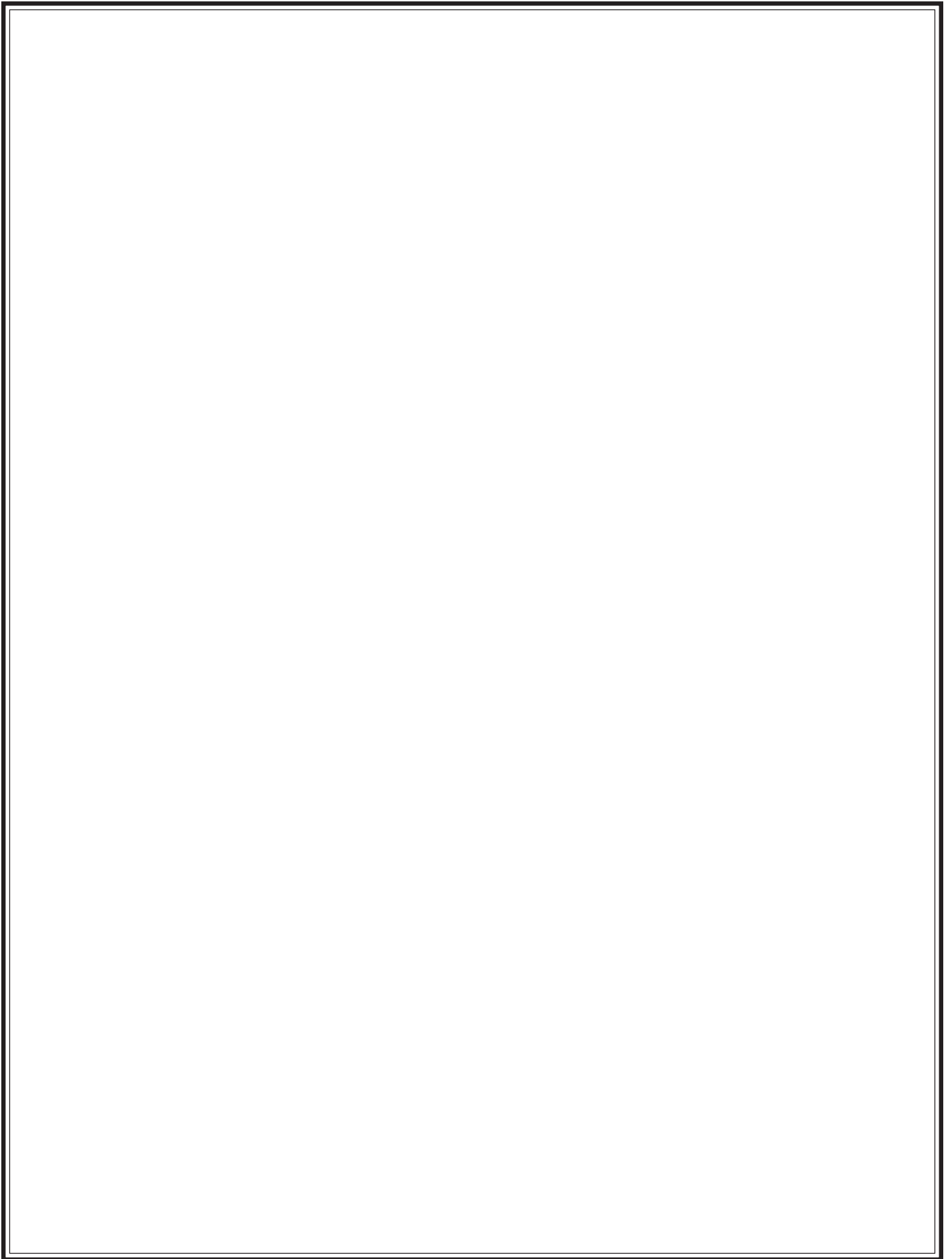


TABLE of CONTENTS

655PMP, 855PMP

FOREWORD	4
LIMITED WARRANTY	5
TECHNICAL DATA	6 -9
Specifications	6
Machine Sound & Vibration Measurements	7
Imperial Torque Chart	8
Metric Torque Chart	9
HEALTH & SAFETY	10 - 15
OPERATION	16
Location and Use of Controls	16
MAINTENANCE	17 - 24
Cleaning	17
Lubrication	17
Hardware	17
Towing	18
Bull Gear Assembly	18
Electric Wiring	19-20
Maintenance Schedule	21
Maintenance Chart	22
Bearing & Seal Installation Instructions	23
HARDWARE IDENTIFICATION	24
EXPLODED DIAGRAM AND PARTS LIST	25 - 49
Frame and Drum Assembly	26-29
Paddle Assembly/Blade and Paddle Sets	30-31
Clutch Lever Assembly	32-33
Electric Motor Drive Train	34-37
Gas Engine Drive Train	38-41
Optional Spring Axle Assembly	42-43
Standard Axle Assembly	44-45
Trailer Lights Assembly Option	46-47
Decal Identification	48-49
CALIFORNIA PROPOSITION 65 WARNING	IBC

**MANUFACTURED UNDER ONE OR MORE OF THE FOLLOWING PATENTS AND OTHERS
PENDING: 3761058, 3905519, 3931748, 3932006, 4043540, 4180281.**

Discount Equipment

Discount Equipment Rental is your online resource for commercial and industrial quality equipment sales and rentals. We sell worldwide for the brands Genie, Terex, Stihl, JLG, Multiquip, Mayco, Stone, Diamond Products, Airman, Mustang, Power Blanket. We have complete rental locations throughout Florida.

Locations:

West Palm Beach – [561-964-4949](tel:561-964-4949)

Orlando – [407-291-3162](tel:407-291-3162)

Tampa – [813-248-2848](tel:813-248-2848)

Need parts? Check out our website at www.discount-equipment.com

Can't find what you need? Click on this link <http://www.discount-equipment.com/category/5443-parts/> and fill out the request form. Make sure you have your machines model and serial number available in order to help us get you the correct parts. One of our experienced staff members will get back to you with a quote for the right part that your machine needs.

Limited Warranty

The Manufacturer warrants that products manufactured shall be free from defects in material and workmanship that develop under normal use for a period of 90 days for concrete vibrators and electric pumps, one year for Rhino®, Bulldog®, WolfPac Rollers™, trowels, Stompers®, saws, forward plates, engine powered pumps, Lift Jockey™, Mortar Buggy™ and 6 months for all other products from the date of shipment. The foregoing shall be the exclusive remedy of the buyer and the exclusive liability of the Manufacturer. Our warranty excludes normal replaceable wear items, i.e. gaskets, wear plates, seals, O-rings, V-belts, drive chains, clutches, etc. Any equipment, part or product which is furnished by the Manufacturer but manufactured by another, bears only the warranty given by such other manufacturer. (The Manufacturer extends the warranty period to "Lifetime" for the drum bearings and seals for the mortar mixers, and agrees to furnish, free of charge, the bearings and seals only upon receipt of the defective parts. The warranty is two years for eccentric bearings on the forward plate compactors, mortar and plaster mixer drums, trowel gearboxes and five years on the Bulldog trench roller eccentric bearings.) A Warranty Evaluation Form must accompany all defective parts. Warranty is voided by product abuse, alterations, and use of equipment in applications for which it was not intended, use of non-manufacturer parts, or failure to follow documented service instructions. The foregoing warranty is exclusive of all other warranties whether written or oral, expressed or implied. No warranty of merchantability or fitness for a particular purpose shall apply. The agents, dealer and employees of Manufacturer are not authorized to make modification to this warranty, or additional warranties binding on Manufacturer. Therefore, additional statements, whether oral or written, do not constitute warranty and should not be relied upon.

The Manufacturer's sole responsibility for any breach of the foregoing provision of this contract, with respect to any product or part not conforming to the Warranty or the description herein contained, is at its option (a) to repair, replace or refund such product or parts upon the prepaid return thereof to location designated specifically by the Manufacturer. Product returns not shipped prepaid or on an economical transportation basis will be refused (b) as an alternative to the foregoing modes of settlement - the Manufacturer's dealer to repair defective units with reimbursement for expenses, except labor, and be reviewed with the Manufacturer prior to repair. A Warranty Evaluation Form must accompany all warranty claims.

Except as set forth hereinabove and without limitation of the above, there are no warranties or other affirmations which extends beyond the description of the products and the fact hereof, or as to operational efficiency, product reliability or maintainability or compatibility with products furnished by others. In no event whether as a result of breach of contract or warranty or alleged negligence, shall the Manufacturer be liable for special or consequential damages including but not limited to: Loss of profits or revenues, loss of use of the product or any associated product, cost of capital, cost of substitute products, facilities or services or claims of customers.

No claim will be allowed for products lost or damaged in transit. Such claims should be filed with the carrier within fifteen days.

Effective July 2002.

TECHNICAL DATA

Specifications

MODEL	655PMP	855PMP
Origin	U.S.A.	U.S.A.
Dimensions Operating Wt. lbs/Kg	550 / 250	605 / 275
Batch Capacity (Bags)	1 1/2 - 2 bags	2 1/2 - 3 bags
Batch Capacity cu. ft. / cu. m.	6 / .17	8 / .23
Total Volume cu. ft. / cu. m.	6.9 / .20	9.0 / .25
L x W x H in. / cm	64 x 34 x 54 / 163 x 86 x 137	76 x 34 x 54 / 193 x 86 x 137
Operating System Engine	5 hp B&S / 3.7 kw 5.5 hp Honda / 4.10 kw 6 hp Robin / 4.5 kw 8 hp B&S / 6.0 kw 8 hp B&S I/P / 6.0 kw 8.5 hp Robin / 6.3 kw 8 hp B&S / 6.0 kw 8 hp Honda / 6.0 kw 8.5 hp Robin / 6.3 kw 8 hp B&S / 6.0 kw 8 hp Honda / 6.0 kw 1 1/2 hp / 1.1 kw Electric	8 hp B&S / 6.0 kw 8 hp B&S I/P / 6.0 kw 8.5 hp Robin / 6.3 kw 8 hp B&S / 6.0 kw 8 hp Honda / 6.0 kw 10 hp B&S I/C / 7.5 kw 2 hp / 1.5 kw Electric 3 hp / 2.2 kw Electric
Drive & Clutch	V-Belt to Gears Front Post Hand Clutch	V-Belt to Gears Front Post Hand Clutch
Standard Features Drum	polyethylene	polyethylene
Drum Lock in. / mm	automatic (patented)	automatic (patented)
Paddles: Number	4	4
Mixing Action	Simple figure 8	Simple figure 8
Paddle Shaft	1 1/2" / 38.1 mm round	1 1/2" / 38.1 mm round
Frame/Axle: Tow Pole	Post Gussett, pintle, pin or ball hitch	Post Gussett, pintle, pin or ball hitch
Axle - extendible	34" - 46" / 86 - 117 cm	34" - 46" / 86 - 117 cm
Tires	4.8 x 12 (high speed)	B78 x 13 (high speed)
Cowl:	16 galv., stainless steel hinge, diamond shaped expanded steel vent panels	16 galv., stainless steel hinge, diamond shaped expanded steel vent. panels
Other Features: Bag Splitter	standard	standard
Safety Guard	lift away, heavy-duty	lift away, heavy-duty
Guard Lifter	standard (patented)	standard (patented)
Safety Chain	standard	standard
Warranty: Warranty Machine	6 months	6 months
Warranty Drum Bearing	lifetime on patented quadruple bearings and seals	lifetime on patented quadruple bearings and seals
Drum Warranty	2 years	2 years
Options:	light option	spring axle light option

TECHNICAL DATA

Machine Sound & Vibration Measurements

Sound Pressure Values as measured are per the following:	
Noise 1	Model/Configuration
Sound Pressure	855PMP 8hp Honda
Tow pole end	92dBA
Cowl end right side (exhaust)	98dBA
Cowl end back of unit	98dBA
Cowl end left side	94dBA
Sound Pressure measurements were taken with Simpson model 886-2 type 2 meter, calibrated 2/21/97	
Acceleration measurements were taken with Quest Tech model VI-100 meter, calibrated 4/17/96	
Sound and vibration measurements obtained with machine operating at maximum.	
Test date was 7/29/98 with test conditions at 23 degrees Celsius	

\\mktg\stone1\netal\pm5\enr\bonnie\bln\sound_pm.doc

TECHNICAL DATA

Imperial Torque Chart

SAE GRADE 5 Coarse Thread

SIZE	PLATED	
1/4 – 20 (.250)	6 ft. lbs.	8 Nm
5/16 – 18 (.3125)	13 ft. lbs.	18 Nm
3/8 – 16 (.375)	23 ft. lbs.	31 Nm
7/16 – 14 (.4375)	37 ft. lbs.	50 Nm
1/2 – 13 (.500)	57 ft. lbs.	77 Nm
9/16 – 12 (.5625)	82 ft. lbs.	111 Nm
5/8 – 11 (.625)	112 ft. lbs.	152 Nm
3/4 – 10 (.750)	200 ft. lbs.	271 Nm
7/8 – 9 (.875)	322 ft. lbs.	436.5 Nm
1 – 8 (1.000)	483 ft. lbs.	655 Nm

SAE GRADE 8 Coarse Thread

SIZE	PLATED	
1/4 – 20 (.250)	9 ft. lbs.	12 Nm
5/16 – 18 (.3125)	18 ft. lbs.	24 Nm
3/8 – 16 (.375)	33 ft. lbs.	45 Nm
7/16 – 14 (.4375)	52 ft. lbs.	70 Nm
1/2 – 13 (.500)	80 ft. lbs.	108 Nm
9/16 – 12 (.5625)	115 ft. lbs.	156 Nm
5/8 – 11 (.625)	159 ft. lbs.	215 Nm
3/4 – 10 (.750)	282 ft. lbs.	382 Nm
7/8 – 9 (.875)	454 ft. lbs.	615 Nm
1 – 8 (1.000)	682 ft. lbs.	925 Nm

SAE GRADE 5 Fine Thread

SIZE	PLATED	
1/4 – 28 (.250)	7 ft. lbs.	10Nm
5/16 – 24 (.3125)	14 ft. lbs.	19 Nm
3/8 – 24 (.375)	26 ft. lbs.	35 Nm
7/16 – 20 (.4375)	41 ft. lbs.	56 Nm
1/2 – 20 (.500)	64 ft. lbs.	87 Nm
9/16 – 18 (.5625)	91 ft. lbs.	123 Nm
5/8 – 18 (.625)	128 ft. lbs.	173 Nm
3/4 – 16 (.750)	223 ft. lbs.	302 Nm
7/8 – 14 (.875)	355 ft. lbs.	481 Nm
1 – 12 (1.000)	529 ft. lbs.	717 Nm
1 – 14 (1.000)	541 ft. lbs.	733 Nm

SAE GRADE 8 Fine Thread

SIZE	PLATED	
1/4 – 28 (.250)	10 ft. lbs.	14Nm
5/16 – 24 (.3125)	20 ft. lbs.	27 Nm
3/8 – 24 (.375)	37 ft. lbs.	50 Nm
7/16 – 20 (.4375)	58 ft. lbs.	79 Nm
1/2 – 20 (.500)	90 ft. lbs.	122 Nm
9/16 – 18 (.5625)	129 ft. lbs.	175 Nm
5/8 – 18 (.625)	180 ft. lbs.	244 Nm
3/4 – 16 (.750)	315 ft. lbs.	427 Nm
7/8 – 9 (.875)	501 ft. lbs.	679 Nm
1 – 12 (1.000)	746 ft. lbs.	1011 Nm
1 – 14 (1.000)	764 ft. lbs.	1036 Nm

TECHNICAL DATA

Metric Torque Chart

Property Class 8.8

ZINC-PLATED

SIZE	Coarse Thread		Fine Thread	
	Nm	ft. lbs.	Nm	ft. lbs.
M6	9.9	7	10	7
M8	24	18	25	18
M10	48	35	49	36
M12	83	61	88	65
M14	132	97	140	103
M16	200	148	210	155
M20	390	288	425	313
M24	675	498	720	531

Property Class 10.9

ZINC-PLATED

SIZE	Coarse Thread		Fine Thread	
	Nm	ft. lbs.	Nm	ft. lbs.
M6	14	10	14	10
M8	34	25	35	26
M10	67	49	68	50
M12	117	86	125	92
M14	185	136	192	142
M16	285	210	295	218
M20	550	406	600	443
M24	950	701	1000	738

Property Class 12.9

ZINC-PLATED

SIZE	Coarse Thread		Fine Thread	
	Nm	ft. lbs.	Nm	ft. lbs.
M6	16.5	12	16.5	12
M8	40	30	42	31
M10	81	60	82	60
M12	140	103	150	111
M14	220	162	235	173
M16	340	251	350	258
M20	660	487	720	531
M24	1140	841	1200	885

Conversion Factor: 1 ft. lb. = 1.3558 Nm

SAFETY

These machines are designed to carry out the function of mixing material of the non-cohesive, bituminous and granular varieties.

If used correctly, they will provide an effective and safe means of mixing and meet the appropriate performance standards.

It is essential that the operator of the machine is adequately trained in its safe operation, be authorized to operate it, and have sufficient knowledge of the machine to ensure that it is in full working order, before being put to use.

HEALTH & SAFETY

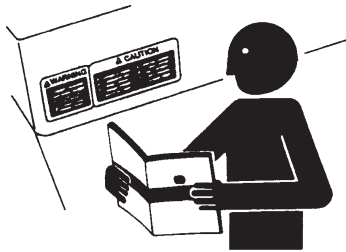
Safety Precautions

Before using this equipment, study this entire manual to become familiar with its operation. Do not allow untrained or unauthorized personnel, especially children, to operate this equipment. Use only factory authorized parts for service.

When warning decals are destroyed or missing, contact the Manufacturer immediately at 1-800-888-9926 for replacement. For the safety of yourself and others, it is imperative that the following rules are observed. Failure to do so may result in serious injury or death.

FOLLOW SAFETY INSTRUCTIONS

Carefully read all safety messages and decals in this manual and on your machine safety signs. Keep decals in good condition. Replace missing or damaged decals. Be sure new equipment components and repair parts include the current safety signs. Replacement safety signs and decals are available through your dealer.



Learn how to operate the machine and how to use controls properly. Do not let anyone operate without instruction.

Keep your machine in proper working condition. Unauthorized modifications to the machine may impair the function and/or safety and affect machine life.

If you do not understand any part of this manual and need assistance, contact your dealer.

▲ DANGER

▲ WARNING

▲ CAUTION

UNDERSTAND SIGNAL WORDS

A signal word – DANGER, WARNING, or CAUTION – is used with the safety-alert symbol. DANGER identifies the most serious hazards.

DANGER or WARNING safety signs are located near specific hazards. General precautions are listed on CAUTION safety signs. CAUTION also calls attention to safety messages in this manual.



This notation appears before warnings in the text. It means that the step which follows must be carried out to avoid the possibility of personal injury or death. These warnings are intended to help the technician avoid any potential hazards encountered in the normal service procedures. We strongly recommend that the reader takes advantage of the information provided to prevent personal injury or injury to others.

HEALTH & SAFETY

Safety Precautions

USE COMMON SENSE WHEN HANDLING FUELS



- Transport and handle fuel only when contained in approved safety container.
- Do not smoke when refueling or during any other fuel handling operation.
- Do not refuel while the engine is running or while it is still hot.
- If fuel is spilled during refueling, wipe it off from the engine immediately and discard the rag in a safe place.
- Do not operate the equipment if fuel or oil leaks exist - repair immediately.
- Never operate this equipment in an explosive atmosphere.



- Always use the proper size grounded extension cord, forming to the National Electric Code and Local Ordinances.
- Inspect all extensions and electrical cords for cuts, frayed wire and broken connectors before use. Do not use cords if not in good condition.
- Do not route extension cords through standing water.
- Do not operate the mixer in standing water.
- When cleaning the mixer, never spray water over the motor.



HOT SURFACES

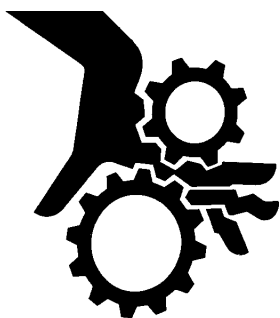
- Avoid contact with hot exhaust systems and engines.
- Allow all components in the engine compartment to cool before performing any service work.

WARNING

- Never leave mixer unattended while running.
- Mix only Motor, Plaster, Terrazzo, Fireproofing and Grout.
- Do Not operate machine if rocks, stones, ice or frozen materials are in mix and/or in drum of mixer. The machine could jam, causing damage to the equipment or injury to the operator.

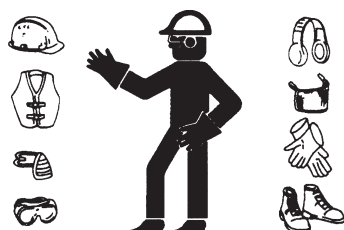
HEALTH & SAFETY

Safety Precautions



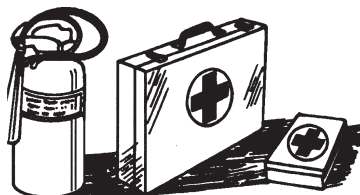
- Never perform any work on the mixer while it is running.
- Before working on the mixer, stop the engine and disconnect the spark plug wire(s) to prevent accidental starting. On electric models, disconnect the electric cord at the mixer.
- Keep cowl closed during the operation, close cowl immediately after starting.
- Keep hands, clothing and jewelry away from all moving parts.
- Keep all guards in place, including drum guards.
- Never stick your hands or any solid object into the drum while the mixer is in operation.

WEAR PROTECTIVE CLOTHING



- Wear close fitting clothing and safety equipment appropriate to the job.
- Prolonged exposure to loud noise can cause impairment or loss of hearing.
- Wear a suitable hearing protective device such as earmuffs or earplugs to protect against objectionable or uncomfortable loud noises.
- Operating equipment safely requires the full attention of the operator. Do not wear radio or music headphones while operating machine.

PREPARE FOR EMERGENCIES



- Be prepared if a fire starts.
- Keep a first aid kit and fire extinguisher handy.
- Keep emergency numbers for doctors, ambulance service, hospital, and fire department near your telephone.

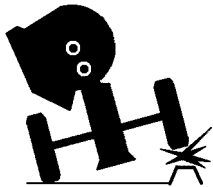
HEALTH & SAFETY

Safety Precautions



Warning-Eye Protection

- Always wear splash goggles when operating mixer.
-



Warning-Towing

- Warning: Do not tow the mixer with the drum in the dump position. Mixer may become unstable and tip over when hitting a curb, pothole, or other obstruction.



- Warning: Always properly attach safety chains before mixer is towed. Maximum towing speed 55 m.p.h. (90 km/hr). Reduce speed according to highway conditions.
-



- Starting fluid (ether) is highly flammable, do not use or an explosion or fire may result.
-



- Never operate unit in a poorly ventilated or enclosed area.
- Avoid prolonged breathing of exhaust gases.
- Engine exhaust fumes can cause sickness or death.

HEALTH & SAFETY

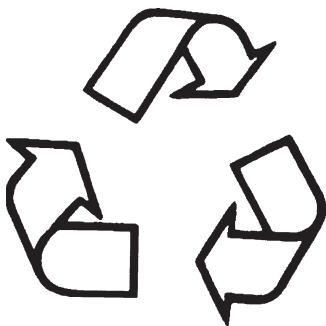
Safety Precautions



PRACTICE SAFE MAINTENANCE

- Understand service procedure before doing work. Keep area clean and dry.
- Never lubricate, service or adjust machine while it is moving. Keep hands, feet, and clothing from power-driven parts. Disengage all power and operate controls to relieve pressure. Lower equipment to the ground. Stop the engine. Remove the key. Allow machine to cool.
- Securely support any machine elements that must be raised for service work.
- Keep all parts in good condition and properly installed. Fix damage immediately. Replace worn or broken parts. Remove any buildup of grease, oil, or debris.
- Disconnect battery ground cable (-) before making adjustments on electrical systems or welding on machine.

DISPOSE OF WASTE PROPERLY



- Improperly disposing of waste can threaten the environment and ecology. Potentially harmful waste used with equipment include such items as oil, fuel, coolant, brake fluid, filters, and batteries.
- Use leakproof containers when draining fluids. Do not use food or beverage containers that may mislead someone into drinking from them.
- Do not pour waste onto the ground, down a drain, or into any water source.
- Air conditioning refrigerants escaping into the air can damage the Earth's atmosphere. Government regulations may require a certified air conditioning service center to recover and recycle used air conditioning refrigerants.
- Inquire on the proper way to recycle or dispose of waste from your local environmental or recycling center.

SAFETY DECALS - FOR THE SAFETY OF YOURSELF AND OTHERS REPLACE ANY DAMAGED OR MISSING SAFETY DECALS.

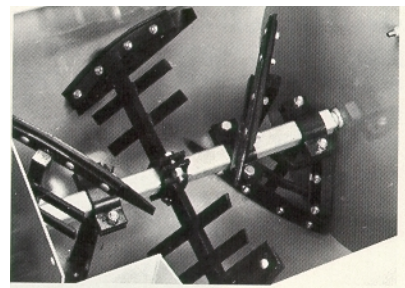
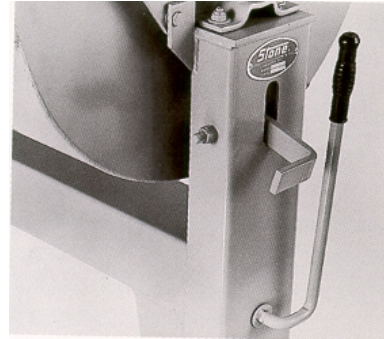
- Warning Decal (SN-91) P/N 55010
- Warning Decal (SN-92) P/N 55011
- Safety Instruction Decal (SN-67A) P/N 55013
- Warning Decal (SN-8) P/N 55014
- Safety Chain Decal (Front Post, SN-66) P/N 55121

OPERATION

Location and Use of Controls

Before operating this unit, it is important to familiarize yourself, and any other personnel who will be using it, with the location and proper use of the controls to insure safe and efficient operation.

- A. Always make sure that the drum latch is in the lock position (down) before starting machine. With engine running, turn clutch lever to the right to turn paddles or to the left to stop.
- B. To dump mix from drum, stop paddles, move drum latch up and pull dump handle down. Always use caution when dumping mix.
- C. Always grease drum seals (at both ends) as recommended in the maintenance chart. The grease purges dirt, prolonging bearing life.
- D. Always keep drum and paddles clean. Never run machine with hardened mix or foreign objects in drum. Doing so damages paddles and/or engine.



MAINTENANCE

Cleaning/Lubrication/Hardware

CLEANING

WARNING

FAILURE TO FOLLOW CLEANING INSTRUCTION AND/OR ROTATION OF DRUM WITHOUT GUARD LIFTER CONNECTED CAN RESULT IN SERIOUS INJURY.

For consistent performance, long life and continued high quality mixing of plaster or mortar, thoroughly clean the mixer inside and out at the end of each day's operation. To prevent lumps of dried plaster from forming and contaminating future batches of plaster or mortar, do not allow build up materials to form on drum guards, around paddles or anywhere inside the drum.

- Before cleaning, shut the engine or motor and disconnect the spark plug wire or electric cord to prevent accidental starting.
- Keep drum guard closed.
- Always keep guard lifter connected.
- Keep drum in upright, mixing position.
- Spray mixer with water before mix dries to remove accumulation.
- Rotate drum to dump position to remove debris.

DO NOT beat on the drum with a shovel, hammer or other device to break up accumulations of dried mix, as this will dent and damage the drum.

WARNING

NEVER POUR OR SPRAY WATER OVER THE ENGINE OR MOTOR.

NEVER PUT HANDS OR ANY OBJECT INTO THE DRUM WHILE THE ENGINE OR MOTOR IS RUNNING.

ALWAYS DISCONNECT THE SPARK PLUG WIRE OR ELECTRIC CORD WHEN CLEANING INSIDE DRUM.

ALWAYS MAKE SURE GUARD LIFTER IS RECONNECTED TO GUARD BEFORE USING MIXER, DO NOT OPERATE THE MIXER WITH DRUM GUARD OPEN OR REMOVED. WHEEL BEARING

LUBRICATION

Fill wheel hub with grease to inside diameter of outer races and also fill hub grease cap. Never use grease heavier than 265 A.S.T.M. penetration (No. 2 grade). Grease bearing cone by machine or by hand method. Force grease between rollers, cone and cage. (If Ball Bearing Hub: force grease between balls.) It is not recommended that a pressure grease fitting be installed on the hub.

HARDWARE

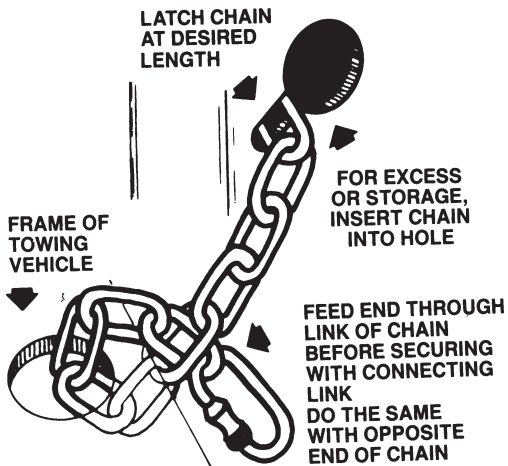
Periodically inspect all hardware on the mixer and engine / motor. Loose hardware can contribute to early component failure and poor performance.

NOTE: Some hardware is used to retain parts that have to move freely for correct operation of this unit. These items include the guard lifter and drum guard. The hardware for these items should be snug enough to prevent excessive play, yet loose enough to allow the parts to pivot freely.

MAINTENANCE

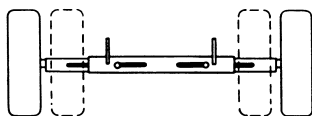
Towing/Bull Gear Assy

TOWING



Before attempting to tow this mixer, check the state and local laws that apply to your intended route and check the following:

1. Hitch attached to the towing vehicle securely.
2. Towpole fully extended and bolted to mixer securely.
3. Safety chain hooked up properly (see illustration below or decal on mixer front post).
4. Drum in the mixing position and drum latch engaged, clutch lever in the UP position.
5. Lug nuts and axle mount nuts tight.
6. On extendible axles, axle extended to full width and adjustment bolts tight.



7. On spring axles--spring mounting hardware tight, main springs and snubber springs not cracked or broken.

8. Tires in good shape and at proper inflation, for maximum safety and load capacity tires should be inflated to the following pressures.

Tire size 4.80 x 12 @ 60 P.S.I.

Tire size 6.50 x 13 @ 32 P.S.I.

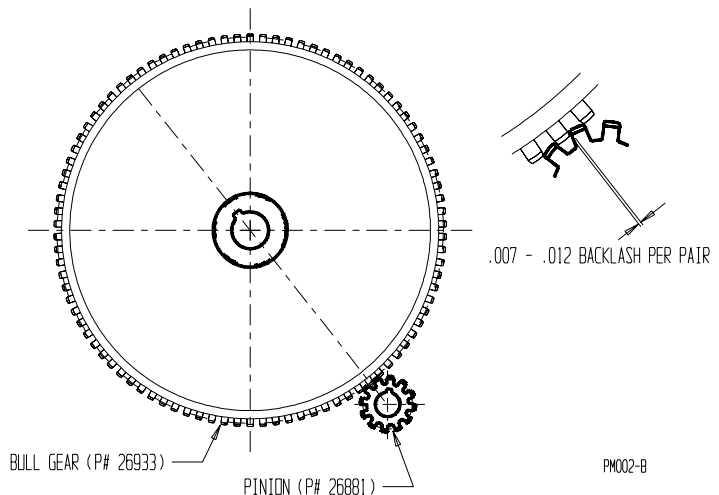
! WARNING

DO NOT EXCEED A TOWING SPEED OF 55 MILES/HR (90 KM/HR). FOR POOR ROAD CONDITIONS OR INCLEMENT WEATHER, REDUCE SPEED ACCORDINGLY.

Refer to FRAME AND DRUM ASSEMBLY, STANDARD AXLE ASSEMBLY and SPRING AXLE ASSEMBLY sections of this manual for parts identification and location.

BULL GEAR ASSEMBLY

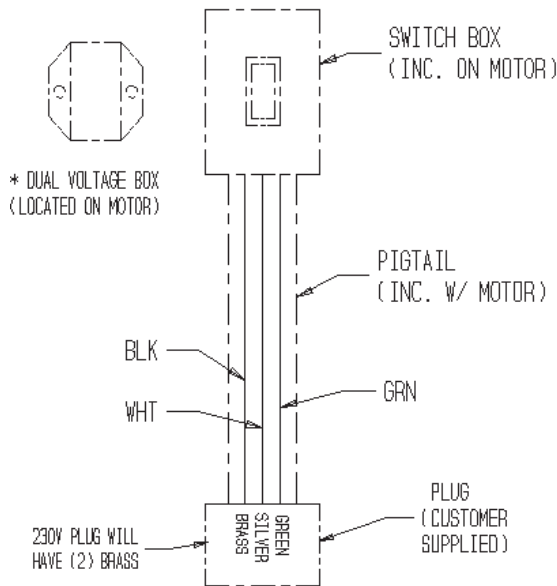
1. Align Bull Gear keyway opposite to gear mesh.
2. Adjust pinion for tooth alignment and engagement using .010" feeler gauge.
3. Tighten all four (4) pillow block bolts before removing feeler gauge.



MAINTENANCE

Electric Wiring

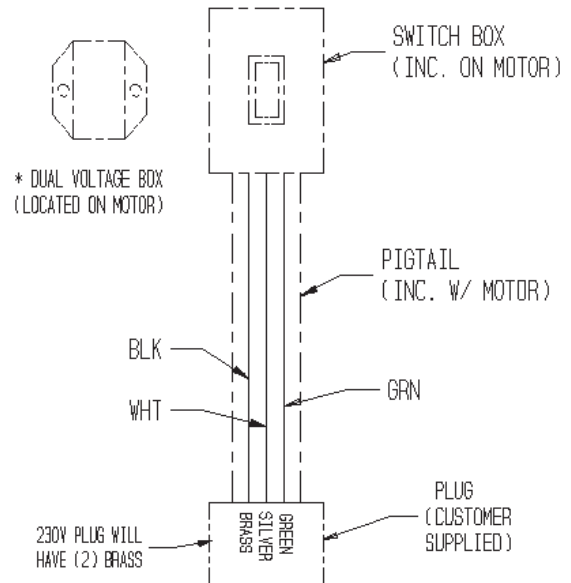
2 HP ELECTRIC WIRING / 1 PHASE
 STANDARD WIRING 115 VOLT 24 AMP.
 FOR 230 VOLT 12 AMP. ROTATE * DUAL
 VOLTAGE BOX 180 DEGREE, USE PROPER PLUG



USE 12/3 EXTENSION
 CORD OR BETTER FOR
 POWER SUPPLY

P/N 30168 MOTOR 2HP 115V/230V 1PH
 MOTOR MFG: BALDOR
 SPEC NO: 36F283-379

1-1/2 HP ELECTRIC WIRING / 1 PHASE
 STANDARD WIRING 115 VOLT 18 AMP.
 FOR 230 VOLT 9.5 AMP. ROTATE * DUAL
 VOLTAGE BOX 180 DEGREE, USE PROPER PLUG



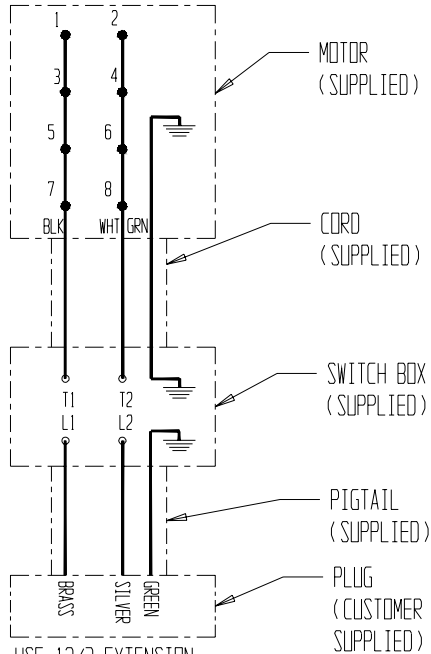
USE 12/3 EXTENSION
 CORD OR BETTER FOR
 POWER SUPPLY

P/N 30167 MOTOR 1-1/2 HP 115V/230V 1PH
 MOTOR MFG: BALDOR
 SPEC NO: 36F283-378

MAINTENANCE

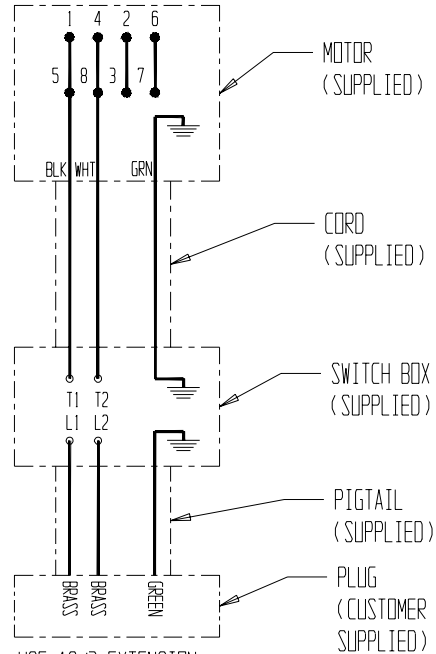
Electric Wiring

3HP ELECTRIC WIRING / 1 PHASE
115 VOLT 36 AMP.
(1 HEATER - P/N 48545)



USE 12/3 EXTENSION
 CORD OR BETTER FOR
 POWER SUPPLY

3HP ELECTRIC WIRING / 1 PHASE
208-230 VOLT 19 - 18 AMP.
(2 HEATERS P/N 48540)



USE 12/3 EXTENSION
 CORD OR BETTER FOR
 POWER SUPPLY

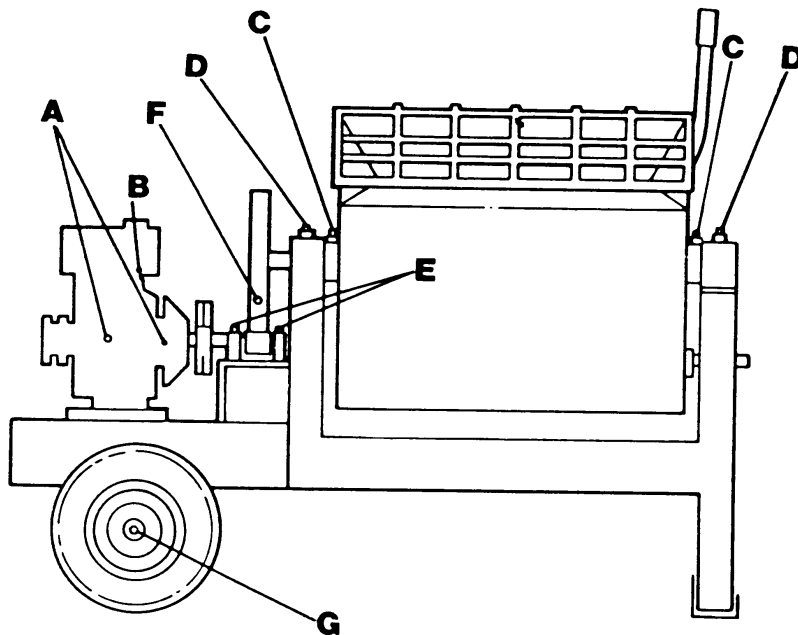
**ORIGINAL INSTALLATION OR FIELD REPLACEMENT
 OF THIS MOTOR OR PLUG REQUIRES THE SHAFT
 ROTATION TO BE COUNTERCLOCKWISE (CCW)
 FACING END OF SHAFT.**

P/N 30014 MOTOR 3HP 115V/230V 1PH
MOTOR MFG: BALDOR
CAT NO: L1505

PROCEDURE FOR CHECKING ROTATION

BEFORE PROCEEDING: STARTER SWITCH
 SHOULD BE IN THE "OFF" POSITION.

1. DISCONNECT SHEAVE AND BELTS FROM THE MOTOR/PUMP SHAFT.
2. TURN STARTER SWITCH "ON"
3. CHECK ROTATION, RELATIVE TO FACING END OF SHAFT (CW).
4. TURN STARTER SWITCH "OFF".
5. IF (CW) THEN REPEAT STEP 1 IN REVERSE ORDER
 IF THE SHAFT ROTATES CLOCKWISE (CCW), WIRE TAPS
 MUST BE CHANGED TO ACHIEVE (CW) ROTATION.
6. UNPLUG STARTER FROM POWER SUPPLY
8. OPEN THE FRONT COVER TO STARTER BOX
9. INTERCHANGE ANY TWO LINE LEADS TO REVERSE
 ROTATION.
10. CLOSE STARTER BOX AND REPEAT STEP 1 IN
 REVERSE ORDER.



NOTE: Cowl removed for clarity. Do not operate mixer with cowl removed.

A. ENGINE--Daily check the oil levels in the engine and engine reduction unit. The engine warranty is **VOID** if run without oil. Since there are many options available on this mixer, consult the **ENGINE MANUAL** for specific recommendation as to oil level, oil type required and frequency of oil changes required. For maximum service life from the engine, follow those recommendations.

B. ENGINE AIR FILTER--A supply of clean, unrestricted air is essential for long engine life and maximum performance. Check the air filter daily and clean or replace as necessary, again following the specific instructions found in the **ENGINE MANUAL**. **NEVER** run the engine without the air cleaner.

C. DRUM SEALS--Greasing the drum seals is particularly important, as the lifetime warranty on the seal is **VOID** if they are not greased properly.

D. TRUNNIONS--Grease the trunnion to allow easy turning of the drum.

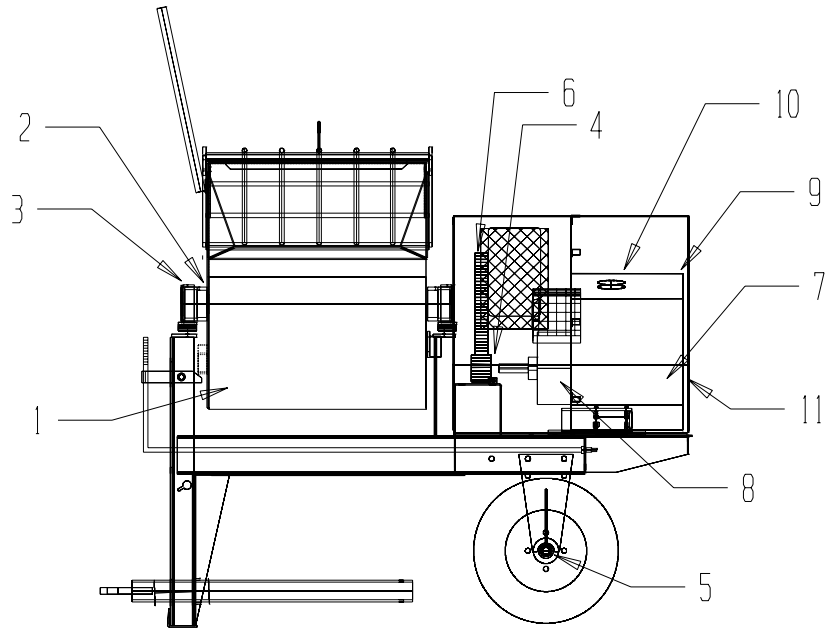
E. PILLOW BLOCK BEARINGS--Pillow block bearings need to be greased after each 40-50 hours of operation. Use any grade #1 lithium based grease.

F. BULL GEAR--Lightly grease the bull gear and pinion after each 250 hours of operation. Avoid over-greasing as this will attract dirt and accelerate wear.

G. WHEEL HUBS--Repack (4) tapered roller bearings in wheel hubs and replace wheel seals. Install washer and nut. Torque to 20 ft. lbs., back off one turn, torque to 7 ft. lbs., back off to first slot in nut and insert cotter key.

MAINTENANCE

Chart



MIXER MAINTENANCE REFER TO MIXER OWNER'S MANUAL PROVIDED PRIOR TO OPERATING OR SERVICING EQUIPMENT	EVERY 5 HOURS OR DAILY	25 HOURS OR EVERY WEEK	50 HOURS OR EVERY MONTH	100 HOURS OR EVERY YEAR
1. MIXER: CLEAN MIXER INSIDE & OUT/REMOVE ALL BUILD UP	CLEAN			
2. DRUM SEALS: GREASE FITTINGS W/ LITHIUM BASE GREASE		GREASE		
3. TRUNNIONS: GREASE FITTINGS W/ LITHIUM BASE GREASE		GREASE		
4. PILLOW BLOCK BEARINGS: W/ LITHIUM BASE GREASE		GREASE		
5. WHEEL HUBS: REPACK EVERY YEAR W/ WHEEL BRG GREASE				EVERY YEAR
6. BULL GEAR: LIGHTLY GREASE EVERY 250 HRS				
ENGINE MAINTENANCE				
REFER TO ENGINE OWNER'S MANUAL PROVIDED PRIOR TO OPERATING OR SERVICING EQUIPMENT				
7. OIL LEVEL: 40F-110F SAE 30W SE,SF,SG	CHECK		CHANGE *	
BELOW 40F SAE 10W-30 SE,SF,SG	CHECK		CHANGE *	
8. REDUCTION OIL: SAE 30W SE,SF,SG				CHANGE
9. AIR FILTER: PRE-CLEANER WASH IN SOAP & WATER/APPLY OIL		CLEAN **		REPLACE
ELEMENT CLEAN BY TAPPING		CLEAN **		REPLACE
10. SPARK PLUG: CLEAN OR REPLACE			CLEAN	REPLACE
11. COOLING SYS & AIR SCREEN				CLEAN

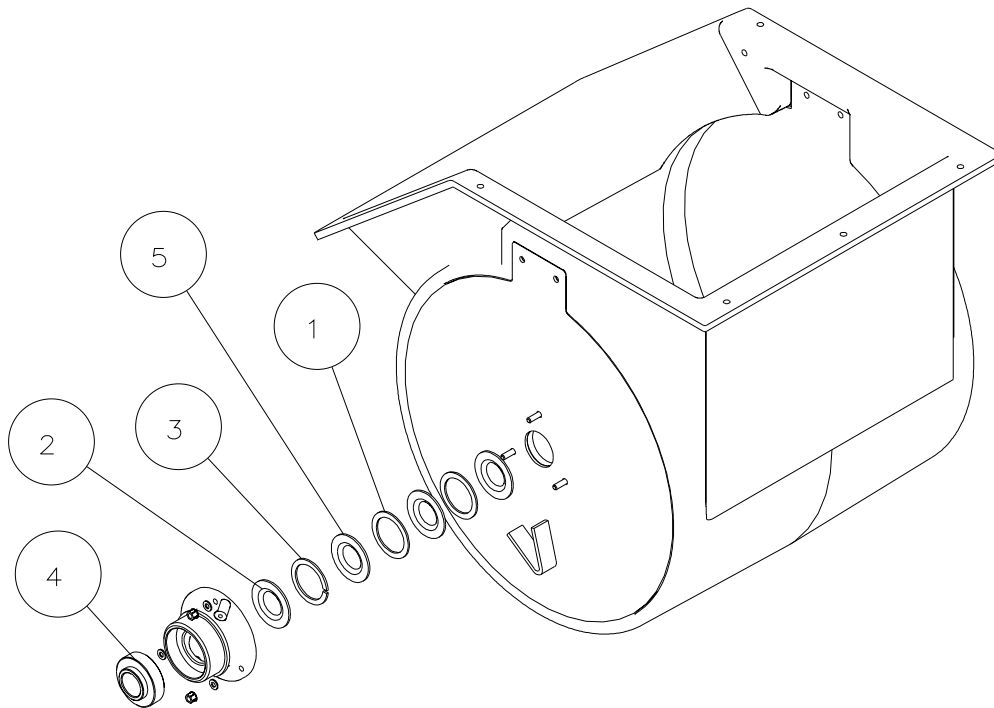
* CHANGE OIL AFTER FIRST 5 HOURS, THEN EVERY 50 HOURS
CHANGE OIL EVERY 25 HOURS UNDER HEAVY LOADS OR HIGH TEMPERATURES
** CLEAN/CHANGE AIR FILTER MORE OFTEN UNDER DUSTY CONDITIONS

SAFETY 1ST DISCONNECT SPARK PLUG OR ELECTRIC CORD BEFORE SERVICING
DANGER DO NOT REFUEL WHEN ENGINE IS HOT OR SMOKE WHEN REFUELING
AVOID PROLONGED BREATHING OF EXHAUST GASES 56376-A

MAINTENANCE

Bearing & Seal Installation Instructions

ITEM	PART NO.	DESCRIPTION	QTY
1	24017	WSHR 12GA, 2-15/16 OD x 2-1/4 ID	2
2	24022	DRUM SHAFT SEAL	1
3	25881	WASHER SPLIT	1
4	32003	BEARING	1
5	32324	SEAL DRUM YELLOW	3



1. Disassemble drum from frame and remove. Unscrew end bolts from paddle shaft and remove spacers and bull gear.
2. Attach a three-jaw puller to ring on housing, center puller on paddle shaft and remove housing and bearing.
3. Remove worn components and clean shaft and housing as needed.
4. Assemble seals and spacers over paddle shaft, flush with drum end using soapy water mixture as lubricant.
5. Make sure seals are assembled tight up to drum end; inner lip of seals curve inwards towards drum end as illustrated.
6. Insert bearing into housing and slide over shaft and seals as illustrated.
7. Tighten housing evenly to drum end so as not to pinch seals.
8. Reassemble spacer, bull gear (if applicable), washer and bolt to paddle shaft and repeat steps 4-7 on opposite end and reassemble drum to frame.

MAINTENANCE

Hardware Identification

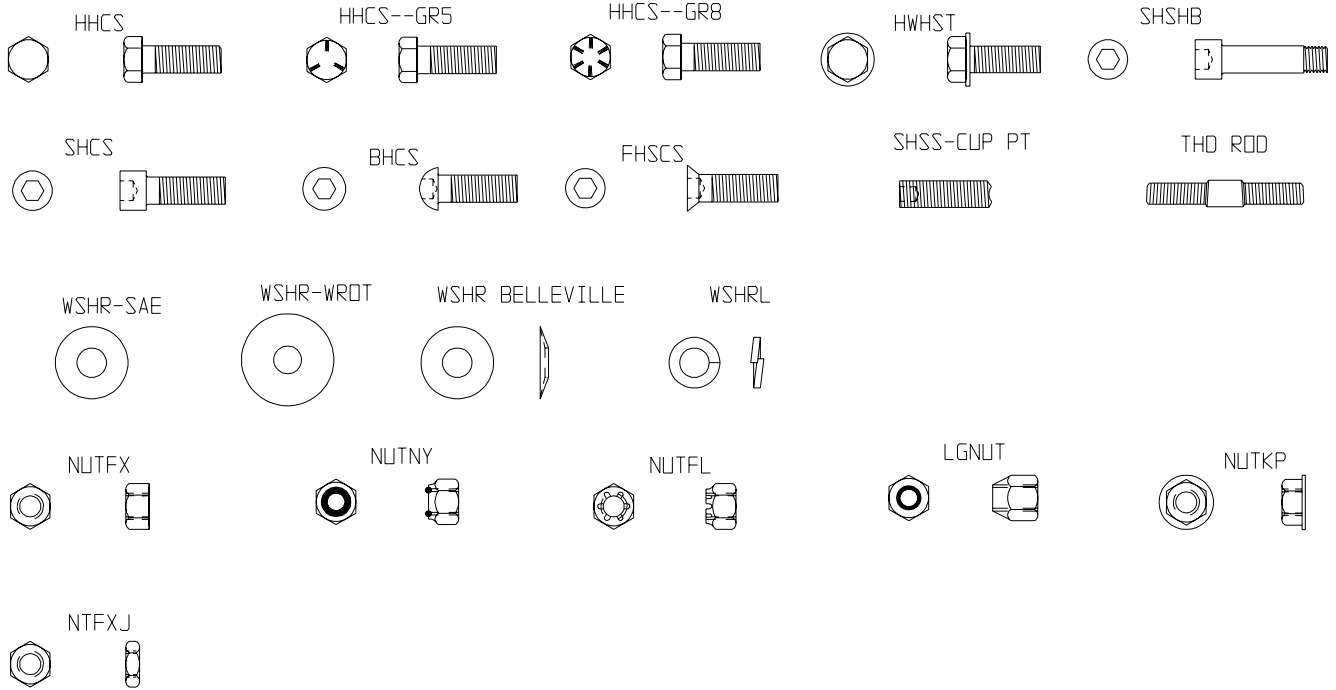


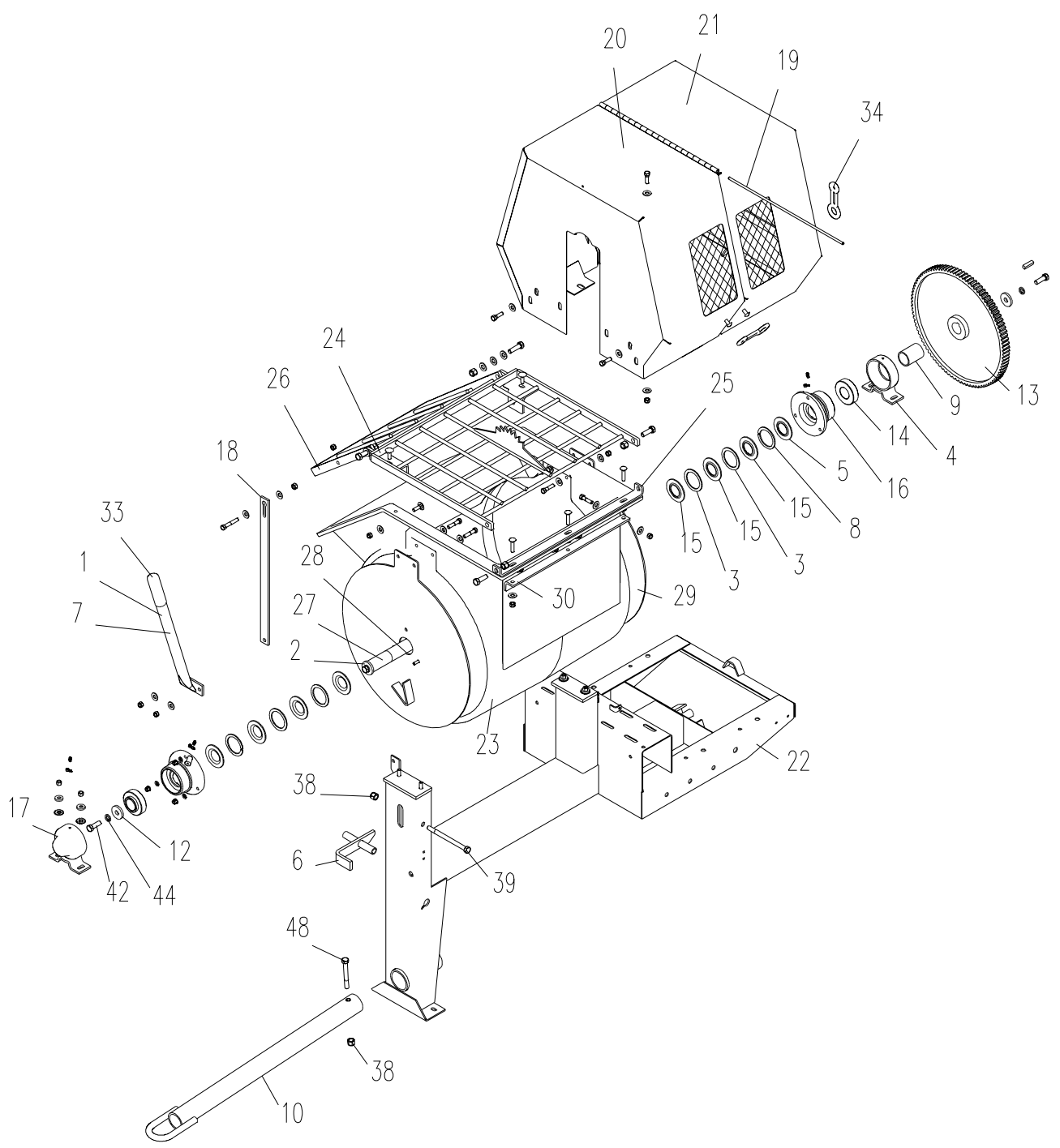
TABLE of CONTENTS

Exploded Views with Parts

Frame and Drum Assembly	26-29
Paddle Assembly/Blade and Paddle Sets	30-31
Clutch Lever Assembly	32-33
Electric Motor Drive Train	34-37
Gas Engine Drive Train	38-41
Optional Spring Axle Assembly	42-43
Standard Axle Assembly	44-45
Trailer Lights Assembly Option	46-47
Decal Identification	48-49

PARTS LIST

Frame and Drum Assembly



PARTS LIST

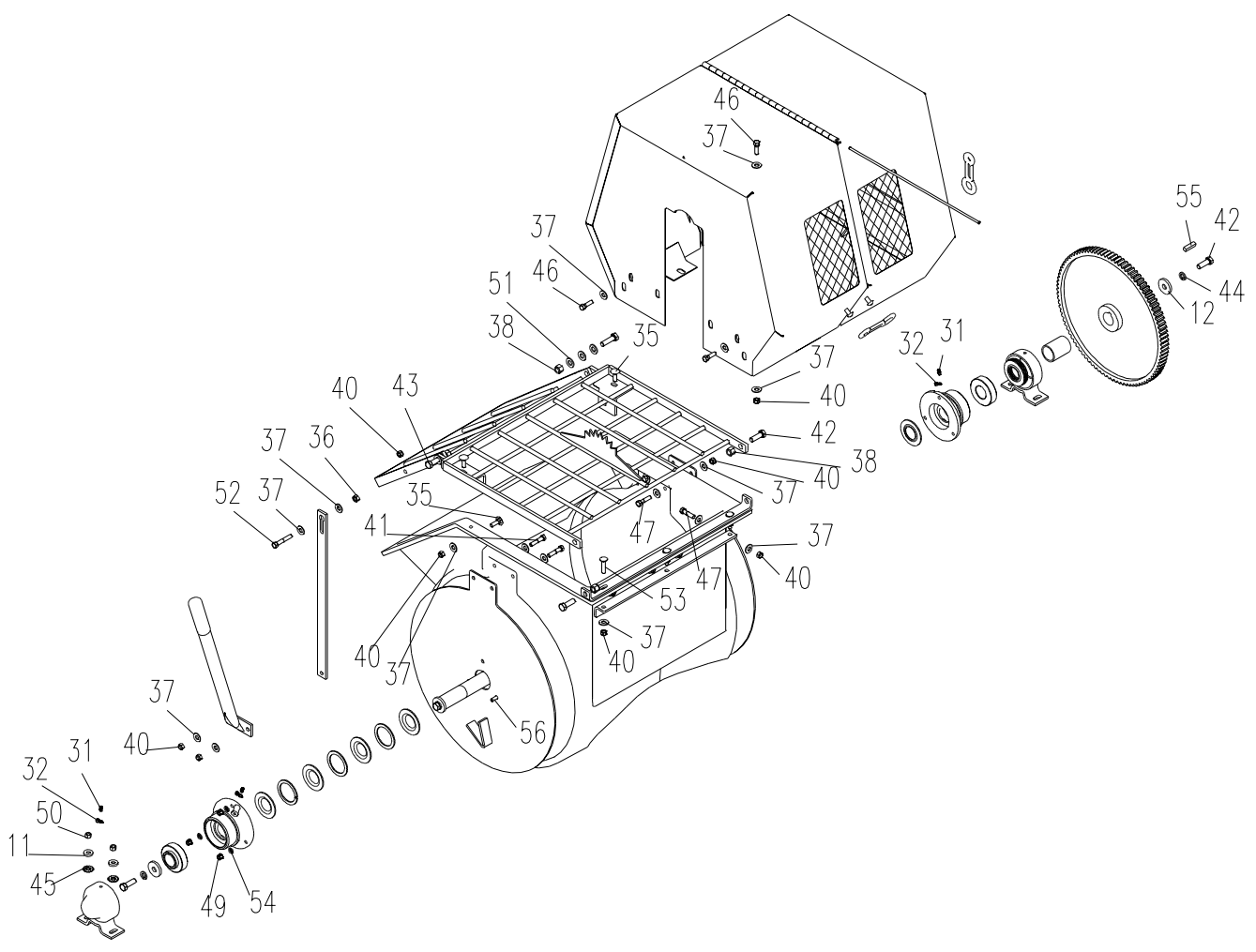
Frame and Drum Assembly

ITEM	PART NO.	DESCRIPTION	QTY.
1	23225	Asm Handle Dump	1
2	23548	Kit Shaft Paddle 655PMP	1
2a	23547	Kit Shaft Paddle 855PMP	1
3	24017	Wshr 12 Ga, 2-15/16 OD x 2-1/4 ID	4
4	24021-SLV	Weld Trunnion PM EE	1
5	24022	Drum Shaft Seal Black	2
6	24027-SLV	Latch Weld Drum	1
7	24406-SLV	Weld Handle Dump	2
8	25881	Washer Split	1
9	25928-SLV	Spacer Shaft EE	1
10	26096-2	Towpole	1
11	26325	Wshr .375 ID x 1.00 OD x .187 Zn	4
12	26326	Wshr 9/16 x 1-3/4 x 1/4	2
13	26933-SLV	Bullgear Weld	1
14	32003	Bearing	2
15	32324	Seal Drum Yellow	6
16	32326-SLV	Housing Bearing Machined	2
17	36574-SLV	Weld Trunnion Capped TPE	1
18	42670-SLV	Lifter Guard 21.50	1
19	44368	Pin Hinge	1
20	44382 -2	Weld Cowl Stry MdPM	1
21	44383-2	Cowl Weld Mvbl MdPM/CM	1
22	44386-SLV	Frame-Weld 655PMP	1
22a	44388-SLV	Frame-Weld 855PMP	1
23	45834	Drum Modify 655PMP	1
23a	45857	Drum Modify 855PMP	1
24	45835-2	Weld Guard Stry 655PMP	1
24a	42624-2	Weld Guard Stry 855PMP	1
25	45838-2	Bracket Mount Guard 655PMP	1
25a	42641-2	Bracket Mount Guard 855PMP	1
26	45840-2	Weld Guard Mvbl 655PMP	1
26a	44367-2	Weld Guard Mvbl 855PMP	1
27	45844-2	Shaft Drum 655PMP	1
27a	45854	Shaft Drum 855PMP	1
28	45845 -2	Weld End Drum TPE	1
29	45846-2	Weld End Drum EE	1

Note:

PARTS LIST

Frame and Drum Assembly



PARTS LIST

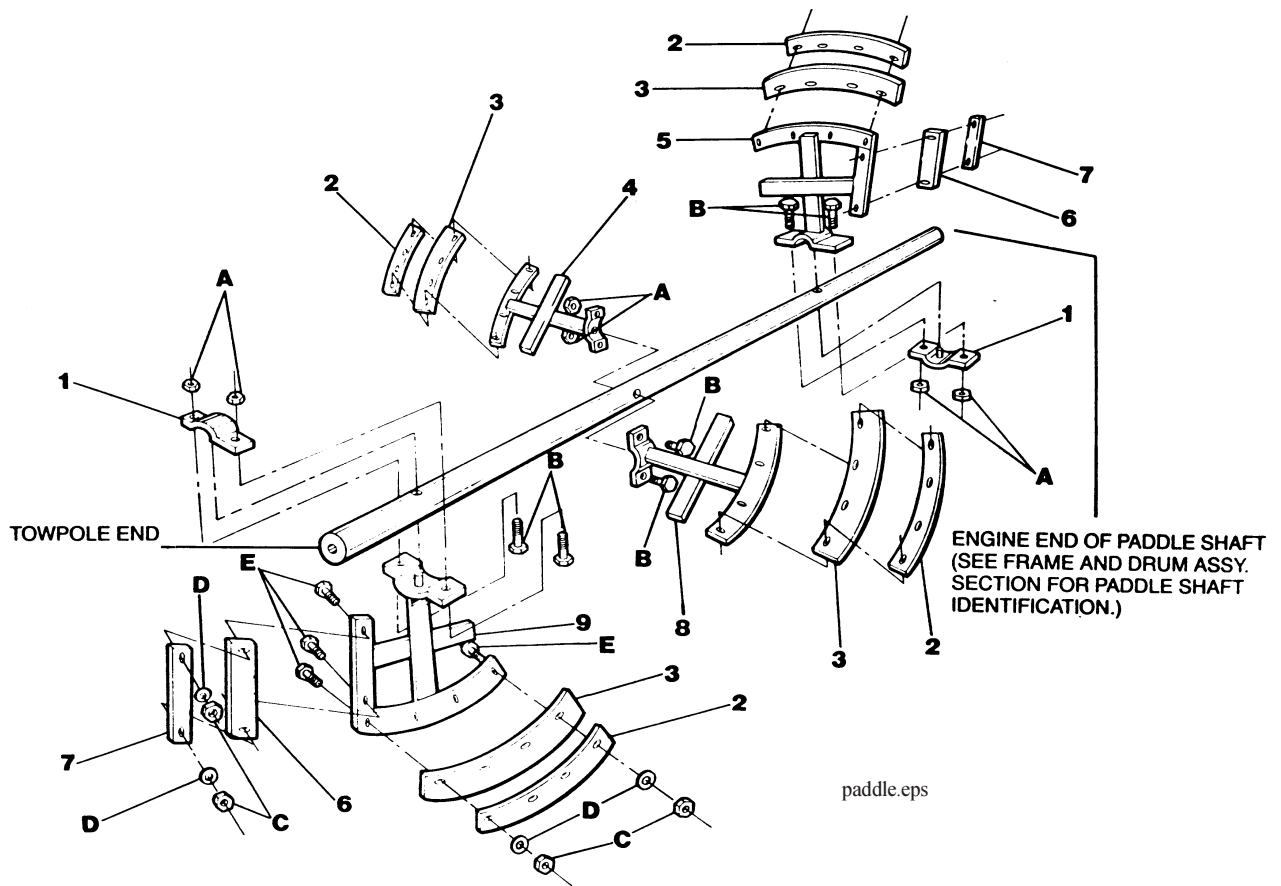
Frame and Drum Assembly

ITEM	PART NO.	DESCRIPTION	QTY.
30	45856-2	Bracket Support Guard 655PMP	1
30a	43115-2	Bracket Support Guard 855PMP	1
31	46042	Fitting Grease 1/4-28 Zn	4
32	47001	Cap Grease Fitting	4
33	47023	Grip Hand	1
34	47182	Latch Cowl	3
35	80041	CRBLT 3/8-16 X 1-1/4 ZN	4
36	80042	NUTFX 3/8-16 ZN	1
37	80043	WSHR WROT 3/8 ZN	33
38	80051	NUTNY 1/2-13 ZN	6
39	80052	HHCS 1/2-13 X 6-1/2 ZN	1
40	80056	NUTNY 3/8-16 ZN	20
41	80072	HHCS 3/8-16 X 1-3/4 GR 5 ZN	2
42*	80075	HHCS 1/2-13 X 1-1/2 GR5 ZN	4
43	80089	HHCS 1/2-13 X 1-3/4 GR5 ZN	2
44	80117	WSHRL 1/2 MED SPLIT ZN	2
45	80119	WSHRLT INT/EXT 3/8	4
46	80145	HHCS 3/8-16 X 1-1/4 GR5 ZN	4
47	80176	HHCS 3/8-16 x 1 1/2 GR2 ZN	6
48	80197	HHCS 1/2-13 X 4 ZN	1
49	80246	NUTKP 5/16-18 ZN	6
50	80326	NUTFL 3/8-16 1/2 HEIGHT	4
51	80343	WSHR SAE 1/2 ZN	6
52	80352	HHCS 3/8-16 X 2.25 GR5 ZN	1
53	80459	CRBLT 3/8-16 X 1-3/4 ZN	3
54	80495	WSHR SAE 5/16 ZN	6
55	81060	Key SQ 3/8 PLN	1
56	81165	CRBLT 5/16-18 X 1-3/4 ZN	6
^	23221	Kit Cowl Mvbl (Includes 19, 21 & 34)	1
^	23193	Kit Cowl Full (Includes 19, 20, 21 & 34)	1
^	23431	Kit Bearing Seal (Includes 3, 5, 8, 14 & 15)	1 (2 Sets)
^	23430	Kit Seal Specer (Includes 3, 5, 8 & 15)	1 (2 Sets)
^	21655	Kit Safety Chain	1

Note: * LOCTITE 262
^ NOT SHOWN

PARTS LIST

Paddle Assembly/Blade and Paddle Sets



PARTS LIST

Paddle Assembly/Blade and Paddle Sets

ITEM	PART NO.	DESCRIPTION	QTY.
1	24107-Blk	Clamp Paddle	2
2	24104-Blk	Backer Long	4
3	24106	Rubber Long	4
4	45852-2	Paddle EEC	1
5	45849-2	Paddle EE	1
6	47331	Rubber Short	2
7	42707-2	Backer Short	2
8	45853-2	Paddle TPEC	1
9	45848-2	Paddle TPE	1
A	80051	NUTNY 1/2 - 13 ZN	6
B	80089	HHCS 1/2 - 13 x 1-3/4 ZN	6
C	80042	NUTFX 3/8 - 16 ZN	20
D	80043	WSHR 3/8 WROT ZN	20
E	80041	CRBLT 3/8 - 16 x 1-1/4 ZN	20

BLADE AND PADDLE SETS

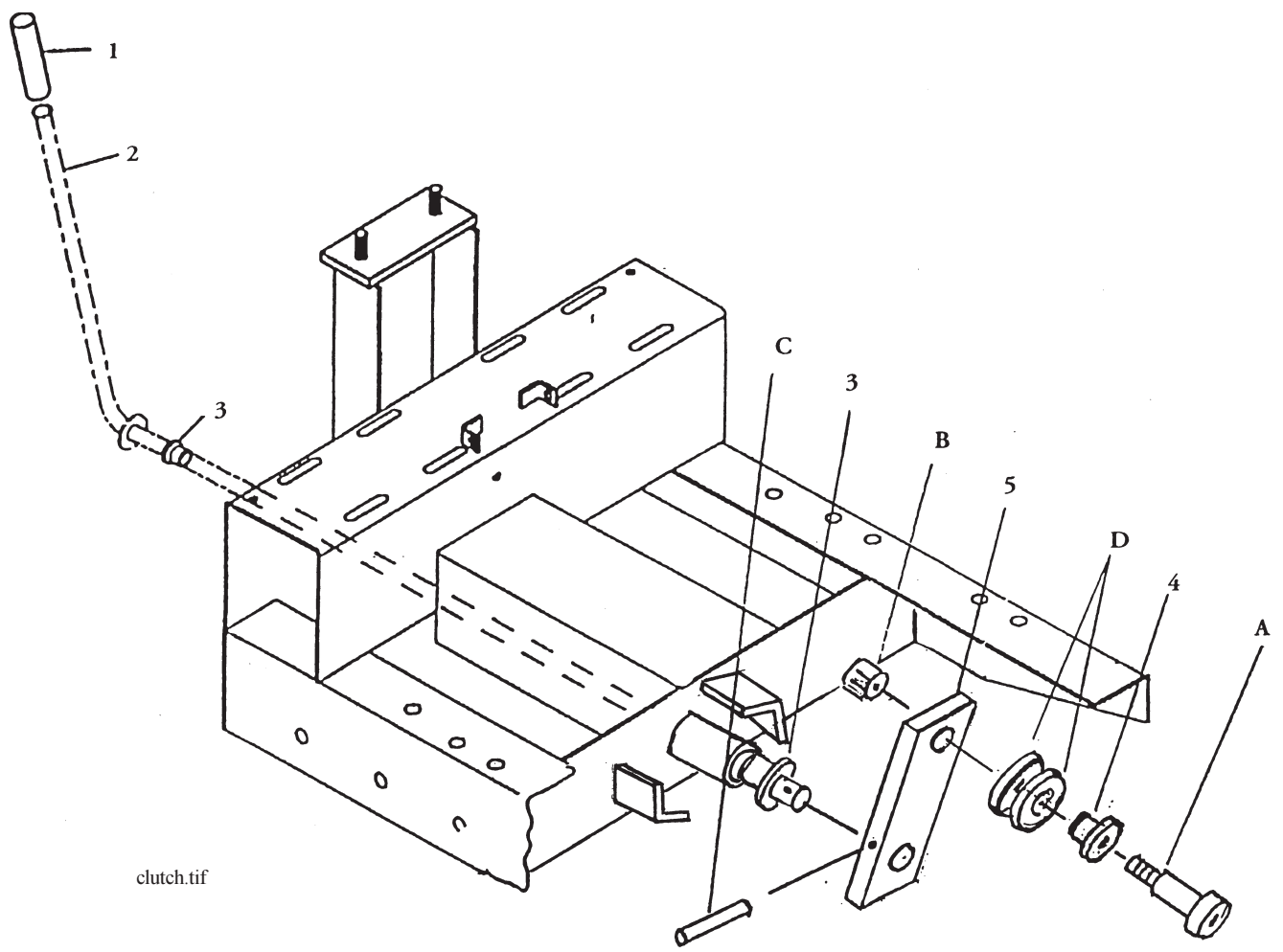
For convenience, the following Blade and Paddle Sets are available:

PART NO.	DESCRIPTION	QTY.
22841	Set Rub BLD (4) Part No. 24106 (2) Part N. 47331	1
22842	Set Back Bar (4) Part No. 24104-BLK (2) Part No. 42707-2	1
23544	Kit Paddles & Blades (1) Part No. 45848-2 (1) Part No. 45849-2 (1) Part No. 45852-2 (1) Part No. 45853-2 (2) Part No. 42707-2 (2) Part No. 47331 (4) Part No. 24104-BLK (4) Part No. 24106	1
23545	Kit Drum, Paddles & Blades 655PMP	1
23546	Kit Drum, Paddles & Blades 855PMP	1

Note:

PARTS LIST

Clutch Lever Assembly



clutch.tif

PARTS LIST

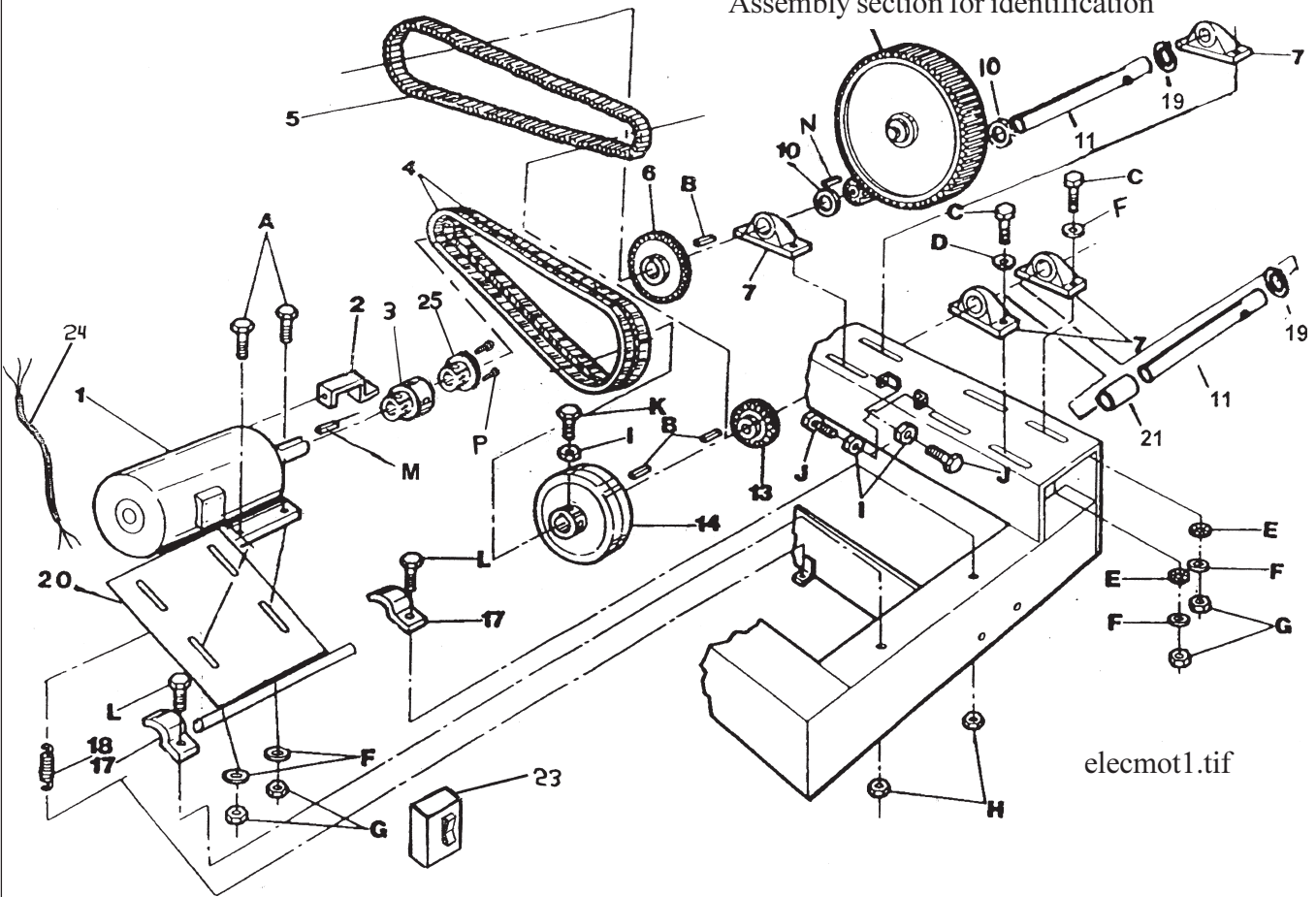
Clutch Lever Assembly

ITEM	PART NO.	DESCRIPTION	QTY.
1	34687	Grip Handle 0.62	1
2	39568-SLV	Lever Clutch Handle 655PMP	
2a	39570-SLV	Lever Clutch Handle 855PMP	1
3	32116	Bushing Flg Nylon 0.62	2
4	32099	Bushing Flg Nylon 0.50	1
5	39446-SLV	Link Clutch	1
A	80957	SHSHB 1/2 x 1 BLK	1
B	80056	NUTNY 3/8 - 16 ZN	1
C	80308	PINSP 1/4 x 1-1/2 ZN	1
D	26326	WSHR 1-3/4 x 9/16 x 1/4	2

PARTS LIST

Electric Motor Drive Train

BullGear--see Frame and Drum
 Assembly section for identification



elecmod1.tif

PARTS LIST

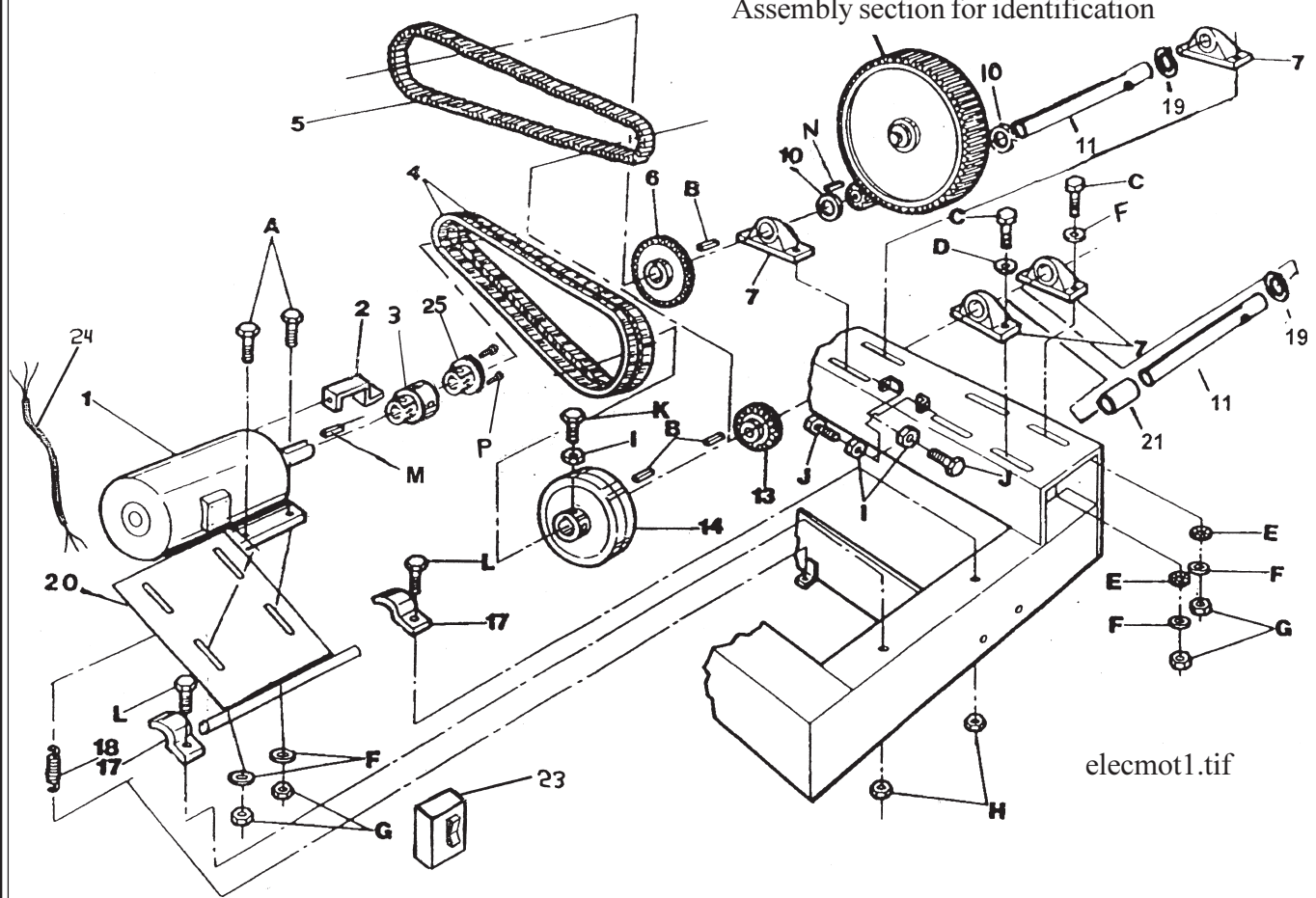
Electric Motor Drive Train

ITEM	PART NO.	DESCRIPTION	QTY.
1	30167	Motor Electric 1.5 hp	1
1a	30168	Motor Electric 2 hp	1
1b	30014	Motor Electric 3 hp	1
2	42446-2	Belt Guide	1
3	38666	Sheave, 2-1/2 x 7/8	1
4	34617	V-Belt A28	2
5	21184	Chain Assembly	1
5a	23525	Chain Assembly 3 hp electric	1
6	34127	Sprocket, 50B24 x 1	1
7	32208	Pillow Block	4
10	24622	Washer Pinion	1
11	22509	Shaft Assembly	2
13	34126	Sprocket 50B14 x 1	1
13a	35284	Sprocket 50B11 x 1 3 hp electric	1
14	38450	Sheave 8in	1
14a	34056	Sheave 2AK84 x 1 3 hp electric	1
17	27575-2	Bracket Motor Base	2
18	34849	Spring, Motor Base	1
19	38122	Washer Retainer Pin	1
20	39567-2	Motor Base	1
20a	37088-2	Motor Base 3 hp electric	1
21	29138	Spacer Pillow Block	1
22	28826	Threaded Rod	1
23	48535	Start Manual NEMA1 3hp 230V 1PH	1
24	48016	Pigtail 3 hp electric	1
25	35328	Bushing Taperlock 3 hp electric	1
26^	22850	Pinion Assembly Complete	1
27^	21300	Idler Assembly Complete	1
28^	48540	Heater Element FH48	2

PARTS LIST

Electric Motor Drive Train

BullGear--see Frame and Drum
Assembly section for identification



elecmod1.tif

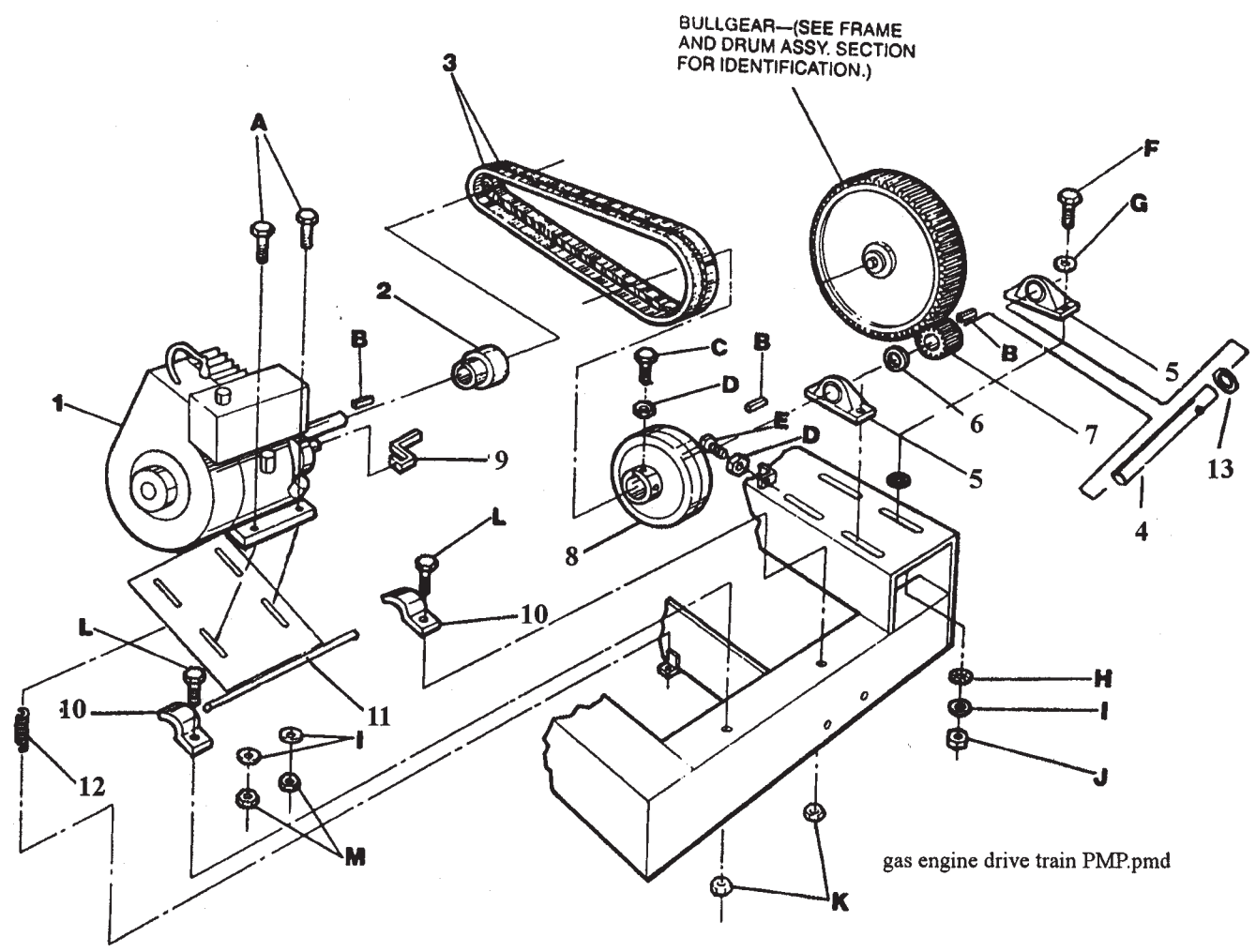
PARTS LIST

Electric Motor Drive Train

ITEM	PART NO.	DESCRIPTION	QTY.
A	80145	HHCS 3/8 - 16 x 1-1/4 ZN	4
B	80100	KEY 1/4 x 1	5
C	80072	HHCS 3/8 - 16 x 1-3/4 ZN	8
D	80342	WSHR 3/8 SAE ZN	8
E	80119	WSHRLT 3/8 INT/EXT ZN	8
F	26325	WSHR MTR BASE	10
G	80056	NUTNY 3/8 - 16 ZN	10
H	80051	NUTNY 1/2 - 13 ZN	2
I	80244	NTFXJ 5/16 - 8 ZN	3
J	80164	HHTB 5/16 - 18 x 1-1/2 ZN GR5	2
K	80258	SQHSS 5/16 - 18 x 3/4 ZN	1
L	80075	HHCS 1/2 - 13 x 1-1/2 Gr5 ZN	2
M	80060	3/16 SQ KEY	1
M1	80394	Key Square 1/4 x 1-1/4 Plain 3 hp Electric	1
N	80061	Key Square 1/4 x 1-1/2	2

PARTS LIST

Gas Engine Drive Train



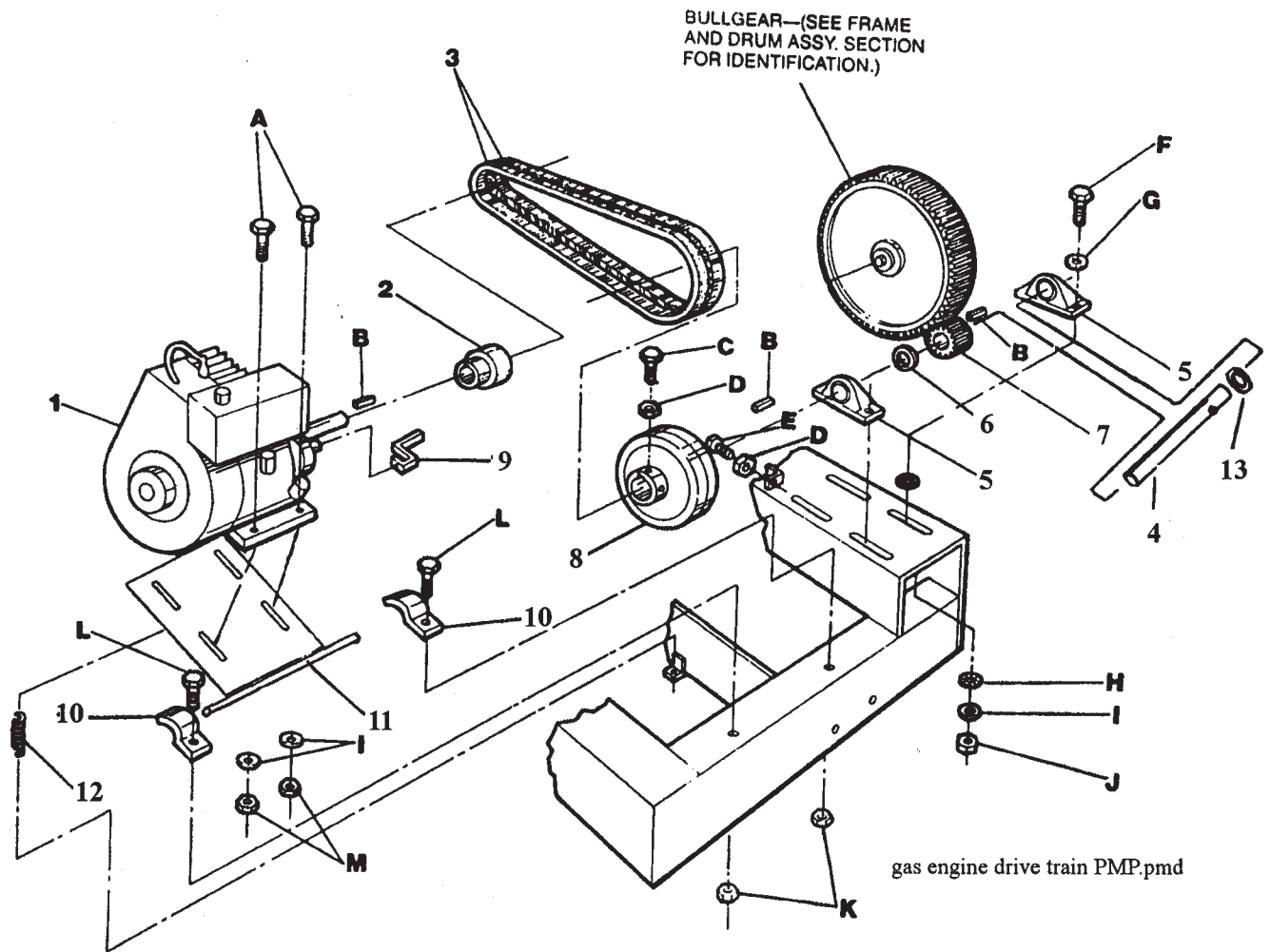
PARTS LIST

Gas Engine Drive Train

ITEM	PART NO.	DESCRIPTION	QTY.
1	30585	Engine 5hp B&S Intek 6:1	1
1a	31213	Engine 5.5hp Honda 6:1	1
1b	30596	Engine 6hp Robin 6:1	1
1c	30398	Engine 8hp B&S 6:1 Modified	1
1d	30155	Engine 8hp Honda 6:1	1
1e	30597	Engine 8.5hp Robin 6:1	1
1f	30399	Engine 8hp B&S I/P 6:1 Modified	1
1g	42999	Engine 10hp B&S I/P 6:1 Modified	1
2	38664	Sheave 4.25 x 3/4 (5 B&S, 5.5 Honda, 6 Robin)	1
2a	38449	Sheave 4.25 x 1 (8 Honda, 8 B&S, 8.5 Robin, 10 B&S)	1
3	34052	V-Belt A-32	2
4	22509	Shaft Assembly	1
5	32208	Pillow Block	2
6	24622	Washer Pinion	1
7	23121	Kit Pinion Gear	1
8	38450	Sheave 8 in	1
9	26199-2	Belt Guide (8.5 Robin assembled on opposite side-shown)	1
9a	42446-2	Belt Guide (8 B&S)	1
10	27575-2	Bracket Motor Base	2
11	39565-2	Motor Base (5 B&S, 5.5 Honda, 6 Robin)	1
11a	39557-2	Motor Base (8 B&S, 8 Honda, 8 B&S I/P)	1
11b	39443-2	Motor Base (8.5 Robin, 10 B&S I/P)	1
12	34849	Spring Motor Base	1
13	38122	Washer Retainer Pin	1

PARTS LIST

Gas Engine Drive Train



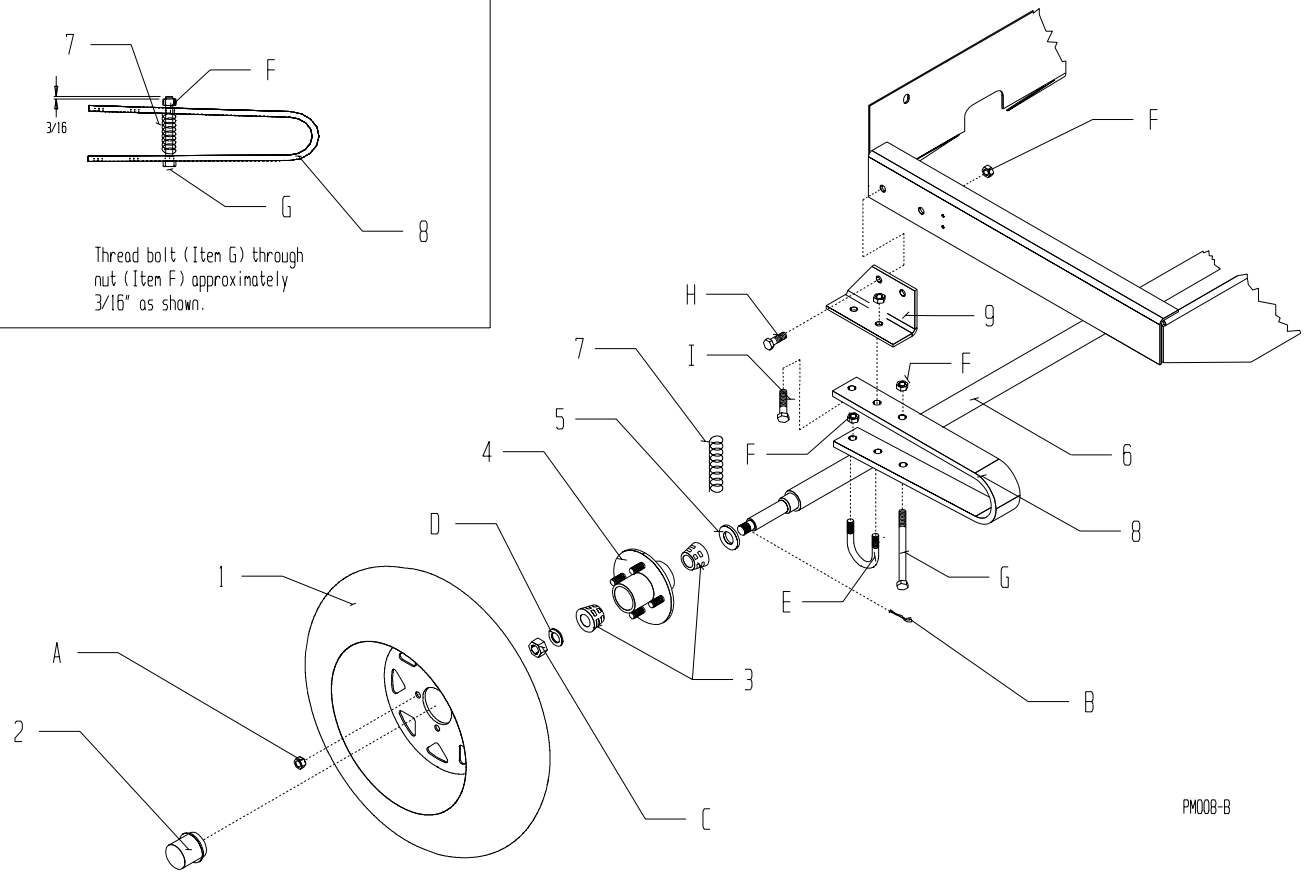
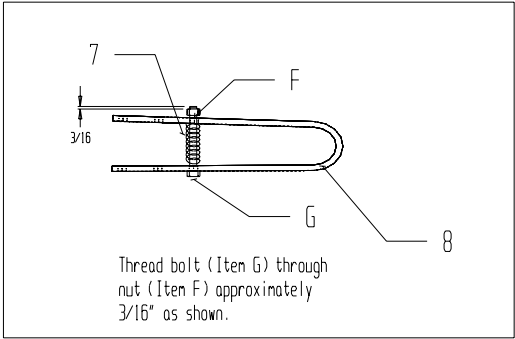
PARTS LIST

Gas Engine Drive Train

ITEM	PART NO.	DESCRIPTION	QTY.
A	80475	HHCS 5/16-18 x 1-3/4 (5 B&S, 5.5 Honda, 6 Robin)	4
A1	80178	HHCS 3/8 - 16 x 2 (8 Honda, 8.5 Robin)	4
A2	80169	HHCS 5/16-18 x 2 (8 B&S, 8 B&S I/P)	4
A3	80072	HHCS 3/8 - 16 x 1-3/4 (10 B&S I/P)	4
B	80100	KEY, 1/4 x 1	3
C	80258	SQHSS, 5/16 - 18 x 3/4	1
D	80244	NTFXS 5/16 - 18	2
E	80164	HHTB 5/16 - 18 x 1-1/2	1
F	80072	HHCS 3/8 - 16 x 1-3/4	4
G	80342	WSHR, 3/8 SAE	4
H	80119	WSHLT, 3/8 INT/EXT	4
I	26325	WSHR MTR BASE	6
J	80056	NUTNY 3/8 - 16	5
K	80051	NUTNY 1/2 - 13	2
L	80075	HHCS 1/2 - 13 x 1-1/2 Gr5 ZN	2

PARTS LIST

Optional Spring Axle Assembly



PM008-B

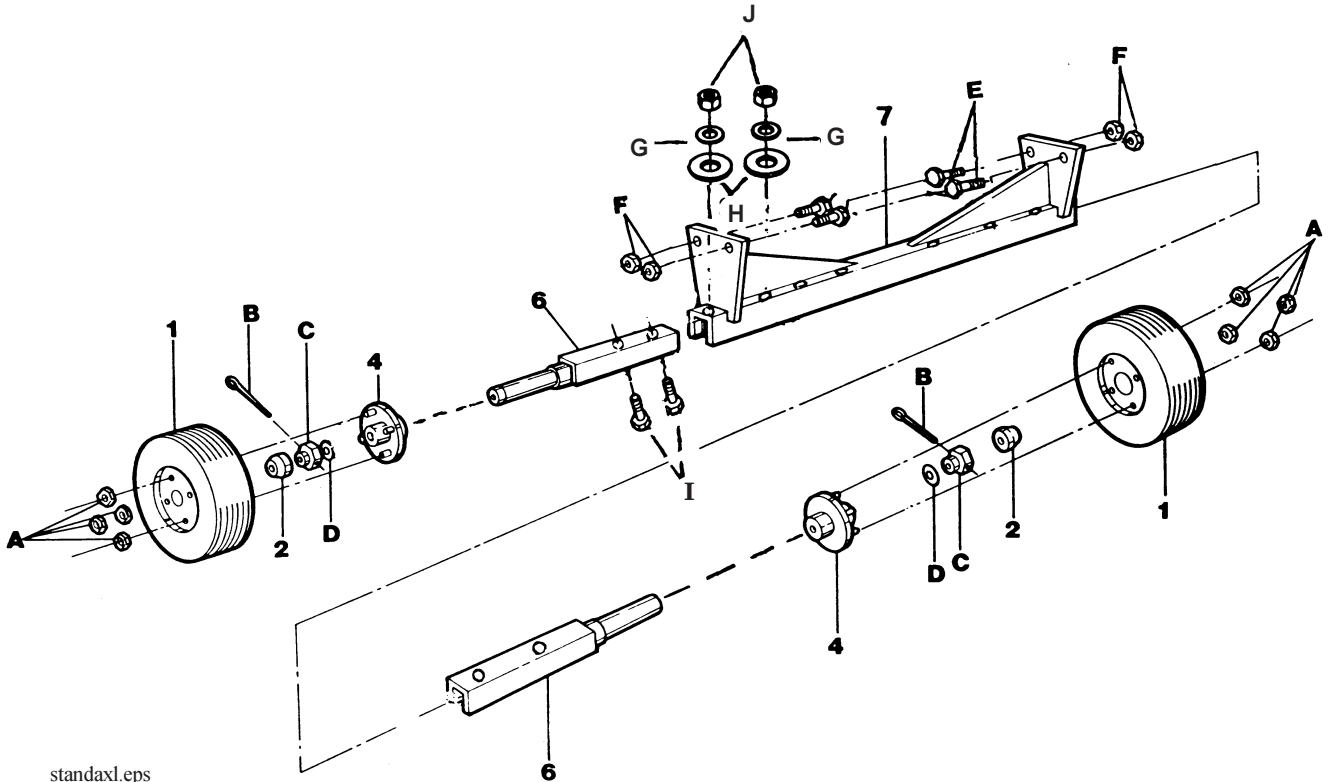
PARTS LIST

Optional Spring Axle Assembly

ITEM	PART NO.	DESCRIPTION	QTY.
1	32306	Tire and Rim 4.80 x 12 655PMP	2
1b	32307	Tire and Rim 6.50 x 13 855PMP	2
2	34573	Dust Cap	2
3	32051	Bearing Cone	4
4	34501	Hub (Includes 2, 3, 5)	2
5	32052	Seal Wheel Hub	2
6	21512-2	Axle Spring Option 655PMP	1
6b	21460-2	Axle Spring 56 inches 855PMP	1
7	34972	Coil Spring	2
8	26971-2	Spring	2
9	26949-2	Bracket Spring	2
10^	22162	Axle Assembly 655PMP (Includes 2, 3, 4, 5, 6, C, D)	1
10a^	22037	Axle Assembly 855PMP (Includes 2, 3, 4, 5, 6, C, D)	1
A	80045	LGNUT 1/2 - 20 ZN	8
B	80315	PINCT 3/16 x 2 ZN	2
C	80054	NUSFX 3/4 - 16 ZN	2
D	80344	WSHR 3/4 - 16 ZN	2
E	26195	U-BOLT	2
F	80051	NUTNY 1/2 - 13 ZN	14
G	80052	HHCS 1/2 - 13 x 6-1/2 ZN	2
H	80104	HHCS 1/2 - 13 x 1-1/4 ZN	4
I	80075	HHCS 1/2 - 13 x 1-1/2 ZN	4

PARTS LIST

Standard Axle Assembly



standaxl.eps

See **MAINTENANCE** section for proper wheel assembly and **TECHNICAL DATA** section for torque specs.

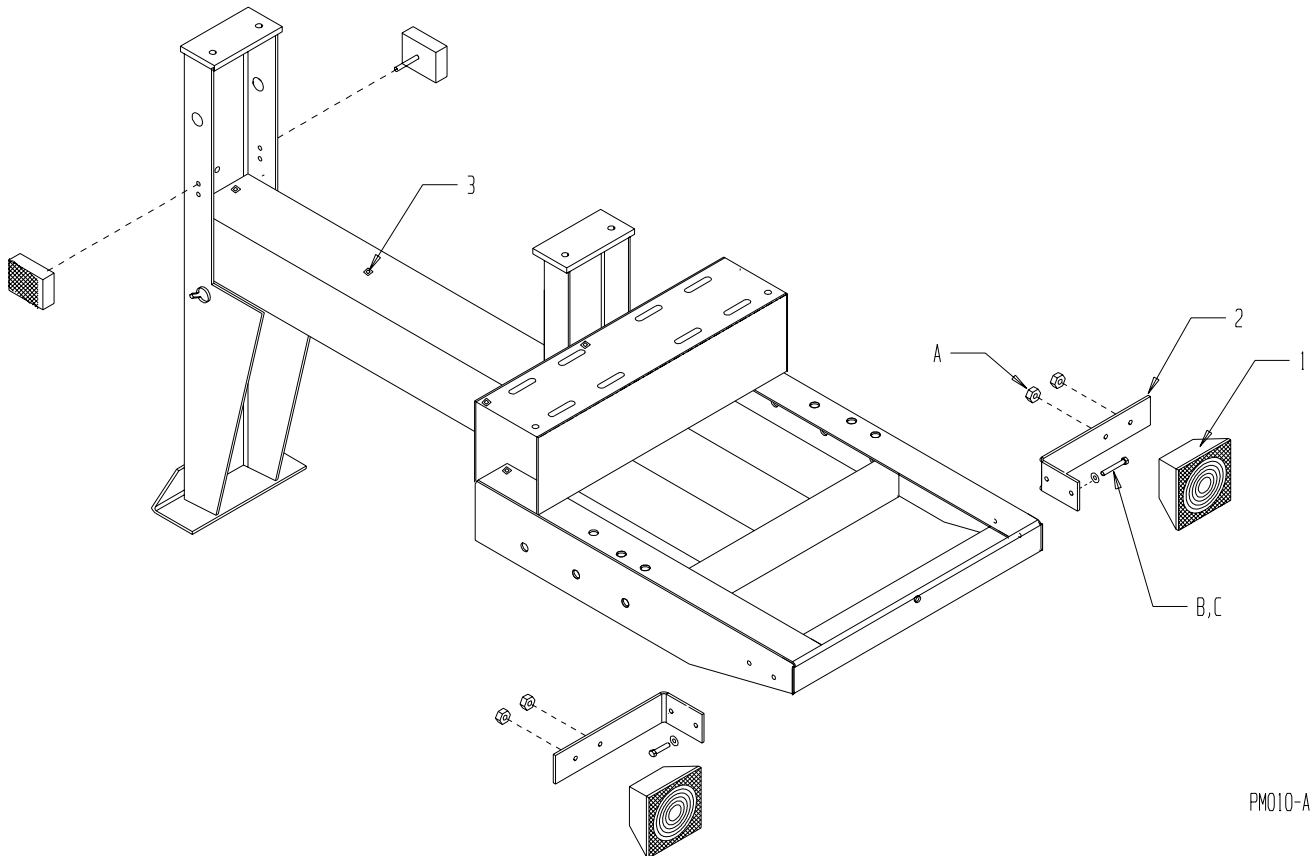
PARTS LIST

Standard Axle Assembly

ITEM	PART NO.	DESCRIPTION	QTY.
1	32306	Tire and Rim 4.80 x 12 655PMP	2
1a	32307	Tire and Rim 78 x 13 855 PMP	2
2	35473	Dust Cap	2
3^	32051	Bearing Cone	4
4	34501	Hub 4-Bolt W/Tapered Bearing (Includes 2, 3, 5)	2
5^	32052	Seal Wheel Hub	
6	22512-2	Half Axle, Weld	2
7	22511-2	Axle Support Weld	1
8	21497-2	Axle Assembly Complete	1
A	80045	LGNUT 1/2 - 20 ZN	8
B	80315	PINCT 1/8 x 1-1/2 ZN	2
C	80054	NUSFX 3/4 - 16 ZN	2
D	80344	WSHR 3/4 - 16 ZN	2
E	80104	HHCS 1/2 - 13 x 1-1/4 ZN	4
F	80051	NUTNY 1/2 - 13 ZN	4
G	80117	WSHR 1/2 MED SPLIT ZN	4
H	80343	WSHR 1/2 SAE ZN	4
I	80536	HHCS 1/2 - 20 x 1-3/4 ZN	4
J	80537	NUTFL 1/2 - 20 ZN	4

PARTS LIST

Trailer Lights Assembly



PARTS LIST

Trailer Lights Assembly

ITEM	PART NO.	DESCRIPTION	QTY.
1	36002	Trailer Lights	1
2	36003	Bracket Trailer Lights	2
3	48329	Tie Holder	10
4^	32087	Bushing Nylon 5/16 ID x 3/8 OD	1
5^	47303	Tie Tyton 4 inch Black	10
6^	48278	Term Fem .25 F-insul 14-16 gage	4
7^	48285	Term Male .25 F-insul 14-16 gage	4
8^	36001	Kit Trailer Lights (Includes 1,2,3,4,5,6,7,8,A,B,C)	1
A	80236	NUTKP 1/4 - 20 ZN	10
B	80347	WSHR 1/4 WROT ZN PL	4
C	80354	HHCS 1/4-20 x 1.00 ZN	4

PARTS LIST

Decal Identification

⚠ WARNING



Do not run machine with cover open.



⚠ WARNING

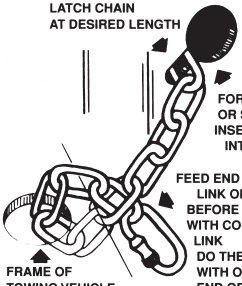
Shut off machine to service or clean.

55010

⚠ WARNING

Always stop engine when cleaning or adjusting machine. If electric motor pull plug.

SAFETY CHAIN
"PATENT #4180281"
CROSS CHAIN UNDER TOW POLE WITH 4" - 5" VERTICAL SLACK
LATCH CHAIN AT DESIRED LENGTH



FOR EXCESS OR STORAGE, INSERT CHAIN INTO HOLE

FEED END THROUGH LINK OF CHAIN BEFORE SECURING WITH CONNECTING LINK
DO THE SAME WITH OPPOSITE END OF CHAIN

FRAME OF TOWING VEHICLE

CAUTION
READ OPERATING INSTRUCTIONS BEFORE RUNNING MIXER 55121

⚠ CAUTION




FOR YOUR SAFETY

- Read owner's service manual before operating or servicing this machine.
- Always keep unauthorized, inexperienced, untrained people away from this machine.
- Rotating and moving parts will cause injury if contacted. Make sure guards and safety devices are in place before this machine is operated.
- Make sure engine is shut down and spark plug wire disconnected before servicing the machine or approaching the moving parts-if electric motor, disconnect plug.
- Never leave machine unattended when operating. Always stop engine or motor before adding fuel or oil.

NOTICE

Contact the manufacturer immediately at 1-800-888-9926 if safety or hazard decals or owner's manual are missing from this equipment.

CLEANING INSTRUCTION



1. Keep drum guard closed.
2. Always keep guard lifter connected.
3. Keep drum in upright, mixing position.
4. Spray mixer with water before mix dries to remove accumulation.
5. Rotate drum to dump position to remove debris.

⚠ WARNING: Failure to follow this instruction and/or rotation of drum without guard lifter connected can result in serious injury. 55496



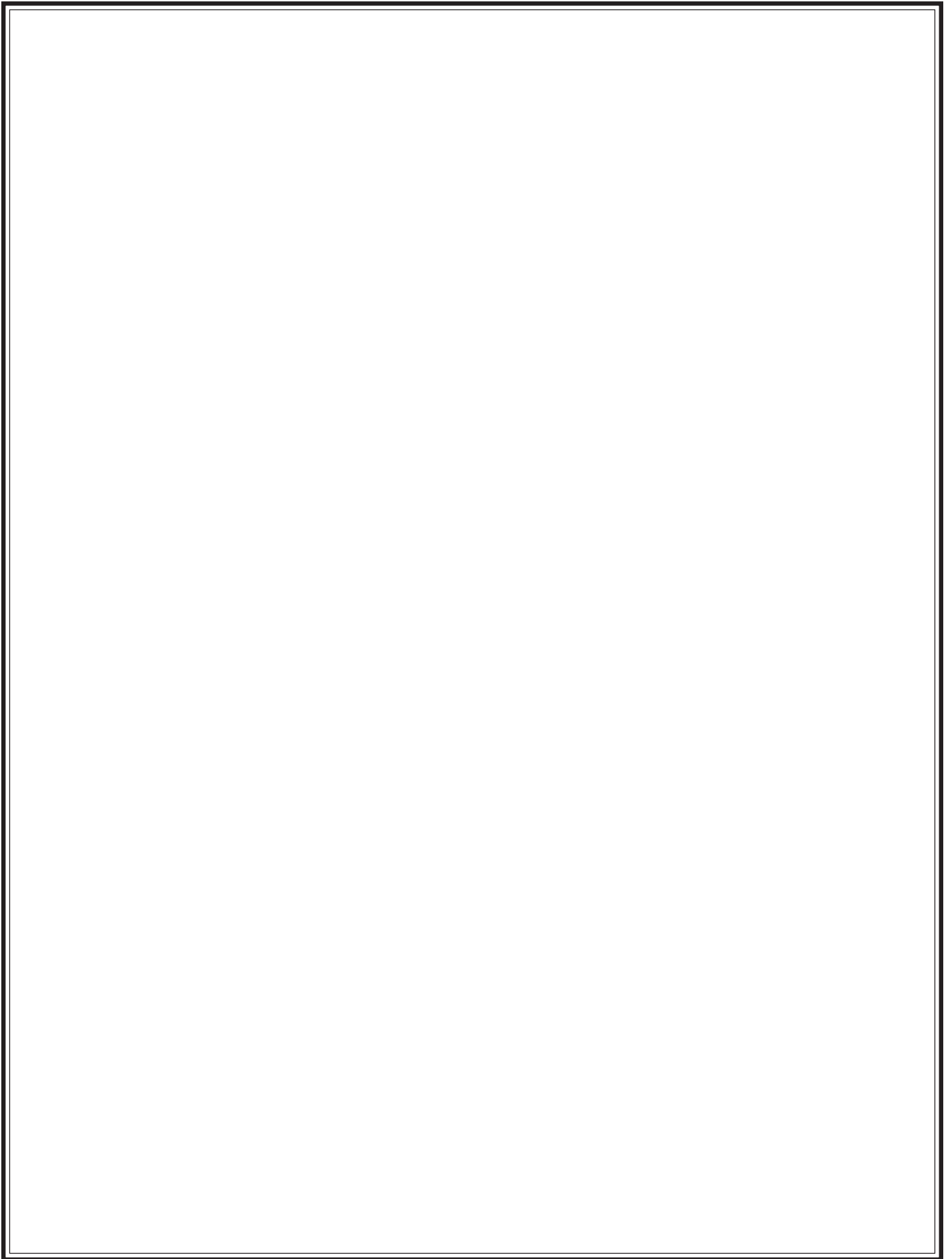
⚠ DANGER

GASOLINE
Stop engine and extinguish all flames and smoking materials before refueling. Use a safety can.

PARTS LIST

Decal Identification

ITEM	PART NO.	DESCRIPTION	QTY.
1^	55388	Kit Decals 655PM, 755PM, 855PM	1
	55010	Decal Warning Shut Off	1
	55011	Decal Warning Cover	1
	55127	Decal Warning Stop Engine	1
	55128	Decal Danger Gasoline	1
	55156	Decal Notice Missing Decals	1
	55046	Decal Safety Instructions	1
2^	55402	Kit Decals Standard Features, Grease, Safety	1
	55119	Decal Stone/Features 7x9	1
	55121	Decal Caution Safety Chain	1
	55007	Decal Grease Weekly Blue	1
3	55496	Decal Instruction Drum Clean	1
4^	55417	Decal Engine Idle	1
5^	55116	Decal Stone Eagle 8-1/2	1
6^	55260	Decal Stone Champions	1
7^	55269	Decal Fuel Shut Off	1



CALIFORNIA PROPOSITION 65 WARNING: Engine exhaust from this product contains chemicals known to the State of California to cause cancer, birth defects, or other reproductive harm.