



# TEREX

# TXC 225LC-1

## Hydraulic Excavator

<b>OPERATING WEIGHT</b>	47,400 lbs (21,500 kg)
<b>NET ENGINE POWER</b>	148 hp (110 kW) @ 1,950 rpm
<b>MAX DIG DEPTH</b>	21' 9" (6,630 mm)
<b>MAX REACH</b>	32' 6" (9,910 mm)



HYDRAULIC EXCAVATOR  
**TXC 225LC-1**

### FEATURES

- Powerful, quiet, fuel efficient, turbocharged USA EPA Tier 2 compliant diesel engine maximizes power output and utilization
- e-EPOS System uses variable displacement piston pumps ensuring high efficiency and lower fuel consumption
- Swing anti-rebound valve assures quick, precise, and smooth directional stops during dumping or cradling
- Exceptional bucket break-out and radial tooth forces for toughest digging
- Spacious, comfortable cab provides excellent visibility and ergonomic operating environment
- Advanced graphic display LCD information monitor panel makes troubleshooting easier, simplifies machine performance record keeping
- Standard equipped 3-switch joystick control and hydraulic piping to boom base facilitate installation of most attachments
- Equipped to maximize operator comfort, efficiency and performance
- More standard features to make this TEREX hydraulic excavator the most productive ever

## Specifications

Engine	
Model	DAEWOO DE58TIS
Type	Water-cooled, 4-cycle, direct injection, aspiration, turbocharged, air-to-air intercooled. USA EPA Tier 2 compliant.
No. of cylinders	6
Rated flywheel horsepower	
DIN 6271, net	150 PS (110 kW) @ 1,950 rpm
SAE J1349, net	148 HP (110 kW) @ 1,950 rpm
Piston displacement	353 cu. in. (5,785 cc)
Maximum torque	445 lbf.ft. (603 Nm) @ 1,400 rpm
Bore and stroke	4" x 4.6" (102 mm x 118 mm)
Starting system	24V electric motor
Batteries	2 x 12V x 150 AH

Hydraulic System	
e-EPOS (Electronic Power Optimizing System) allows the operator to maximize work efficiency over a full range of operating conditions and to minimize fuel consumption.	
Hydraulic system assures fully independent and combined operations.	
Automatic 2 speed travel system for high traction force and travel speed.	
Cross-sensing and fuel saving pump system.	
Auto idle system.	
2-Working /2-power mode selection system.	
Computer aided engine-pump control.	
<b>Main pumps</b>	2 variable displacement axial piston pumps.
Max. oil flow	2 x 56.8 gpm (2 x 215 L/min)
<b>Pilot pump</b>	Gear pump
Max. oil flow	7.9 gpm (30 L/min)
<b>Swing motor</b>	
Relief valve	4,050 psi (279 bar)
<b>Main relief valves</b>	
Boom/Stick/Bucket Normal:	4,690 psi (324 bar)
Power Boost:	4,975 psi (344 bar)
Travel circuit:	4,690 psi (324 bar)

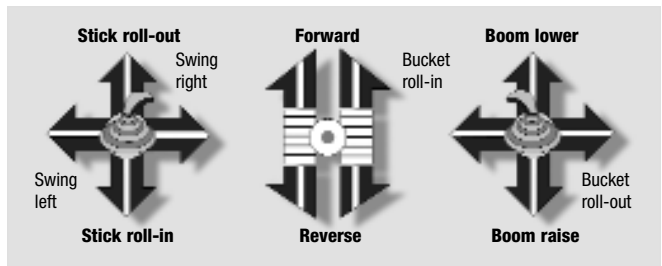
Hydraulic Cylinders			
High-strength piston rods and tubes are used. Cylinder cushion mechanism is provided for all cylinders to minimize shock during operation and extend cylinder component life.			
<b>Cylinders</b>	<b>Qty</b>	<b>Bore x Rod dia x Stroke</b>	
Boom	2	4.7" x 3.3" x 49.0" (120 x 85 x 1,245 mm)	
Stick	1	5.3" x 3.7" x 60.6" (135 x 95 x 1,538 mm)	
Bucket	1	4.7" x 3.1" x 41.3" (120 x 80 x 1,050 mm)	

Superstructure Revolving Frame	
Deep full-reinforced box section constructed of heavy gauge steel plates.	

Operator's Cab	
Cab is independent and roomy. 4 side safety glass windows give excellent visibility. Front window slides up and stores in the roof and side window can be opened for ventilation. Fully adjustable suspension seat. Air conditioner. ISO standard cab.	

Noise Levels (dynamic value)	
<b>LwA External noise</b>	
<b>Guaranteed Sound Power Level</b>	<b>104 dB(A)</b> (2,000/14/EC)
<b>Measured Sound Power Level</b>	<b>103.1 dB(A)</b> (2,000/14/EC)
<b>LpA Operator Noise</b>	<b>74 dB(A)</b> (ISO 6396)

Controls - 2 Implement Levers	
Pilot pressure control type. Right lever is boom and bucket control, left lever for swing and stick control.	



2 Travel Pedal with Levers	
Pilot pressure control type. Independent drive at each track allows counter-rotation of the tracks. Levers are detachable.	

Swing Mechanism	
High-torque, axial piston motor with planetary reduction gear in oil bath. Swing assembly is single row, shear type ball bearing with induction-hardened internal gear. Internal gear and pinion gear immersed in lubricant. Swing parking brake is spring-set, hydraulic-released disc type. A two position swing lock secures the superstructure for transportation.	
Swing speed	0 to 12.3 rpm
Rear swing radius	9' (2,750 mm)

Drive	
Each track is driven by an independent, high-torque, axial piston motor through planetary reduction gearing. Two levers or foot pedal control provide smooth travel or counter-rotation upon demand.	
Travel speed (High/Low)	3.4/1.9 mph (5.5/3.1 km/h)
Maximum traction force	45,860 lbf (204 kN)
Gradeability	35° (70%) continuous

Brakes	
Two oil disc brakes outboard mounted on final drive input shafts. Parking brake is spring-set, hydraulic-released disc type.	

## Specifications

### Undercarriage

Tractor type undercarriage. Heavy-duty track frame, all welded stress-relieved structure. The highest grade materials are used for toughness. Side frames are welded, securely and rigidly, to the track frame. Lifetime-lubricated track rollers, idlers and sprockets with floating seals reduce field service requirements. Track shoes of induction-hardened rolled alloy with triple grousers ensure long life under the harshest applications. Specially heat-treated connecting pins reduce wear. Hydraulic track adjusters with shock-absorbing recoil springs are standard.

#### Number of rollers and shoes (each side) ground contact area

Upper rollers 2

#### (Standard Shoe)

Lower rollers 9

Track shoes 49

Overall track length 14' 7" (4,440 mm)

### Weight

Equipped with 18' 8" (5.7 m) boom, 9' 6" (2.9 m) stick, and 1.22 yd<sup>3</sup>; PCSA heaped (0.93 m<sup>3</sup>) bucket.

Shoe type	Shoe width	Operating weight	Ground pressure
Triple grouser	24" (600 mm)	47,400 lb. (21,500 kg)	6.4 psi (44 kpa)
Triple grouser	32" (800 mm)	48,750 lb. (22,160 kg)	5.0 psi (34 kpa)
Triple grouser	36" (900 mm)	49,515 lb. (22,460 kg)	4.4 psi (30 kpa)

### Service Refill Capacities

	U.S. gal	Liters
Fuel tank	92.5	350
Cooling system	11.1	42

Lubrication	U.S. gal	Liters
Engine oil	4.8	19.0
Swing drive (each)	1.3	5.0
Final drive (each)	1.44	5.4
Hydraulic system	58.1	220
Hydraulic tank	31.7	120

### Buckets

Capacity PCSA heaped	Width without side cutters	Width with side cutters	Weight	Stick Recommendation		
				9' 6" (2.9 m)	7' 9" (2.4 m)	11' 6" (3.5 m)
0.65 yd <sup>3</sup> (0.5 m <sup>3</sup> )	27" (688 mm)	31" (778 mm)	1,100 lb. (500 kg)	A	A	A
1.06 yd <sup>3</sup> (0.81 m <sup>3</sup> )	42" (1,058 mm)	46" (1,168 mm)	1,520 lb. (690 kg)	A	A	A
1.22 yd <sup>3</sup> (0.93 m <sup>3</sup> )	46" (1,180 mm)	51" (1,290 mm)	1,610 lb. (730 kg)	A	A	B
1.37 yd <sup>3</sup> (1.05 m <sup>3</sup> )	51" (1,302 mm)	56" (1,412 mm)	1,740 lb. (790 kg)	B	A	C
1.53 yd <sup>3</sup> (1.17 m <sup>3</sup> )	56" (1,428 mm)	61" (1,538 mm)	1,830 lb. (830 kg)	C	B	C

A. Suitable for materials with density of 3,370 lb./cu.yd. (2,000 kg/m<sup>3</sup>) or less

B. Suitable for materials with density of 2,700 lb./cu.yd. (1,600 kg/m<sup>3</sup>) or less

C. Suitable for materials with density of 1,850 lb./cu.yd. (1,100 kg/m<sup>3</sup>) or less

## Standard Equipment

### Hydraulic System

Boom and stick flow regeneration • Boom and stick holding valves • Swing anti-rebound valves • Spare ports (valve) • One-touch power boost

### Cab and Interior

- All weather sound suppressed cab with suspension type mounts
- Air conditioner (heavy duty) and heater/ defroster • Adjustable suspension seat with head rest and adjustable arm rest • Pull-up type front window and removable lower front window with storage brackets in cab • Roof hatch/cover • Cab light • Intermittent windshield wiper
- Cigar lighter and ashtray • Cup holder • Hot and cold storage container
- Graphic LCD display monitor • Fuel consumption controller • AM/FM Radio and cassette player • Remote radio ON/OFF switch • 12V spare power socket • Serial communication port for laptop PC interface
- Joystick levers with 3 switches

### Other

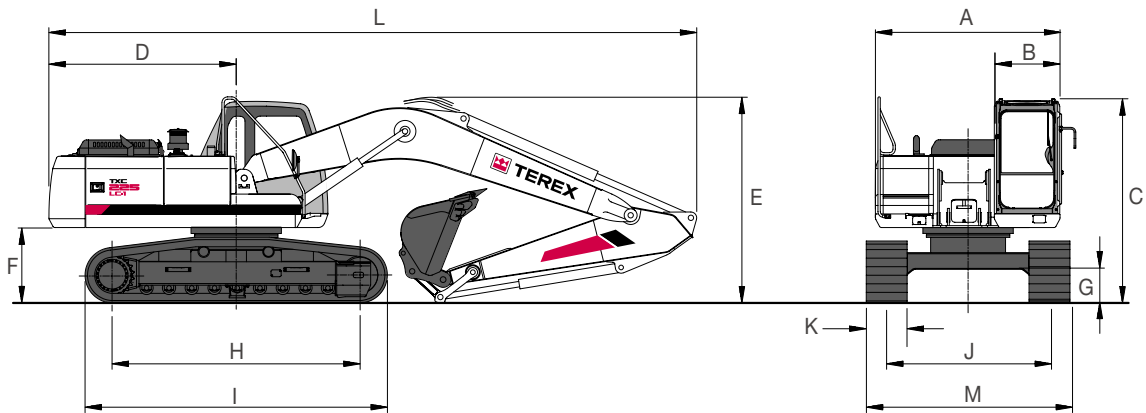
Large handrails and steps • Punched grid-type metal anti-slip upperstructure plates • Seat belt • Sun roof (hatch) • Hydraulic safety

lock lever • Safety glass • Manual hammer mounted in cab for emergency use • Right and left rearview mirrors • Travel alarm • Heavy-duty fan guard • Dual element air cleaner • Pre-cleaner • Water separator • Double fuel filter • Radiator dust screen • Engine overheat prevention system • Engine restart prevention system • Self-diagnostic system • Heavy-duty alternator (24V, 80 amps) • Electric horn • Halogen working lights (frame mounted 2, boom mounted 2) • Hydraulic track adjuster • Sealed and greased track links • Track guards

## Optional Equipment

Sun visor • Cab top/front guard (ISO 10262, FOGS standard) • Rotating beacon • Piping for hammer (one way) • Piping for optional implement rotation • Additional work lights on the cab (2 front lamps, 4 front and 2 rear lamps) • Electric fuel supply pump

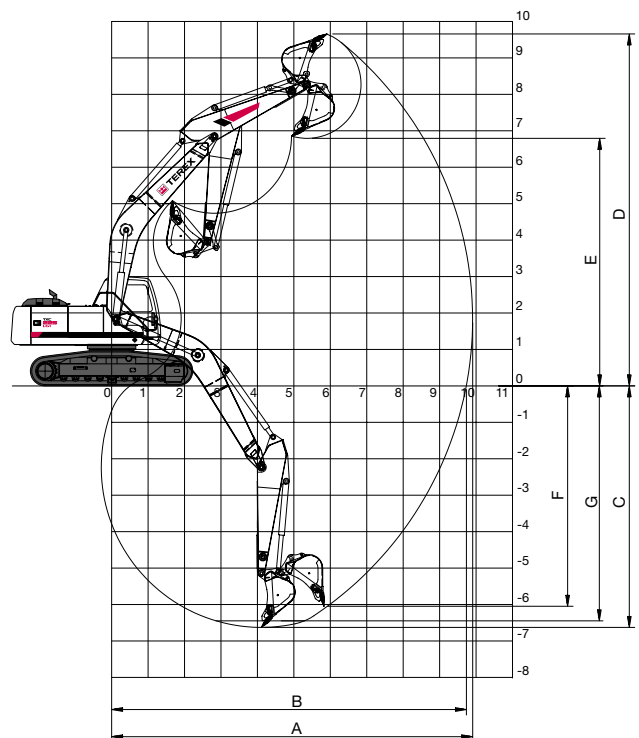
**Dimensions: 18' 8" (5.7 m) Boom, 9' 6" (2.9 m) Stick, 24" (600 mm) Shoe**



**Dimensions**

A Overall width of upperstructure	8' 11" (2,710 mm)
B Overall width of cab	3' 2" (960 mm)
C Overall height of cab	9' 10" (3,000 mm)
D Tail swing radius	9' (2,750 mm)
E Overall height	9' 11" (3,030 mm)
F Clearance under counterweight	3' 8" (1,105 mm)
G Ground clearance	19" (480 mm)
H Idler to sprocket distance	12' 0" (3,645 mm)
I Track length	14' 7" (4,440 mm)
J Track gauge	7' 10" (2,390 mm)
K Track shoe width	24" (600 mm)
L Overall length	31' 2" (9,510 mm)
M Overall track width with 24" (600 mm) shoe	9' 10" (2,990 mm)

**Working Ranges**



**Digging Forces (Maximum radial tooth forces)**

Stick	9' 6" (2.9 m)	7' 9" (2.4 m)	11' 6" (3.5 m)
Bucket digging force*	28,900 lbf (128 kN)	28,900 lbf (128 kN)	28,900 lbf (128 kN)
Stick digging force*	22,500 lbf. (100 kN)	25,100 lbf. (111 kN)	20,500 lbf. (91 kN)

\*At power boost

**Boom Length: 18' 8" (5.7 m)**

Stick length	9' 6" (2.9 m)	7' 9" (2.4 m)	11' 6" (3.5 m)
A. Max. digging reach	32' 6" (9,910 mm)	31' 5" (9,580 mm)	34' 3" (10,445 mm)
B. Max. digging reach at ground level	31' 11" (9,735 mm)	30' 10" (9,400 mm)	33' 7" (10,230 mm)
C. Max. digging depth	21' 9" (6,630 mm)	20' 1" (6,125 mm)	23' 9" (7,230 mm)
D. Max. digging height	31' 8" (9,660 mm)	32' 3" (9,825 mm)	32' 5" (9,870 mm)
E. Max. dumping height	22' 4" (6,810 mm)	22' 7" (6,885 mm)	23' (7,020 mm)
F. Max. vertical wall digging depth	19' 10" (6,045 mm)	19' 10" (6,035 mm)	21' 6" (6,560 mm)
G. Max. digging depth (8' / 2.44 m level)	21' 2" (6,445 mm)	19' 5" (5,930 mm)	23' 2" (7,070 mm)

## Lifting Capacities



Boom: 18' 8"    Stick: 9' 6"    Bucket: PCSA 1.06 yd <sup>3</sup> Shoe: 24"    Weight: 47,400 lbs.											
Reach											unit: 1000 lb.
Height	10ft F	10ft S	15ft F	15ft S	20ft F	20ft S	25ft F	25ft S	Max. F	Max. S	Reach (ft)
25 ft					*7.46	*7.46			*7.46	*7.46	@20.76
20 ft					*7.32	*7.32			*7.32	*7.32	@24.46
15 ft					*10.14	*10.14	*9.47	7.33	*7.55	6.51	@26.74
10 ft	*23.37	*23.37	*15.06	*15.06	*11.84	10.21	*10.22	7.14	*8.08	5.91	@27.94
5 ft	*13.94	*13.94	*18.62	15.06	*13.62	9.77	*11.09	6.93	*8.97	5.70	@28.21
0 ft	*15.27	*15.27	*20.69	14.48	*14.48	9.44	10.97	6.76	9.44	5.81	@27.57
-5 ft	*22.05	*22.05	*20.95	14.28	*15.20	9.29	10.89	6.69	10.30	6.33	@25.95
-10 ft	*28.12	*28.12	*14.96	14.35	*14.19	9.32			*11.56	7.55	@23.16
-15 ft	*22.04	*22.04	*15.61	14.68					*11.88	10.62	@18.64

Boom: 18' 8"    Stick: 9' 6"    Bucket: PCSA 1.06 yd <sup>3</sup> Shoe: 32"    Weight: 48,850 lbs.											
Reach											unit: 1000 lb.
Height	10ft F	10ft S	15ft F	15ft S	20ft F	20ft S	25ft F	25ft S	Max. F	Max. S	Reach (ft)
25 ft									*7.46	*7.46	@20.76
20 ft									*7.32	*7.32	@24.46
15 ft					*10.14	*10.14	*9.47	7.53	*7.55	6.69	@26.74
10 ft	*23.37	*23.37	*15.06	*15.06	*11.84	10.47	*10.22	7.34	*8.08	6.09	@27.94
5 ft	*13.94	*13.94	*18.62	15.44	*13.62	10.03	*11.09	7.12	*8.97	5.87	@28.21
0 ft *	15.27	*15.27	*20.69	14.87	*14.88	9.71	11.29	6.95	9.73	5.99	@27.57
-5 ft	*22.05	*22.05	*20.95	14.66	*15.20	9.55	11.22	6.89	10.62	6.52	@25.95
-10 ft	*28.12	*28.12	*19.46	14.73	*14.19	9.58			*11.56	7.76	@23.16
-15 ft	*22.04	*22.04	*15.61	15.06					*11.88	10.90	@18.64
-20 ft	*35.24	*35.24	*24.35	20.04							

Boom: 18' 8"    Stick: 9' 6"    Bucket: PCSA 1.06 yd <sup>3</sup> Shoe: 36"    Weight: 49,515 lbs.											
Reach											unit: 1000 lb.
Height	10ft F	10ft S	15ft F	15ft S	20ft F	20ft S	25ft F	25ft S	Max. F	Max. S	Reach (ft)
25 ft									*8.15	*8.15	@21.07
20 ft									*7.93	7.82	@24.73
15 ft					*10.10	*10.10	*9.43	7.60	*8.10	6.64	@26.98
10 ft	*23.38	*23.38	*15.04	*15.04	*11.82	10.57	*10.20	7.41	*8.59	6.06	@28.17
5 ft	*12.31	*12.31	*18.62	15.63	*13.60	10.15	*11.07	7.20	*9.44	5.85	@28.44
0 ft	*14.04	*14.04	*20.70	15.07	*14.87	9.83	11.44	7.03	9.72	5.98	@27.80
-5 ft	*21.16	*21.16	*20.96	14.87	*15.20	9.67	11.36	6.96	10.60	6.50	@26.20
-10 ft	*28.17	*28.17	*19.47	14.93	*14.18	9.70			*11.30	7.72	@23.44
-15 ft	*22.07	*22.07	*15.61	15.25					*11.49	10.75	@18.99
-15 ft	*50.09	*50.09	*39.20	*39.20	*30.09	30.04					

### Notes:

1. Ratings are based on SAE J1097
2. Load point is the hook on the back of the bucket.
3. \*Rated loads are based on hydraulic capacity.
4. Rated loads do not exceed 87% of hyd. capacity or 75% of tipping capacity.

-  F = Rating over front  
 S = Rating over side or 360 degree  
 0 = Ground

# Hydraulic Excavator

## TXC 225LC-1


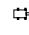
### Lifting Capacities

Boom: 18' 8" Stick: 11' 6" Bucket: PCSA 1.06 yd <sup>3</sup> Shoe: 32" Weight: 49,020 lbs.											
Height	Reach								unit: 1000 lb.		
	10ft F	10ft S	15ft F	15ft S	20ft F	20ft S	25ft F	25ft S	Max. F	Max. S	Reach (ft)
25 ft									*6.88	*6.88	@23.14
20 ft							*8.13	7.73	*6.76	*6.76	@26.51
15 ft					*8.97	*8.97	*8.57	7.60	*6.93	5.97	@28.62
10 ft			*13.24	*13.24	*10.77	10.57	*9.46	7.37	*7.35	5.46	@29.75
5 ft	*22.04	*22.04	*17.16	15.61	*12.74	10.07	*10.48	7.11	*8.06	5.26	@30.00
0 ft	*16.59	*16.59	*19.88	14.87	*14.30	9.67	11.24	6.90	8.75	5.34	@29.40
-5 ft	*20.87	*20.87	*20.85	14.53	*15.04	9.44	11.10	6.77	9.42	5.74	@27.89
-10 ft	*28.87	28.50	*20.11	14.49	*14.62	9.39	*10.89	6.78	*10.67	6.66	@25.31
-15 ft	*25.06	*25.06	*17.34	14.71	*12.35	9.56			*11.21	8.76	@21.27
-20 ft									*11.11	*11.11	@14.56

Boom: 18' 8" Stick: 11' 6" Bucket: PCSA 1.06 yd <sup>3</sup> Shoe: 36" Weight: 49,680 lbs.											
Height	Reach								unit: 1000 lb.		
	10ft F	10ft S	15ft F	15ft S	20ft F	20ft S	25ft F	25ft S	Max. F	Max. S	Reach (ft)
25 ft									*6.88	*6.88	@23.14
20 ft							*8.13	7.83	*6.76	*6.76	@26.51
15 ft					*8.97	*8.97	*8.57	7.70	*6.93	6.05	@28.62
10 ft			*13.24	*13.24	*10.77	10.70	*9.46	7.47	*7.35	5.54	@29.75
5 ft	*22.04	*22.04	*17.16	15.81	*12.74	10.20	*10.48	7.21	*8.06	5.34	@30.00
0 ft	*16.59	*16.59	*19.88	15.06	*14.30	9.80	*11.32	6.99	8.89	5.42	@29.40
-5 ft	*20.87	*20.87	*20.85	14.72	*15.04	9.57	11.27	6.87	9.57	5.83	@27.89
-10 ft	*28.87	28.86	*20.11	14.68	*14.62	9.52	*10.89	6.88	*10.67	6.76	@25.31
-15 ft	*25.06	*25.06	*17.34	14.90	*12.35	9.70			*11.21	8.88	@21.27
-20 ft									*11.11	*11.11	@14.56

#### Notes:

1. Ratings are based on SAE J1097
2. Load point is the hook on the back of the bucket.
3. \*Rated loads are based on hydraulic capacity.
4. Rated loads do not exceed 87% of hyd. capacity or 75% of tipping capacity.

 F = Rating over front  
 S = Rating over side or 360 degree  
 0 = Ground



For more information, product demonstration, or details on purchase, lease and rental plans, please contact your local TEREX Distributor.

#### TEREX Construction Americas

8800 Rostin Road  
Southaven, MS 38671  
USA

TEL 662-393-1800  
SALES 866-837-3923  
PARTS & TECH SUPPORT 888-201-6008  
FAX 662-393-1700  
EMAIL sales@terexca.com  
WEB terexca.com

Effective date: January 1, 2005. For further information, please contact your local distributor or the TEREX sales office listed. Continuous improvement of our products is a TEREX policy. Product specifications are subject to change without notice or obligation. The photographs and drawings in this brochure are for illustrative purposes only. Refer to the appropriate Operator's Manual for instructions on the proper use of this equipment. Failure to follow the appropriate Operator's Manual when using our equipment or to otherwise act irresponsibly may result in serious injury or death. Prices and specifications subject to change without notice. The only warranty applicable is the standard written warranty applicable to the particular product and sale. TEREX makes no other warranty, expressed or implied. Products and services listed may be trademarks, service marks or trade-names of TEREX Corporation and/or its subsidiaries in the USA and other countries and all rights are reserved. "TEREX" is a Registered Trademark of TEREX Corporation in the USA and many other countries. Copyright ©2005 TEREX Corporation

TXL 225LC-1 5K 0305B Part #109074