



TEREX

TXC 175LC-1

Hydraulic Excavator

OPERATING WEIGHT	38,360 lbs (17,400 kg)
NET ENGINE POWER	118 hp (88 kW) @ 1,950 rpm
MAX DIG DEPTH	20' 5" (6,220 mm)
MAX REACH	29' 9" (9,070 mm)



HYDRAULIC EXCAVATOR
TXC 175LC-1

FEATURES

- Powerful, quiet, fuel efficient, turbocharged USA EPA Tier 2 compliant diesel engine maximizes power output and utilization
- e-EPOS System uses variable displacement piston pumps ensuring high efficiency and lower fuel consumption
- Swing anti-rebound valve assures quick, precise, and smooth directional stops during dumping or cradling
- Exceptional bucket break-out and radial tooth forces for toughest digging
- Spacious, comfortable cab provides excellent visibility and ergonomic operating environment
- Advanced graphic display LCD information monitor panel makes troubleshooting easier, simplifies machine performance record keeping
- Standard equipped 3-switch joystick control and hydraulic piping to boom base facilitate installation of most attachments
- Equipped to maximize operator comfort, efficiency and performance
- More standard features to make this TEREX hydraulic excavator the most productive ever

Specifications

Engine	
Model	DAEWOO DE58TIS
Type	Water-cooled, 4-cycle, direct injection, aspiration, turbocharged, air-to-air intercooled. USA EPA Tier 2 compliant.
No. of cylinders	6
Rated flywheel horsepower	
DIN 6271, net	120 PS (88 kW) @ 1,950 rpm
SAE J1349, net	118 HP (88 kW) @ 1,950 rpm
Piston displacement	353 cu. in. (5,785 cc)
Maximum torque	333 lbf.ft. (451 Nm) @ 1,450 rpm
Bore and stroke	4" x 4.6" (102 mm x 118 mm)
Starting system	24V electric motor
Batteries	2 x 12V x 100 AH

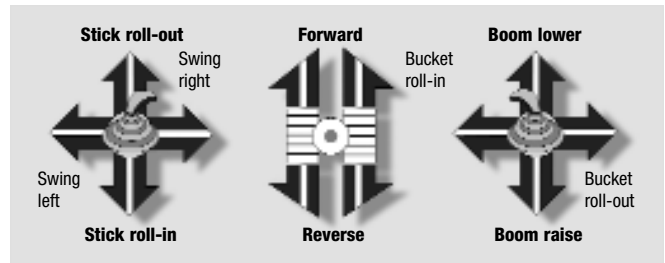
Hydraulic System	
e-EPOS (Electronic Power Optimizing System) allows the operator to maximize work efficiency over a full range of operating conditions and to minimize fuel consumption.	
Hydraulic system assures fully independent and combined operations.	
Automatic 2 speed travel system for high traction force and travel speed.	
Cross-sensing and fuel saving pump system.	
Auto idle system.	
2-Working / 2-power mode selection system.	
Computer aided engine-pump control.	
Main pumps	2 variable displacement axial piston pumps.
Max. oil flow	2 x 40.2 gpm (2 x 152 L/min)
Pilot pump	Gear pump
Max. oil flow	4.9 gpm (18.5 L/min)
Swing motor	
Relief valve	4,050 psi (279 bar)
Main relief valves	
Boom/Stick/Bucket	Normal: 4,690 psi (324 bar) Power Boost: 4,980 psi (343 bar)
Travel circuit	4,690 psi (324 bar)

Hydraulic Cylinders		
High-strength piston rods and tubes are used. Cylinder cushion mechanism is provided for all cylinders to minimize shock during operation and extend cylinder component life.		
Cylinders	Qty	Bore x Rod dia x Stroke
Boom	2	4.5" x 3.1" x 3' 1" (115 x 80 x 1,195 mm)
Stick	1	4.9" x 3.5" x 4' 9" (125 x 90 x 1,450 mm)
Bucket	1	4.3" x 3.0" x 3' 4" (110 x 75 x 1,025 mm)

Superstructure Revolving Frame
Deep full-reinforced box section constructed of heavy gauge steel plates.

Operator's Cab	
Cab is independent and roomy. 4 side safety glass windows give excellent visibility. Front window slides up and stores in the roof and side window can be opened for ventilation. Fully adjustable suspension seat. Air conditioner. ISO standard cab.	
Noise Levels (dynamic value)	
LwA External noise	
Guaranteed Sound Power Level	104 dB(A) (2,000/14/EC)
Measured Sound Power Level	102.7 dB(A) (2,000/14/EC)
LpA Operator Noise	72 dB(A) (ISO 6396)

Controls - 2 Implement Levers
Pilot pressure control type. Right lever is boom and bucket control, left lever for swing and stick control.



2 Travel Pedal with Levers
Pilot pressure control type. Independent drive at each track allows counter-rotation of the tracks. Levers are detachable.

Swing Mechanism	
High-torque, axial piston motor with planetary reduction gear in oil bath. Swing assembly is single row, shear type ball bearing with induction-hardened internal gear. Internal gear and pinion gear immersed in lubricant. Swing parking brake is spring-set, hydraulic-released disc type. A two position swing lock secures the superstructure for transportation.	
Swing speed	0 to 11.7 rpm
Rear swing radius	8' (2,450 mm)

Drive	
Each track is driven by an independent, high-torque, axial piston motor through planetary reduction gearing. Two levers or foot pedal control provide smooth travel or counter-rotation upon demand.	
Travel speed (High/Low)	3.2/2.1 mph (4.9/3.5 km/h)
Maximum traction force	31,085 lbf (138 kN)
Gradeability	35° (70%) continuous

Brakes
Two oil disc brakes outboard mounted on final drive input shafts. Parking brake is spring-set, hydraulic-released disc type.

Specifications

Undercarriage

Tractor type undercarriage. Heavy-duty track frame, all welded stress-relieved structure. The highest grade materials are used for toughness. Side frames are welded, securely and rigidly, to the track frame. Lifetime-lubricated track rollers, idlers and sprockets with floating seals reduce field service requirements. Track shoes of induction-hardened rolled alloy with triple grousers ensure long life under the harshest applications. Specially heat-treated connecting pins reduce wear. Hydraulic track adjusters with shock-absorbing recoil springs are standard.

Number of rollers and shoes (each side) ground contact area

Upper rollers 2

(Standard Shoe)

Lower rollers 8

Track shoes 49

Overall track length 13' 3" (4,030 mm)

Weight

Equipped with 16' 11" (5.15 m) boom, 8' 6" (2.6 m) stick, and 0.92 yd³; PCSA heaped (0.7 m³) bucket and 24" (600 mm) shoes.

Shoe type	Shoe width	Operating weight	Ground pressure
Triple grouser	24" (600 mm)	38,360 lb. (17,400 kg)	5.8 psi (40 kpa)
Triple grouser	20" (500 mm)	37,920 lb. (17,200 kg)	7.0 psi (48 kpa)
Triple grouser	28" (700 mm)	38,800 lb. (17,600 kg)	5.1 psi (35 kpa)
Triple grouser	32" (800 mm)	39,240 lb. (17,800 kg)	4.4 psi (30 kpa)
Triple grouser	36" (900 mm)	39,900 lb. (18,100 kg)	4.2 psi (28 kpa)

Standard Equipment

Hydraulic System

Boom and stick flow regeneration • Boom and stick holding valves • Swing anti-rebound valves • Spare ports (valve) • One-touch power boost

Cab and Interior

All weather sound suppressed cab with suspension type mounts • Air conditioner (heavy duty) and heater/ defroster • Adjustable suspension seat with head rest and adjustable arm rest • Pull-up type front window and removable lower front window with storage brackets in cab • Roof hatch/cover • Cab light • Intermittent windshield wiper • Cigar lighter and ashtray • Cup holder • Hot and cold storage container • Graphic LCD display monitor • Fuel consumption controller • AM/FM Radio and cassette player • Remote radio ON/OFF switch • 12V spare power socket • Serial communication port for laptop PC interface • Joystick levers with 3 switches

Service Refill Capacities

	U.S. gal	Liters
Fuel tank	74.0	280
Cooling system	10.6	22
Lubrication	U.S. gal	Liters
Engine oil	5.0	19
Swing drive (each)	1.3	5.0
Final drive (each)	0.8	3.0
Hydraulic system	55.5	210
Hydraulic tank	39.6	150

Buckets

Capacity PCSA heaped	Width without side cutters	Width with side cutters	Weight	Stick Recommendation	
				8' 6" (2.6 m)	10' 2" (3.1 m)
0.44 yd ³ (0.34 m ³)	22" (564 mm)	26" (650 mm)	930 lb. (420 kg)	A	A
0.59 yd ³ (0.45 m ³)	27" (692 mm)	31" (778 mm)	1,010 lb. (460 kg)	A	A
0.75 yd ³ (0.57 m ³)	33" (842 mm)	37" (928 mm)	1,150 lb. (520 kg)	A	A
0.92 yd ³ (0.7 m ³)	39" (984 mm)	42" (1070 mm)	1,280 lb. (580 kg)	A	B
0.99 yd ³ (0.76 m ³)	41" (1,054 mm)	45" (1,140 mm)	1,340 lb. (610 kg)	B	C
1.06 yd ³ (0.81 m ³)	42" (1,058 mm)	46" (1,168 mm)	1,520 lb. (690 kg)	C	C
1.22 yd ³ (0.93 m ³)	46" (1,180 mm)	51" (1,290 mm)	1,630 lb. (740 kg)	C	C

- A. Suitable for materials with density of 3,370 lb./cu.yd. (2,000 kg/m³) or less
 B. Suitable for materials with density of 2,700 lb./cu.yd. (1,600 kg/m³) or less
 C. Suitable for materials with density of 1,850 lb./cu.yd. (1,100 kg/m³) or less

Other

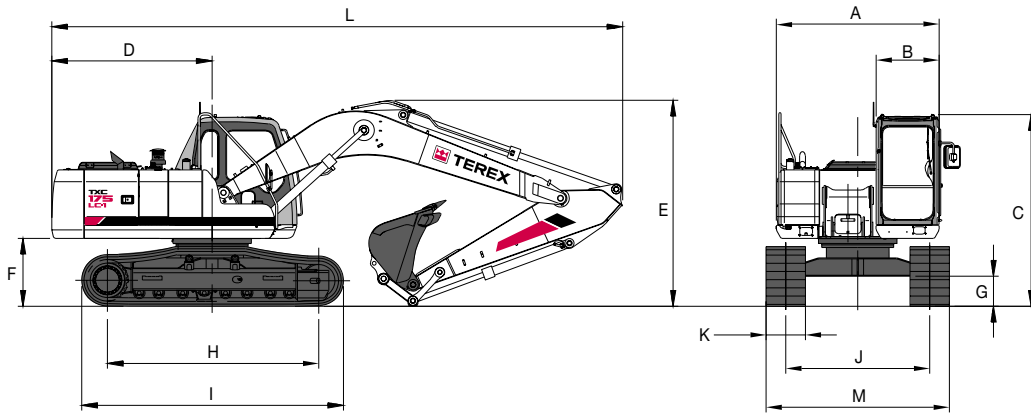
Large handrails and steps • Punched grid-type metal anti-slip upperstructure plates • Seat belt • Sun roof (hatch) • Hydraulic safety lock lever • Safety glass • Manual hammer mounted in cab for emergency use • Right and left rearview mirrors • Travel alarm • Heavy-duty fan guard • Dual element air cleaner • Pre-cleaner • Water separator • Double fuel filter • Radiator dust screen • Engine overheat prevention system • Engine restart prevention system • Self-diagnostic system • Heavy-duty alternator (24V, 80 amps) • Electric horn • Halogen working lights (frame mounted 2, boom mounted 2) • Hydraulic track adjuster • Sealed and greased track links • Track guards

Optional Equipment

Sun visor • Cab top/front guard (ISO 10262, FOGS standard) • Rotating beacon • Piping for hammer (one way) • Piping for optional implement rotation • Additional work lights on the cab (2 front lamps, 4 front and 2 rear lamps) • Electric fuel supply pump

Hydraulic Excavator TXC 175LC-1

Dimensions: 16' 11" (5.15 m) Boom, 8' 6" (2.6 m) Stick, 24" (600 mm) Shoe



Dimensions

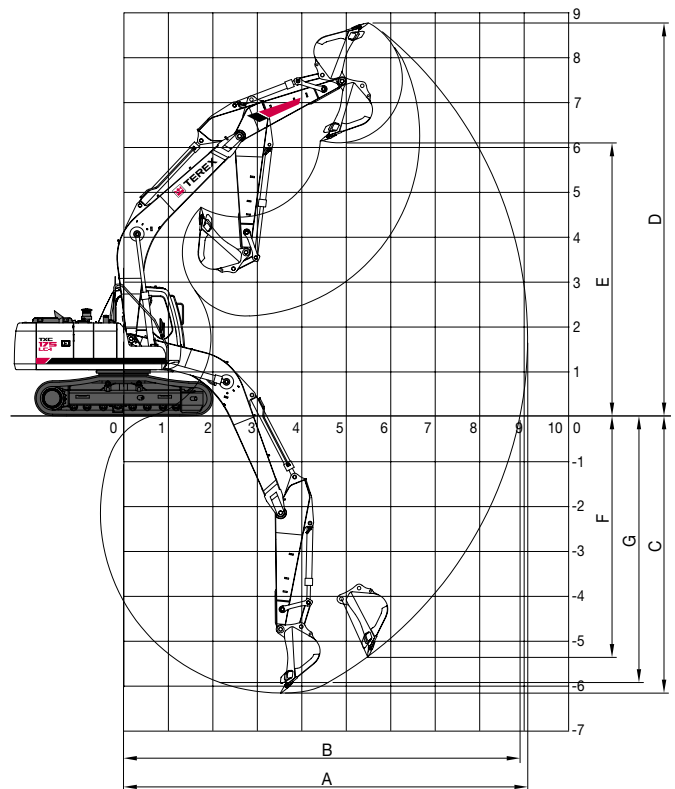
A Overall width of upperstructure	8' 2" (2,490 mm)
B Overall width of cab	3' 2" (960 mm)
C Overall height of cab	9' 7" (2,930 mm)
D Tail swing radius	8' (2,450 mm)
E Overall height	10' 5" (3,170 mm)
F Clearance under counterweight	3' 5" (1,040 mm)
G Ground clearance	1' 6" (460 mm)
H Tumbler distance	10' 7" (3,230 mm)
I Track length	13' 3" (4,030 mm)
J Track gauge (standard track)	7' 3" (2,200 mm)
Track gauge (narrow track)	6' 6" (1,990 mm)
K Track shoe width	24" (600 mm)
L Overall length	28' 8" (8,730 mm)
M Overall track width (standard track)	9' 2" (2,800 mm)
Overall track width (narrow track)	8' 2" (2,490 mm)

Digging Forces (Maximum radial tooth forces)

Stick	8' 6" (2.6 m)	10' 2" (3.1 m)
Bucket digging force*	24,900 lbf (111 kN)	25,100 lbf (112 kN)
Stick digging force*	20,300 lbf (90 kN)	18,100 lbf (80 kN)

*At power boost

Working Ranges



Boom Length: 16' 11" (5.2 m)

Stick length	8' 6" (2.6 m)	10' 2" (3.1 m)
A. Max. digging reach	29' 9" (9,070 mm)	31' 2" (9,510 mm)
B. Max. digging reach at ground level	29' 2" (8,900 mm)	30' 8" (9,350 mm)
C. Max. digging depth	20' 5" (6,220 mm)	22' 1" (6,720 mm)
D. Max. digging height	28' 11" (8,820 mm)	29' 6" (8,990 mm)
E. Max. dumping height	19' 11" (6,080 mm)	20' 6" (6,250 mm)
F. Max. vertical wall digging depth	17' 2" (5,230 mm)	18' 8" (5,700 mm)
G. Max. digging depth, 8' level	19' 7" (5,980 mm)	21' 4" (6,500 mm)

Lifting Capacities


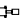
Boom: 16' 11" Stick: 8' 6" Bucket: PCSA 0.92 yd ³ Shoe: 24" Weight: 38,209 lbs.											
Height	Reach									unit: 1000 lb.	
	10ft F	10ft S	15ft F	15ft S	20ft F	20ft S	25ft F	25ft S	Max. F	Max. S	Reach (ft)
20 ft					*7.78	6.34			*6.23	5.75	@21.05
15 ft					*9.23	6.21			*6.38	4.51	@23.76
10 ft	*19.08	18.20	*12.95	9.48	10.40	5.93	7.13	3.98	*6.86	3.93	@25.18
5 ft	*20.07	16.25	16.11	8.78	10.04	5.62	6.98	3.85	6.74	3.70	@25.54
0 ft	*18.39	15.57	15.56	8.32	9.76	5.37			6.91	3.77	@24.90
-5 ft	*25.29	15.52	15.35	8.15	9.64	5.26			7.70	4.20	@23.15
-10 ft	*24.74	15.76	15.43	8.21	9.72	5.33			9.72	5.33	@20.01
-15 ft	*17.67	16.33							*12.17	8.97	@14.56

Boom: 16' 11" Stick: 8' 6" Bucket: PCSA 0.92 yd ³ Shoe: 28" Weight: 38,782 lbs.											
Height	Reach									unit: 1000 lb.	
	10ft F	10ft S	15ft F	15ft S	20ft F	20ft S	25ft F	25ft S	Max. F	Max. S	Reach (ft)
20 ft					*7.78	7.14			*6.23	*6.23	@21.05
15 ft					*9.23	7.01			*6.38	5.13	@23.76
10 ft	*19.08	*19.08	*12.95	10.74	10.51	6.73	7.21	4.56	*6.86	4.50	@25.18
5 ft	*20.07	18.91	*16.21	10.02	10.15	6.40	7.06	4.42	6.82	4.26	@25.54
0 ft	*18.39	18.19	15.73	9.54	9.88	6.15			6.99	4.34	@24.90
-5 ft	*25.29	18.14	15.52	9.36	9.75	6.04			7.79	4.83	@23.15
-10 ft	*24.74	18.39	15.60	9.44	9.83	6.11			9.83	6.11	@20.01
-15 ft	*17.67	*17.67							*12.17	10.27	@14.56

Boom: 16' 11" Stick: 10' 2" Bucket: PCSA 0.75 yd ³ Shoe: 24" Weight: 38,235 lbs.											
Height	Reach									unit: 1000 lb.	
	10ft F	10ft S	15ft F	15ft S	20ft F	20ft S	25ft F	25ft S	Max. F	Max. S	Reach (ft)
20 ft									*5.33	*5.33	@22.86
15 ft					*8.49	7.20	*6.06	4.83	*5.44	4.69	@25.37
10 ft			*11.75	10.99	*9.91	6.89	7.33	4.70	*5.80	4.16	@26.70
5 ft	*24.84	19.31	*15.27	10.19	10.24	6.52	7.14	4.53	6.28	3.95	@27.05
0 ft	*20.03	18.16	15.72	9.60	9.90	6.22	6.98	4.38	6.40	4.00	@26.43
-5 ft	*23.96	17.89	15.41	9.33	9.72	6.05			7.00	4.37	@24.80
-10 ft	*26.52	18.03	15.40	9.32	9.72	6.05			8.48	5.30	@21.90
-15 ft	*20.86	18.52	*14.11	9.58					*11.87	7.89	@17.09

Notes:

1. Ratings are based on SAE J1097
2. Load point is the hook on the back of the bucket.
3. *Rated loads are based on hydraulic capacity.
4. Rated loads do not exceed 87% of hyd. capacity or 75% of tipping capacity.

-  F = Rating over front
 S = Rating over side or 360 degree
 0 = Ground

Hydraulic Excavator



TXC 175LC-1

Lifting Capacities

Boom: 16' 11" Stick: 10' 2" Bucket: PCSA 0.75 yd ³ Shoe: 28" Weight: 38,676 lbs.											
Height	Reach								unit: 1000 lb.		
	10ft F	10ft S	15ft F	15ft S	20ft F	20ft S	25ft F	25ft S	Max. F	Max. S	Reach (ft)
20 ft									*5.33	*5.33	@22.86
15 ft					*8.49	7.28	*6.06	4.89	*5.44	4.75	@25.37
10 ft			*11.75	11.10	*9.91	6.97	7.42	4.76	*5.80	4.22	@26.70
5 ft	*24.84	19.51	*15.27	10.30	10.36	6.60	7.24	4.59	6.36	4.00	@27.05
0 ft	*20.03	18.36	15.91	9.71	10.03	6.30	7.08	4.44	6.48	4.05	@26.43
-5 ft	*23.96	18.09	15.59	9.44	9.84	6.13			7.09	4.43	@24.80
-10 ft	*26.52	18.24	15.58	9.43	9.84	6.13			8.59	5.37	@21.90
-15 ft	*20.86	18.73	*14.11	9.69					*11.87	7.98	@17.09

Notes:

1. Ratings are based on SAE J1097
2. Load point is the hook on the back of the bucket.
3. *Rated loads are based on hydraulic capacity.
4. Rated loads do not exceed 87% of hyd. capacity or 75% of tipping capacity.

-  F = Rating over front
-  S = Rating over side or 360 degree
- 0 = Ground



For more information, product demonstration, or details on purchase, lease and rental plans, please contact your local TEREX Distributor.

TEREX Construction Americas

8800 Rostin Road
 Southaven, MS 38671
 USA

TEL 662-393-1800
 SALES 866-837-3923
 PARTS & TECH SUPPORT 888-201-6008
 FAX 662-393-1700
 EMAIL sales@terexca.com
 WEB terexca.com