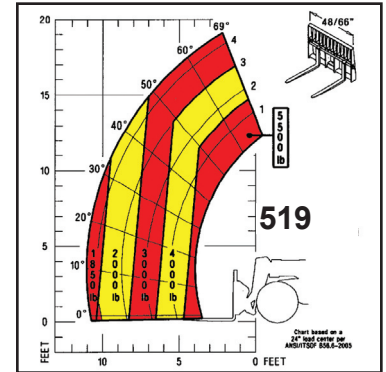


SPECIFICATIONS

MAKE	Mustang
MODEL	519
CAPACITIES	
Lift Capacity (kg)	5,500 lbs. (2495)
Max. Lift Height (m)	19'1" (5.8)
Capacity at Max. Lift Height (kg)	3,000 lbs. (1360)
Max. Forward Reach (m)	11' (3.35)
Capacity at Max. Reach (kg)	1,850 lbs. (839)
Max. Reach below Grade (mm)	0" (0)
ENGINE	
Type	Deutz - 4-cyl. Diesel
Power (kW)	64 hp (48)
Aspiration	Turbocharged
Model	TD2009 L04
Rated Speed	2750 rpm
COMPONENTS	
Transmission	Rexroth 2-Speed Hydrostatic
Max. Travel Speed (km/h)	15 mph (24)
Steering	4-wheel 2-wheel Crab
Service Brakes	Internal Wet Disc 2-wheel Hydraulic
Parking Brake	SAHR (Spring-Applied, Hydraulic-Release)
Axle Manufacturer	Dana
HYDRAULIC SYSTEM	
Pump Type	Gear
Flow Capacity (L/min)	22 gpm (83)
System Pressure (bar)	3,350 psi (231)
Hydraulic Reservoir Capacity (L)	18 gal. (68)
GENERAL SPECIFICATIONS	
Approximate Weight (kg)	10,000 lbs. (4536)
Length - Less Forks (m)	12'4" (3.76)
Width (m)	5'11" (1.80)
Ground Clearance (mm)	14" (350)
Wheelbase (m)	7'6" (2.29)
Turning Radius (m)	11' (3.35)
Overall Height (m)	6'4" (1.93)
Fuel Tank Capacity (L)	17 gal. (64)



ATTACHMENT OPTIONS:

Bucket & Truss Boom

TIRE OPTIONS:

12.00 x 16.5 Bias/10 PR

12.00 x 16.5 Bias/10 PR - Foam-Filled

CONTACT YOUR MUSTANG DEALER TODAY!

SAFETY IS NO ACCIDENT. Mustang Manufacturing Company reminds users to read and understand the operator's manual before operating any piece of equipment. Additionally, make sure all safety devices and shields are in place and functioning properly. US OSHA regulations require that all forklift operators be trained on the equipment and have proven their competence to a qualified trainer.

Mustang Manufacturing Company reserves the right to add improvements or make changes in specifications at any time without notice or obligation.



MUSTANG

1880 Austin Road
Owatonna, MN 55060
507-451-7112
Fax: 507-451-8209
www.mustangmfg.com

© 2007 Mustang Manufacturing
Company, Inc.
Printed in the U.S.A.